

# Anti-CD55 Recombinant Rabbit Monoclonal Antibody



**Catalog #: 2982**

## Aliases

CD55; CD55 Molecule (Cromer Blood Group); CR; CROM; DAF; TC; CD55 Molecule, Decay Accelerating Factor For Complement (Cromer Blood Group); Complement Decay-Accelerating Factor; CD55 Antigen; Decay Accelerating Factor For Complement (CD55, Cromer Blood Group System); Cromer Blood Group Antigen; Rh Blood Group D Antigen; CHAPLE

## Background

Gene Name: CD55

NCBI Gene Entry: [1604](#)

UniProt Entry: [P08174](#)

## Application Information

Molecular Weight: Predicted, 41 kDa; observed, 55-80 kDa

Clonality: Rabbit monoclonal antibody

Clone ID: 24GB3475

Species Reactivity: Human

Applications Tested: Western blotting (WB), immunocytochemistry (IC)

## Immunogen

A synthesized peptide derived from human CD55

## Isotype

Rabbit IgG

## Storage Buffer

Supplied in PBS (pH 7.4) containing 50% glycerol, and 0.02% sodium azide.

## Storage

Store at -20 °C for one year.

## Recommended Dilutions

Western Blotting (WB): 1:1,000-1:5,000

Immunocytochemistry (IC): 1:100-1:1,000

**Note:** This product is for research use only.

---

### SUPPORT

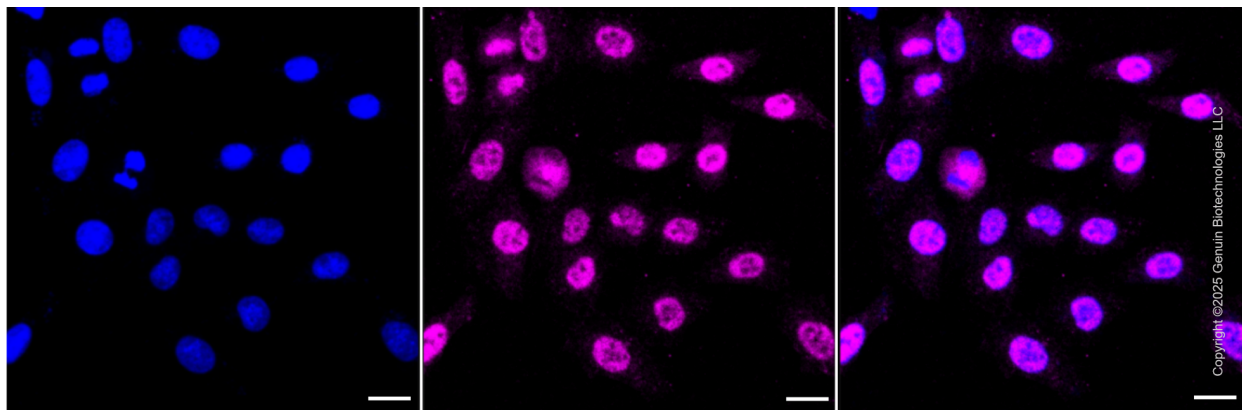
SUPPORT@GENUINBIOTECH.COM  
TEL: +1-540-855-7041

### ORDERS

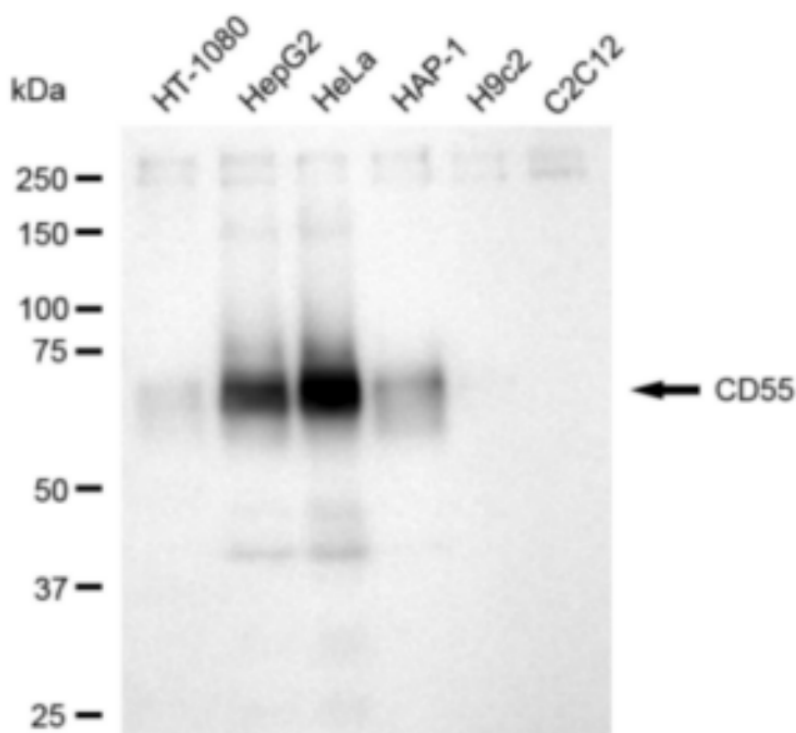
SALES@GENUINBIOTECH.COM  
FAX: +1-540-855-7041

[WWW.GENUINBIOTECH.COM](http://WWW.GENUINBIOTECH.COM)

## Validation Data



Immunocytochemical staining of HepG2 cells with anti-CD55 antibody (Cat#2982, 1:1,000). Nuclei were stained blue with DAPI; CD55 was stained magenta with Alexa Fluor® 647. Images were taken using Leica stellaris 5. Protein abundance based on laser Intensity and smart gain: Medium. Scale bar: 20  $\mu$ m.



Western blotting analysis using anti-CD55 antibody (Cat#2982). Total cell lysates (30  $\mu$ g) from various cell lines were loaded and separated by SDS-PAGE. The blot was incubated with anti-CD55 antibody (Cat#2982, 1:5,000) and HRP-conjugated goat anti-rabbit secondary antibody (Cat#201, 1:20,000) respectively. Image was developed using FeQ™ ECL Substrate Kit (Cat#226).

### SUPPORT

SUPPORT@GENUINBIOTECH.COM  
TEL: +1-540-855-7041

### ORDERS

SALES@GENUINBIOTECH.COM  
FAX: +1-540-855-7041

[WWW.GENUINBIOTECH.COM](http://WWW.GENUINBIOTECH.COM)