

Anti-Clusterin Recombinant Rabbit Monoclonal Antibody



Catalog #: 2987

Aliases

CLU; Clusterin; TRPM-2; SGP-2; KUB1; Testosterone-Repressed Prostate Message 2; Sulfated Glycoprotein 2; Apolipoprotein J; SP-40; CLU1; CLU2; APOJ; CLI; Complement-Associated Protein SP-40,40; Complement Cytolysis Inhibitor; Complement Lysis Inhibitor; Ku70-Binding Protein 1; NA1/NA2; Clusterin (Complement Lysis Inhibitor, SP-40,40, Sulfated Glycoprotein 2, Testosterone-Repressed Prostate Message 2, Apolipoprotein J); Epididymis Secretory Sperm Binding Protein; Aging-Associated Gene 4 Protein; Aging-Associated Protein 4; APO-J; TRPM2; Apo-J; AAG4; SGP2

Background

Gene Name: CLU

NCBI Gene Entry: [1191](#)

UniProt Entry: [P10909](#)

Application Information

Molecular Weight: Predicted, 52 kDa; observed, 32-42, 65 kDa

Clonality: Rabbit monoclonal antibody

Clone ID: 24GB3500

Species Reactivity: Human

Applications Tested: Western blotting (WB), immunocytochemistry (IC)

Immunogen

A synthesized peptide derived from human Clusterin

Isotype

Rabbit IgG

Storage Buffer

Supplied in PBS (pH 7.4) containing 50% glycerol, and 0.02% sodium azide.

Storage

Store at -20 °C for one year.

Recommended Dilutions

Western Blotting (WB): 1:1,000-1:5,000

Immunocytochemistry (IC): 1:100-1:1,000

SUPPORT

SUPPORT@GENUINBIOTECH.COM
TEL: +1-540-855-7041

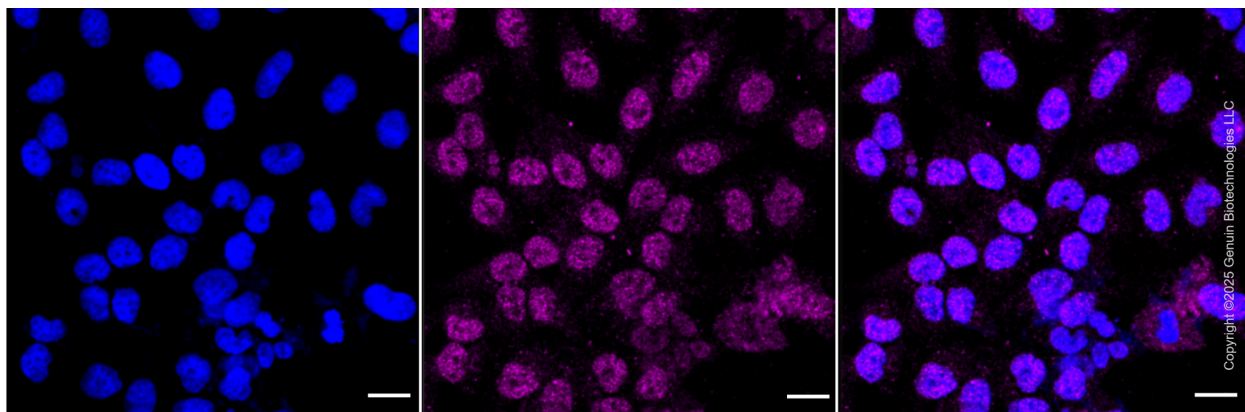
ORDERS

SALES@GENUINBIOTECH.COM
FAX: +1-540-855-7041

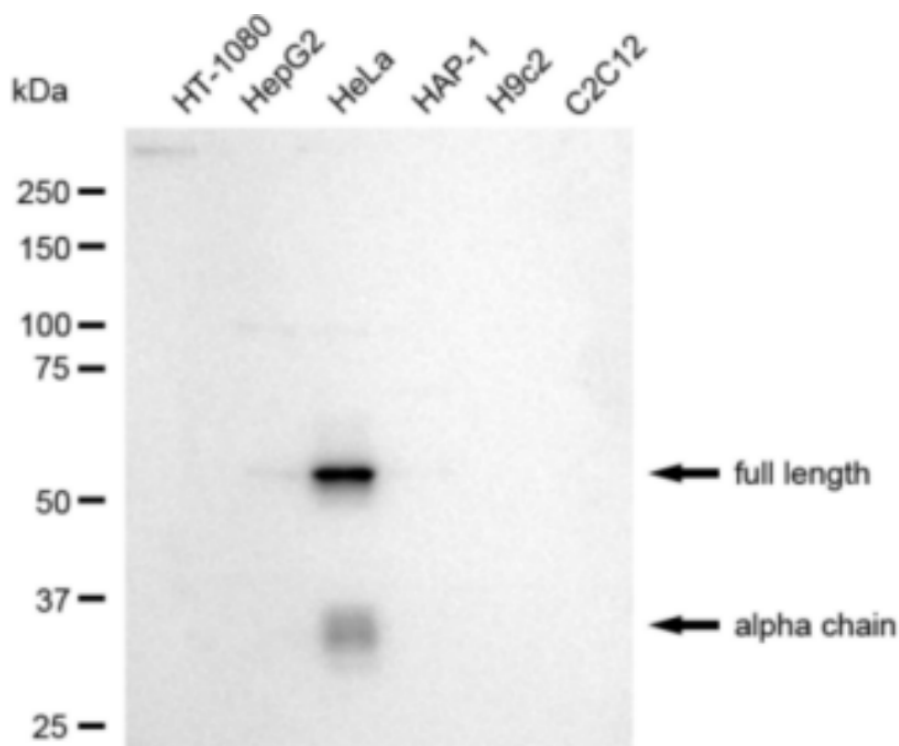
WWW.GENUINBIOTECH.COM

Note: This product is for research use only.

Validation Data



Immunocytochemical staining of HeLa cells with clusterin antibody (Cat#2987, 1:1,000). Nuclei were stained blue with DAPI; Clusterin was stained magenta with Alexa Fluor® 647. Images were taken using Leica stellaris 5. Protein abundance based on laser Intensity and smart gain: Medium. Scale bar, 20 μ m.



Western blotting analysis using anti-Clusterin antibody (Cat#2987). Total cell lysates (30 μ g) from various cell lines were loaded and separated by SDS-PAGE. The blot was incubated with anti-Clusterin antibody (Cat#2987, 1:5,000) and HRP-conjugated goat anti-rabbit secondary antibody (Cat#201, 1:20,000) respectively. Image was developed using FeQ™ ECL Substrate Kit

SUPPORT

SUPPORT@GENUINBIOTECH.COM
TEL: +1-540-855-7041

ORDERS

SALES@GENUINBIOTECH.COM
FAX: +1-540-855-7041

WWW.GENUINBIOTECH.COM

Anti-Clusterin Recombinant Rabbit Monoclonal Antibody

PAGE 3

(Cat#226).

SUPPORT

SUPPORT@GENUINBIOTECH.COM
TEL: +1-540-855-7041

ORDERS

SALES@GENUINBIOTECH.COM
FAX:+1-540-855-7041

WWW.GENUINBIOTECH.COM