

Anti-Autophagy Related 12 Recombinant Rabbit Monoclonal Antibody



Catalog #: 2989

Aliases

ATG12; Autophagy Related 12; APG12; APG12L; Ubiquitin-Like Protein ATG12; APG12 Autophagy 12-Like; ATG12 Autophagy Related 12 Homolog (S. Cerevisiae); Apg12 (Autophagy 12, S. Cerevisiae)-Like; APG12 Autophagy 12-Like (S. Cerevisiae); ATG12 Autophagy Related 12 Homolog; Apg12 (Autophagy, Yeast) Homolog; Autophagy-Related Protein 12; APG12-Like; HAPG12; FBR93

Background

Gene Name: ATG12

NCBI Gene Entry: [9140](#)

UniProt Entry: [O94817](#)

Application Information

Molecular Weight: Predicted, 15 kDa; observed, 55 kDa

Clonality: Rabbit monoclonal antibody

Clone ID: 24GB3510

Species Reactivity: Human, mouse, rat

Applications Tested: Western blotting (WB), immunocytochemistry (IC), flow cytometry (FCM)

Immunogen

A synthesized peptide derived from human Apg12

Isotype

Rabbit IgG

Storage Buffer

Supplied in PBS (pH 7.4) containing 50% glycerol, and 0.02% sodium azide.

Storage

Store at -20 °C for one year.

Recommended Dilutions

Western Blotting (WB): 1:1,000-1:5,000

Immunocytochemistry (IC): 1:100-1:1,000

Flow Cytometry (FCM): 1:2,000

SUPPORT

SUPPORT@GENUINBIOTECH.COM
TEL: +1-540-855-7041

ORDERS

SALES@GENUINBIOTECH.COM
FAX: +1-540-855-7041

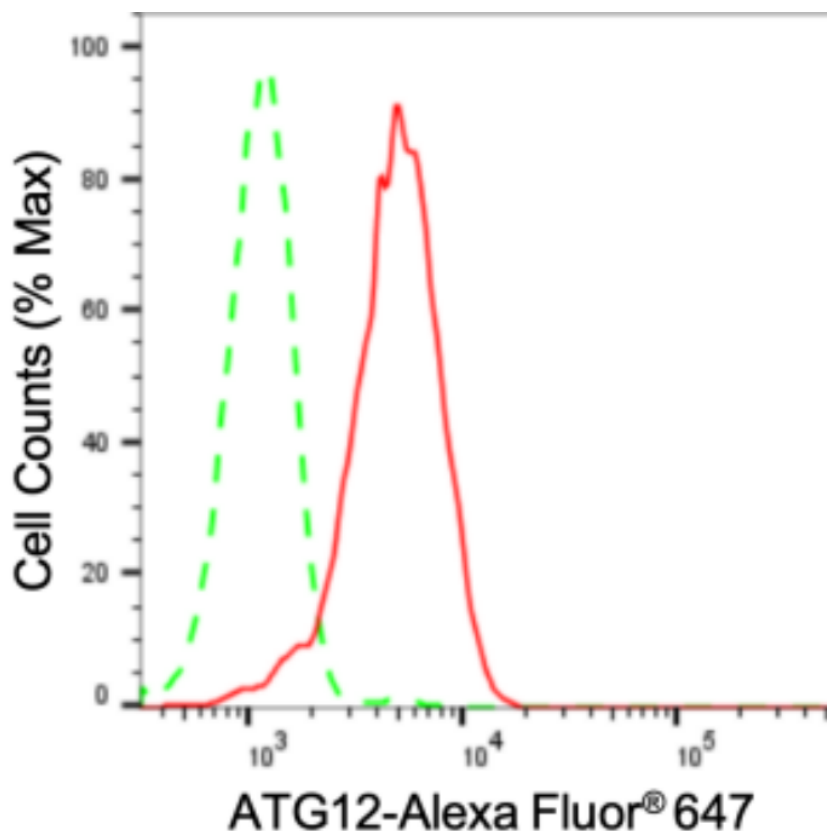
WWW.GENUINBIOTECH.COM

Anti-Autophagy Related 12 Recombinant Rabbit Monoclonal Antibody

PAGE 2

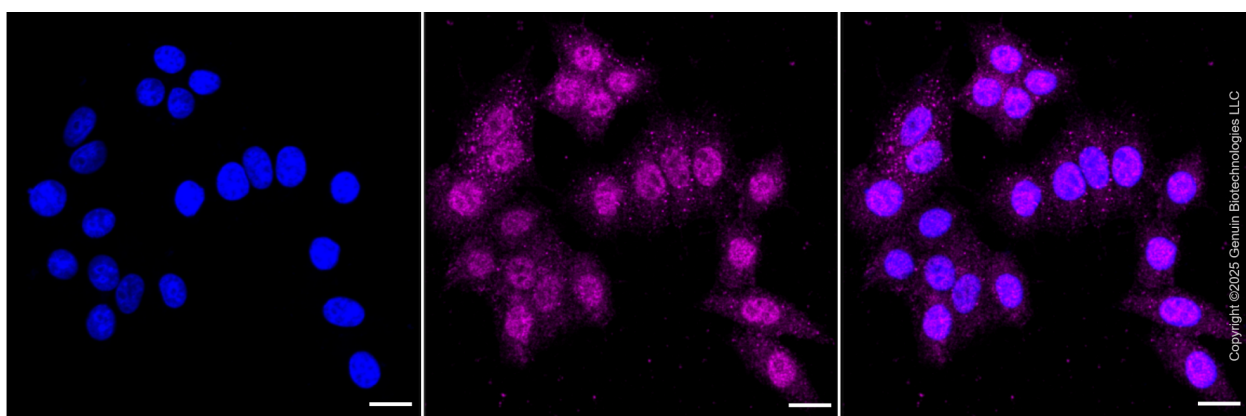
Note: This product is for research use only.

Validation Data



Copyright ©2024 Genuin Biotechnologies LLC

Flow cytometric analysis of ATG12 expression in HepG2 cells using anti-ATG12 antibody (Cat#2989, 1:2,000). Green, isotype control; red, ATG12.



Copyright ©2025 Genuin Biotechnologies LLC

Immunocytochemical staining of HepG2 cells with anti-ATG12 antibody (Cat#2989, 1:1,000). Nuclei were stained blue with DAPI; ATG12 was stained magenta with Alexa Fluor® 647. Images were taken using Leica stellaris 5. Protein abundance based on laser Intensity and smart gain: Medium. Scale bar: 20 μm.

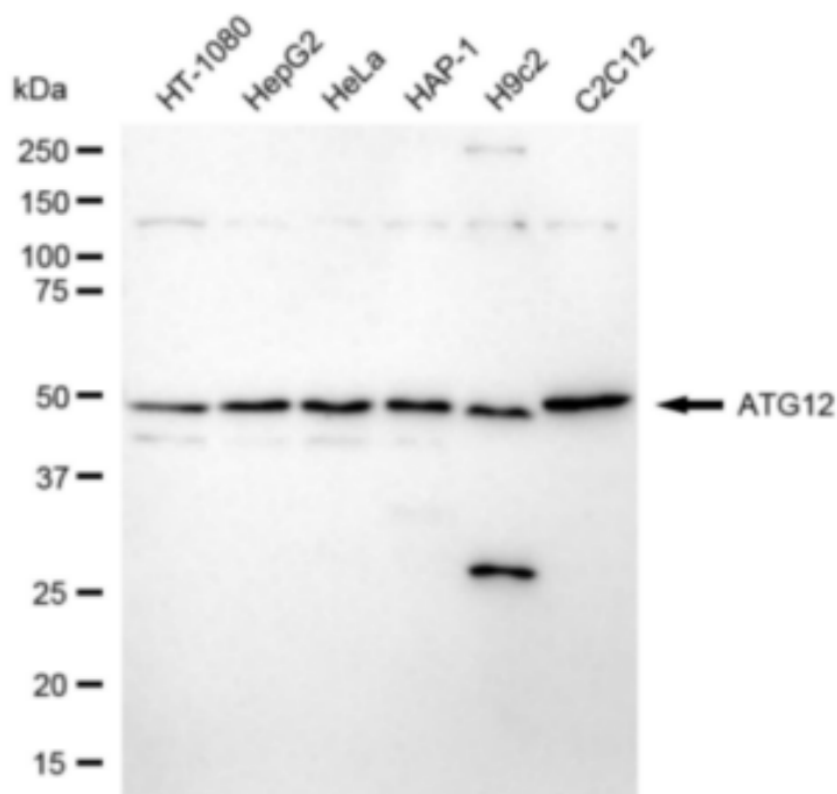
SUPPORT

SUPPORT@GENUINBIOTECH.COM
TEL: +1-540-855-7041

ORDERS

SALES@GENUINBIOTECH.COM
FAX: +1-540-855-7041

WWW.GENUINBIOTECH.COM



Copyright ©2024 Genuin Biotechnologies LLC

Western blotting analysis using anti-ATG12 antibody (Cat#2989). Total cell lysates (30 μ g) from various cell lines were loaded and separated by SDS-PAGE. The blot was incubated with anti-ATG12 antibody (Cat#2989, 1:5,000) and HRP-conjugated goat anti-rabbit secondary antibody (Cat#201, 1:20,000) respectively. Image was developed using FeQ™ ECL Substrate Kit (Cat#226).