

Anti-Nuclear Respiratory Factor 1 Recombinant Rabbit Monoclonal Antibody



Catalog #: 2990

Aliases

NRF1; Nuclear Respiratory Factor 1; Alpha Palindromic-Binding Protein; ALPHA-PAL; EWG; Alpha-Pal; NRF-1

Background

Gene Name: NRF1

NCBI Gene Entry: [4899](#)

UniProt Entry: [Q16656](#)

Application Information

Molecular Weight: Predicted, 54 kDa; observed, 68 kDa

Clonality: Rabbit monoclonal antibody

Clone ID: 24GB3515

Species Reactivity: Human, mouse, rat

Applications Tested: Western blotting (WB), flow cytometry (FCM), immunocytochemistry (IC)

Immunogen

A synthesized peptide derived from human NRF1

Isotype

Rabbit IgG

Storage Buffer

Supplied in PBS (pH 7.4) containing 50% glycerol, and 0.02% sodium azide.

Storage

Store at -20 °C for one year.

Recommended Dilutions

Western Blotting (WB): 1:1,000-1:5,000

Flow Cytometry (FCM): 1:2,000

Immunocytochemistry (IC): 1:100-1:1,000

Note: This product is for research use only.

Validation Data

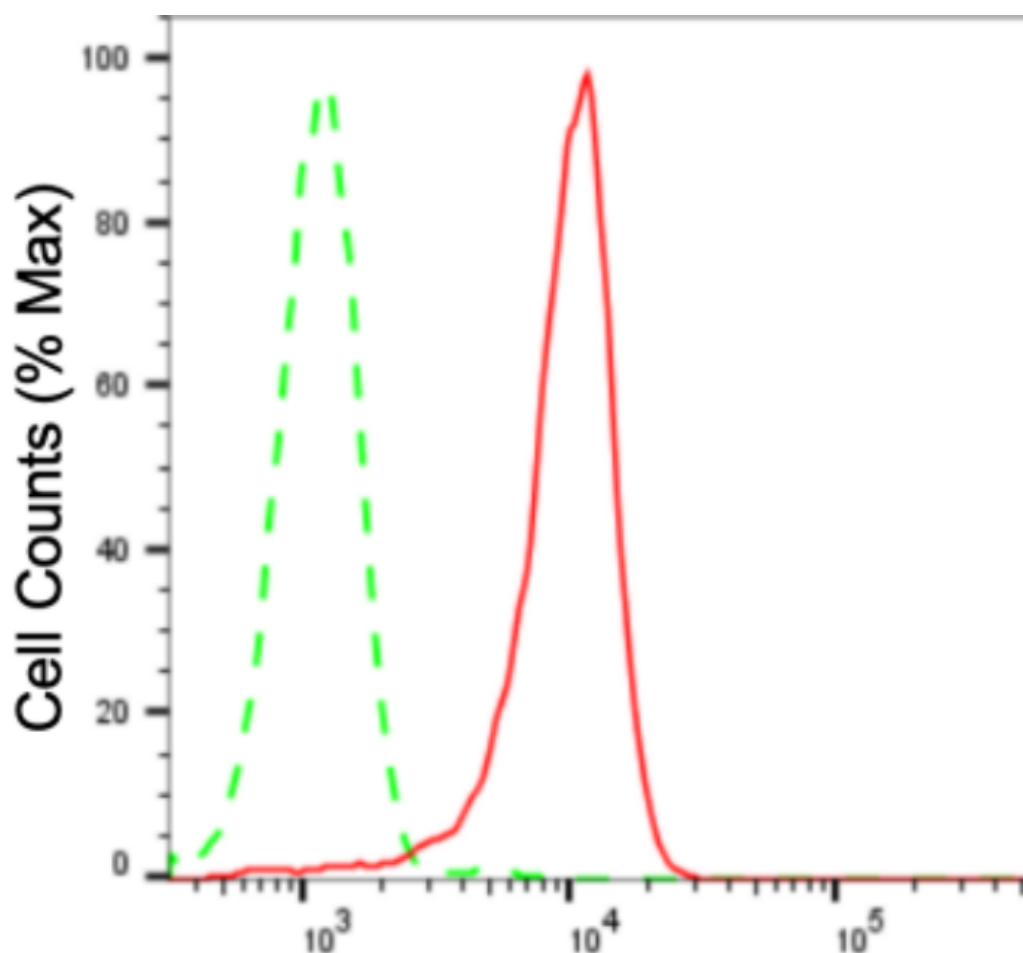
SUPPORT

SUPPORT@GENUINBIOTECH.COM
TEL: +1-540-855-7041

ORDERS

SALES@GENUINBIOTECH.COM
FAX: +1-540-855-7041

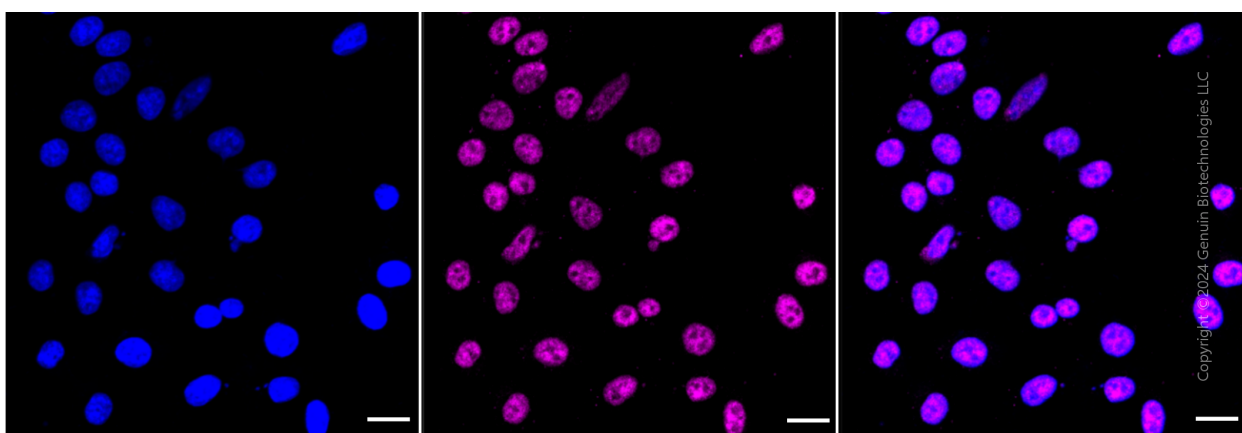
WWW.GENUINBIOTECH.COM



Copyright ©2024 Genuin Biotechnologies LLC

Nuclear respiratory factor 1-Alexa Fluor® 647

Flow cytometric analysis of Nuclear respiratory factor 1 expression in HepG2 cells using anti-Nuclear respiratory factor 1 antibody (Cat#2990, 1:2,000). Green, isotype control; red, Nuclear respiratory factor 1.



Copyright ©2024 Genuin Biotechnologies LLC

Immunocytochemical staining of HepG2 cells with anti-Nuclear respiratory factor 1 antibody (Cat#2990, 1:1,000). Nuclei were stained blue with DAPI; Nuclear respiratory factor 1 was

SUPPORT

SUPPORT@GENUINBIOTECH.COM
TEL: +1-540-855-7041

ORDERS

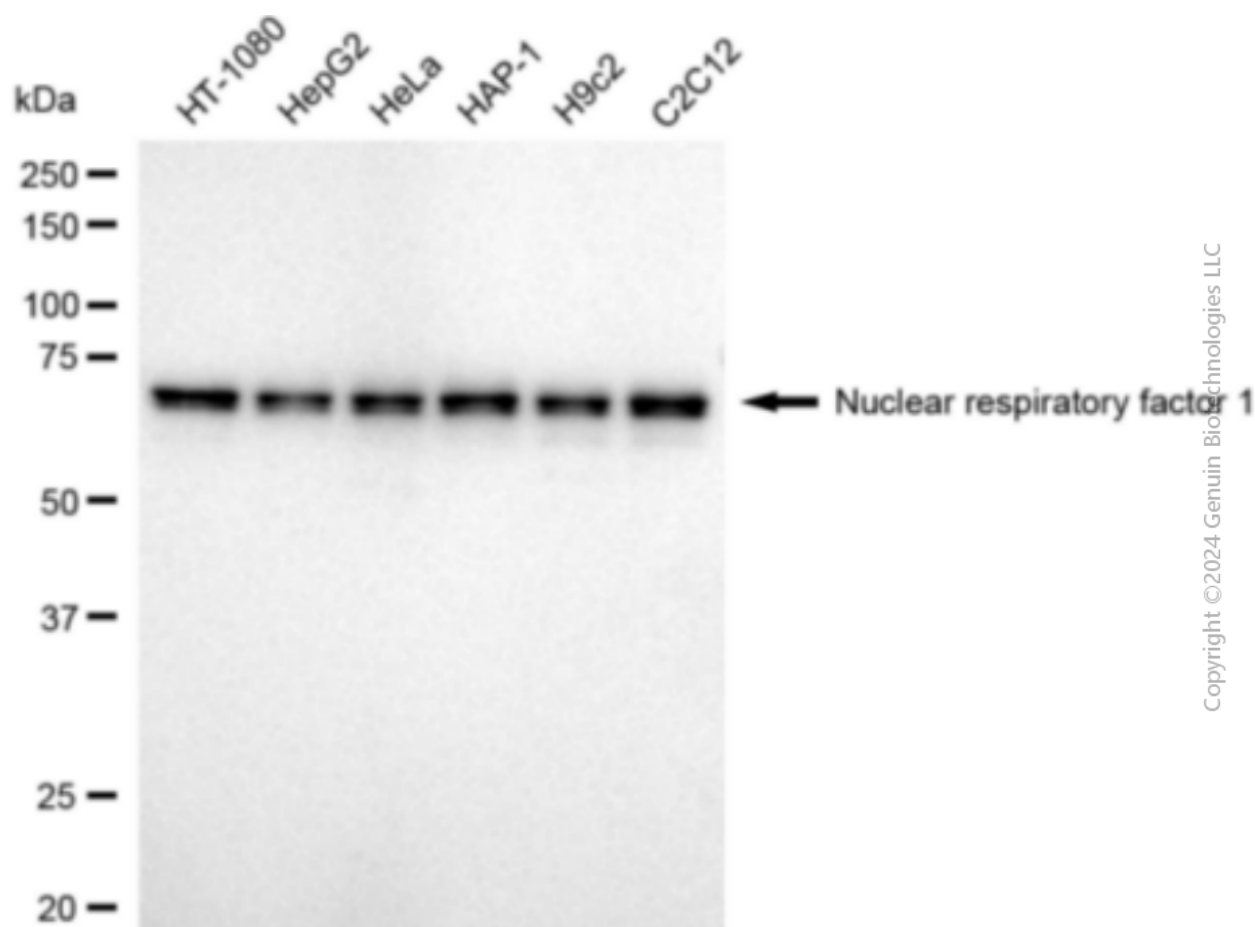
SALES@GENUINBIOTECH.COM
FAX: +1-540-855-7041

WWW.GENUINBIOTECH.COM

Anti-Nuclear Respiratory Factor 1 Recombinant Rabbit Monoclonal Antibody

PAGE 3

stained magenta with Alexa Fluor® 647. Images were taken using Leica stellaris 5. Protein abundance based on laser Intensity and smart gain: Medium. Scale bar: 20 µm.



Copyright ©2024 Genuin Biotechnologies LLC

Western blotting analysis using anti-Nuclear respiratory factor 1 antibody (Cat#2990). Total cell lysates (30 µg) from various cell lines were loaded and separated by SDS-PAGE. The blot was incubated with anti-Nuclear respiratory factor 1 antibody (Cat#2990, 1:5,000) and HRP-conjugated goat anti-rabbit secondary antibody (Cat#201, 1:20,000) respectively. Image was developed using FeQ™ ECL Substrate Kit (Cat#226).

SUPPORT

SUPPORT@GENUINBIOTECH.COM
TEL: +1-540-855-7041

ORDERS

SALES@GENUINBIOTECH.COM
FAX: +1-540-855-7041

WWW.GENUINBIOTECH.COM