

# Anti-DDAH1 Recombinant Rabbit Monoclonal Antibody



**Catalog #: 2991**

## Aliases

DDAH1; Dimethylarginine Dimethylaminohydrolase 1; DDAH; N(G),N(G)-Dimethylarginine Dimethylaminohydrolase 1; Dimethylargininase-1; EC 3.5.3.18; DDAH-1; DDAHI; NG, NG-Dimethylarginine Dimethylaminohydrolase; Epididymis Secretory Protein Li 16; HEL-S-16

## Background

Gene Name: DDAH1

NCBI Gene Entry: [23576](#)

UniProt Entry: [O94760](#)

## Application Information

Molecular Weight: Predicted, 31 kDa; observed, 36 kDa

Clonality: Rabbit monoclonal antibody

Clone ID: 24GB3520

Species Reactivity: Human

Applications Tested: Western blotting (WB), flow cytometry (FCM), immunocytochemistry (IC)

## Immunogen

A synthesized peptide derived from human DDAH1

## Isotype

Rabbit IgG

## Storage Buffer

Supplied in PBS (pH 7.4) containing 50% glycerol, and 0.02% sodium azide.

## Storage

Store at -20 °C for one year.

## Recommended Dilutions

Western Blotting (WB): 1:1,000-1:5,000

Flow Cytometry (FCM): 1:2,000

Immunocytochemistry (IC): 1:100-1:1,000

**Note:** This product is for research use only.

---

### SUPPORT

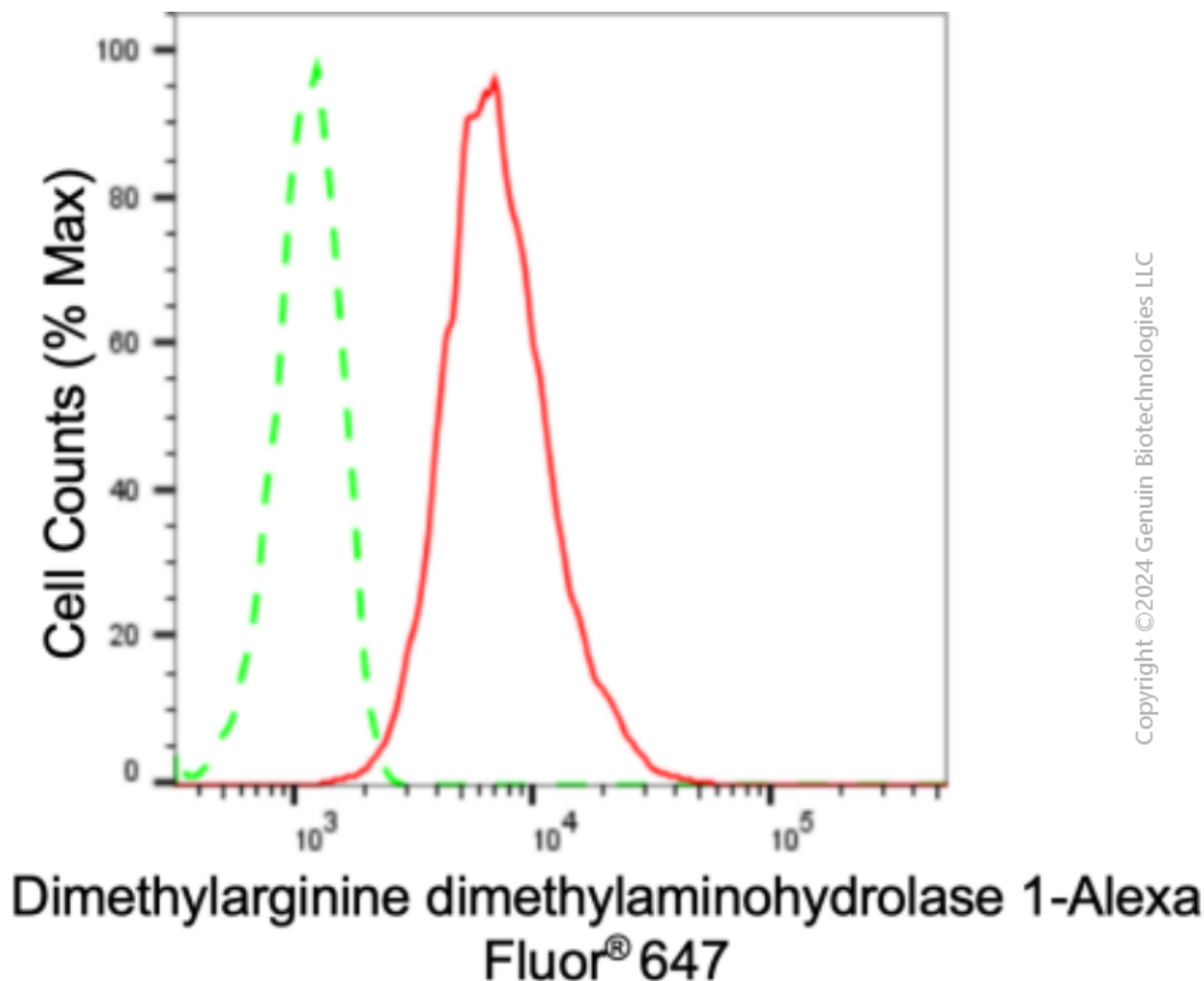
SUPPORT@GENUINBIOTECH.COM  
TEL: +1-540-855-7041

### ORDERS

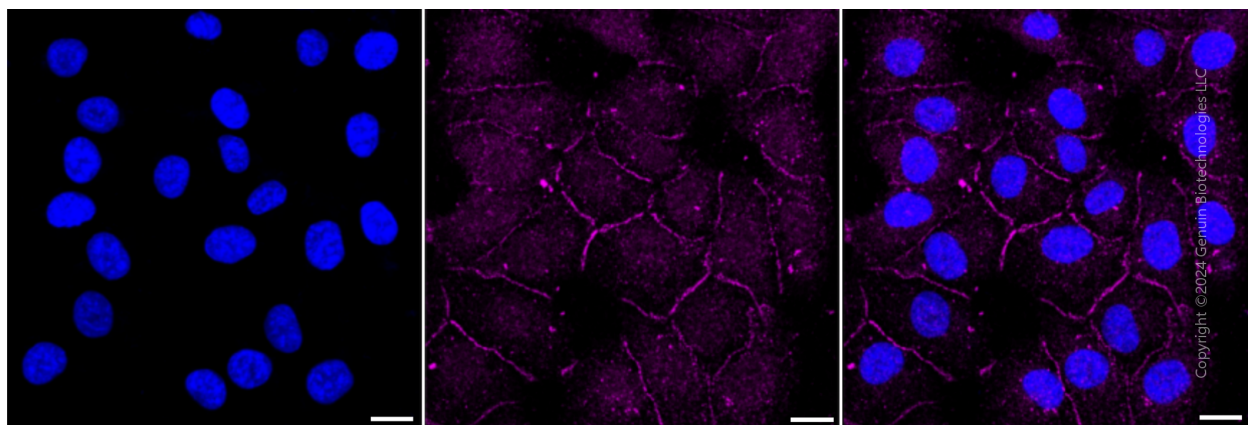
SALES@GENUINBIOTECH.COM  
FAX: +1-540-855-7041

[WWW.GENUINBIOTECH.COM](http://WWW.GENUINBIOTECH.COM)

## Validation Data



Flow cytometric analysis of Dimethylarginine dimethylaminohydrolase 1 expression in HT-1080 cells using anti-Dimethylarginine dimethylaminohydrolase 1 antibody (Cat#2991, 1:2,000). Green, isotype control; red, Dimethylarginine dimethylaminohydrolase 1.



Immunocytochemical staining of HT-1080 cells with anti-Dimethylarginine

### SUPPORT

SUPPORT@GENUINBIOTECH.COM  
TEL: +1-540-855-7041

### ORDERS

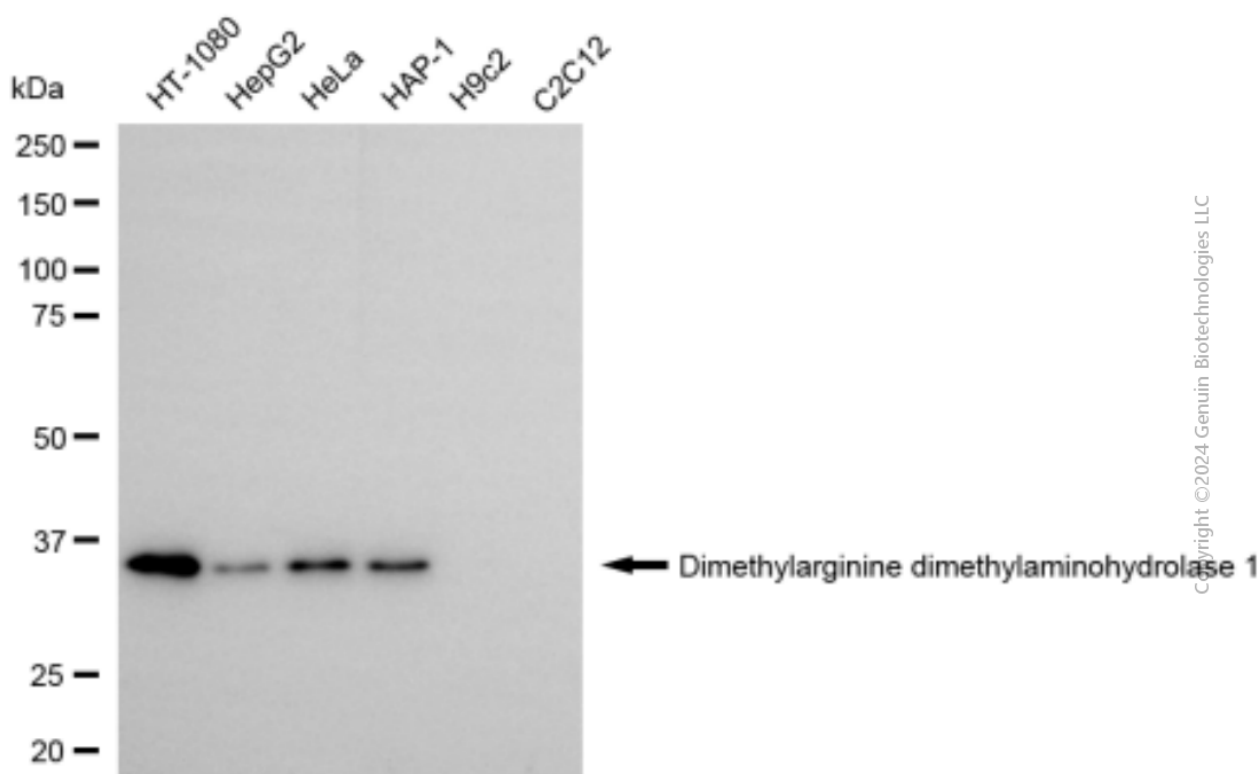
SALES@GENUINBIOTECH.COM  
FAX: +1-540-855-7041

WWW.GENUINBIOTECH.COM

## Anti-DDAH1 Recombinant Rabbit Monoclonal Antibody

PAGE 3

dimethylaminohydrolase 1 antibody (Cat#2991, 1:1,000) . Nuclei were stained blue with DAPI; Dimethylarginine dimethylaminohydrolase 1 was stained magenta with Alexa Fluor® 647. Images were taken using leica stellaris 5. Protein abundance based on laser intensity and smart gain: Medium. Scale bar: 20  $\mu$ m.



Western blotting analysis using anti-Dimethylarginine dimethylaminohydrolase 1 antibody (Cat#2991). Total cell lysates (30  $\mu$ g) from various cell lines were loaded and separated by SDS-PAGE. The blot was incubated with anti-Dimethylarginine dimethylaminohydrolase 1 antibody (Cat#2991, 1:5,000) and HRP-conjugated goat anti-rabbit secondary antibody (Cat#201, 1:20,000) respectively. Image was developed using FeQ™ ECL Substrate Kit (Cat#226).

### SUPPORT

SUPPORT@GENUINBIOTECH.COM  
TEL: +1-540-855-7041

### ORDERS

SALES@GENUINBIOTECH.COM  
FAX: +1-540-855-7041

WWW.GENUINBIOTECH.COM