

Anti-MELK Recombinant Rabbit Monoclonal Antibody



Catalog #: 2993

Aliases

MELK; Maternal Embryonic Leucine Zipper Kinase; KIAA0175; Tyrosine-Protein Kinase
MELK; Protein Kinase PK38; Protein Kinase Eg3; PEg3 Kinase; EC 2.7.11.1; HPK38; EC
2.7.10.2; EC 2.7.11; HMELK

Background

Gene Name: MELK
NCBI Gene Entry: [9833](#)
UniProt Entry: [Q14680](#)

Application Information

Molecular Weight: Predicted, 75 kDa; observed, 70 kDa
Clonality: Rabbit monoclonal antibody
Clone ID: 24GB3530
Species Reactivity: Human, mouse, rat
Applications Tested: Western blotting (WB), flow cytometry (FCM), immunocytochemistry (IC)

Immunogen

A synthesized peptide derived from human MELK

Isotype

Rabbit IgG

Storage Buffer

Supplied in PBS (pH 7.4) containing 50% glycerol, and 0.02% sodium azide.

Storage

Store at -20 °C for one year.

Recommended Dilutions

Western Blotting (WB): 1:1,000-1:5,000
Flow Cytometry (FCM): 1:2,000
Immunocytochemistry (IC): 1:100-1:1,000

Note: This product is for research use only.

SUPPORT

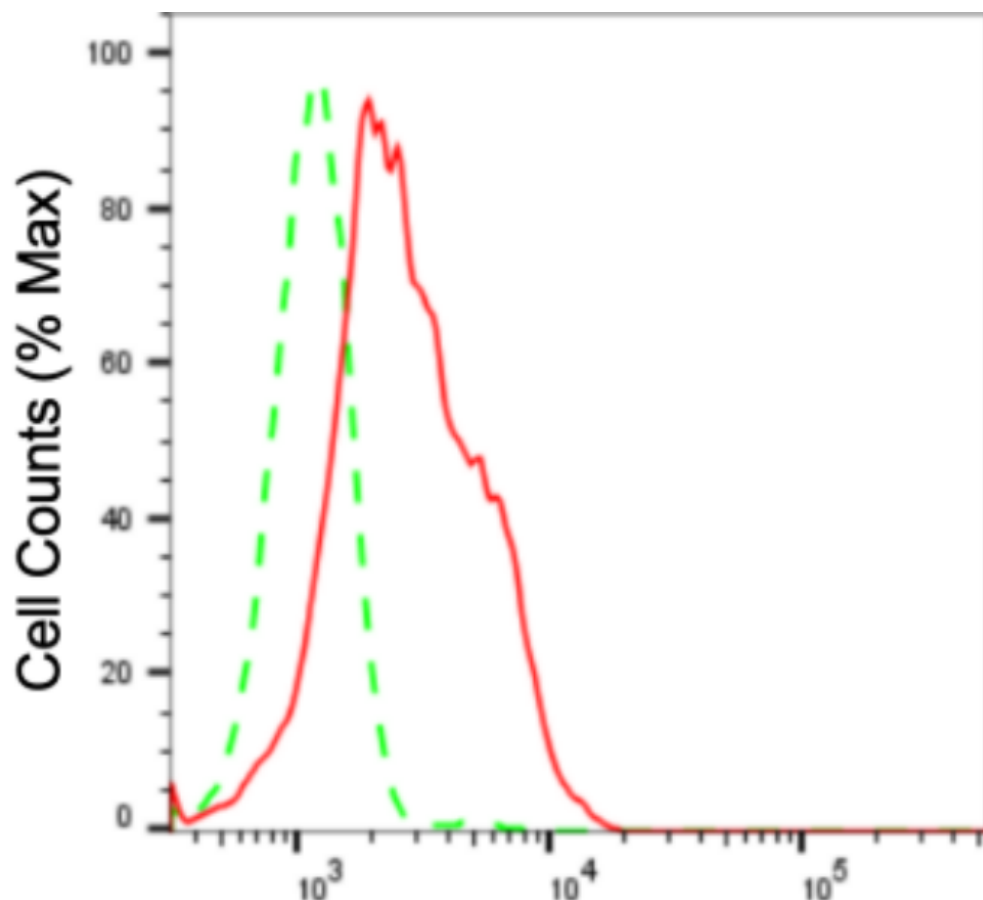
SUPPORT@GENUINBIOTECH.COM
TEL: +1-540-855-7041

ORDERS

SALES@GENUINBIOTECH.COM
FAX: +1-540-855-7041

WWW.GENUINBIOTECH.COM

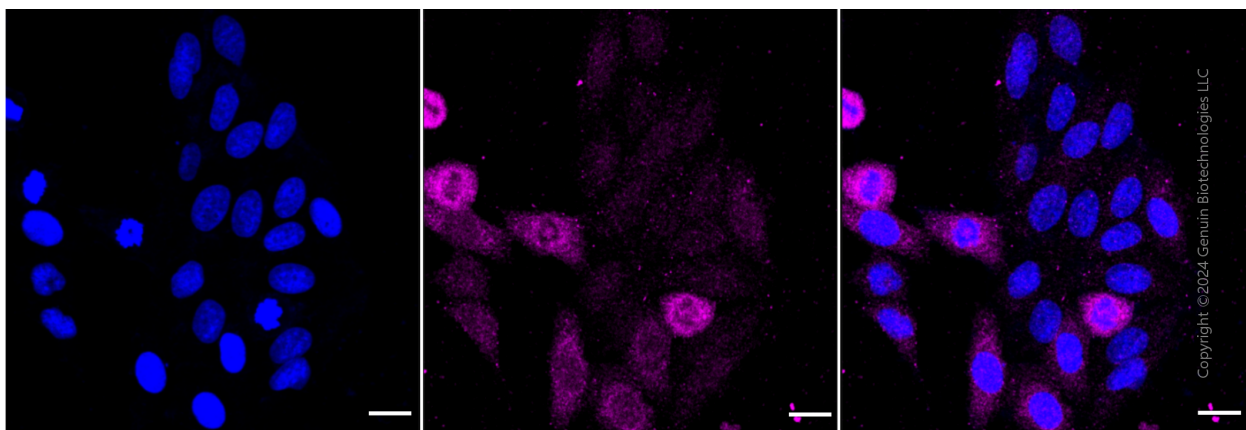
Validation Data



Copyright ©2024 Genuin Biotechnologies LLC

Maternal embryonic leucine zipper kinase-Alexa Fluor® 647

Flow cytometric analysis of Maternal embryonic leucine zipper kinase expression in HepG2 cells using anti-Maternal embryonic leucine zipper kinase antibody (Cat#2993, 1:2,000). Green, isotype control; red, Maternal embryonic leucine zipper kinase.



Copyright ©2024 Genuin Biotechnologies LLC

SUPPORT

SUPPORT@GENUINBIOTECH.COM
TEL: +1-540-855-7041

ORDERS

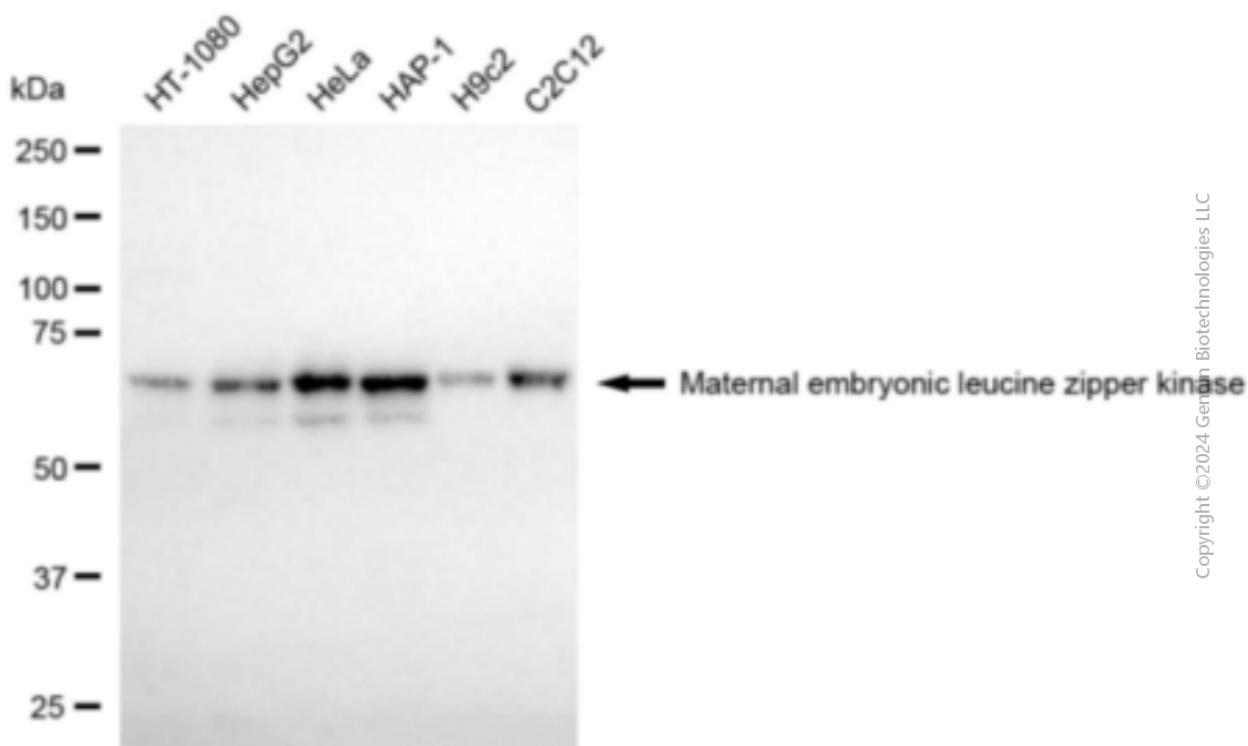
SALES@GENUINBIOTECH.COM
FAX: +1-540-855-7041

WWW.GENUINBIOTECH.COM

Anti-MELK Recombinant Rabbit Monoclonal Antibody

PAGE 3

Immunocytochemical staining of HepG2 cells with anti-maternal embryonic leucine zipper kinase antibody (Cat#2993, 1:1,000). Nuclei were stained blue with DAPI; Maternal embryonic leucine zipper kinase was stained magenta with Alexa Fluor® 647. Images were taken using Leica stellaris 5. Protein abundance based on laser Intensity and smart gain: Medium. Scale bar: 20 μ m.



Western blotting analysis using anti-Maternal embryonic leucine zipper kinase antibody (Cat#2993). Total cell lysates (30 μ g) from various cell lines were loaded and separated by SDS-PAGE. The blot was incubated with anti-Maternal embryonic leucine zipper kinase antibody (Cat#2993, 1:5,000) and HRP-conjugated goat anti-rabbit secondary antibody (Cat#201, 1:20,000) respectively. Image was developed using FeQ™ ECL Substrate Kit (Cat#226).

SUPPORT

SUPPORT@GENUINBIOTECH.COM
TEL: +1-540-855-7041

ORDERS

SALES@GENUINBIOTECH.COM
FAX: +1-540-855-7041

WWW.GENUINBIOTECH.COM