

Anti-MS4A14 Recombinant Rabbit Monoclonal Antibody



Catalog #: 2996

Aliases

MS4A14; Membrane Spanning 4-Domains A14; NYD-SP21; MS4A16; Membrane-Spanning 4-Domains, Subfamily A, Member 16; Membrane-Spanning 4-Domains Subfamily A Member 14; Testis Development Protein NYD-SP21; DKFZp434H092; FLJ32856; Membrane-Spanning 4-Domains, Subfamily A, Member 14; Testes Development-Related NYD-SP21; MS4A13 Protein; MS4A13

Background

Gene Name: MS4A14

NCBI Gene Entry: [84689](#)

UniProt Entry: [Q96JA4](#)

Application Information

Molecular Weight: Predicted, 77 kDa; observed, 70 kDa

Clonality: Rabbit monoclonal antibody

Clone ID: 24GB3545

Species Reactivity: Human, mouse

Applications Tested: Western blotting (WB), immunocytochemistry (IC)

Immunogen

A synthesized peptide derived from human MS4A14

Isotype

Rabbit IgG

Storage Buffer

Supplied in PBS (pH 7.4) containing 50% glycerol, and 0.02% sodium azide.

Storage

Store at -20 °C for one year.

Recommended Dilutions

Western Blotting (WB): 1:1,000-1:5,000

Immunocytochemistry (IC): 1:100-1:1,000

SUPPORT

SUPPORT@GENUINBIOTECH.COM
TEL: +1-540-855-7041

ORDERS

SALES@GENUINBIOTECH.COM
FAX: +1-540-855-7041

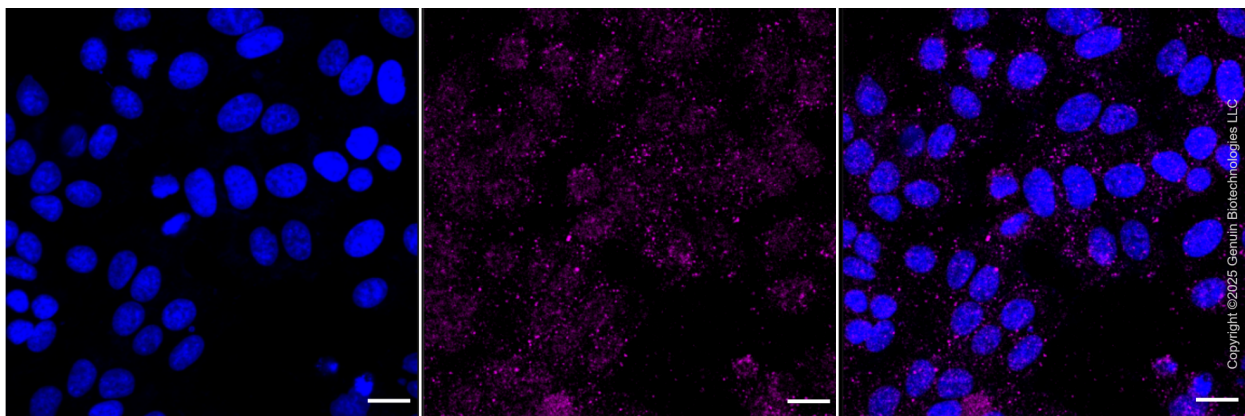
WWW.GENUINBIOTECH.COM

Anti-MS4A14 Recombinant Rabbit Monoclonal Antibody

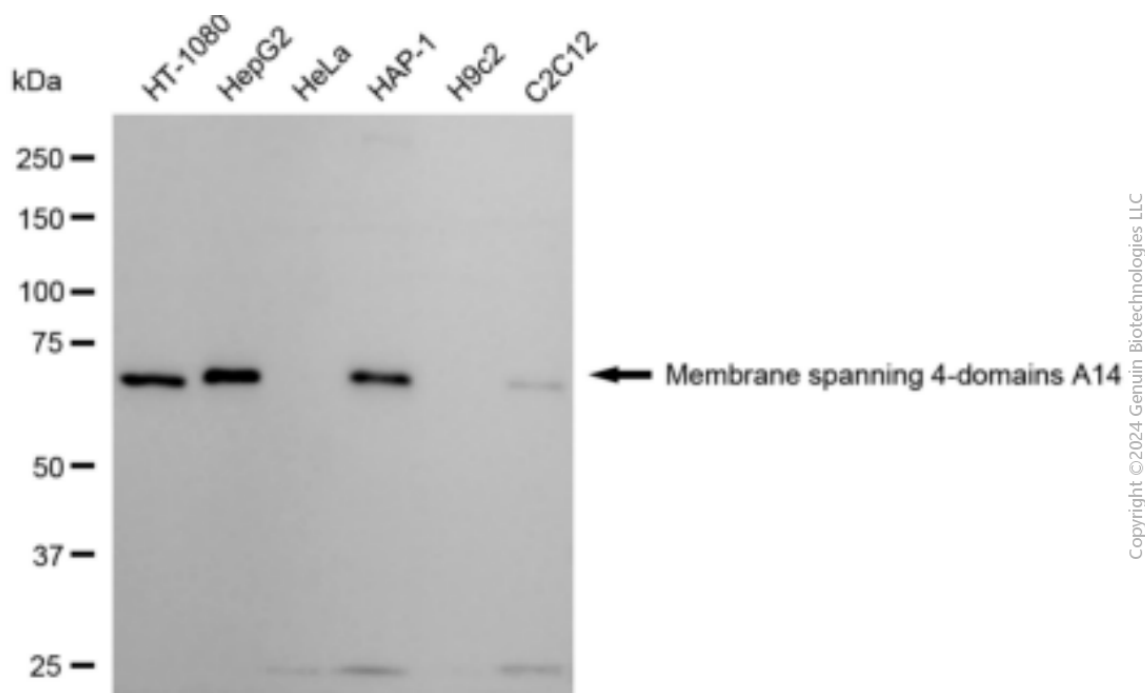
PAGE 2

Note: This product is for research use only.

Validation Data



Immunocytochemical staining of HepG2 cells with membrane spanning 4-domains A14 antibody (Cat#2996, 1:1,000). Nuclei were stained blue with DAPI; Membrane spanning 4-domains A14 was stained magenta with Alexa Fluor® 647. Images were taken using Leica stellaris 5. Protein abundance based on laser Intensity and smart gain: Low. Scale bar: 20 µm.



Western blotting analysis using anti-Membrane spanning 4-domains A14 antibody (Cat#2996). Total cell lysates (30 µg) from various cell lines were loaded and separated by SDS-PAGE. The blot was incubated with anti-Membrane spanning 4-domains A14 antibody (Cat#2996, 1:5,000) and HRP-conjugated goat anti-rabbit secondary antibody (Cat#201, 1:20,000) respectively. Image was developed using FeQ™ ECL Substrate Kit (Cat#226).

SUPPORT

SUPPORT@GENUINBIOTECH.COM
TEL: +1-540-855-7041

ORDERS

SALES@GENUINBIOTECH.COM
FAX: +1-540-855-7041

WWW.GENUINBIOTECH.COM

SUPPORT

SUPPORT@GENUINBIOTECH.COM
TEL: +1-540-855-7041

ORDERS

SALES@GENUINBIOTECH.COM
FAX:+1-540-855-7041

WWW.GENUINBIOTECH.COM