

Anti-Methionine Sulfoxide Reductase B3 Recombinant Rabbit Monoclonal Antibody



Catalog #: 2997

Aliases

MSRB3; Methionine Sulfoxide Reductase B3; Methionine-R-Sulfoxide Reductase B3; DKFZp686C1178; EC 1.8.4.12; FLJ36866; DFNB74; Methionine-R-Sulfoxide Reductase B3, Mitochondrial; Deafness, Autosomal Recessive 74; EC 1.8.4.14; MsrB3

Background

Gene Name: MSRB3

NCBI Gene Entry: [253827](#)

UniProt Entry: [Q8IXL7](#)

Application Information

Molecular Weight: Predicted, 21 kDa; observed, 21 kDa

Clonality: Rabbit monoclonal antibody

Clone ID: 24GB3550

Species Reactivity: Human, mouse, rat

Applications Tested: Western blotting (WB), immunocytochemistry (IC)

Immunogen

A synthesized peptide derived from human MSRB3

Isotype

Rabbit IgG

Storage Buffer

Supplied in PBS (pH 7.4) containing 50% glycerol, and 0.02% sodium azide.

Storage

Store at -20 °C for one year.

Recommended Dilutions

Western Blotting (WB): 1:1,000-1:5,000

Immunocytochemistry (IC): 1:100-1:1,000

Note: This product is for research use only.

Validation Data

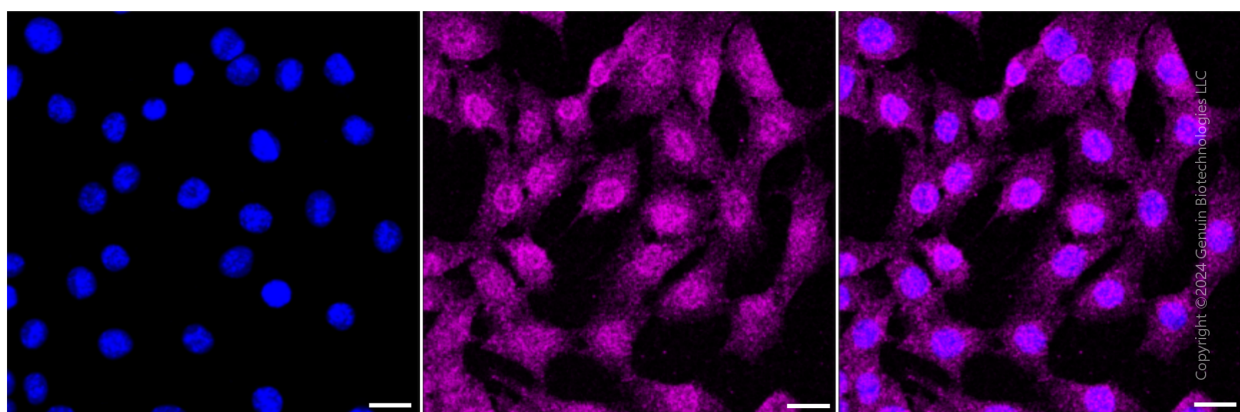
SUPPORT

SUPPORT@GENUINBIOTECH.COM
TEL: +1-540-855-7041

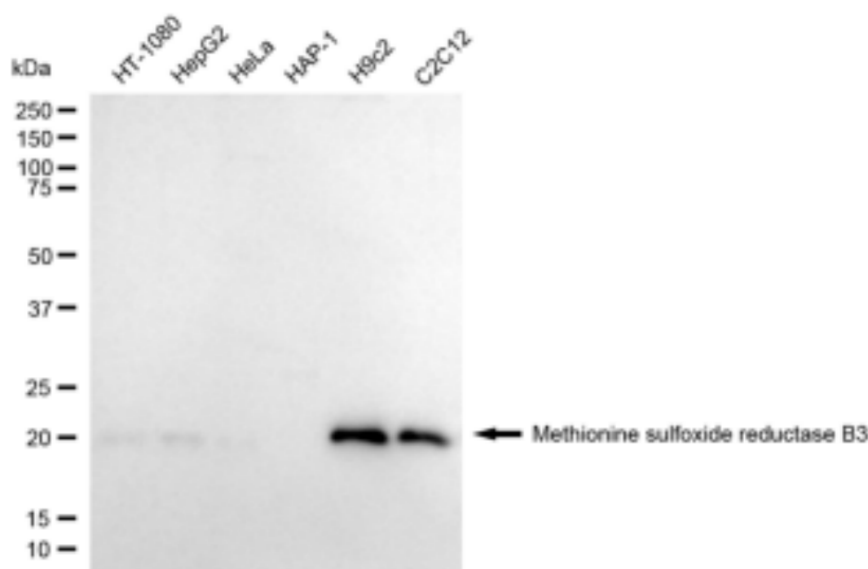
ORDERS

SALES@GENUINBIOTECH.COM
FAX: +1-540-855-7041

WWW.GENUINBIOTECH.COM



Immunocytochemical staining of C2C12 cells with anti-Methionine sulfoxide reductase B3 antibody (Cat#2997, 1:1,000) . Nuclei were stained blue with DAPI; Methionine sulfoxide reductase B3 was stained magenta with Alexa Fluor® 647. Images were taken using leica stellaris 5. Protein abundance based on laser intensity and smart gain: Medium. Scale bar: 20 μ m.



Western blotting analysis using anti-Methionine sulfoxide reductase B3 antibody (Cat#2997). Total cell lysates (30 μ g) from various cell lines were loaded and separated by SDS-PAGE. The blot was incubated with anti-Methionine sulfoxide reductase B3 antibody (Cat#2997, 1:5,000) and HRP-conjugated goat anti-rabbit secondary antibody (Cat#201, 1:20,000) respectively. Image was developed using FeQ™ ECL Substrate Kit (Cat#226).