

Anti-5-Azacytidine Induced 2 Recombinant Rabbit Monoclonal Antibody



Catalog #: 2998

Aliases

AZI2; 5-Azacytidine Induced 2; NAP1; AZ2; NF-Kappa-B-Activating Kinase-Associated Protein 1; 5-Azacytidine-Induced Protein 2; FLJ21939; TILP; 5-Azacytidine Induced Gene 2; NAK-Associated Protein 1; Nak-Associated Protein 1; TBKBP2; Nap1

Background

Gene Name: AZI2

NCBI Gene Entry: [64343](#)

UniProt Entry: [Q9H6S1](#)

Application Information

Molecular Weight: Predicted, 45 kDa; observed, 45 kDa

Clonality: Rabbit monoclonal antibody

Clone ID: 24GB3555

Species Reactivity: Human, mouse, rat

Applications Tested: Western blotting (WB), immunocytochemistry (IC), flow cytometry (FCM)

Immunogen

A synthesized peptide derived from human AZI2

Isotype

Rabbit IgG

Storage Buffer

Supplied in PBS (pH 7.4) containing 50% glycerol, and 0.02% sodium azide.

Storage

Store at -20 °C for one year.

Recommended Dilutions

Western Blotting (WB): 1:1,000-1:5,000

Immunocytochemistry (IC): 1:100-1:1,000

Flow Cytometry (FCM): 1:2,000

Note: This product is for research use only.

SUPPORT

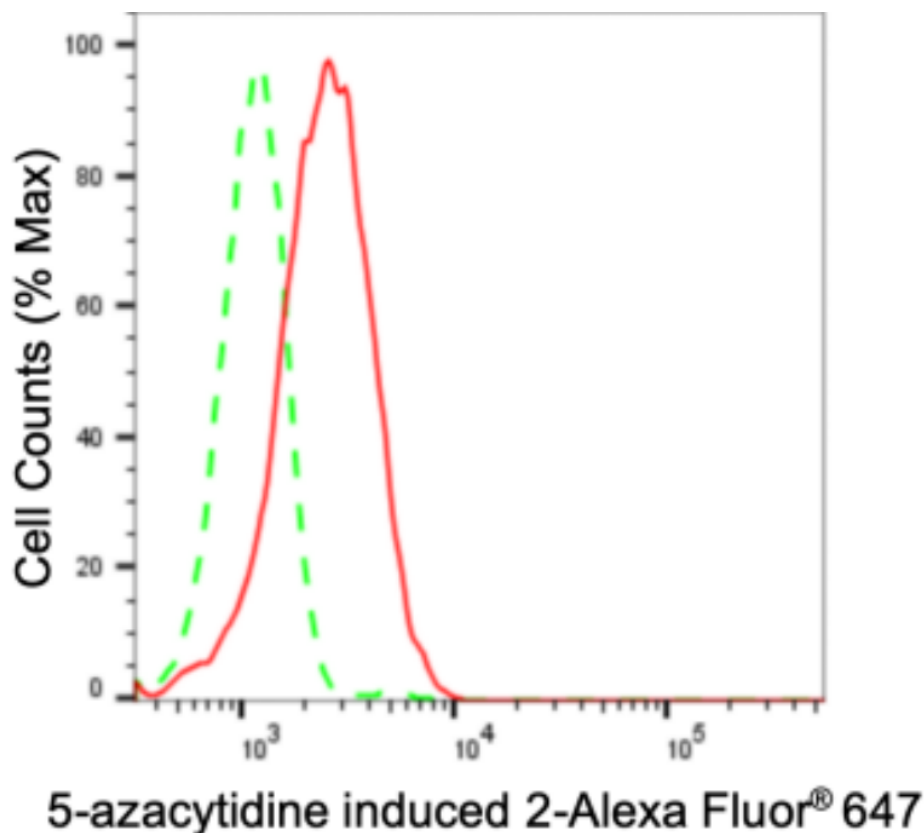
SUPPORT@GENUINBIOTECH.COM
TEL: +1-540-855-7041

ORDERS

SALES@GENUINBIOTECH.COM
FAX: +1-540-855-7041

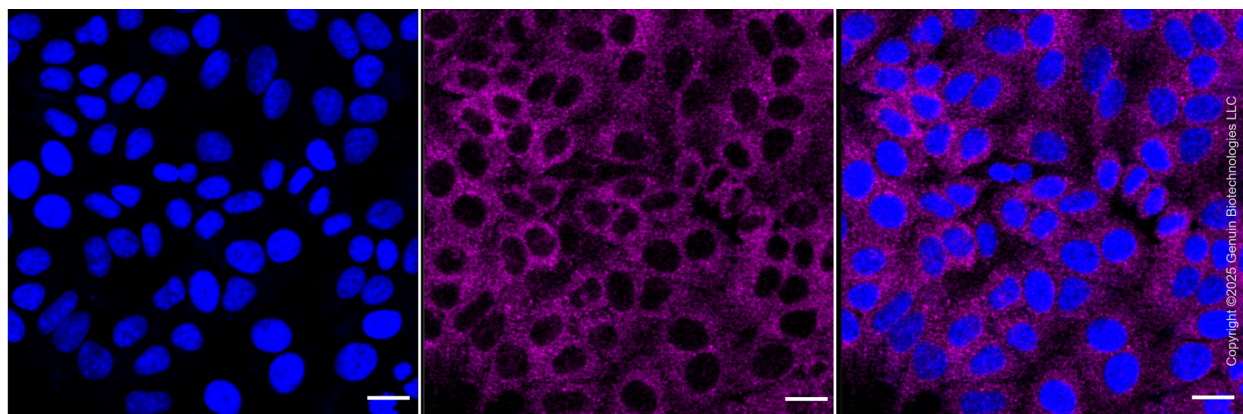
WWW.GENUINBIOTECH.COM

Validation Data



Copyright ©2024 Genuin Biotechnologies LLC

Flow cytometric analysis of 5-azacytidine induced 2 expression in HepG2 cells using anti-5-azacytidine induced 2 antibody (Cat#2998, 1:2,000). Green, isotype control; red, 5-azacytidine induced 2.



Immunocytochemical staining of HepG2 cells with 5-azacytidine induced 2 antibody (Cat#2998, 1:1,000). Nuclei were stained blue with DAPI; 5-azacytidine induced 2 was stained magenta with Alexa Fluor® 647. Images were taken using Leica stellaris 5. Protein abundance based on laser Intensity and smart gain: Medium. Scale bar: 20 µm.

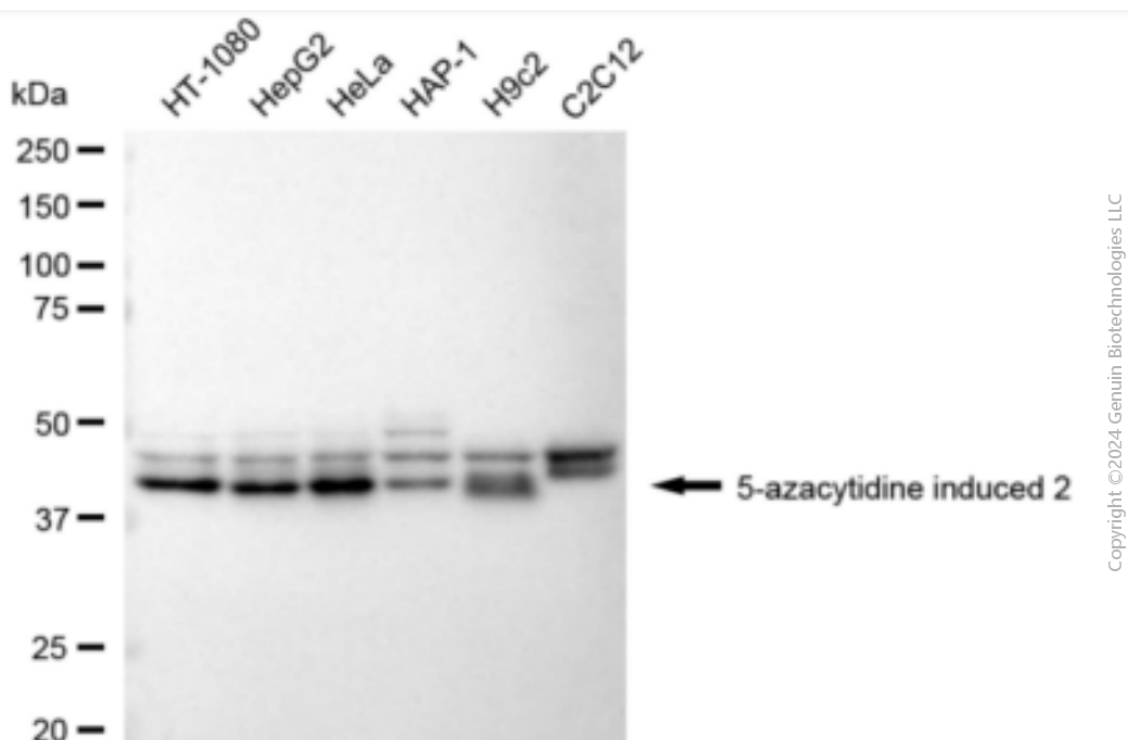
SUPPORT

SUPPORT@GENUINBIOTECH.COM
TEL: +1-540-855-7041

ORDERS

SALES@GENUINBIOTECH.COM
FAX: +1-540-855-7041

WWW.GENUINBIOTECH.COM



Western blotting analysis using anti-5-azacytidine induced 2 antibody (Cat#2998). Total cell lysates (30 μ g) from various cell lines were loaded and separated by SDS-PAGE. The blot was incubated with anti-5-azacytidine induced 2 antibody (Cat#2998, 1:5,000) and HRP-conjugated goat anti-rabbit secondary antibody (Cat#201, 1:20,000) respectively. Image was developed using FeQ™ ECL Substrate Kit (Cat#226).