

Anti-Myosin IB Recombinant Rabbit Monoclonal Antibody



Catalog #: 2999

Aliases

MYO1B; Myosin IB; Myr1; Unconventional Myosin-Ib; MMI-Alpha; MYH-1c; MMI; MYO1B Variant Protein; Myosin-I Alpha; Myosin I Alpha

Background

Gene Name: MYO1B

NCBI Gene Entry: [4430](#)

UniProt Entry: [O43795](#)

Application Information

Molecular Weight: Predicted, 132 kDa; observed, 132 kDa

Clonality: Rabbit monoclonal antibody

Clone ID: 24GB3560

Species Reactivity: Human, mouse

Applications Tested: Western blotting (WB), immunocytochemistry (IC), flow cytometry (FCM)

Immunogen

A synthesized peptide derived from human MYO1B

Isotype

Rabbit IgG

Storage Buffer

Supplied in PBS (pH 7.4) containing 50% glycerol, and 0.02% sodium azide.

Storage

Store at -20 °C for one year.

Recommended Dilutions

Western Blotting (WB): 1:1,000-1:5,000

Immunocytochemistry (IC): 1:100-1:1,000

Flow Cytometry (FCM): 1:2,000

Note: This product is for research use only.

Validation Data

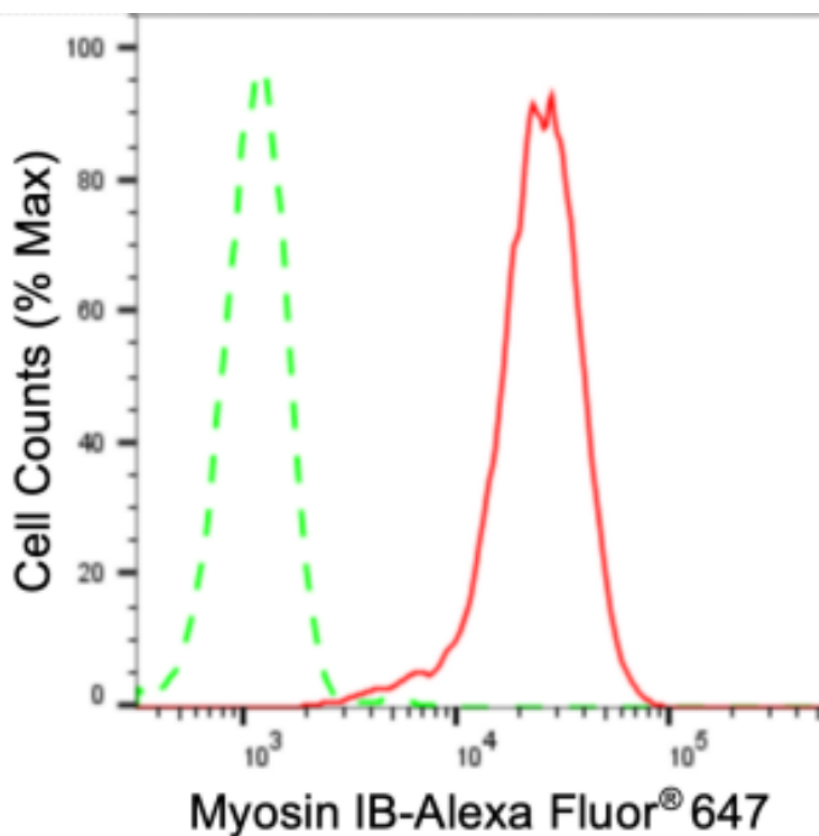
SUPPORT

SUPPORT@GENUINBIOTECH.COM
TEL: +1-540-855-7041

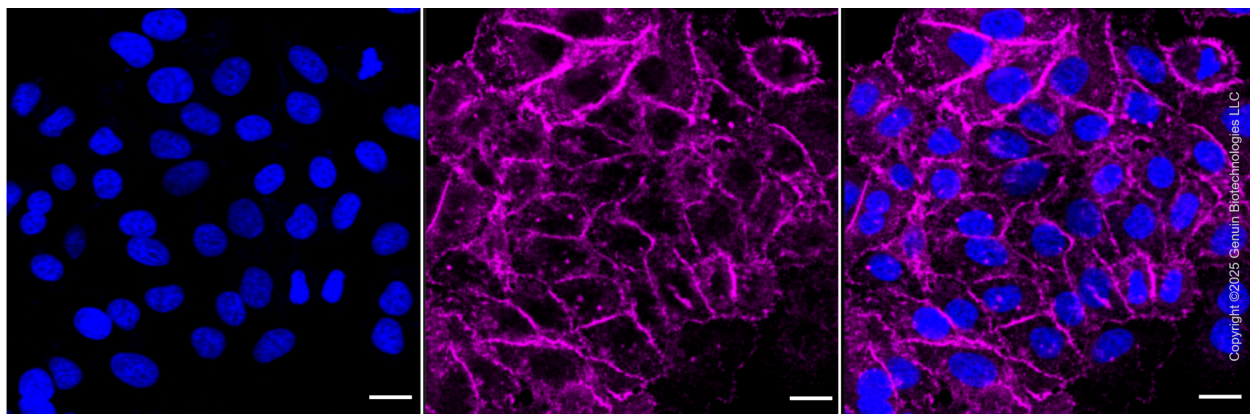
ORDERS

SALES@GENUINBIOTECH.COM
FAX: +1-540-855-7041

WWW.GENUINBIOTECH.COM



Flow cytometric analysis of Myosin IB expression in HepG2 cells using anti-Myosin IBc antibody (Cat#2999, 1:2,000). Green, isotype control; red, Myosin IB.



Immunocytochemical staining of HepG2 cells with myosin IB antibody (Cat#2999, 1:1,000). Nuclei were stained blue with DAPI; HepG2 was stained magenta with Alexa Fluor® 647. Images were taken using Leica stellaris 5. Protein abundance based on laser Intensity and smart gain: Medium. Scale bar: 20 μ m.

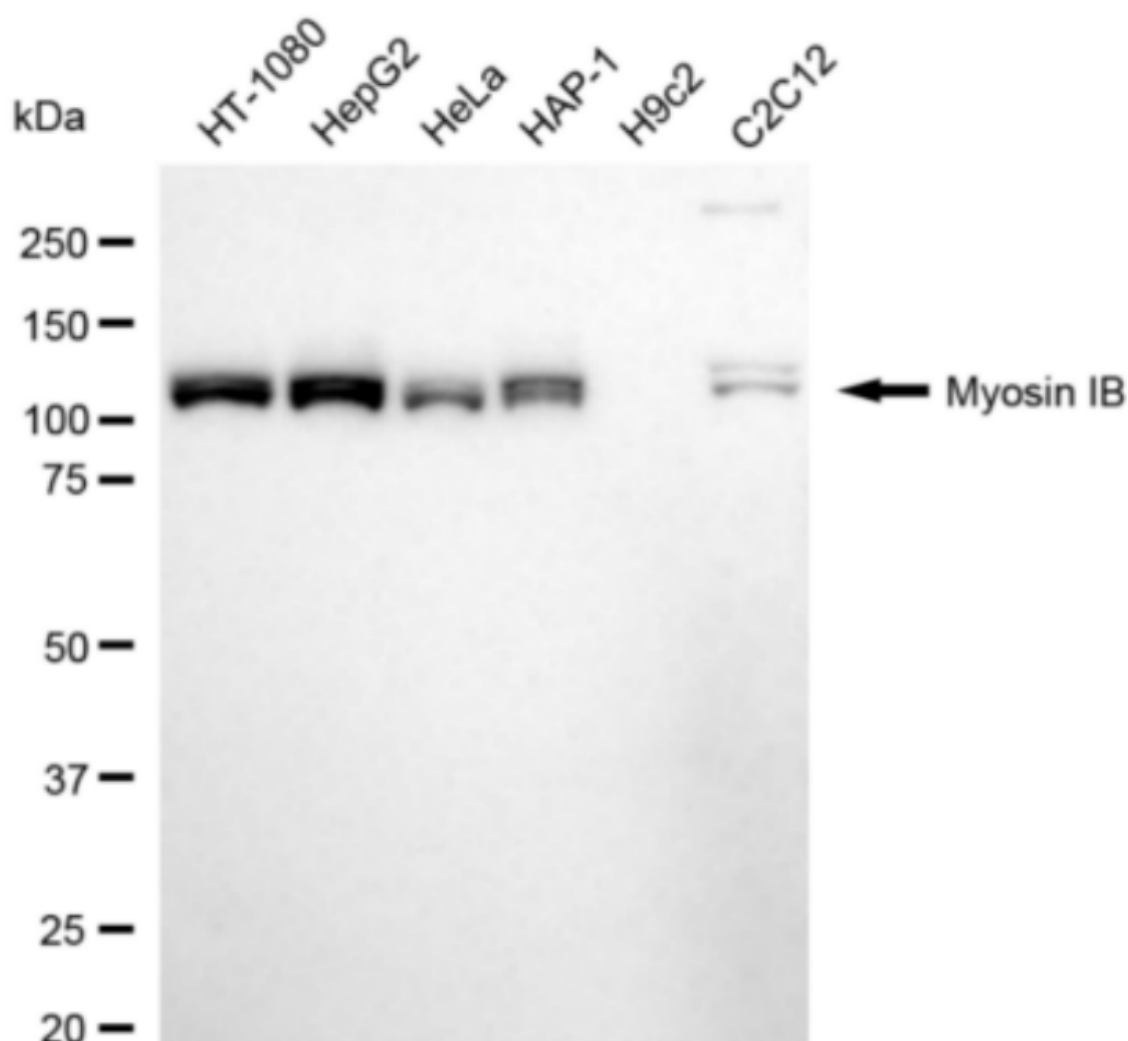
SUPPORT

SUPPORT@GENUINBIOTECH.COM
TEL: +1-540-855-7041

ORDERS

SALES@GENUINBIOTECH.COM
FAX: +1-540-855-7041

WWW.GENUINBIOTECH.COM



Copyright ©2024 Genuin Biotechnologies LLC

Western blotting analysis using anti-Myosin IB antibody (Cat#2999). Total cell lysates (30 µg) from various cell lines were loaded and separated by SDS-PAGE. The blot was incubated with anti-Myosin IB antibody (Cat#2999, 1:5,000) and HRP-conjugated goat anti-rabbit secondary antibody (Cat#201, 1:20,000) respectively. Image was developed using FeQ™ ECL Substrate Kit (Cat#226).