

Anti-Exocyst Complex Component 2 Recombinant Rabbit Monoclonal Antibody



Catalog #: 3002

Aliases

EXOC2; Exocyst Complex Component 2; SEC5L1; Sec5; Exocyst Complex Component Sec5; FLJ11026; SEC5-Like 1 (S. Cerevisiae); SEC5-Like 1; NEDFACH; Sec5p; SEC5

Background

Gene Name: EXOC2

NCBI Gene Entry: [55770](#)

UniProt Entry: [Q96KP1](#)

Application Information

Molecular Weight: Predicted, 104 kDa; observed, 98 kDa

Clonality: Rabbit monoclonal antibody

Clone ID: 24GB3575

Species Reactivity: Human, mouse, rat

Applications Tested: Western blotting (WB), flow cytometry (FCM), immunocytochemistry (IC)

Immunogen

A synthesized peptide derived from human EXOC2

Isotype

Rabbit IgG

Storage Buffer

Supplied in PBS (pH 7.4) containing 50% glycerol, and 0.02% sodium azide.

Storage

Store at -20 °C for one year.

Recommended Dilutions

Western Blotting (WB): 1:1,000-1:5,000

Flow Cytometry (FCM): 1:2,000

Immunocytochemistry (IC): 1:100-1:1,000

Note: This product is for research use only.

Validation Data

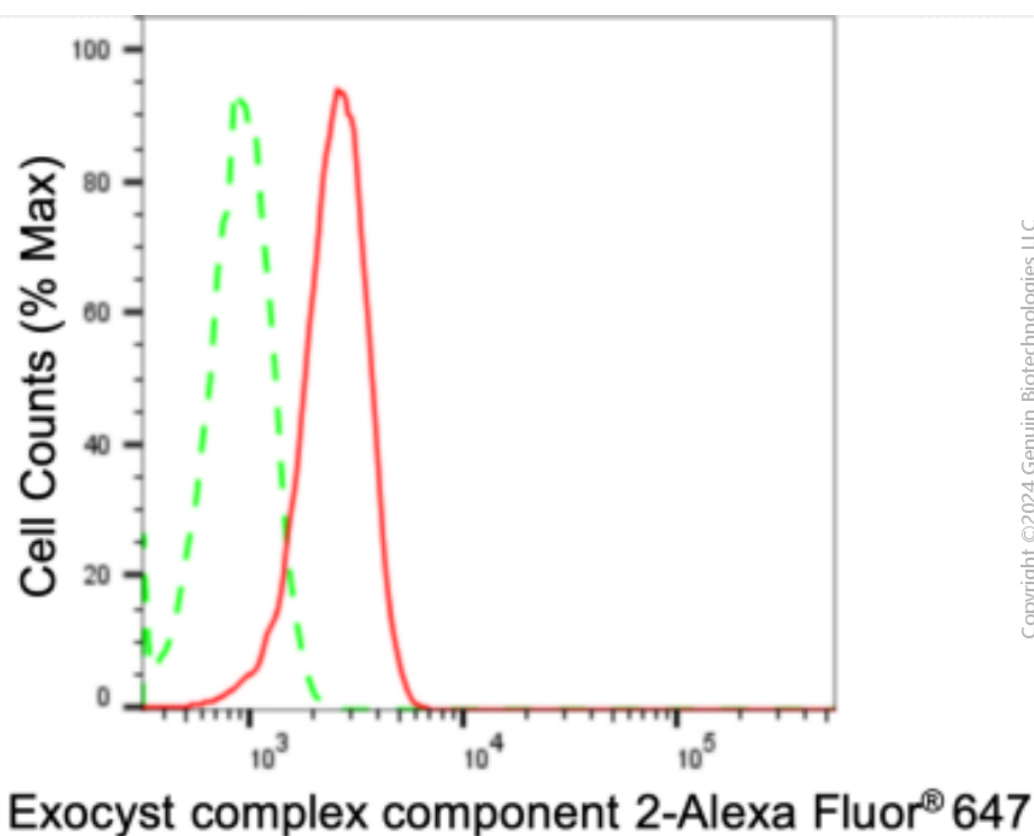
SUPPORT

SUPPORT@GENUINBIOTECH.COM
TEL: +1-540-855-7041

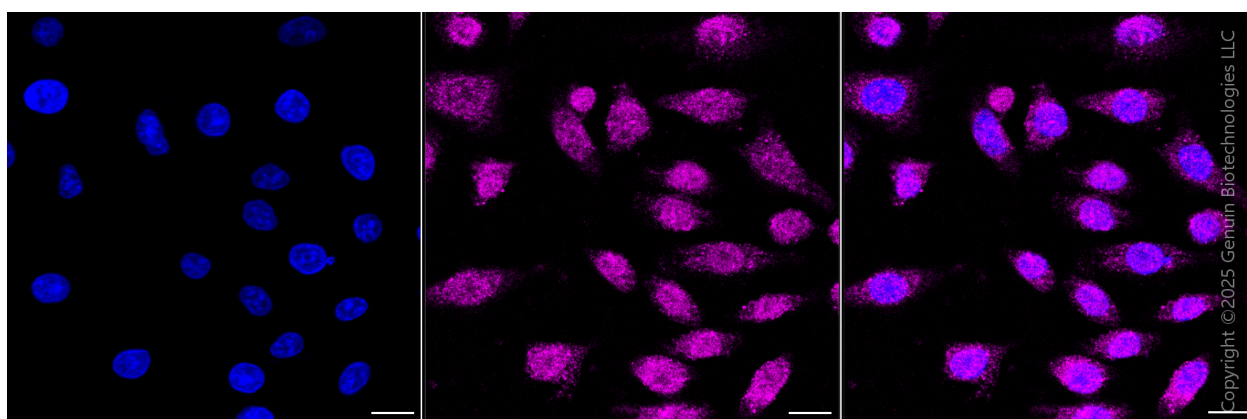
ORDERS

SALES@GENUINBIOTECH.COM
FAX: +1-540-855-7041

WWW.GENUINBIOTECH.COM



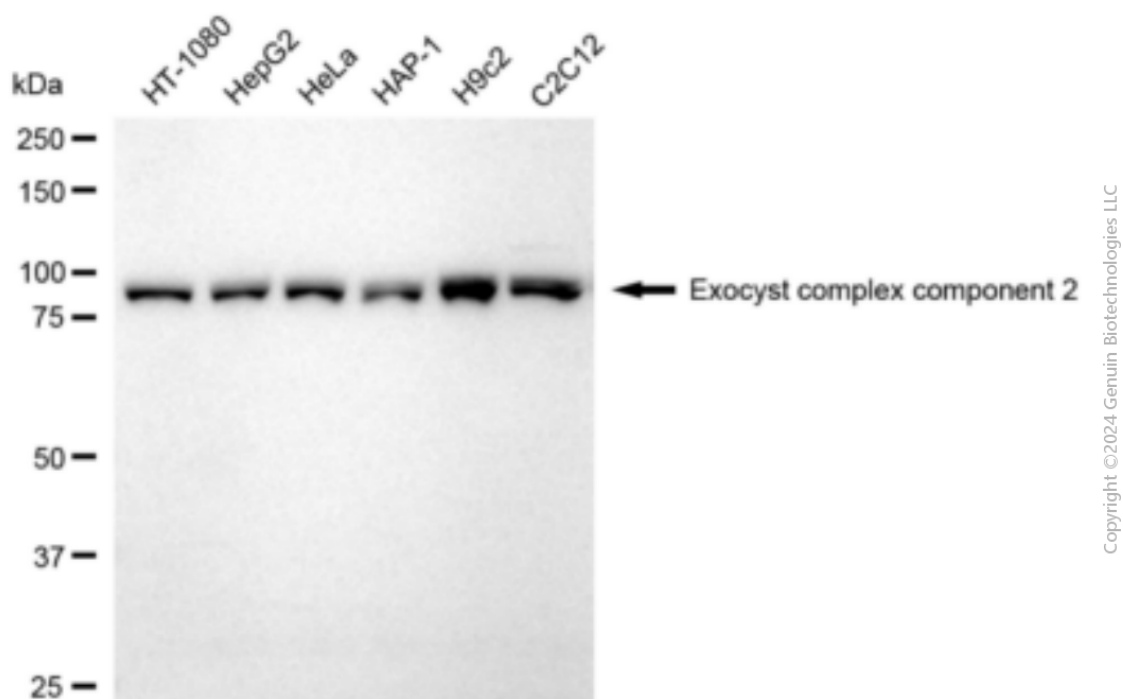
Flow cytometric analysis of Exocyst complex component 2 expression in HepG2 cells using anti-Exocyst complex component 2 antibody (Cat#3002, 1:2,000). Green, isotype control; red, Exocyst complex component 2.



Immunocytochemical staining of HepG2 cells with anti-Exocyst complex component 2 antibody (Cat#3002, 1:1,000). Nuclei were stained blue with DAPI; Exocyst complex component 2 was stained magenta with Alexa Fluor® 647. Images were taken using Leica stellaris 5. Protein abundance based on laser Intensity and smart gain: Medium. Scale bar, 20 μ m.

Anti-Exocyst Complex Component 2 Recombinant Rabbit Monoclonal Antibody

PAGE 3



Western blotting analysis using anti-Exocyst complex component 2 antibody (Cat#3002). Total cell lysates (30 µg) from various cell lines were loaded and separated by SDS-PAGE. The blot was incubated with anti-Exocyst complex component 2 antibody (Cat#3002, 1:5,000) and HRP-conjugated goat anti-rabbit secondary antibody (Cat#201, 1:20,000) respectively. Image was developed using FeQ™ ECL Substrate Kit (Cat#226).

SUPPORT

SUPPORT@GENUINBIOTECH.COM
TEL: +1-540-855-7041

ORDERS

SALES@GENUINBIOTECH.COM
FAX: +1-540-855-7041

WWW.GENUINBIOTECH.COM