

Anti-Engulfment And Cell Motility 1 Recombinant Rabbit Monoclonal Antibody



Catalog #: 3005

Aliases

ELMO1; Engulfment And Cell Motility 1; KIAA0281; ELMO-1; CED-12; CED12; Engulfment And Cell Motility Protein 1; Engulfment And Cell Motility 1 (Ced-12 Homolog, C. Elegans); Protein Ced-12 Homolog; Ced-12 Homolog 1

Background

Gene Name: ELMO1

NCBI Gene Entry: [9844](#)

UniProt Entry: [Q92556](#)

Application Information

Molecular Weight: Predicted, 84 kDa; observed, 73 kDa

Clonality: Rabbit monoclonal antibody

Clone ID: 24GB3590

Species Reactivity: Human, mouse, rat

Applications Tested: Western blotting (WB), flow cytometry (FCM)

Immunogen

A synthesized peptide derived from human ELMO1

Isotype

Rabbit IgG

Storage Buffer

Supplied in PBS (pH 7.4) containing 50% glycerol, and 0.02% sodium azide.

Storage

Store at -20 °C for one year.

Recommended Dilutions

Western Blotting (WB): 1:1,000-1:5,000

Flow Cytometry (FCM): 1:2,000

Note: This product is for research use only.

Validation Data

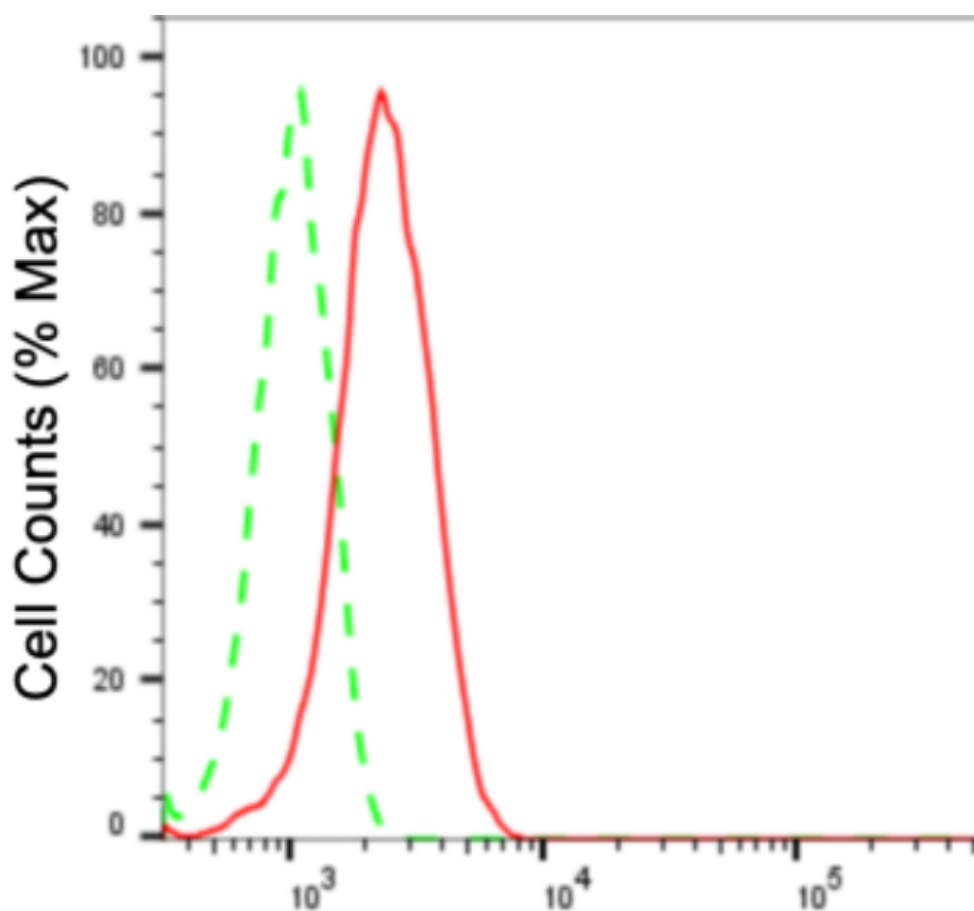
SUPPORT

SUPPORT@GENUINBIOTECH.COM
TEL: +1-540-855-7041

ORDERS

SALES@GENUINBIOTECH.COM
FAX: +1-540-855-7041

WWW.GENUINBIOTECH.COM



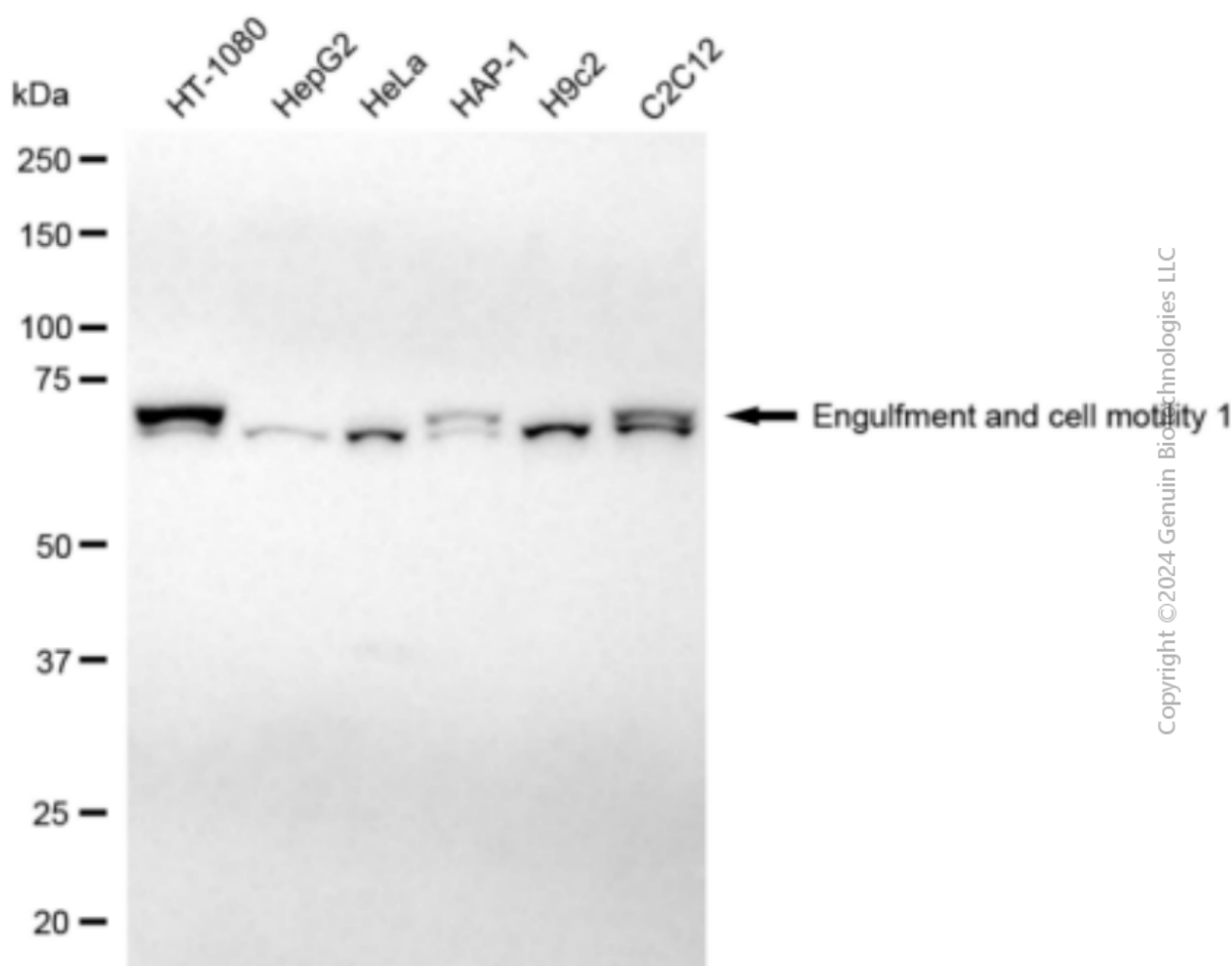
Copyright ©2024 Genuin Biotechnologies LLC

Engulfment and cell motility 1-Alexa Fluor® 647

Flow cytometric analysis of Engulfment and cell motility 1 expression in HT-1080 cells using anti-Engulfment and cell motility 1 antibody (Cat#3005, 1:2,000). Green, isotype control; red, Engulfment and cell motility 1.

Anti-Engulfment And Cell Motility 1 Recombinant Rabbit Monoclonal Antibody

PAGE 3



Western blotting analysis using anti-Engulfment and cell motility 1 antibody (Cat#3005). Total cell lysates (30 µg) from various cell lines were loaded and separated by SDS-PAGE. The blot was incubated with anti-Engulfment and cell motility 1 antibody (Cat#3005, 1:5,000) and HRP-conjugated goat anti-rabbit secondary antibody (Cat#201, 1:20,000) respectively. Image was developed using FeQ™ ECL Substrate Kit (Cat#226).

SUPPORT

SUPPORT@GENUINBIOTECH.COM
TEL: +1-540-855-7041

ORDERS

SALES@GENUINBIOTECH.COM
FAX: +1-540-855-7041

WWW.GENUINBIOTECH.COM