

Anti-Cytochrome P450 Oxidoreductase Recombinant Rabbit Monoclonal Antibody



Catalog #: 3010

Aliases

POR; Cytochrome P450 Oxidoreductase; CYPOR; P450 (Cytochrome) Oxidoreductase; NADPH--Cytochrome P450 Reductase; NADPH--Hemoprotein Reductase; EC 1.6.2.4; FLJ26468; P450R; CPR; NADPH-Dependent Cytochrome P450 Reductase

Background

Gene Name: POR

NCBI Gene Entry: [5447](#)

UniProt Entry: [P16435](#)

Application Information

Molecular Weight: Predicted, 77 kDa; observed, 70 kDa

Clonality: Rabbit monoclonal antibody

Clone ID: 24GB3615

Species Reactivity: Human, mouse, rat

Applications Tested: Western blotting (WB), flow cytometry (FCM), immunocytochemistry (IC)

Immunogen

A synthesized peptide derived from human Cytochrome P450 Reductase

Isotype

Rabbit IgG

Storage Buffer

Supplied in PBS (pH 7.4) containing 50% glycerol, and 0.02% sodium azide.

Storage

Store at -20 °C for one year.

Recommended Dilutions

Western Blotting (WB): 1:1,000-1:5,000

Flow Cytometry (FCM): 1:2,000

Immunocytochemistry (IC): 1:100-1:1,000

Note: This product is for research use only.

SUPPORT

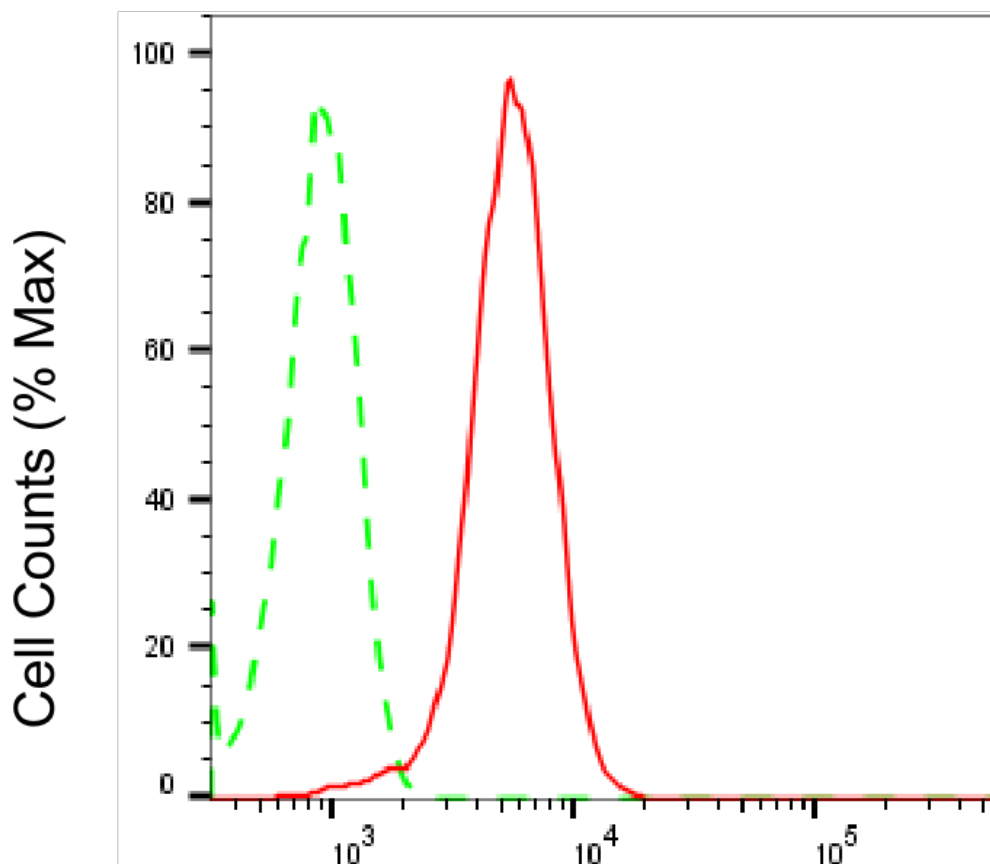
SUPPORT@GENUINBIOTECH.COM
TEL: +1-540-855-7041

ORDERS

SALES@GENUINBIOTECH.COM
FAX: +1-540-855-7041

WWW.GENUINBIOTECH.COM

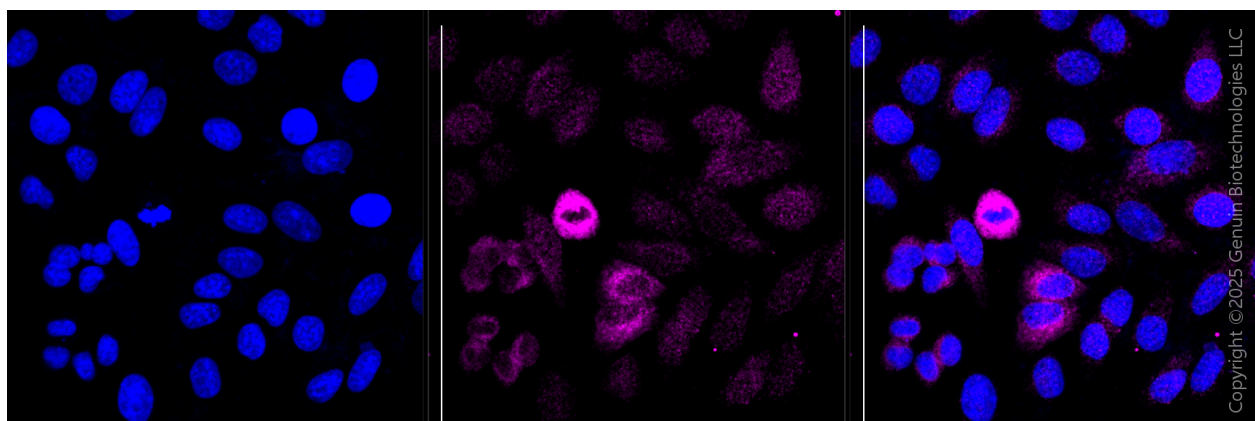
Validation Data



Copyright ©2025 Genuin Biotechnologies LLC

Cytochrome p450 oxidoreductase-Alexa Fluor® 647

Flow cytometric analysis of Cytochrome p450 oxidoreductase expression in HepG2 cells using anti-Cytochrome p450 oxidoreductase antibody (Cat#3010, 1:2,000). Green, isotype control; red, Cytochrome p450 oxidoreductase.



Copyright ©2025 Genuin Biotechnologies LLC

Immunocytochemical staining of HepG2 cells with Cytochrome p450 oxidoreductase

SUPPORT

SUPPORT@GENUINBIOTECH.COM
TEL: +1-540-855-7041

ORDERS

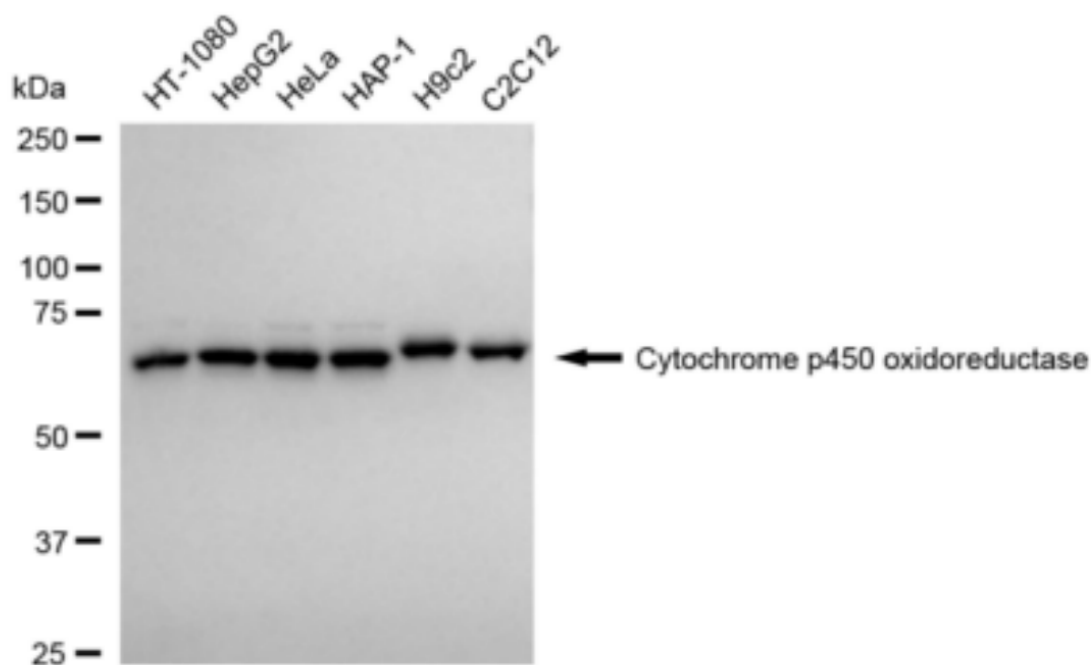
SALES@GENUINBIOTECH.COM
FAX: +1-540-855-7041

WWW.GENUINBIOTECH.COM

Anti-Cytochrome P450 Oxidoreductase Recombinant Rabbit Monoclonal Antibody

PAGE 3

antibody (Cat#3010, 1:1,000). Nuclei were stained blue with DAPI; Cytochrome p450 oxidoreductase was stained magenta with Alexa Fluor® 647. Images were taken using Leica stellaris 5. Protein abundance based on laser Intensity and smart gain: Medium. Scale bar, 20 μ m.



Copyright ©2024 Genuin Biotechnologies LLC

Western blotting analysis using anti-cytochrome p450 oxidoreductase antibody (Cat#3010). Total cell lysates (30 μ g) from various cell lines were loaded and separated by SDS-PAGE. The blot was incubated with anti-cytochrome p450 oxidoreductase antibody (Cat#3010, 1:5,000) and HRP-conjugated goat anti-rabbit secondary antibody (Cat#201, 1:20,000) respectively. Image was developed using FeQ™ ECL Substrate Kit (Cat#226).

SUPPORT

SUPPORT@GENUINBIOTECH.COM
TEL: +1-540-855-7041

ORDERS

SALES@GENUINBIOTECH.COM
FAX: +1-540-855-7041

WWW.GENUINBIOTECH.COM