

# Anti-Mitotic Arrest Deficient 1 Like 1 Recombinant Rabbit Monoclonal Antibody



**Catalog #: 3011**

## Aliases

MAD1L1; Mitotic Arrest Deficient 1 Like 1; TXBP181; MAD1; HsMAD1; TP53I9; PIG9; Mitotic Spindle Assembly Checkpoint Protein MAD1; Mitotic Arrest Deficient 1-Like Protein 1; Mitotic Checkpoint MAD1 Protein Homolog; MAD1 Mitotic Arrest Deficient Like 1; Tax-Binding Protein 181; MAD1-Like Protein 1; MAD1 (Mitotic Arrest Deficient, Yeast, Homolog)-Like 1; Mitotic-Arrest Deficient 1, Yeast, Homolog-Like 1; MAD1 Mitotic Arrest Deficient-Like 1 (Yeast); Tumor Protein P53 Inducible Protein 9; HMAD1; MVA7

## Background

Gene Name: MAD1L1

NCBI Gene Entry: [8379](#)

UniProt Entry: [Q9Y6D9](#)

## Application Information

Molecular Weight: Predicted, 83 kDa; observed, 75 kDa

Clonality: Rabbit monoclonal antibody

Clone ID: 24GB3620

Species Reactivity: Human, mouse, rat

Applications Tested: Western blotting (WB), flow cytometry (FCM), immunocytochemistry (IC)

## Immunogen

A synthesized peptide derived from human MAD1

## Isotype

Rabbit IgG

## Storage Buffer

Supplied in PBS (pH 7.4) containing 50% glycerol, and 0.02% sodium azide.

## Storage

Store at -20 °C for one year.

## Recommended Dilutions

Western Blotting (WB): 1:1,000-1:5,000

Flow Cytometry (FCM): 1:2,000

Immunocytochemistry (IC): 1:100-1:1,000

---

### SUPPORT

SUPPORT@GENUINBIOTECH.COM  
TEL: +1-540-855-7041

### ORDERS

SALES@GENUINBIOTECH.COM  
FAX: +1-540-855-7041

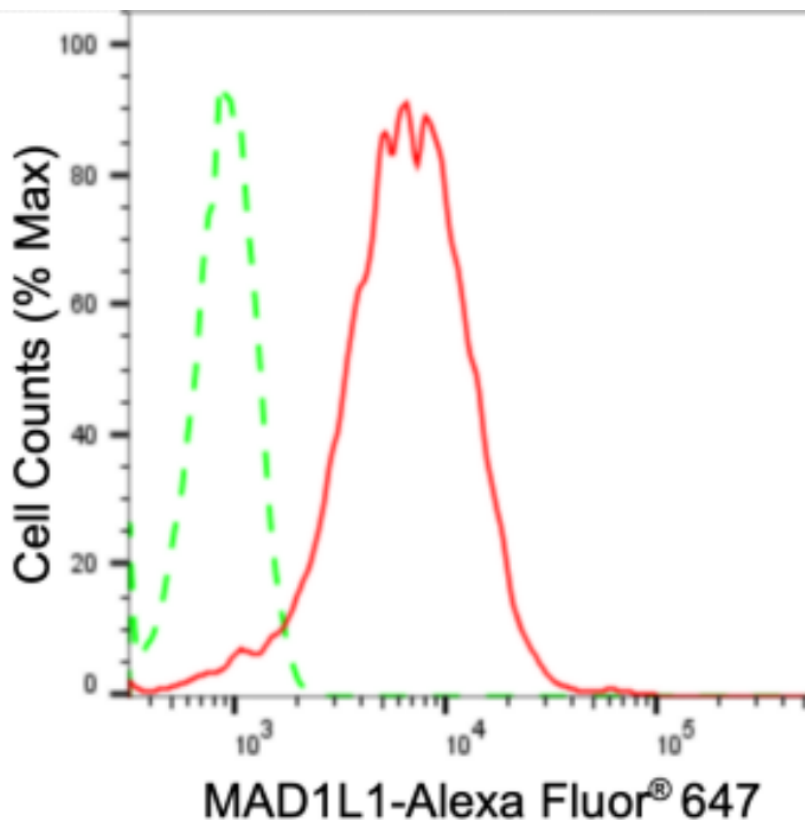
[WWW.GENUINBIOTECH.COM](http://WWW.GENUINBIOTECH.COM)

# Anti-Mitotic Arrest Deficient 1 Like 1 Recombinant Rabbit Monoclonal Antibody

PAGE 2

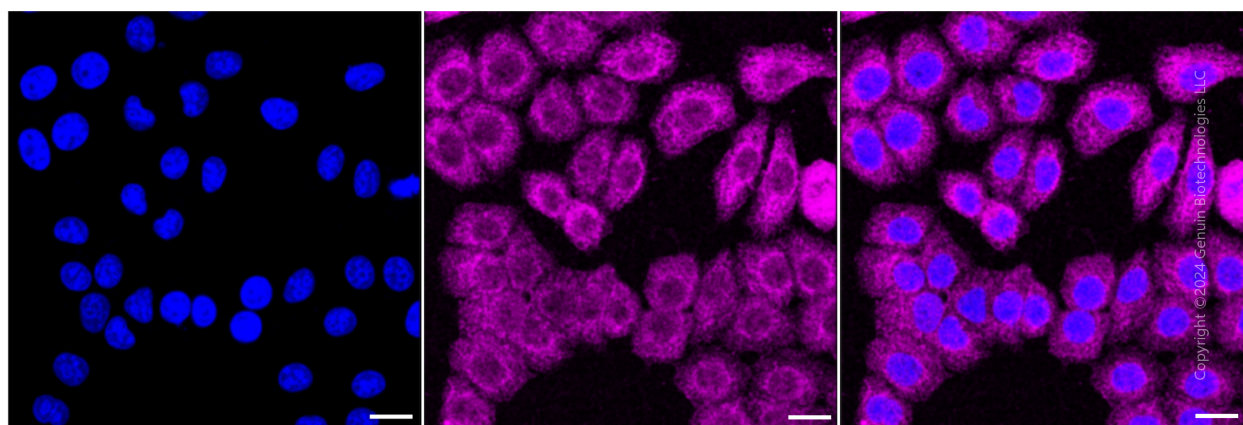
**Note:** This product is for research use only.

## Validation Data



Copyright ©2024 Genuin Biotechnologies LLC

Flow cytometric analysis of MAD1L1 expression in HepG2 cells using anti-MAD1L1 antibody (Cat#3011, 1:2,000). Green, isotype control; red, MAD1L1.



Immunocytochemical staining of HepG2 cells with anti-MAD1L1 antibody (Cat#3011, 1:1,000) . Nuclei were stained blue with DAPI; MAD1L1 was stained magenta with Alexa Fluor® 647. Images were taken using leica stellaris 5. Protein abundance based on laser intensity and smart gain: Medium. Scale bar: 20  $\mu$ m.

### SUPPORT

SUPPORT@GENUINBIOTECH.COM  
TEL: +1-540-855-7041

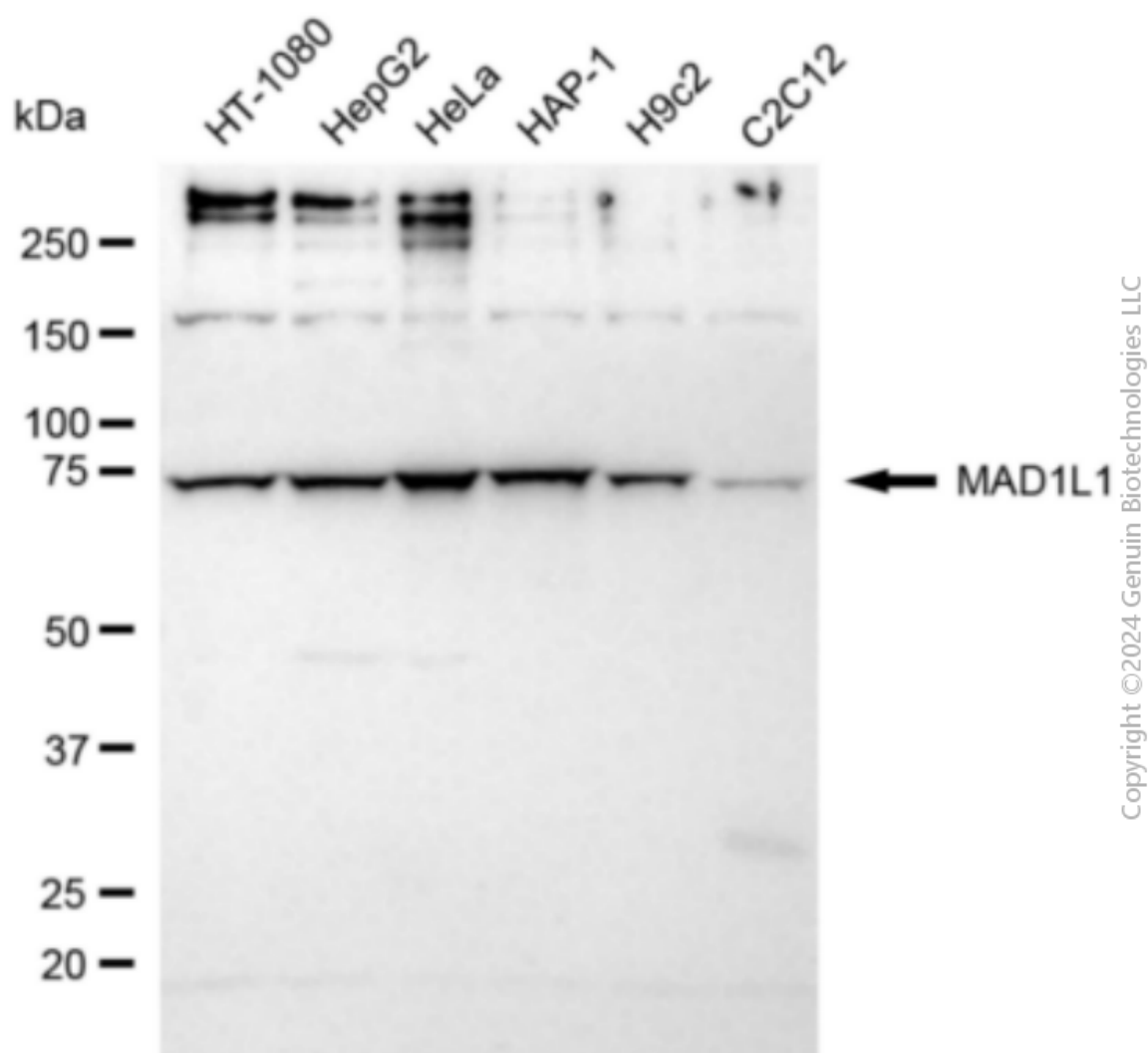
### ORDERS

SALES@GENUINBIOTECH.COM  
FAX: +1-540-855-7041

WWW.GENUINBIOTECH.COM

## Anti-Mitotic Arrest Deficient 1 Like 1 Recombinant Rabbit Monoclonal Antibody

PAGE 3



Western blotting analysis using anti-MAD1L1 antibody (Cat#3011). Total cell lysates (30 µg) from various cell lines were loaded and separated by SDS-PAGE. The blot was incubated with anti-MAD1L1 antibody (Cat#3011, 1:5,000) and HRP-conjugated goat anti-rabbit secondary antibody (Cat#201, 1:20,000) respectively. Image was developed using FeQ™ ECL Substrate Kit (Cat#226).

### SUPPORT

SUPPORT@GENUINBIOTECH.COM  
TEL: +1-540-855-7041

### ORDERS

SALES@GENUINBIOTECH.COM  
FAX: +1-540-855-7041

[WWW.GENUINBIOTECH.COM](http://WWW.GENUINBIOTECH.COM)