

Anti-NDUFB8 Recombinant Rabbit Monoclonal Antibody



Catalog #: 3012

Aliases

NDUFB8; NADH:Ubiquinone Oxidoreductase Subunit B8; CI-ASHI; ASHI; NADH Dehydrogenase [Ubiquinone] 1 Beta Subcomplex Subunit 8, Mitochondrial; NADH Dehydrogenase (Ubiquinone) 1 Beta Subcomplex, 8, 19kDa; Complex I ASHI Subunit; Complex I-ASHI; NADH Dehydrogenase (Ubiquinone) 1 Beta Subcomplex, 8 (19kD, ASHI); NADH:Ubiquinone Oxidoreductase ASHI Subunit; NADH-Ubiquinone Oxidoreductase ASHI Subunit; MC1DN32

Background

Gene Name: NDUFB8

NCBI Gene Entry: [4714](#)

UniProt Entry: [O95169](#)

Application Information

Molecular Weight: Predicted, 22 kDa; observed, 19 kDa

Clonality: Rabbit monoclonal antibody

Clone ID: 24GB3625

Species Reactivity: Human, mouse, rat

Applications Tested: Western blotting (WB), flow cytometry (FCM), immunocytochemistry (IC)

Immunogen

A synthesized peptide derived from human NDUFB8

Isotype

Rabbit IgG

Storage Buffer

Supplied in PBS (pH 7.4) containing 50% glycerol, and 0.02% sodium azide.

Storage

Store at -20 °C for one year.

Recommended Dilutions

Western Blotting (WB): 1:1,000-1:5,000

Flow Cytometry (FCM): 1:2,000

Immunocytochemistry (IC): 1:100-1:1,000

SUPPORT

SUPPORT@GENUINBIOTECH.COM
TEL: +1-540-855-7041

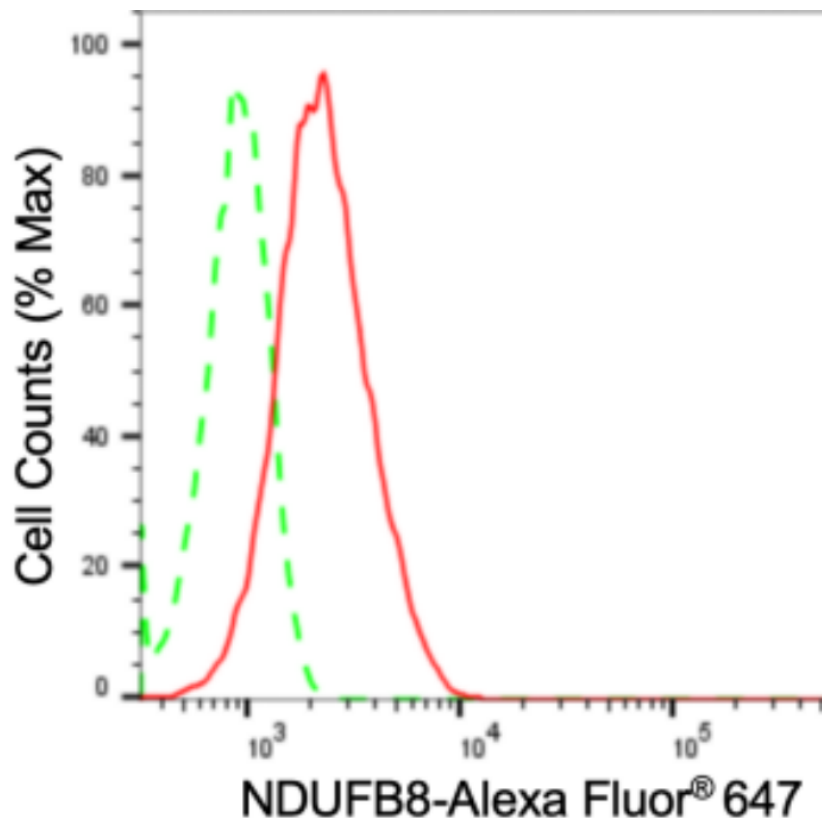
ORDERS

SALES@GENUINBIOTECH.COM
FAX: +1-540-855-7041

WWW.GENUINBIOTECH.COM

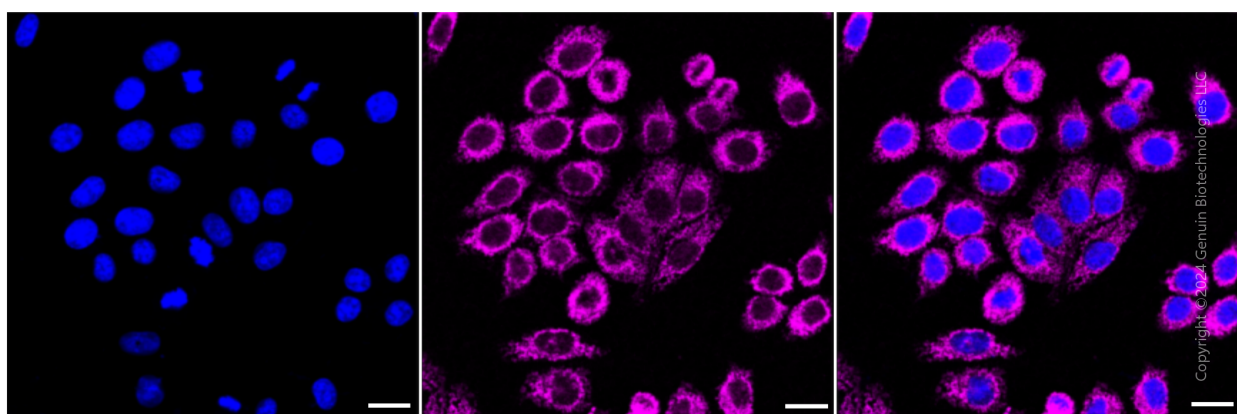
Note: This product is for research use only.

Validation Data



Copyright ©2024 Genuin Biotechnologies LLC

Flow cytometric analysis of NDUFB8 expression in HepG2 cells using anti-NDUFB8 antibody (Cat#3012, 1:2,000). Green, isotype control; red, NDUFB8.



Copyright ©2024 Genuin Biotechnologies LLC

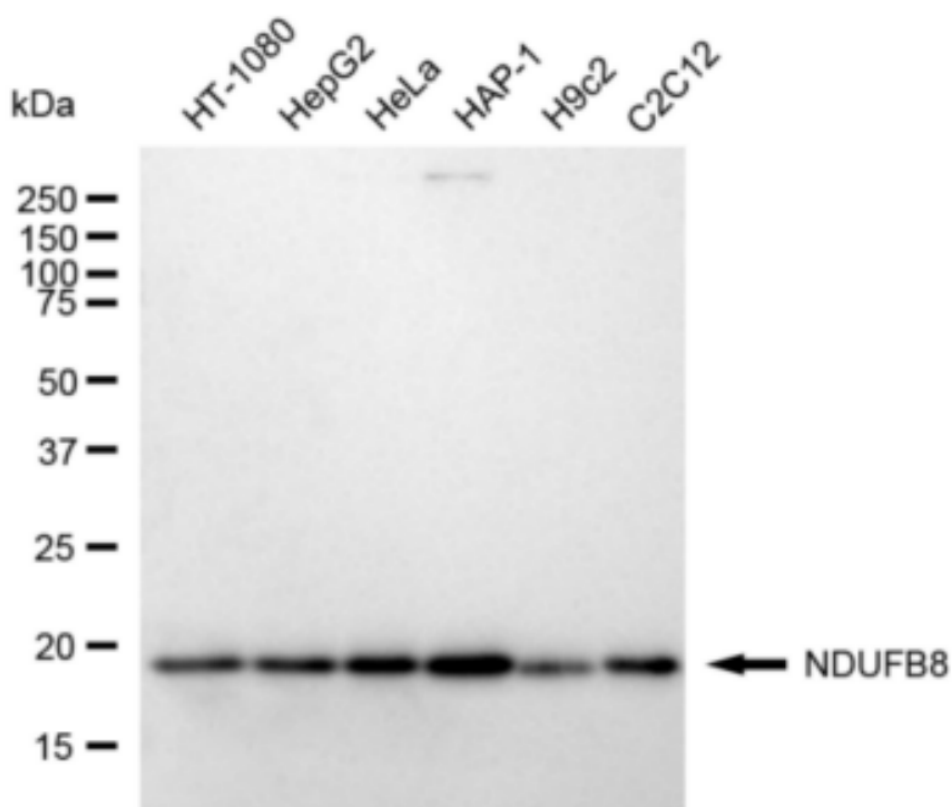
SUPPORT

SUPPORT@GENUINBIOTECH.COM
TEL: +1-540-855-7041

ORDERS

SALES@GENUINBIOTECH.COM
FAX: +1-540-855-7041

WWW.GENUINBIOTECH.COM



Copyright ©2024 Genuin Biotechnologies LLC

Western blotting analysis using anti-NDUFB8 antibody (Cat#3012). Total cell lysates (30 μ g) from various cell lines were loaded and separated by SDS-PAGE. The blot was incubated with anti-NDUFB8 antibody (Cat#3012, 1:5,000) and HRP-conjugated goat anti-rabbit secondary antibody (Cat#201, 1:20,000) respectively. Image was developed using FeQ™ ECL Substrate Kit (Cat#226).