

# Anti-ILF3 Recombinant Rabbit Monoclonal Antibody



**Catalog #: 3018**

## Aliases

ILF3; Interleukin Enhancer Binding Factor 3; MPHOSPH4; DRBP76; NF90; MPP4; Nuclear Factor Of Activated T-Cells 90 KDa; Translational Control Protein 80; M-Phase Phosphoprotein 4; NFAR110; NF90ctv; MPP4110; NFAR-1; NFAR-2; TCP110; NFAR90; NF110b; NF110; NF90a; NF90c; M Phase Phosphoprotein 4, Nuclear Factor Associated With DS RNA; Interleukin Enhancer Binding Factor 3, 90kDa; Nuclear Factor Of Activated T-Cells 110 KDa; Interleukin Enhancer Binding Factor 3, 90kD; Double-Stranded RNA-Binding Protein, 76 KD; Interleukin Enhancer-Binding Factor 3; Nuclear Factor Associated With DsRNA; DsRNA Binding Protein NFAR-2/MPP4; NF-AT-90; TCP80; DRBF; NFAR; Nuclear Factor Of Activated T-Cells, 90 KD; Double-Stranded RNA-Binding Protein 76; NF90b; NFAR2; CBTF; MMP4

## Background

Gene Name: ILF3

NCBI Gene Entry: [3609](#)

UniProt Entry: [Q12906](#)

## Application Information

Molecular Weight: Predicted, 95 kDa; observed, 110 kDa

Clonality: Rabbit monoclonal antibody

Clone ID: 24GB3655

Species Reactivity: Human, mouse, rat

Applications Tested: Western blotting (WB), flow cytometry (FCM), immunocytochemistry (IC)

## Immunogen

A synthesized peptide derived from human ILF3

## Isotype

Rabbit IgG

## Storage Buffer

Supplied in PBS (pH 7.4) containing 50% glycerol, and 0.02% sodium azide.

## Storage

Store at -20 °C for one year.

## Recommended Dilutions

---

### SUPPORT

SUPPORT@GENUINBIOTECH.COM  
TEL: +1-540-855-7041

### ORDERS

SALES@GENUINBIOTECH.COM  
FAX: +1-540-855-7041

[WWW.GENUINBIOTECH.COM](http://WWW.GENUINBIOTECH.COM)

# Anti-ILF3 Recombinant Rabbit Monoclonal Antibody

PAGE 2

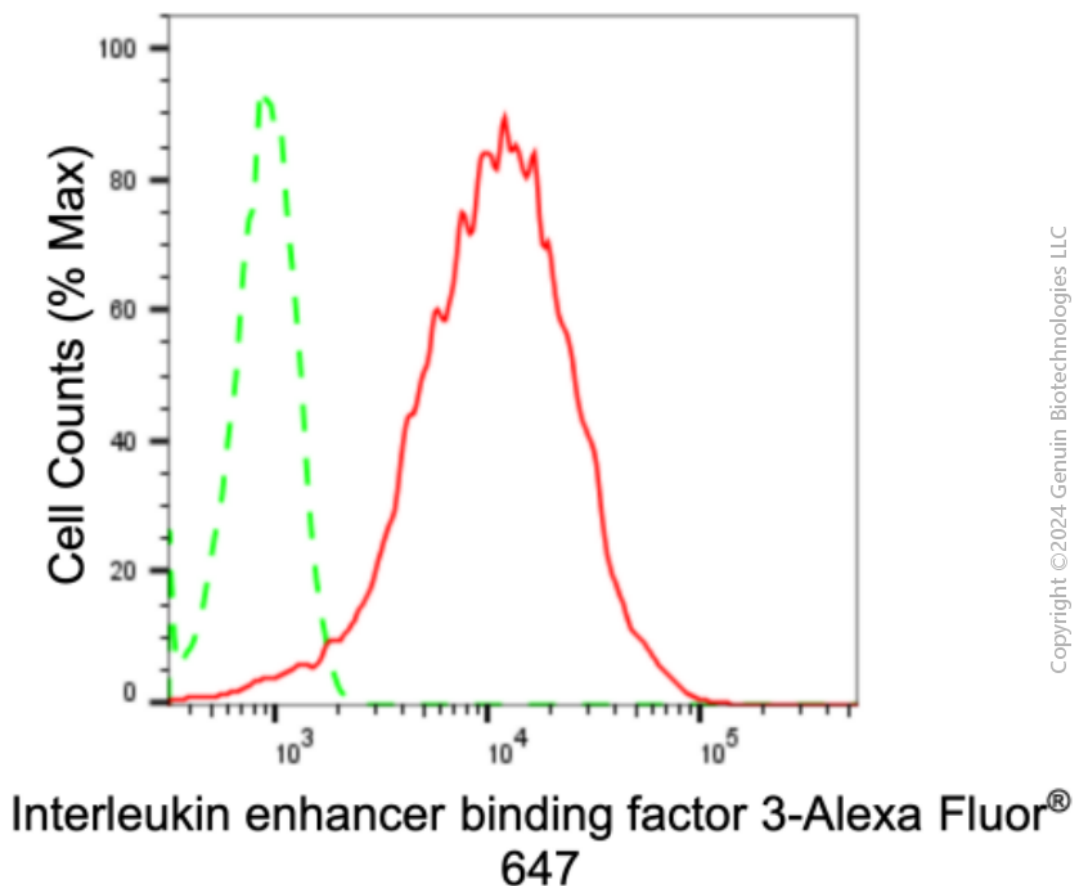
Western Blotting (WB): 1:1,000-1:5,000

Flow Cytometry (FCM): 1:2,000

Immunocytochemistry (IC): 1:100-1:1,000

**Note:** This product is for research use only.

## Validation Data



Flow cytometric analysis of Interleukin enhancer binding factor 3 expression in HepG2 cells using anti-Interleukin enhancer binding factor 3 antibody (Cat#3018, 1:2,000). Green, isotype control; red, Interleukin enhancer binding factor 3.

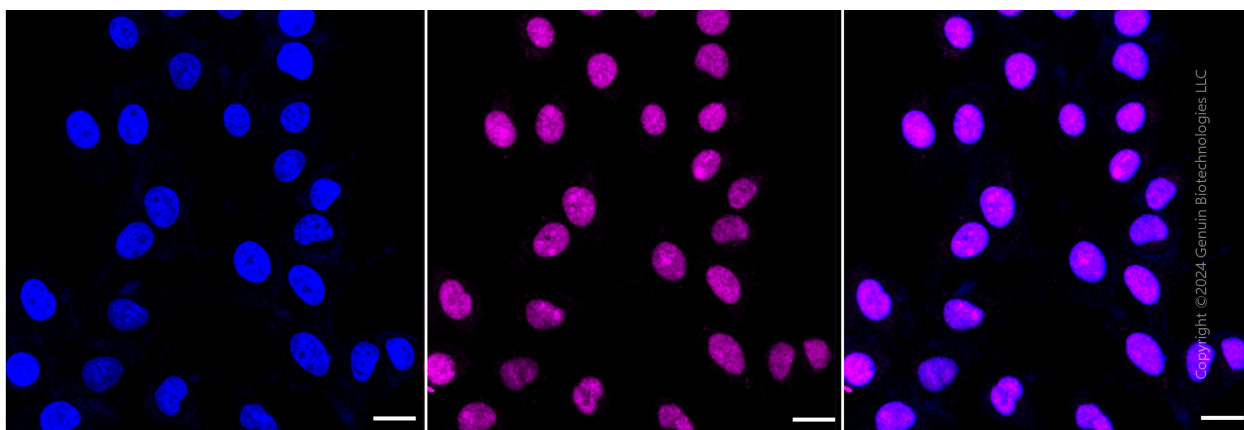
### SUPPORT

SUPPORT@GENUINBIOTECH.COM  
TEL: +1-540-855-7041

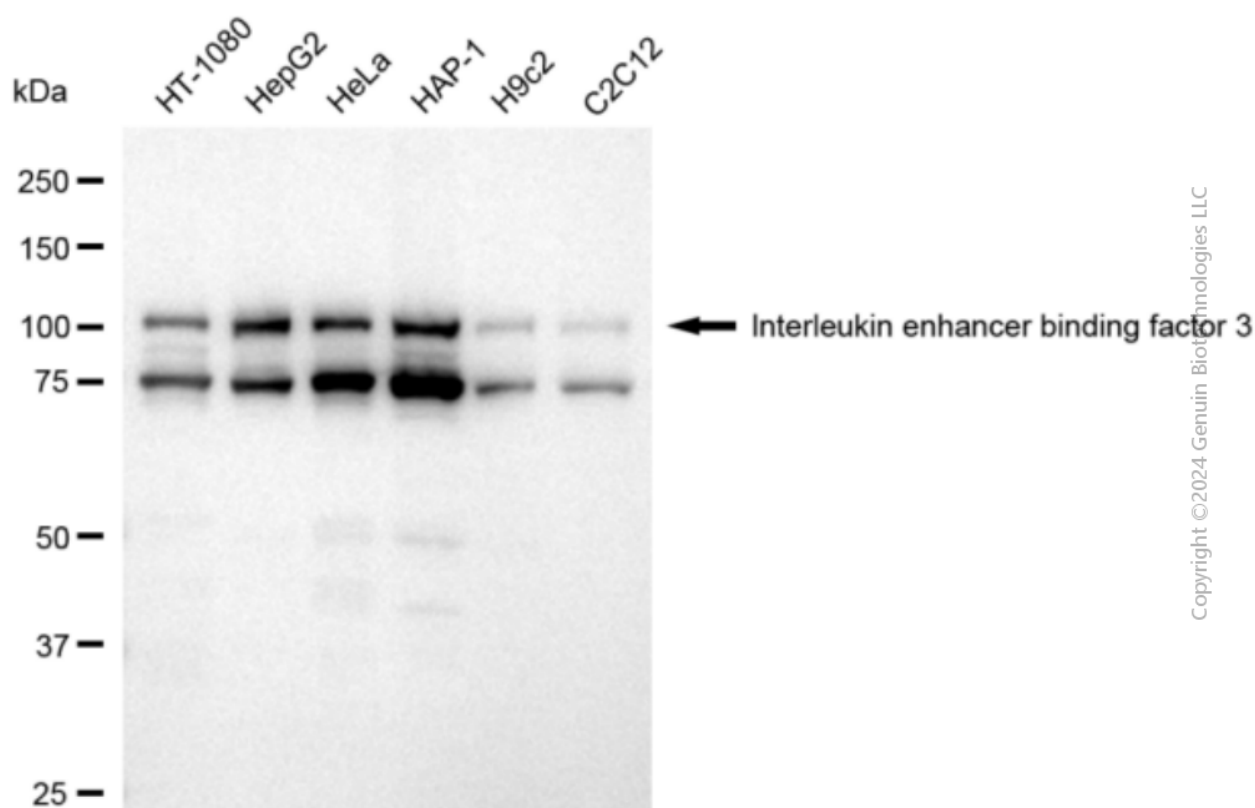
### ORDERS

SALES@GENUINBIOTECH.COM  
FAX: +1-540-855-7041

WWW.GENUINBIOTECH.COM



Immunocytochemical staining of HepG2 cells with anti-interleukin enhancer binding factor 3 antibody (Cat#3018, 1:1,000). Nuclei were stained blue with DAPI; Interleukin enhancer binding factor 3 was stained magenta with Alexa Fluor® 647. Images were taken using Leica stellaris 5. Protein abundance based on laser Intensity and smart gain: High. Scale bar: 20  $\mu$ m.



Western blotting analysis using anti-Interleukin enhancer binding factor 3 antibody (Cat#3018). Total cell lysates (30  $\mu$ g) from various cell lines were loaded and separated by SDS-PAGE. The blot was incubated with anti-Interleukin enhancer binding factor 3 antibody (Cat#3018, 1:5,000) and HRP-conjugated goat anti-rabbit secondary antibody (Cat#201, 1:20,000) respectively. Image was developed using FeQ™ ECL Substrate Kit (Cat#226).