

Anti-Lipin 1 Recombinant Rabbit Monoclonal Antibody



Catalog #: 3020

Aliases

LPIN1; Lipin 1; Phosphatidate Phosphatase LPIN1; KIAA0188; EC 3.1.3.18; EC 3.1.3.4; EC 5.4.2.7; Lipin-1; PAP1

Background

Gene Name: LPIN1

NCBI Gene Entry: [13345](#)

UniProt Entry: [Q14693](#)

Application Information

Molecular Weight: Predicted, 99 kDa; observed, 130 kDa

Clonality: Rabbit monoclonal antibody

Clone ID: 24GB3665

Species Reactivity: Human, mouse, rat

Applications Tested: Western blotting (WB), flow cytometry (FCM), immunocytochemistry (IC)

Immunogen

A synthesized peptide derived from human Lipin 1

Isotype

Rabbit IgG

Storage Buffer

Supplied in PBS (pH 7.4) containing 50% glycerol, and 0.02% sodium azide.

Storage

Store at -20 °C for one year.

Recommended Dilutions

Western Blotting (WB): 1:1,000-1:5,000

Flow Cytometry (FCM): 1:2,000

Immunocytochemistry (IC): 1:100-1:1,000

Note: This product is for research use only.

Validation Data

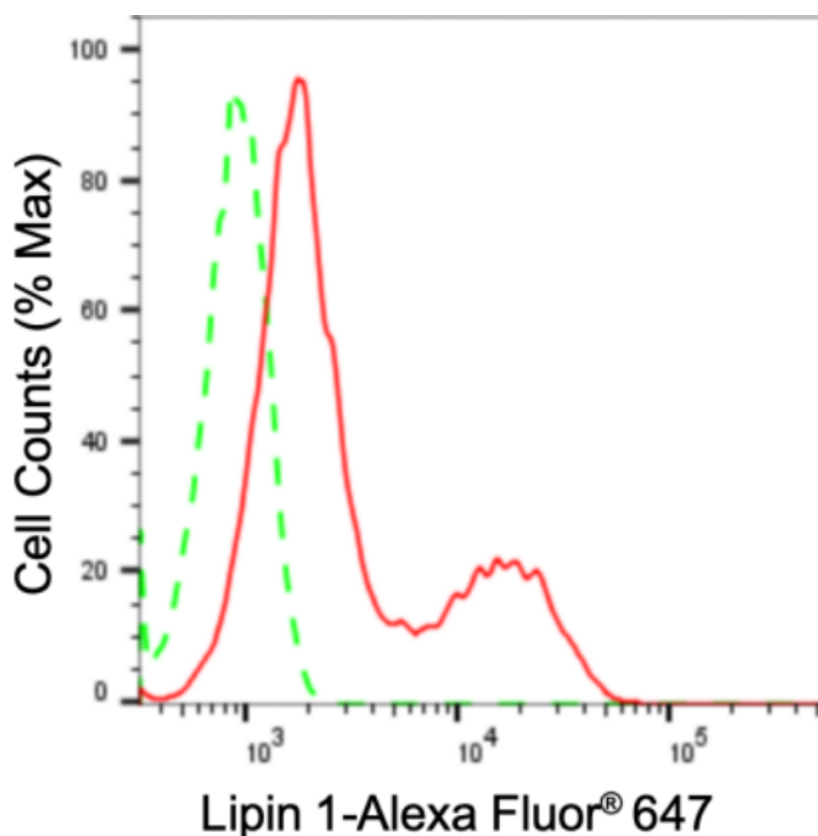
SUPPORT

SUPPORT@GENUINBIOTECH.COM
TEL: +1-540-855-7041

ORDERS

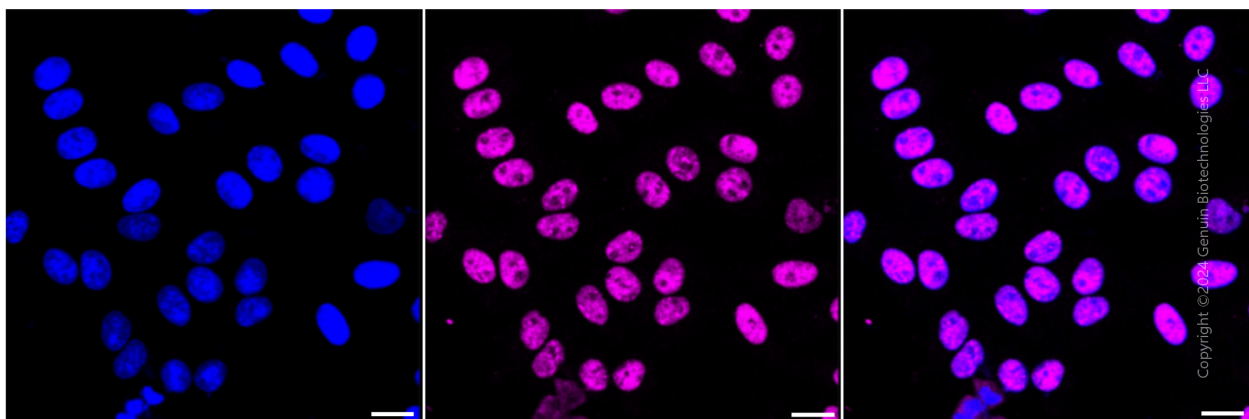
SALES@GENUINBIOTECH.COM
FAX: +1-540-855-7041

WWW.GENUINBIOTECH.COM



Copyright ©2024 Genuin Biotechnologies LLC

Flow cytometric analysis of Lipin 1 expression in HepG2 cells using anti-Lipin 1 antibody (Cat#3020, 1:2,000). Green, isotype control; red, Lipin 1.



Copyright ©2024 Genuin Biotechnologies LLC

Immunocytochemical staining of HepG2 cells with anti-Lipin 1 antibody (Cat#3020, 1:1,000). Nuclei were stained blue with DAPI; Lipin 1 was stained magenta with Alexa Fluor® 647. Images were taken using leica stellaris 5. Protein abundance based on laser intensity and smart gain: Medium. Scale bar: 20 µm.

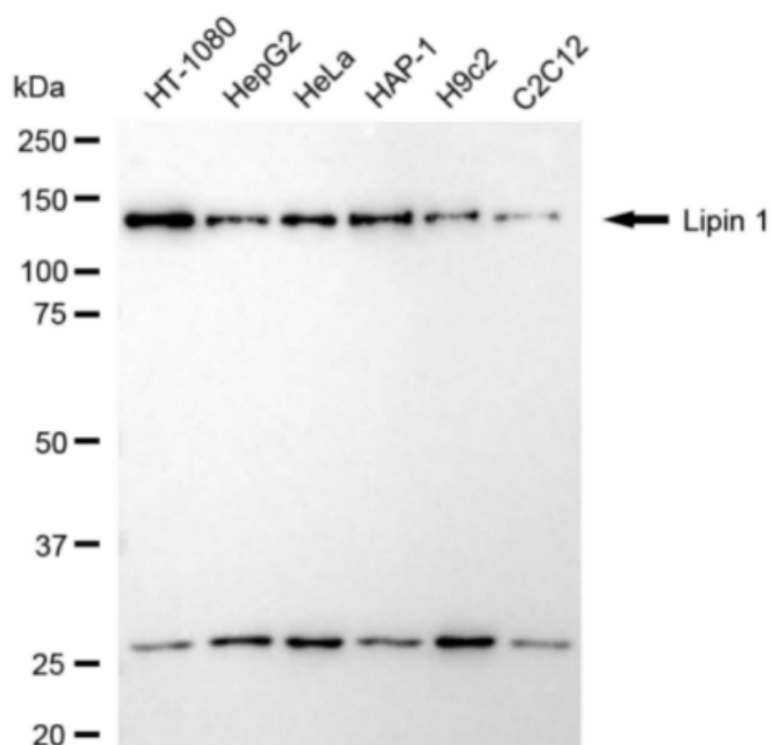
SUPPORT

SUPPORT@GENUINBIOTECH.COM
TEL: +1-540-855-7041

ORDERS

SALES@GENUINBIOTECH.COM
FAX: +1-540-855-7041

WWW.GENUINBIOTECH.COM



Copyright ©2024 Genuin Biotechnologies LLC

Western blotting analysis using anti-Lipin 1 antibody (Cat#3020). Total cell lysates (30 µg) from various cell lines were loaded and separated by SDS-PAGE. The blot was incubated with anti-Lipin 1 antibody (Cat#3020, 1:5,000) and HRP-conjugated goat anti-rabbit secondary antibody (Cat#201, 1:20,000) respectively. Image was developed using FeQ™ ECL Substrate Kit (Cat#226).