

# Anti-Activin A Receptor Type 1B Recombinant Rabbit Monoclonal Antibody



**Catalog #: 3022**

## Aliases

ACVR1B; Activin A Receptor Type 1B; ALK4; SKR2; ACVRLK4; ActRIB; Serine/Threonine-Protein Kinase Receptor R2; Activin Receptor-Like Kinase 4; Activin A Receptor, Type IB; Activin Receptor Type-1B; EC 2.7.11.30; Activin A Receptor, Type II-Like Kinase 4; Activin Receptor Type IB; EC 2.7.11; ACTR-IB; ALK-4

## Background

Gene Name: ACVR1B

NCBI Gene Entry: [91](#)

UniProt Entry: [P36896](#)

## Application Information

Molecular Weight: Predicted, 57 kDa; observed, 52 kDa

Clonality: Rabbit monoclonal antibody

Clone ID: 24GB3675

Species Reactivity: Human, mouse, rat

Applications Tested: Western blotting (WB), flow cytometry (FCM), immunocytochemistry (IC)

## Immunogen

A synthesized peptide derived from human ACVR1B

## Isotype

Rabbit IgG

## Storage Buffer

Supplied in PBS (pH 7.4) containing 50% glycerol, and 0.02% sodium azide.

## Storage

Store at -20 °C for one year.

## Recommended Dilutions

Western Blotting (WB): 1:1,000-1:5,000

Flow Cytometry (FCM): 1:2,000

Immunocytochemistry (IC): 1:100-1:1,000

---

### SUPPORT

SUPPORT@GENUINBIOTECH.COM  
TEL: +1-540-855-7041

### ORDERS

SALES@GENUINBIOTECH.COM  
FAX: +1-540-855-7041

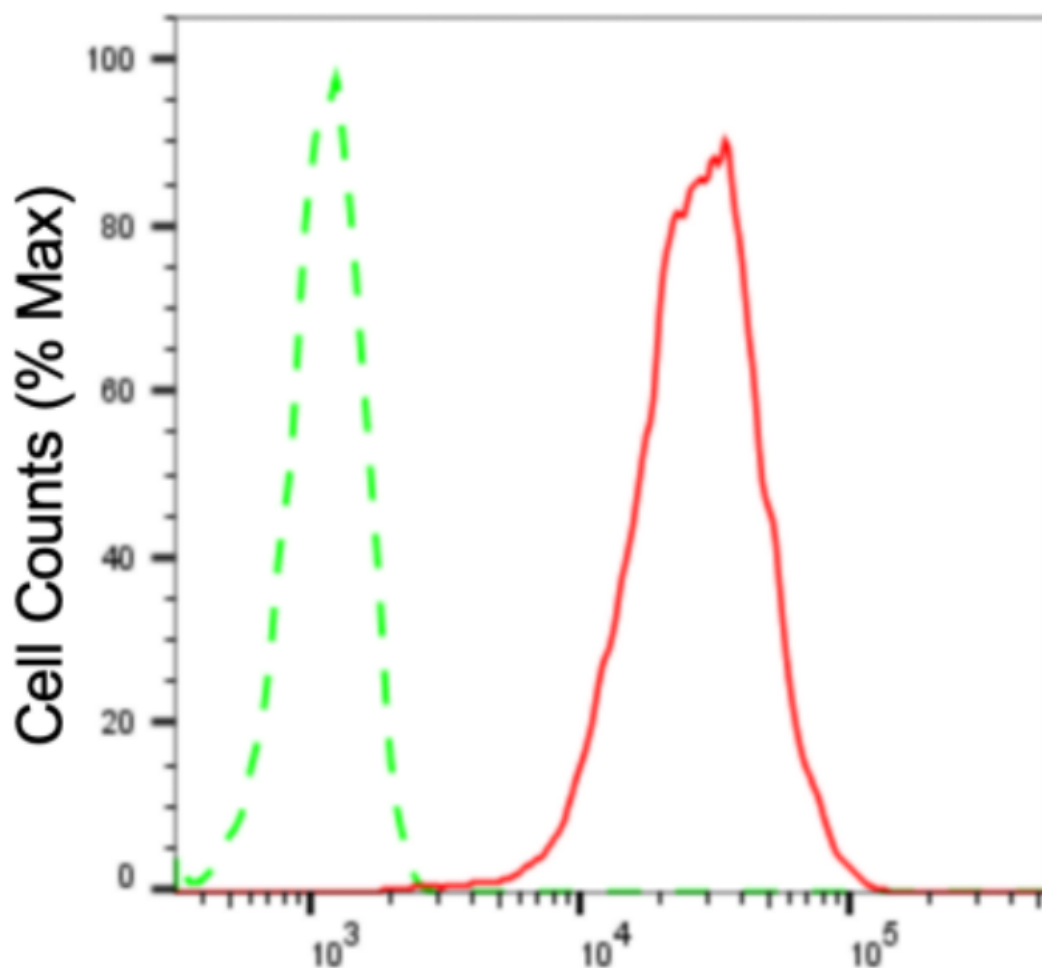
[WWW.GENUINBIOTECH.COM](http://WWW.GENUINBIOTECH.COM)

# Anti-Activin A Receptor Type 1B Recombinant Rabbit Monoclonal Antibody

PAGE 2

**Note:** This product is for research use only.

## Validation Data



Copyright ©2024 Genuin Biotechnologies LLC

## Activin A receptor type 1B-Alexa Fluor® 647

Flow cytometric analysis of Activin A receptor type 1B expression in HT-1080 cells using anti-Activin A receptor type 1B antibody (Cat#3022, 1:2,000). Green, isotype control; red, Activin A receptor type 1B.

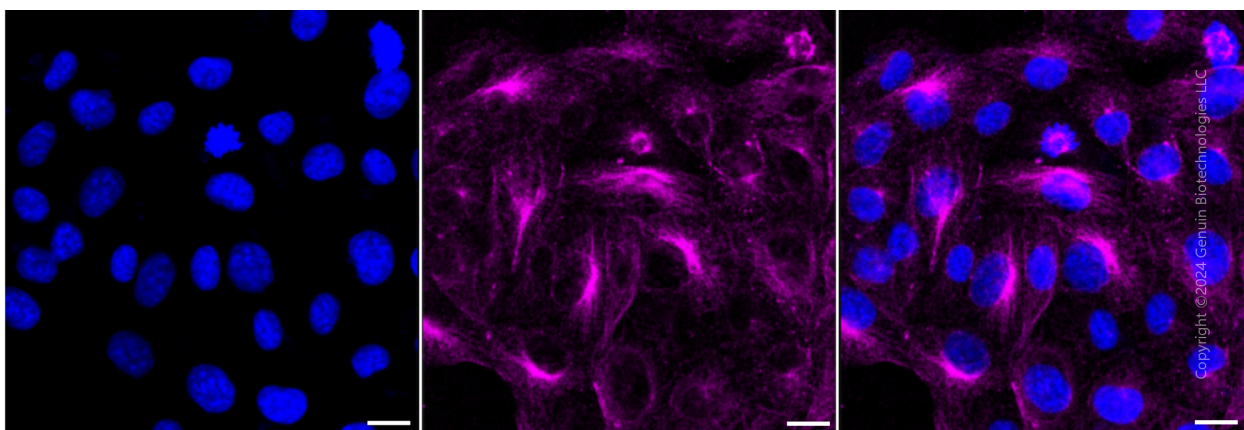
### SUPPORT

SUPPORT@GENUINBIOTECH.COM  
TEL: +1-540-855-7041

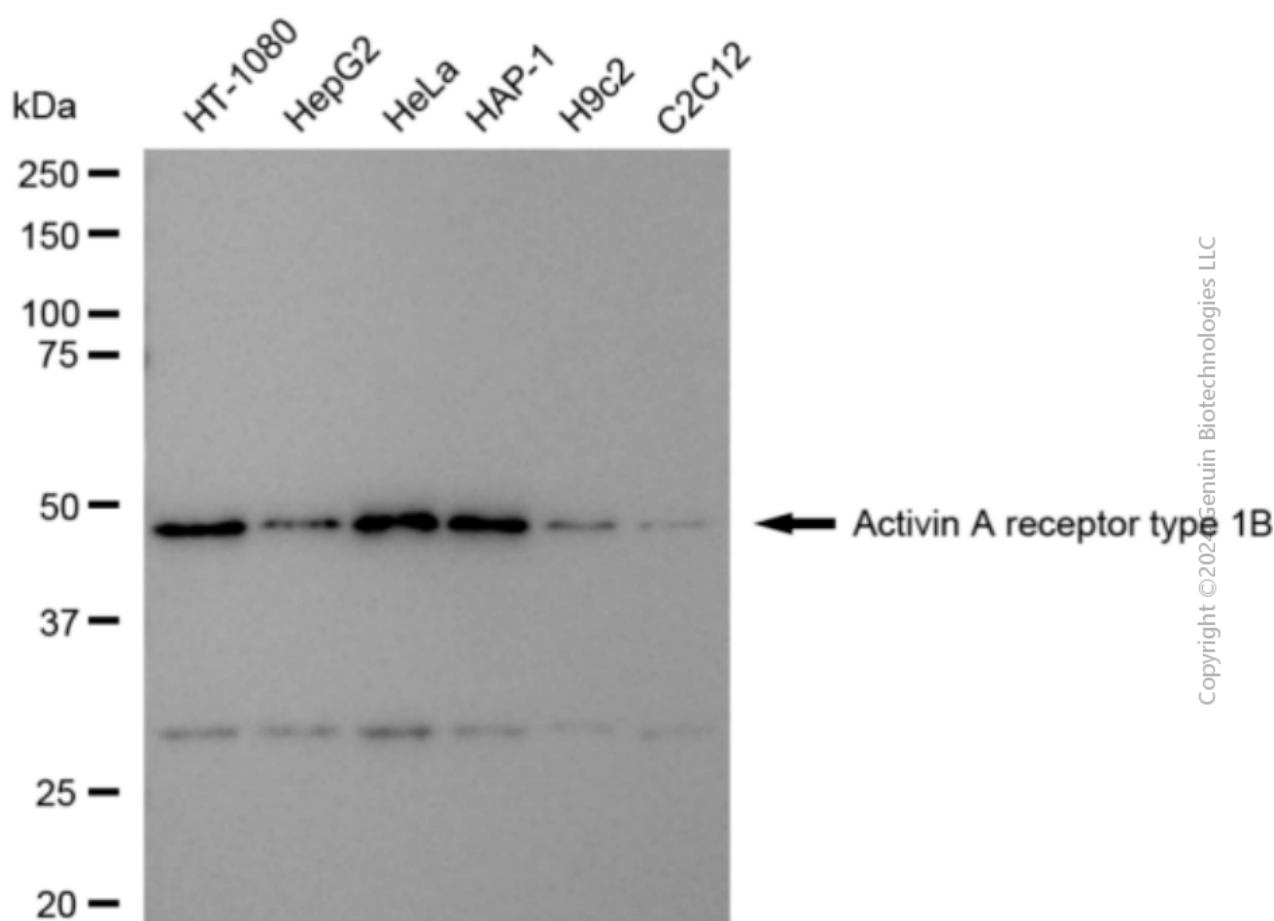
### ORDERS

SALES@GENUINBIOTECH.COM  
FAX: +1-540-855-7041

WWW.GENUINBIOTECH.COM



Immunocytochemical staining of HT-1080 cells with anti-Activin A receptor type 1B antibody (Cat#3022, 1:1,000). Nuclei were stained blue with DAPI; Activin A receptor type 1B was stained magenta with Alexa Fluor® 647. Images were taken using leica stellaris 5. Protein abundance based on laser intensity and smart gain: Medium. Scale bar: 20  $\mu$ m.



Western blotting analysis using anti-Activin A receptor type 1B antibody (Cat#3022). Total cell lysates (30  $\mu$ g) from various cell lines were loaded and separated by SDS-PAGE. The blot was incubated with anti-Activin A receptor type 1B antibody (Cat#3022, 1:5,000) and HRP-conjugated goat anti-rabbit secondary antibody (Cat#201, 1:20,000) respectively. Image was developed using

# **Anti-Activin A Receptor Type 1B Recombinant Rabbit Monoclonal Antibody**

PAGE 4

FeQ™ ECL Substrate Kit (Cat#226).

---

## **SUPPORT**

SUPPORT@GENUINBIOTECH.COM  
TEL: +1-540-855-7041

## **ORDERS**

SALES@GENUINBIOTECH.COM  
FAX: +1-540-855-7041

**[WWW.GENUINBIOTECH.COM](http://WWW.GENUINBIOTECH.COM)**