

# Anti-GRIK2 Recombinant Rabbit Monoclonal Antibody



**Catalog #: 3026**

## Aliases

GRIK2; Glutamate Ionotropic Receptor Kainate Type Subunit 2; GluR-6; GluK2; EAA4; GLUK6; GLUR6; MRT6; Glutamate Receptor Ionotropic, Kainate 2; Excitatory Amino Acid Receptor 4; Glutamate Receptor 6; Glutamate Receptor, Ionotropic, Kainate 2; Putative NMDtranscript(Cassette\_171nt); Excitatory Amino Acid Receptor 4'; Glutamate Receptor Form A; Glutamate Receptor Form B; Glutamate Receptor Form C; Glutamate Receptor Form D; Glutamate Receptor Form E; GluK2(Alt\_5'UTR); BA487F5.1; NEDLAS; GluR6; GLR6

## Background

Gene Name: GRIK2

NCBI Gene Entry: [2898](#)

UniProt Entry: [Q13002](#)

## Application Information

Molecular Weight: Predicted, 103 kDa; observed, 98 kDa

Clonality: Rabbit monoclonal antibody

Clone ID: 24GB3695

Species Reactivity: Human, mouse, rat

Applications Tested: Western blotting (WB), immunocytochemistry (IC)

## Immunogen

A synthesized peptide derived from human GRIK2

## Isotype

Rabbit IgG

## Storage Buffer

Supplied in PBS (pH 7.4) containing 50% glycerol, and 0.02% sodium azide.

## Storage

Store at -20 °C for one year.

## Recommended Dilutions

Western Blotting (WB): 1:1,000-1:5,000

Immunocytochemistry (IC): 1:100-1:1,000

---

### SUPPORT

SUPPORT@GENUINBIOTECH.COM  
TEL: +1-540-855-7041

### ORDERS

SALES@GENUINBIOTECH.COM  
FAX: +1-540-855-7041

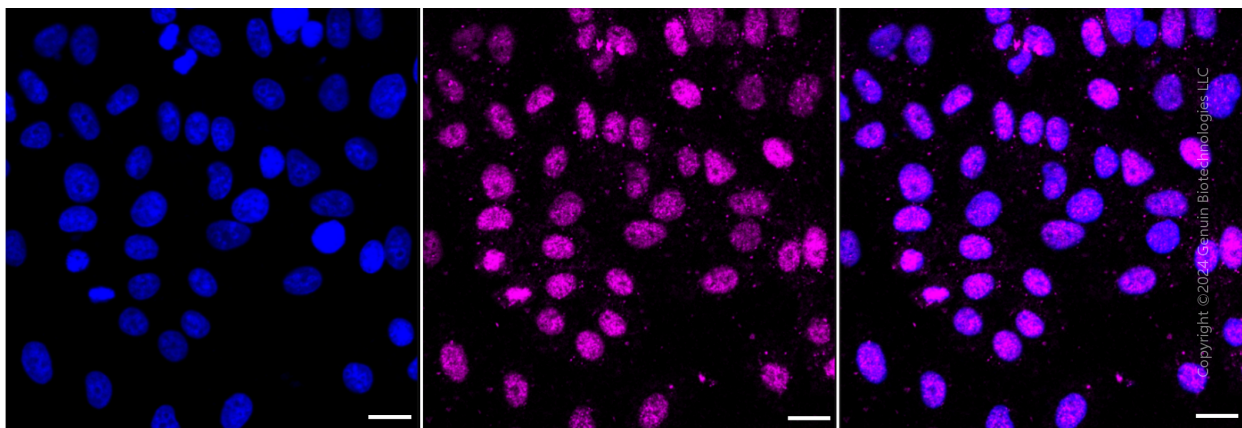
[WWW.GENUINBIOTECH.COM](http://WWW.GENUINBIOTECH.COM)

# Anti-GRIK2 Recombinant Rabbit Monoclonal Antibody

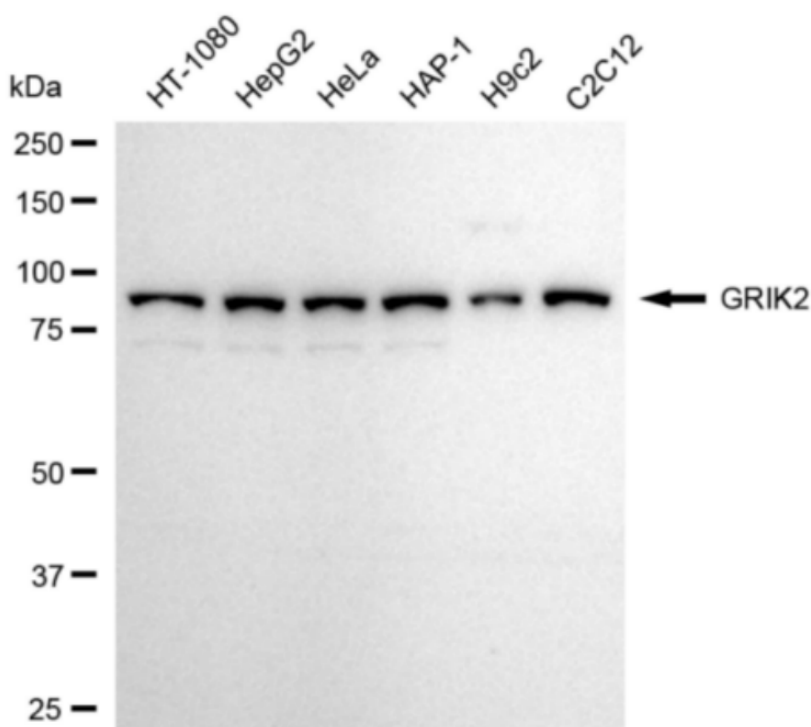
PAGE 2

**Note:** This product is for research use only.

## Validation Data



Immunocytochemical staining of HepG2 cells with anti-GRIK2 antibody (Cat#3026, 1:1,000). Nuclei were stained blue with DAPI; GRIK2 was stained magenta with Alexa Fluor® 647. Images were taken using Leica stellaris 5. Protein abundance based on laser Intensity and smart gain: Medium. Scale bar: 20  $\mu$ m.



Western blotting analysis using anti-GRIK2 antibody (Cat#3026). Total cell lysates (30  $\mu$ g) from various cell lines were loaded and separated by SDS-PAGE. The blot was incubated with anti-GRIK2 antibody (Cat#3026, 1:5,000) and HRP-conjugated goat anti-rabbit secondary antibody (Cat#201, 1:20,000) respectively. Image was developed using FeQ™ ECL Substrate Kit

### SUPPORT

SUPPORT@GENUINBIOTECH.COM  
TEL: +1-540-855-7041

### ORDERS

SALES@GENUINBIOTECH.COM  
FAX: +1-540-855-7041

WWW.GENUINBIOTECH.COM

# **Anti-GRIK2 Recombinant Rabbit Monoclonal Antibody**

PAGE 3

(Cat#226).

---

## **SUPPORT**

SUPPORT@GENUINBIOTECH.COM  
TEL: +1-540-855-7041

## **ORDERS**

SALES@GENUINBIOTECH.COM  
FAX: +1-540-855-7041

**[WWW.GENUINBIOTECH.COM](http://WWW.GENUINBIOTECH.COM)**