

Anti-Kallikrein Related Peptidase 2 Recombinant Rabbit Monoclonal Antibody



Catalog #: 3027

Aliases

KLK2; Kallikrein Related Peptidase 2; Kallikrein 2, Prostatic; Glandular Kallikrein-1; Tissue Kallikrein-2; Kallikrein-2; HGK-1; Glandular Kallikrein 2; EC 3.4.21.35; EC 3.4.21; KLK2A2; HK2

Background

Gene Name: KLK2

NCBI Gene Entry: [3817](#)

UniProt Entry: [P20151](#)

Application Information

Molecular Weight: Predicted, 29 kDa; observed, 33 kDa

Clonality: Rabbit monoclonal antibody

Clone ID: 24GB3700

Species Reactivity: Human, mouse, rat

Applications Tested: Western blotting (WB), flow cytometry (FCM), immunocytochemistry (IC)

Immunogen

A synthesized peptide derived from human KLK2

Isotype

Rabbit IgG

Storage Buffer

Supplied in PBS (pH 7.4) containing 50% glycerol, and 0.02% sodium azide.

Storage

Store at -20 °C for one year.

Recommended Dilutions

Western Blotting (WB): 1:1,000-1:5,000

Flow Cytometry (FCM): 1:2,000

Immunocytochemistry (IC): 1:100-1:1,000

Note: This product is for research use only.

SUPPORT

SUPPORT@GENUINBIOTECH.COM
TEL: +1-540-855-7041

ORDERS

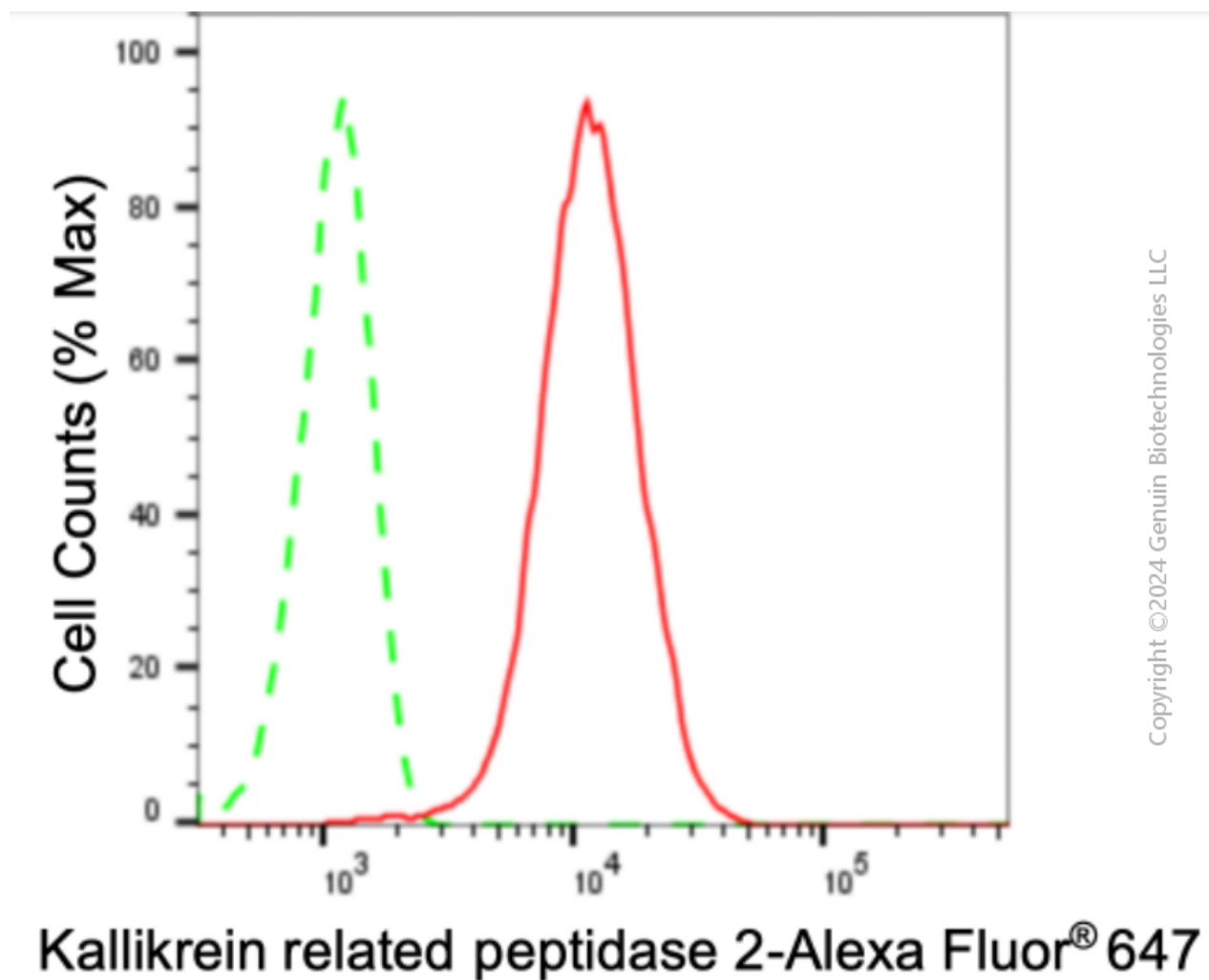
SALES@GENUINBIOTECH.COM
FAX: +1-540-855-7041

WWW.GENUINBIOTECH.COM

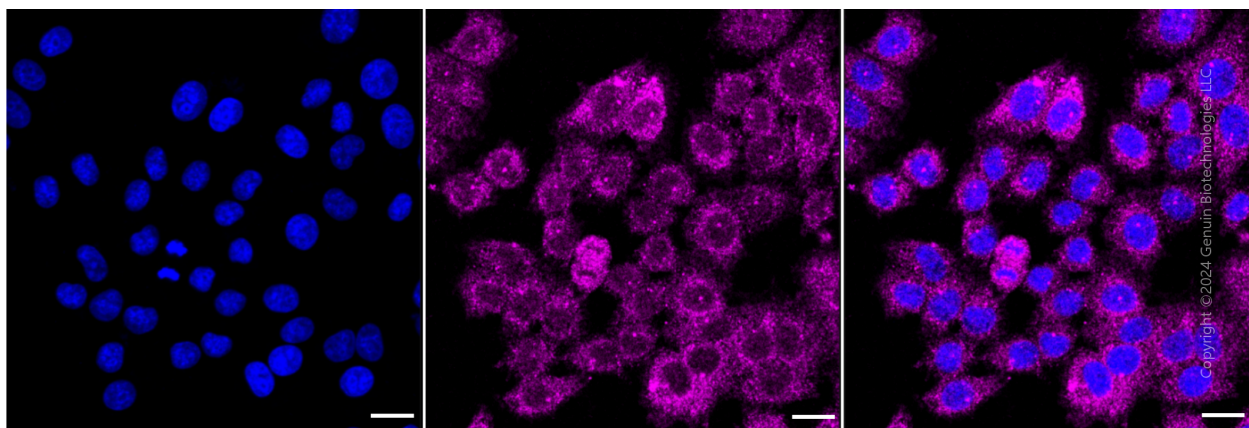
Anti-Kallikrein Related Peptidase 2 Recombinant Rabbit Monoclonal Antibody

PAGE 2

Validation Data



Flow cytometric analysis of Kallikrein related peptidase 2 expression in HepG2 cells using anti-Kallikrein related peptidase 2 antibody (Cat#3027, 1:2,000). Green, isotype control; red, Kallikrein related peptidase 2.



Immunocytochemical staining of HepG2 cells with anti-Kallikrein related peptidase 2 antibody

SUPPORT

SUPPORT@GENUINBIOTECH.COM
TEL: +1-540-855-7041

ORDERS

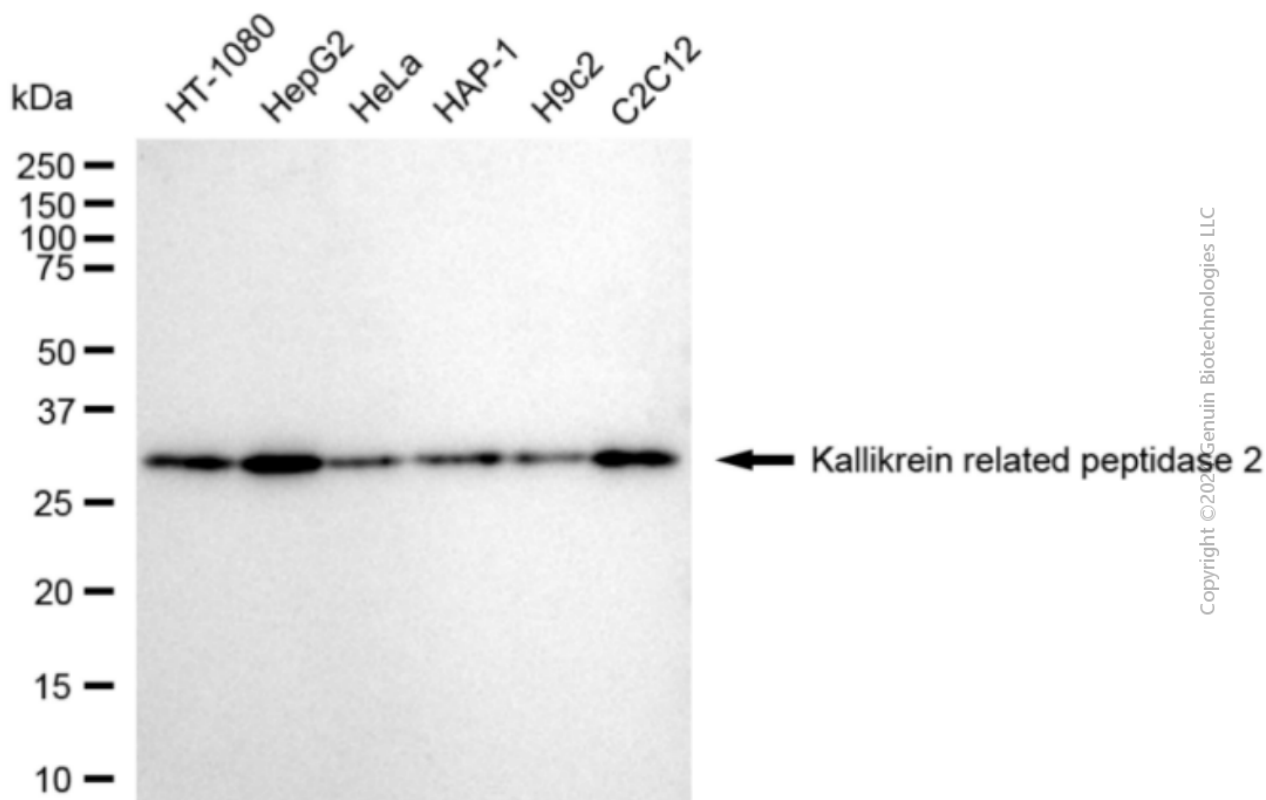
SALES@GENUINBIOTECH.COM
FAX: +1-540-855-7041

WWW.GENUINBIOTECH.COM

Anti-Kallikrein Related Peptidase 2 Recombinant Rabbit Monoclonal Antibody

PAGE 3

(Cat#3027, 1:1,000). Nuclei were stained blue with DAPI; Kallikrein related peptidase 2 was stained magenta with Alexa Fluor® 647. Images were taken using Leica stellaris 5. Protein abundance based on laser Intensity and smart gain: Meduim. Scale bar: 20 μ m.



Western blotting analysis using anti-Kallikrein related peptidase 2 antibody (Cat#3027). Total cell lysates (30 μ g) from various cell lines were loaded and separated by SDS-PAGE. The blot was incubated with anti-Kallikrein related peptidase 2 antibody (Cat#3027, 1:5,000) and HRP-conjugated goat anti-rabbit secondary antibody (Cat#201, 1:20,000) respectively. Image was developed using FeQ™ ECL Substrate Kit (Cat#226).

SUPPORT

SUPPORT@GENUINBIOTECH.COM
TEL: +1-540-855-7041

ORDERS

SALES@GENUINBIOTECH.COM
FAX: +1-540-855-7041

WWW.GENUINBIOTECH.COM