

Anti-Monoamine Oxidase A Recombinant Rabbit Monoclonal Antibody



Catalog #: 3029

Aliases

MAOA; Monoamine Oxidase A; Amine Oxidase [Flavin-Containing] A; Monoamine Oxidase Type A; EC 1.4.3.4; MAO-A; EC 1.4.3.21; EC 1.4.3; BRNRS

Background

Gene Name: MAOA

NCBI Gene Entry: [4128](#)

UniProt Entry: [P21397](#)

Application Information

Molecular Weight: Predicted, 60 kDa; observed, 60 kDa

Clonality: Rabbit monoclonal antibody

Clone ID: 24GB3710

Species Reactivity: Human, mouse, rat

Applications Tested: Western blotting (WB), flow cytometry (FCM), immunocytochemistry (IC)

Immunogen

A synthesized peptide derived from human Monoamine Oxidase A

Isotype

Rabbit IgG

Storage Buffer

Supplied in PBS (pH 7.4) containing 50% glycerol, and 0.02% sodium azide.

Storage

Store at -20 °C for one year.

Recommended Dilutions

Western Blotting (WB): 1:1,000-1:5,000

Flow Cytometry (FCM): 1:2,000

Immunocytochemistry (IC): 1:100-1:1,000

Note: This product is for research use only.

Validation Data

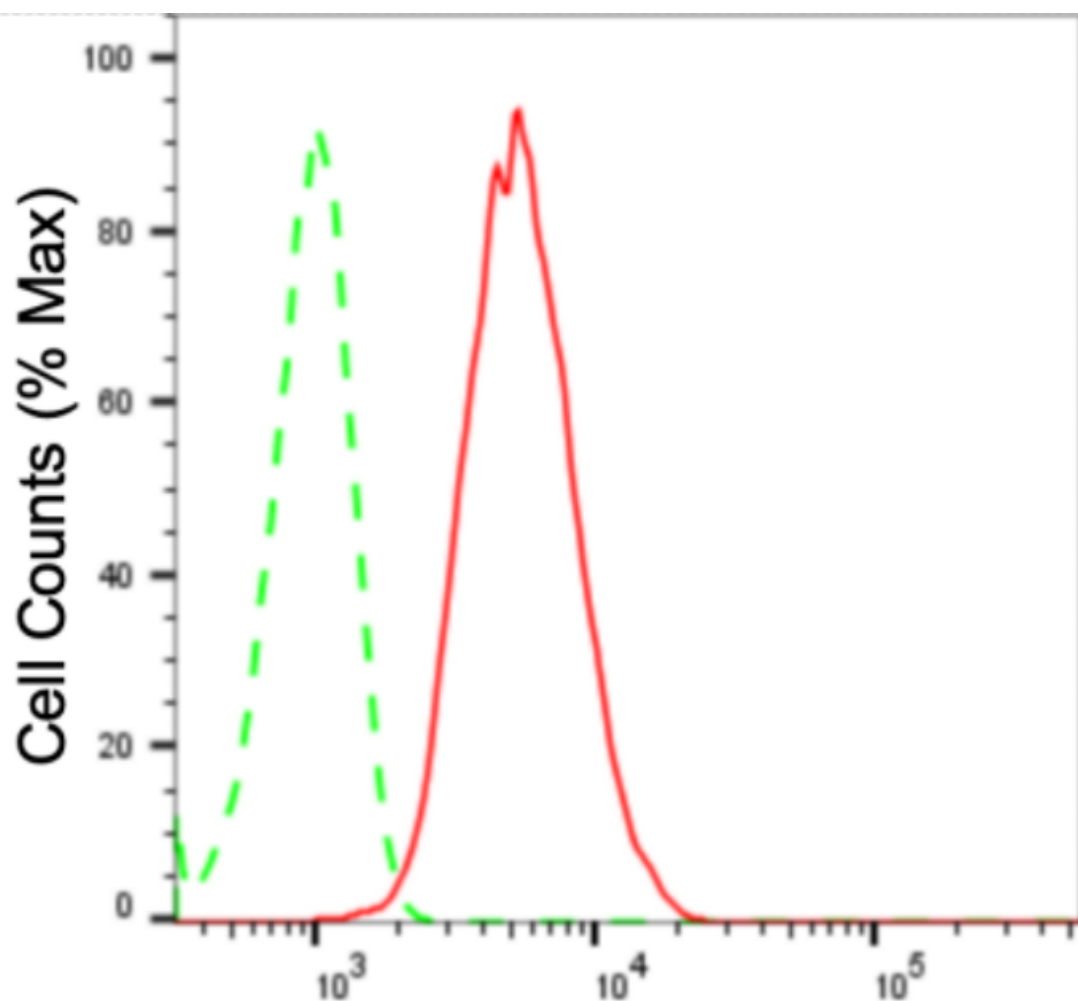
SUPPORT

SUPPORT@GENUINBIOTECH.COM
TEL: +1-540-855-7041

ORDERS

SALES@GENUINBIOTECH.COM
FAX: +1-540-855-7041

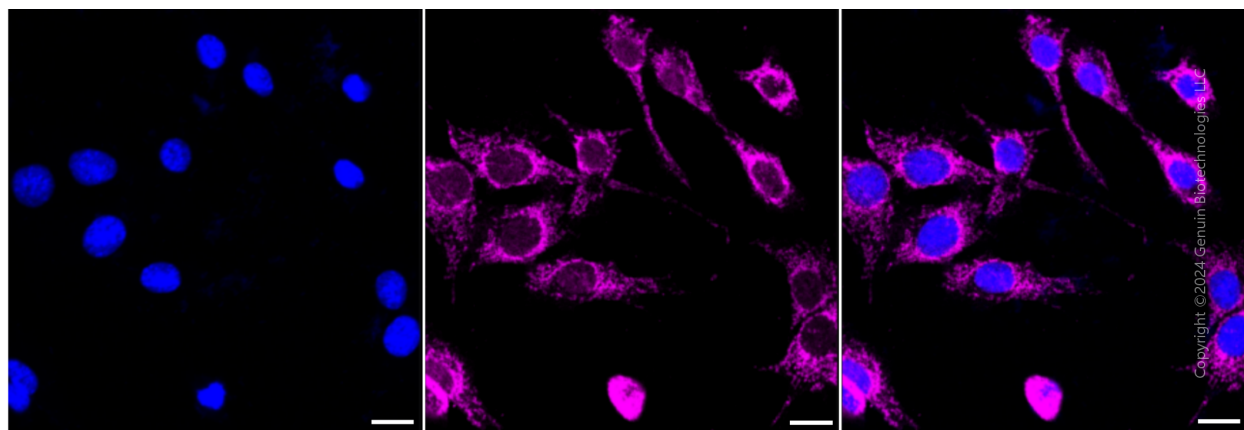
WWW.GENUINBIOTECH.COM



Copyright ©2024 Genuin Biotechnologies LLC

Monoamine oxidase A-Alexa Fluor® 647

Flow cytometric analysis of Monoamine oxidase A expression in C2C12 cells using anti-Monoamine oxidase A antibody (Cat#3029, 1:2,000). Green, isotype control; red, Monoamine oxidase A.



Immunocytochemical staining of C2C12 cells with anti-Monoamine oxidase A antibody

SUPPORT

SUPPORT@GENUINBIOTECH.COM
TEL: +1-540-855-7041

ORDERS

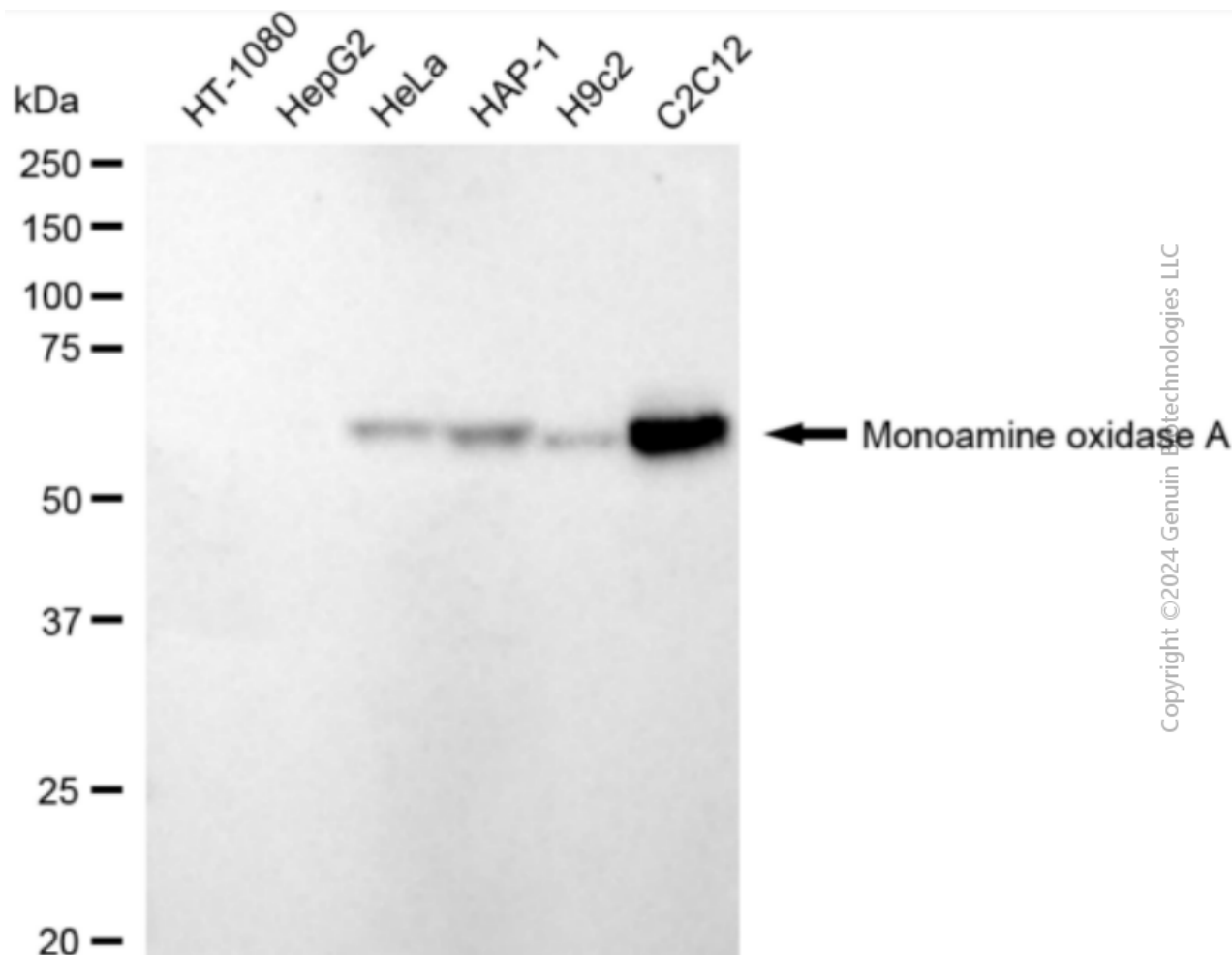
SALES@GENUINBIOTECH.COM
FAX: +1-540-855-7041

WWW.GENUINBIOTECH.COM

Anti-Monoamine Oxidase A Recombinant Rabbit Monoclonal Antibody

PAGE 3

(Cat#3029, 1:1,000) . Nuclei were stained blue with DAPI; Monoamine oxidase A was stained magenta with Alexa Fluor® 647. Images were taken using leica stellaris 5. Protein abundance based on laser intensity and smart gain: Medium. Scale bar: 20 μ m.



Western blotting analysis using anti-Monoamine oxidase A antibody (Cat#3029). Total cell lysates (30 μ g) from various cell lines were loaded and separated by SDS-PAGE. The blot was incubated with anti-Monoamine oxidase A antibody (Cat#3029, 1:5,000) and HRP-conjugated goat anti-rabbit secondary antibody (Cat#201, 1:20,000) respectively. Image was developed using FeQ™ ECL Substrate Kit (Cat#226).

SUPPORT

SUPPORT@GENUINBIOTECH.COM
TEL: +1-540-855-7041

ORDERS

SALES@GENUINBIOTECH.COM
FAX: +1-540-855-7041

WWW.GENUINBIOTECH.COM