

Anti-GSTO1 Recombinant Rabbit Monoclonal Antibody



Catalog #: 3034

Aliases

GSTO1; Glutathione S-Transferase Omega 1; GSTTLp28; P28; Glutathione-Dependent Dehydroascorbate Reductase; Glutathione S-Transferase Omega 1-1; Glutathione S-Transferase Omega-1; S-(Phenacyl)Glutathione Reductase; Monomethylarsonic Acid Reductase; MMA(V) Reductase; EC 2.5.1.18; GSTO 1-1; SPG-R; Epididymis Secretory Protein Li 21; Glutathione-S-Transferase Like; EC 1.20.4.2; EC 1.8.5.1; HEL-S-21; GSTTLP28; GSTO-1

Background

Gene Name: GSTO1

NCBI Gene Entry: [9446](#)

UniProt Entry: [P78417](#)

Application Information

Molecular Weight: Predicted, 28 kDa; observed, 28 kDa

Clonality: Rabbit monoclonal antibody

Clone ID: 24GB3735

Species Reactivity: Human, rat

Applications Tested: Western blotting (WB), flow cytometry (FCM), immunocytochemistry (IC)

Immunogen

A synthesized peptide derived from human GSTO1

Isotype

Rabbit IgG

Storage Buffer

Supplied in PBS (pH 7.4) containing 50% glycerol, and 0.02% sodium azide.

Storage

Store at -20 °C for one year.

Recommended Dilutions

Western Blotting (WB): 1:1,000-1:5,000

Flow Cytometry (FCM): 1:2,000

Immunocytochemistry (IC): 1:100-1:1,000

SUPPORT

SUPPORT@GENUINBIOTECH.COM
TEL: +1-540-855-7041

ORDERS

SALES@GENUINBIOTECH.COM
FAX: +1-540-855-7041

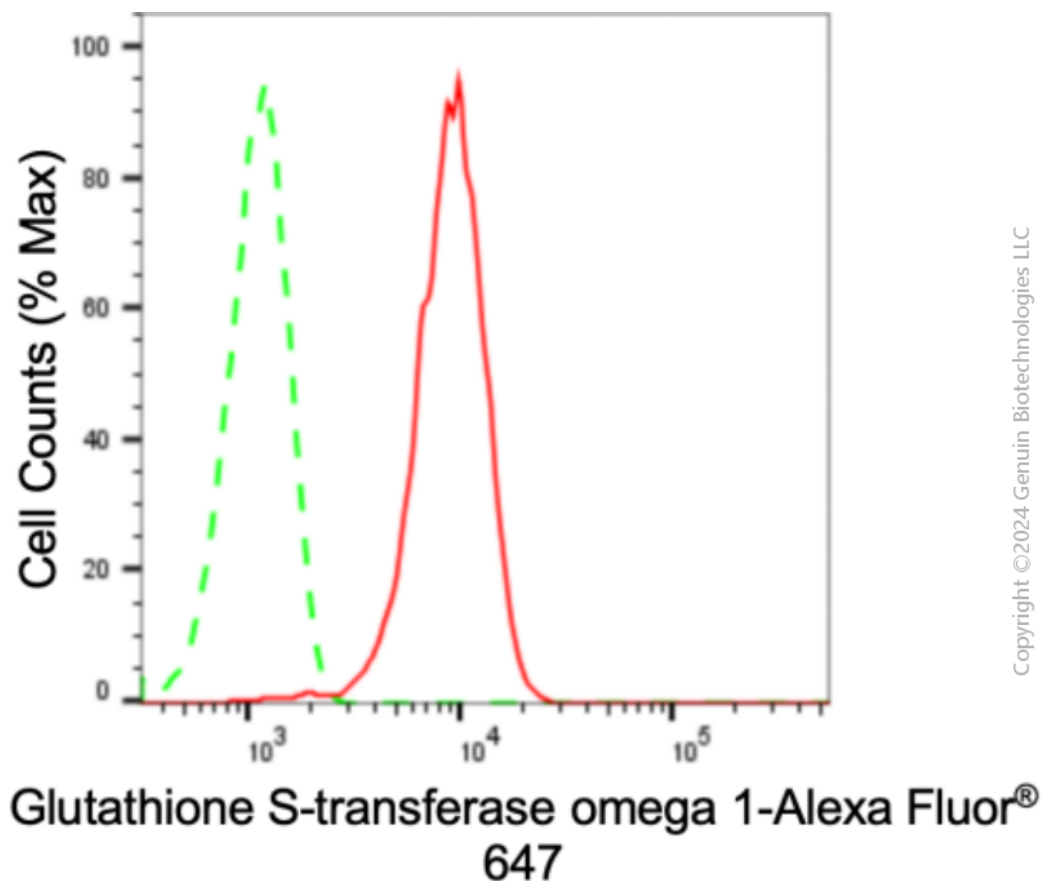
WWW.GENUINBIOTECH.COM

Anti-GSTO1 Recombinant Rabbit Monoclonal Antibody

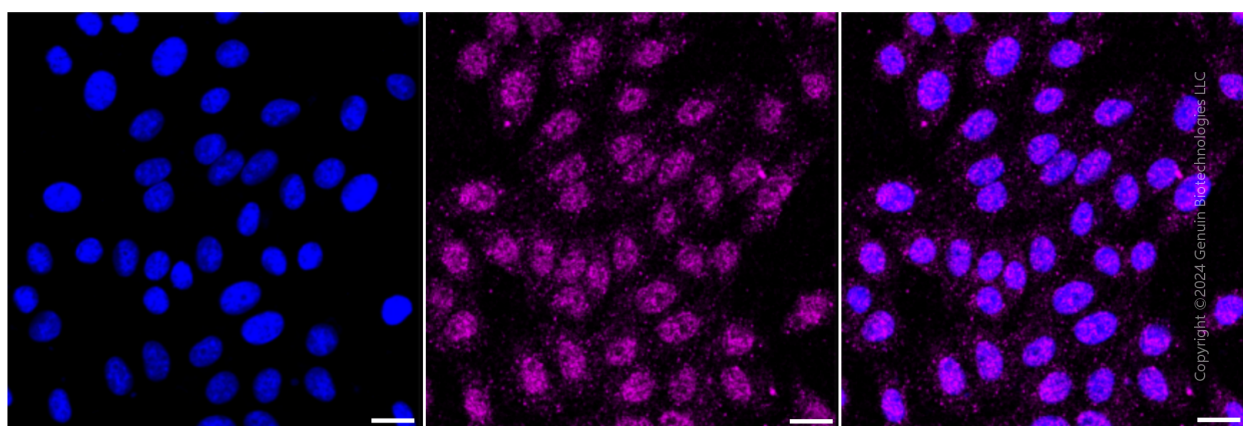
PAGE 2

Note: This product is for research use only.

Validation Data



Flow cytometric analysis of Glutathione S-transferase omega 1 expression in HepG2 cells using anti-Glutathione S-transferase omega 1 antibody (Cat#3034, 1:2,000). Green, isotype control; red, Glutathione S-transferase omega 1



Immunocytochemical staining of HepG2 cells with anti-Glutathione S-transferase omega 1 antibody (Cat#3034, 1:1,000). Nuclei were stained blue with DAPI; Glutathione S-transferase

SUPPORT

SUPPORT@GENUINBIOTECH.COM
TEL: +1-540-855-7041

ORDERS

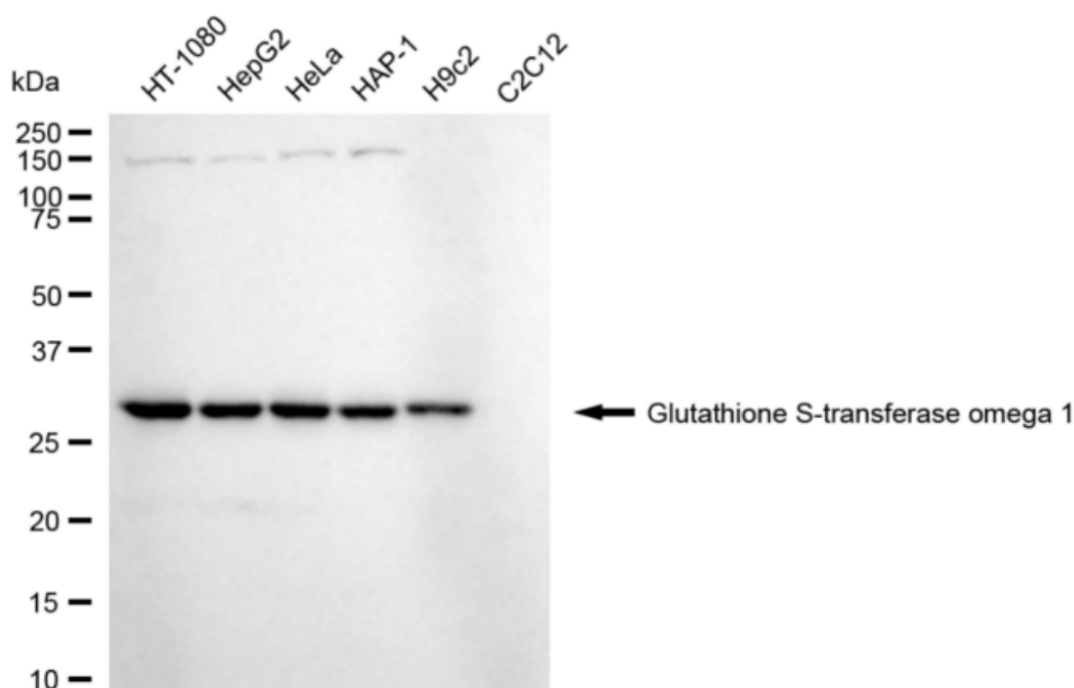
SALES@GENUINBIOTECH.COM
FAX: +1-540-855-7041

WWW.GENUINBIOTECH.COM

Anti-GSTO1 Recombinant Rabbit Monoclonal Antibody

PAGE 3

omega 1 was stained magenta with Alexa Fluor® 647. Images were taken using leica stellaris 5. Protein abundance based on laser intensity and smart gain: Medium. Scale bar: 20 µm.



Copyright ©2024 Genuin Biotechnologies LLC

Western blotting analysis using anti-Glutathione S-transferase omega 1 antibody (Cat#3034). Total cell lysates (30 µg) from various cell lines were loaded and separated by SDS-PAGE. The blot was incubated with anti-Glutathione S-transferase omega 1 antibody (Cat#3034, 1:5,000) and HRP-conjugated goat anti-rabbit secondary antibody (Cat#201, 1:20,000) respectively. Image was developed using FeQ™ ECL Substrate Kit (Cat#226).

SUPPORT

SUPPORT@GENUINBIOTECH.COM
TEL: +1-540-855-7041

ORDERS

SALES@GENUINBIOTECH.COM
FAX: +1-540-855-7041

WWW.GENUINBIOTECH.COM