

# Anti-DDB1 And CUL4 Associated Factor 1 Recombinant Rabbit Monoclonal Antibody



**Catalog #: 3036**

## Aliases

DCAF13; DDB1 And CUL4 Associated Factor 1; HSPC064; WDSOF1; Gm83; Sof; WD Repeat And SOF Domain-Containing Protein 1; WD Repeats And SOF1 Domain Containing; DDB1-And CUL4-Associated Factor 13; DKFZP564O0463

## Background

Gene Name: DCAF13

NCBI Gene Entry: [25879](#)

UniProt Entry: [Q9NV06](#)

## Application Information

Molecular Weight: Predicted, 51 kDa; observed, 49 kDa

Clonality: Rabbit monoclonal antibody

Clone ID: 24GB3745

Species Reactivity: Human, mouse, rat

Applications Tested: Western blotting (WB), flow cytometry (FCM), immunocytochemistry (IC)

## Immunogen

A synthesized peptide derived from human DCAF13

## Isotype

Rabbit IgG

## Storage Buffer

Supplied in PBS (pH 7.4) containing 50% glycerol, and 0.02% sodium azide.

## Storage

Store at -20 °C for one year.

## Recommended Dilutions

Western Blotting (WB): 1:1,000-1:5,000

Flow Cytometry (FCM): 1:2,000

Immunocytochemistry (IC): 1:100-1:1,000

**Note:** This product is for research use only.

---

### SUPPORT

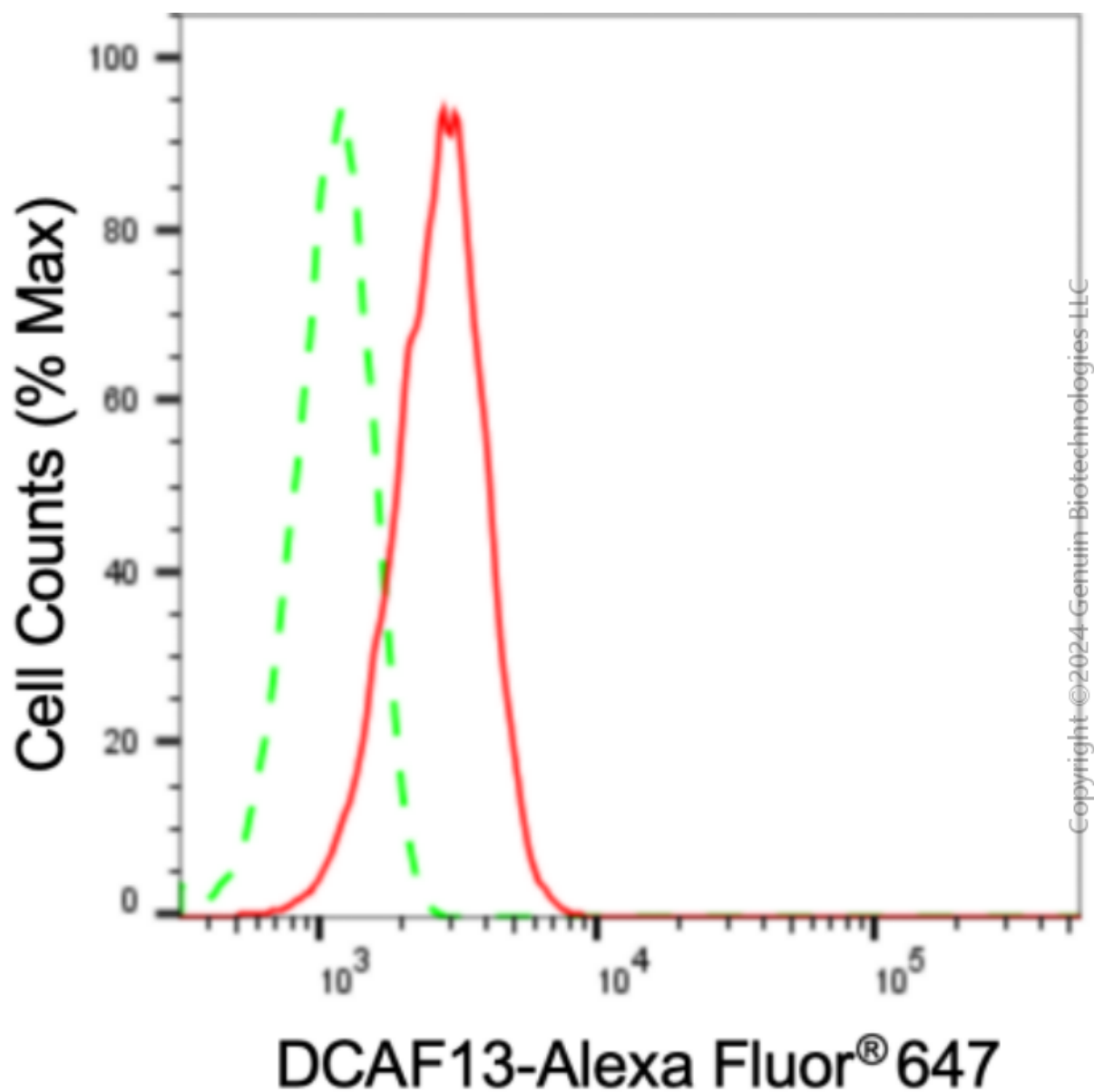
SUPPORT@GENUINBIOTECH.COM  
TEL: +1-540-855-7041

### ORDERS

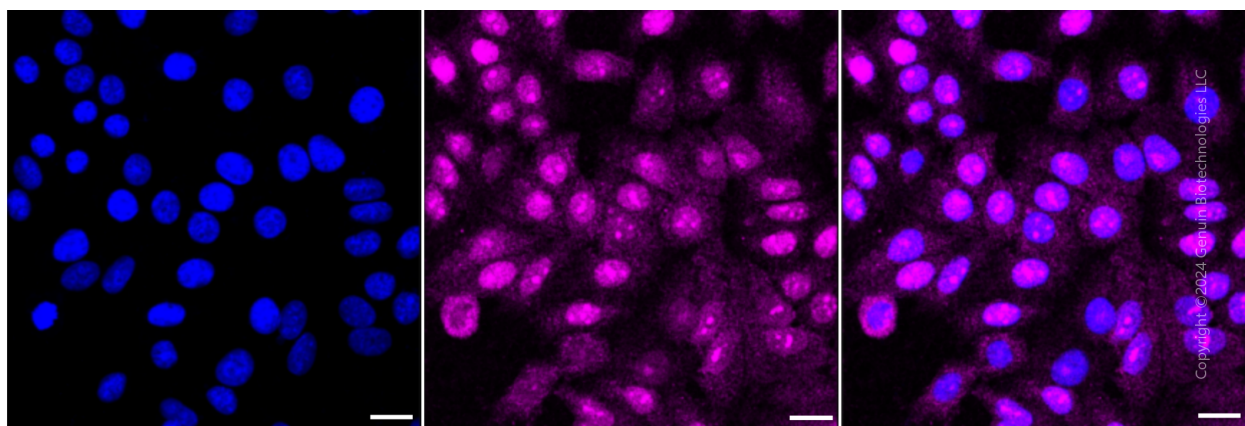
SALES@GENUINBIOTECH.COM  
FAX: +1-540-855-7041

[WWW.GENUINBIOTECH.COM](http://WWW.GENUINBIOTECH.COM)

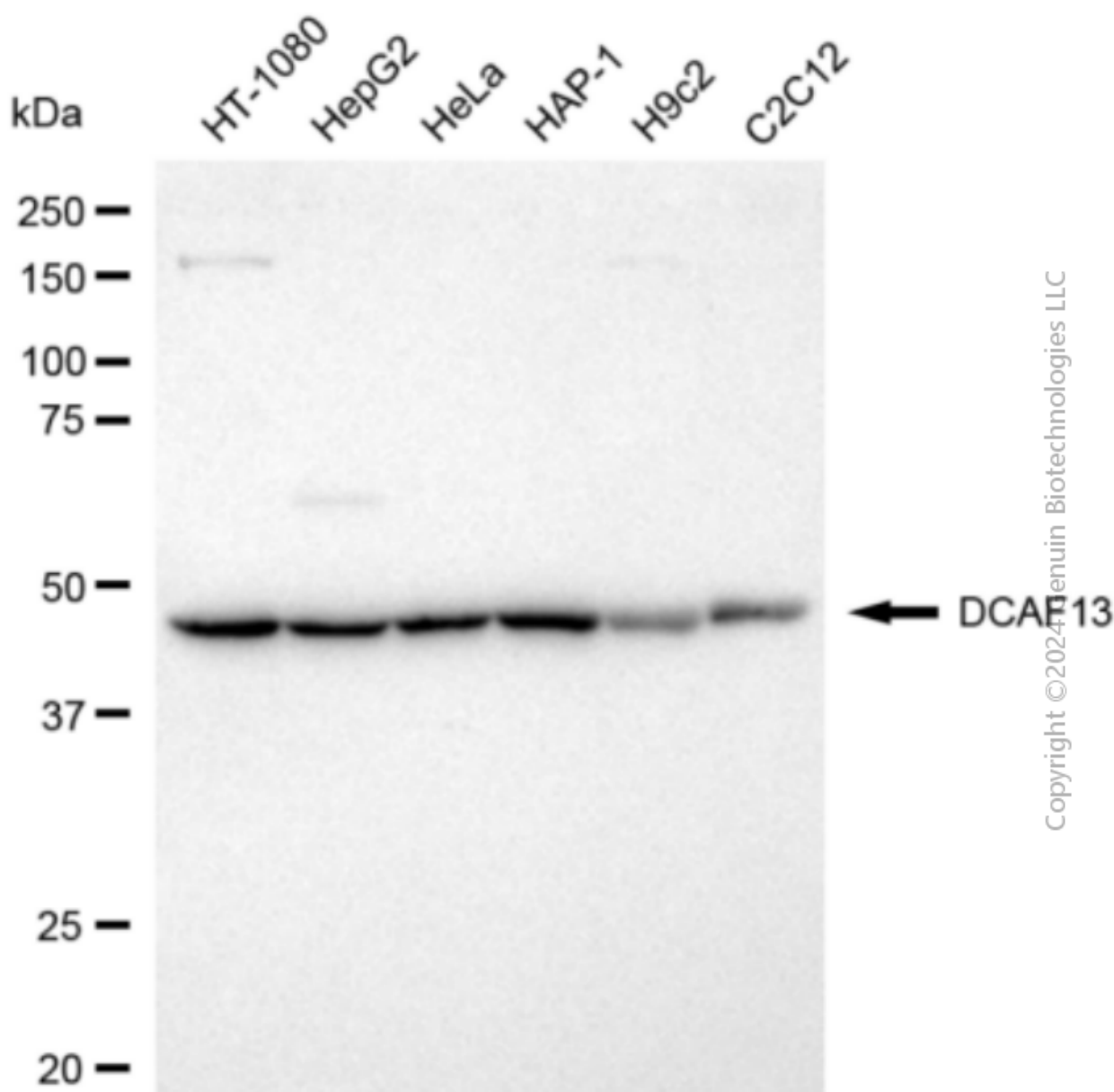
**Validation Data**



Flow cytometric analysis of DCAF13 expression in HepG2 cells using anti-DCAF13 antibody (Cat#3036, 1:2,000). Green, isotype control; red, DCAF13.



Immunocytochemical staining of HepG2 cells with anti-DCAF13 antibody (Cat#3036, 1:1,000) . Nuclei were stained blue with DAPI; DCAF13 was stained magenta with Alexa Fluor® 647. Images were taken using leica stellaris 5. Protein abundance based on laser intensity and smart gain: Medium. Scale bar: 20  $\mu$ m.



Western blotting analysis using anti-DCAF13 antibody (Cat#3036). Total cell lysates (30 µg) from various cell lines were loaded and separated by SDS-PAGE. The blot was incubated with anti-DCAF13 antibody (Cat#3036, 1:5,000) and HRP-conjugated goat anti-rabbit secondary antibody (Cat#201, 1:20,000) respectively. Image was developed using FeQ™ ECL Substrate Kit (Cat#226).