

Anti-BCLAF1 Recombinant Rabbit Monoclonal Antibody



Catalog #: 3037

Aliases

BCLAF1; BCL2 Associated Transcription Factor 1; BTF; BCLAF1 And THRAP3 Family Member 1; KIAA0164; Bcl-2-Associated Transcription Factor 1; BCL2-Associated Transcription Factor 1; BK211L9.1; Btf

Background

Gene Name: BCLAF1

NCBI Gene Entry: [9774](#)

UniProt Entry: [Q9NYF8](#)

Application Information

Molecular Weight: Predicted, 106 kDa, observed, 150 kDa

Clonality: Rabbit monoclonal antibody

Clone ID: 24GB3750

Species Reactivity: Human, mouse, rat

Applications Tested: Western blotting (WB), flow cytometry (FCM), immunocytochemistry (IC), Immunohistochemistry (IHC)

Immunogen

A synthesized peptide derived from human BTF

Isotype

Rabbit IgG

Storage Buffer

Supplied in PBS (pH 7.4) containing 50% glycerol, and 0.02% sodium azide.

Storage

Store at -20 °C for one year.

Recommended Dilutions

Western Blotting (WB): 1:1,000-1:5,000

Flow Cytometry (FCM): 1:2,000

Immunocytochemistry (IC): 1:100-1:1,000

Immunohistochemistry (IHC): 1:100-1:200

SUPPORT

SUPPORT@GENUINBIOTECH.COM
TEL: +1-540-855-7041

ORDERS

SALES@GENUINBIOTECH.COM
FAX: +1-540-855-7041

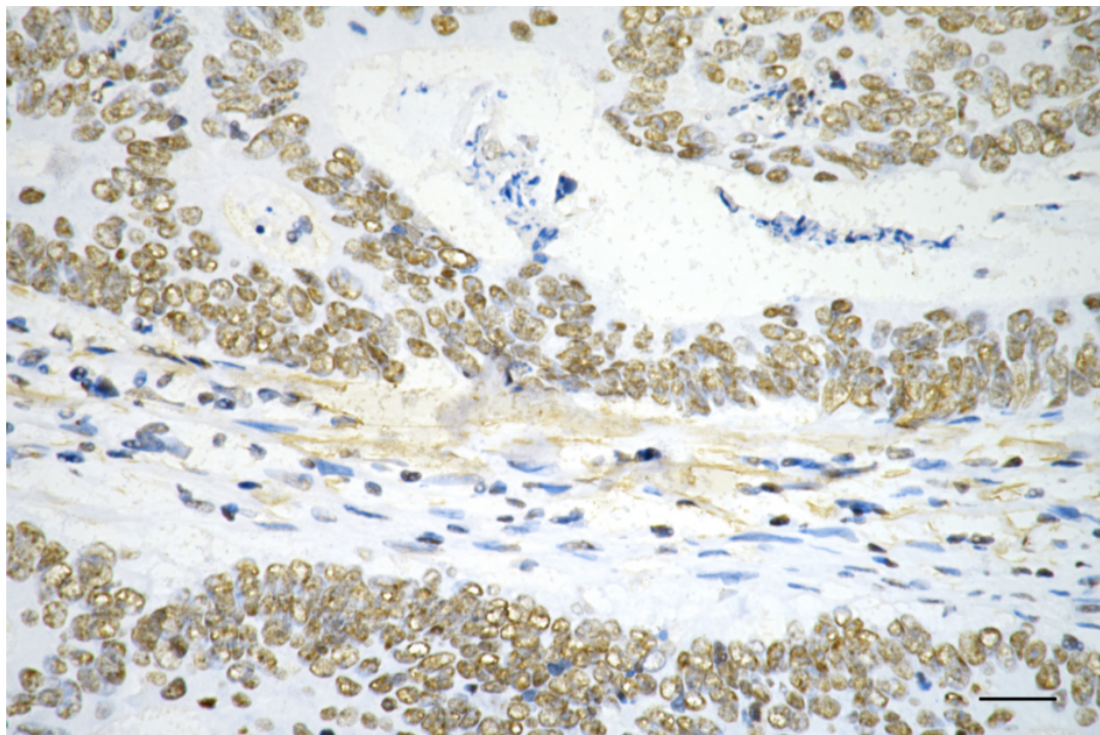
WWW.GENUINBIOTECH.COM

Anti-BCLAF1 Recombinant Rabbit Monoclonal Antibody

PAGE 2

Note: This product is for research use only.

Validation Data



Copyright ©2025 Genuin Biotechnologies LLC

Immunohistochemistry was performed on paraffin-embedded human sigmoid colon carcinoma using anti-BCL2 associated transcription factor 1 antibody (Cat#3037, 1:200). Antigen retrieval was done in sodium citrate buffer (pH 6.0). DAB was used for detection, with hematoxylin counterstaining. Images were acquired using a Nikon Ci-L Plus microscope (40× objective). Scale bar: 25 μ m.

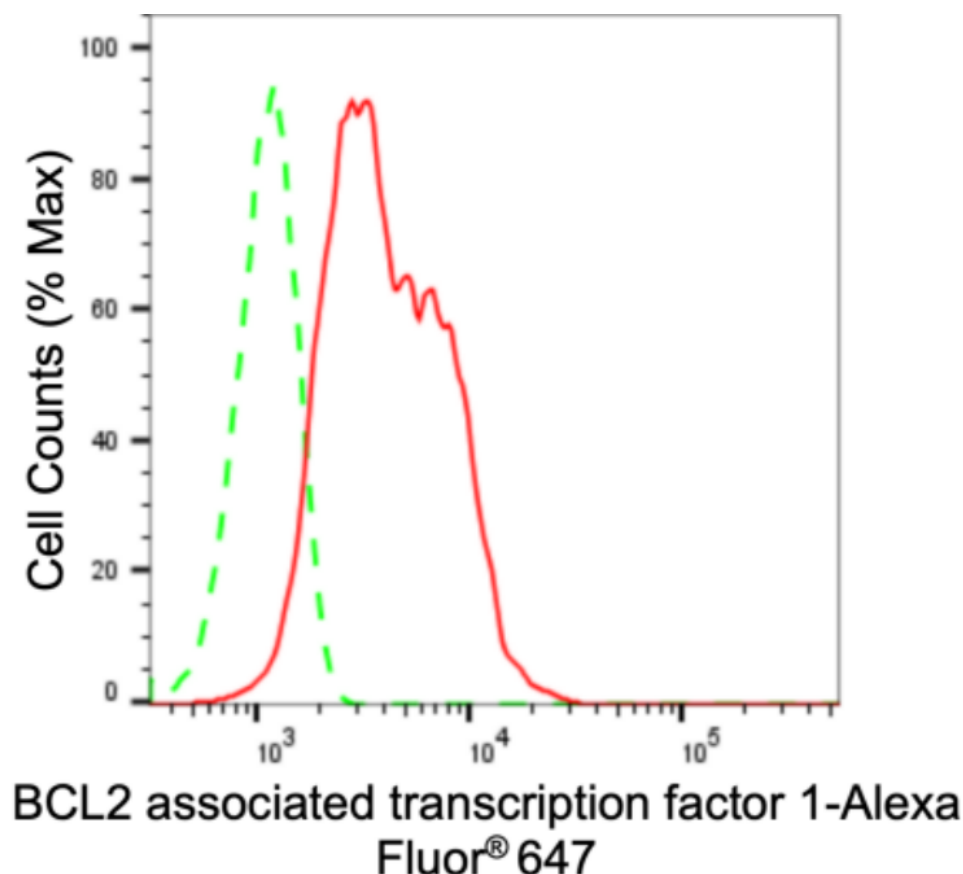
SUPPORT

SUPPORT@GENUINBIOTECH.COM
TEL: +1-540-855-7041

ORDERS

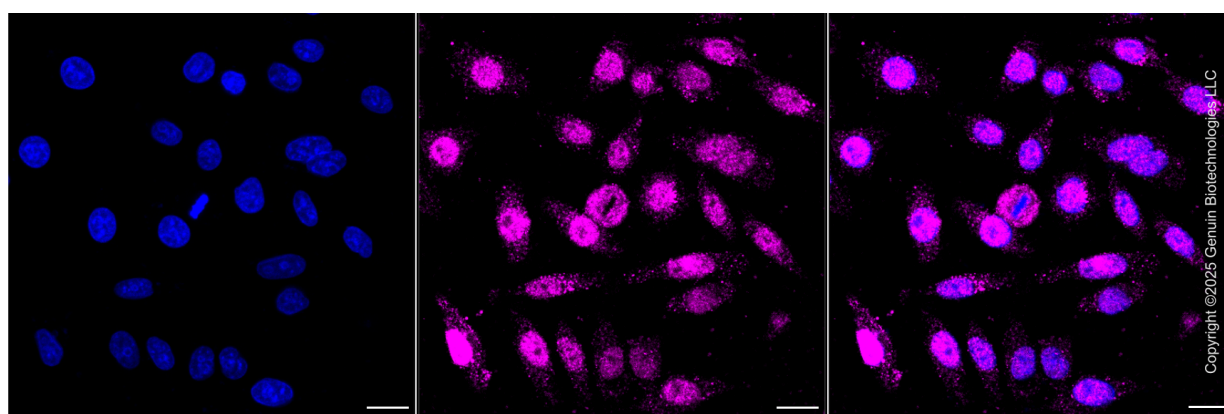
SALES@GENUINBIOTECH.COM
FAX: +1-540-855-7041

WWW.GENUINBIOTECH.COM



Copyright ©2024 Genuin Biotechnologies LLC

Flow cytometric analysis of BCL2 associated transcription factor 1 expression in HepG2 cells using anti-BCL2 associated transcription factor 1 antibody (Cat#3037, 1:2,000). Green, isotype control; red, BCL2 associated transcription factor 1.



Immunocytochemical staining of HepG2 cells with anti-BCL2 associated transcription factor 1 antibody (Cat#3037, 1:1000). Nuclei were stained blue with DAPI; BCL2 associated transcription factor 1 was stained magenta with Alexa Fluor® 647. Images were taken using Leica stellaris 5. Protein abundance based on laser Intensity and smart gain: Medium. Scale bar, 20 μ m.

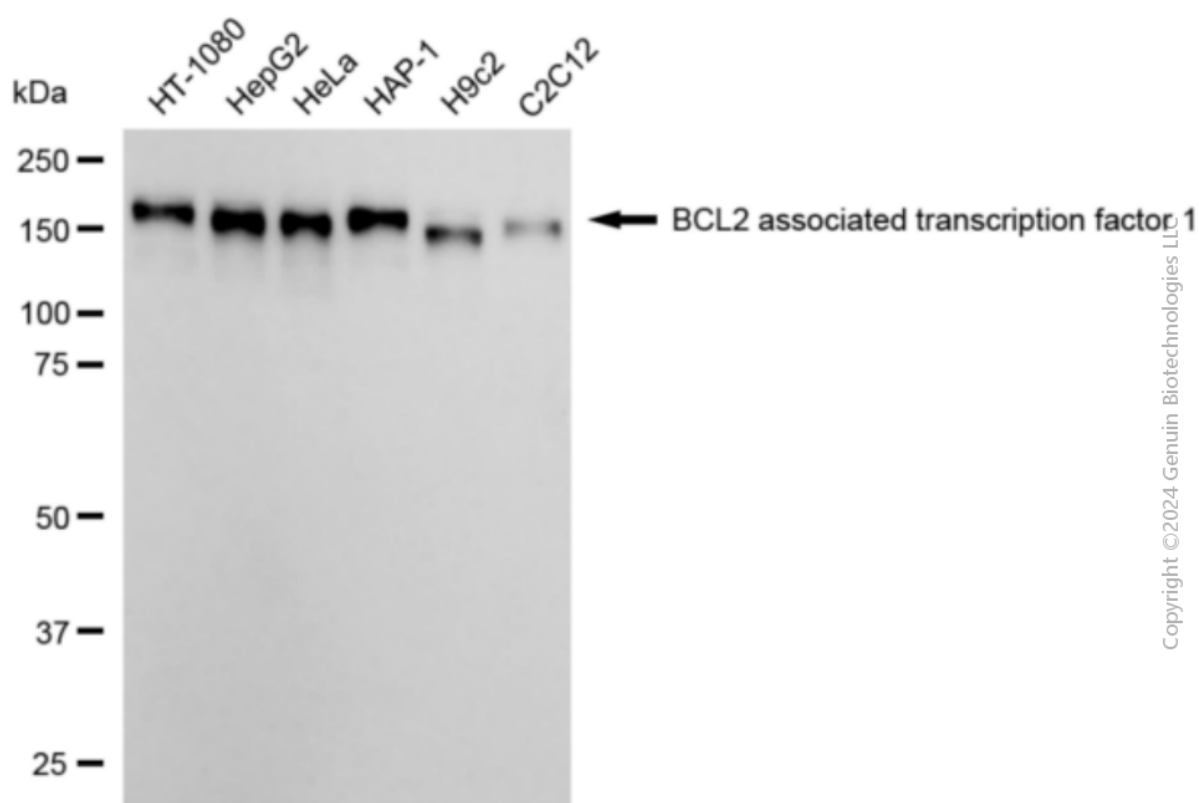
SUPPORT

SUPPORT@GENUINBIOTECH.COM
TEL: +1-540-855-7041

ORDERS

SALES@GENUINBIOTECH.COM
FAX: +1-540-855-7041

WWW.GENUINBIOTECH.COM



Western blotting analysis using anti-BCL2 associated transcription factor 1 antibody (Cat#3037). Total cell lysates (30 µg) from various cell lines were loaded and separated by SDS-PAGE. The blot was incubated with anti-BCL2 associated transcription factor 1 antibody (Cat#3037, 1:5,000) and HRP-conjugated goat anti-rabbit secondary antibody (Cat#201, 1:20,000) respectively. Image was developed using FeQ™ ECL Substrate Kit (Cat#226).