

Anti-Adenosylhomocysteinase Recombinant Rabbit Monoclonal Antibody



Catalog #: 3041

Aliases

AHCY; Adenosylhomocysteinase; AdoHcyase; SAHH; S-Adenosyl-L Homocysteine Hydrolase; S-Adenosylhomocysteine Hydrolase; Epididymis Secretory Sperm Binding Protein; EC 3.13.2.1; EC 3.3.1.1

Background

Gene Name: AHCY

NCBI Gene Entry: [191](#)

UniProt Entry: [P23526](#)

Application Information

Molecular Weight: Predicted, 48 kDa; observed, 47 kDa

Clonality: Rabbit monoclonal antibody

Clone ID: 24GB3770

Species Reactivity: Human, mouse, rat

Applications Tested: Western blotting (WB), flow cytometry (FCM), immunocytochemistry (IC)

Immunogen

A synthesized peptide derived from human AHCY

Isotype

Rabbit IgG

Storage Buffer

Supplied in PBS (pH 7.4) containing 50% glycerol, and 0.02% sodium azide.

Storage

Store at -20 °C for one year.

Recommended Dilutions

Western Blotting (WB): 1:1,000-1:5,000

Flow Cytometry (FCM): 1:2,000

Immunocytochemistry (IC): 1:100-1:1,000

Note: This product is for research use only.

SUPPORT

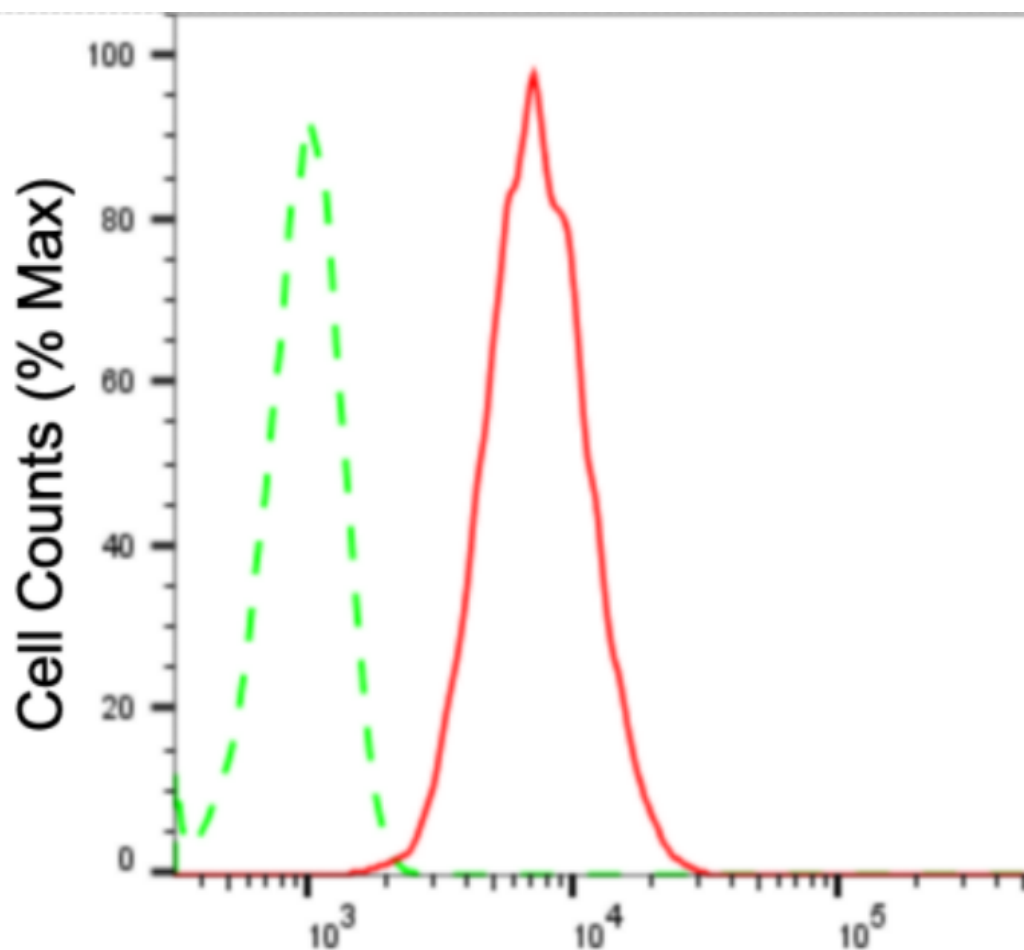
SUPPORT@GENUINBIOTECH.COM
TEL: +1-540-855-7041

ORDERS

SALES@GENUINBIOTECH.COM
FAX: +1-540-855-7041

WWW.GENUINBIOTECH.COM

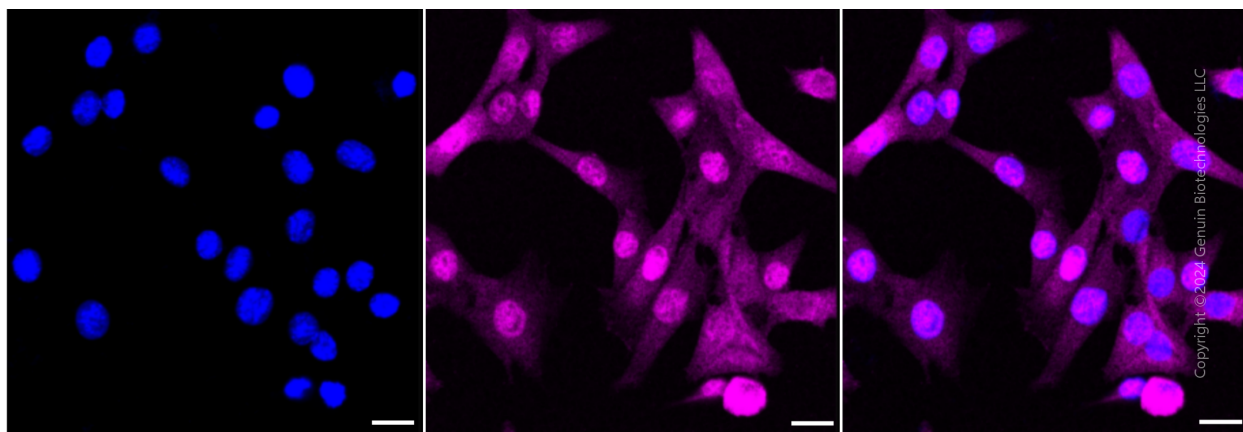
Validation Data



Copyright ©2024 Genuin Biotechnologies LLC

Adenosylhomocysteinase-Alexa Fluor® 647

Flow cytometric analysis of Adenosylhomocysteinase expression in C2C12 cells using anti-Adenosylhomocysteinase antibody (Cat#3041, 1:2,000). Green, isotype control; red, Adenosylhomocysteinase.



Copyright ©2024 Genuin Biotechnologies LLC

SUPPORT

SUPPORT@GENUINBIOTECH.COM
TEL: +1-540-855-7041

ORDERS

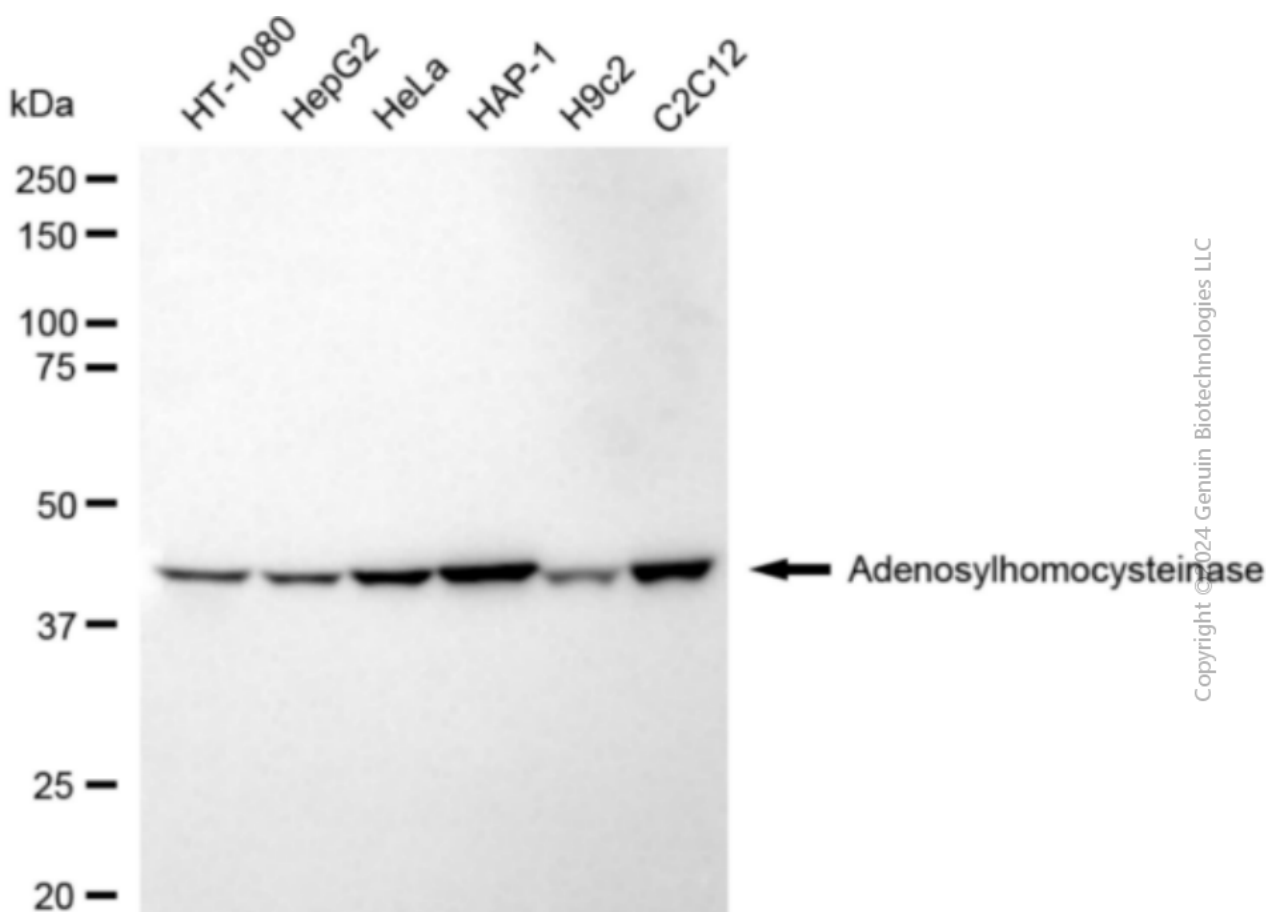
SALES@GENUINBIOTECH.COM
FAX: +1-540-855-7041

WWW.GENUINBIOTECH.COM

Anti-Adenosylhomocysteinase Recombinant Rabbit Monoclonal Antibody

PAGE 3

Immunocytochemical staining of C2C12 cells with anti-Adenosylhomocysteinase antibody (Cat#3041, 1:1,000). Nuclei were stained blue with DAPI; Adenosylhomocysteinase was stained magenta with Alexa Fluor® 647. Images were taken using leica stellaris 5. Protein abundance based on laser intensity and smart gain: Medium. Scale bar: 20 μ m.



Western blotting analysis using anti-Adenosylhomocysteinase antibody (Cat#3041). Total cell lysates (30 μ g) from various cell lines were loaded and separated by SDS-PAGE. The blot was incubated with anti-Adenosylhomocysteinase antibody (Cat#3041, 1:5,000) and HRP-conjugated goat anti-rabbit secondary antibody (Cat#201, 1:20,000) respectively. Image was developed using FeQ™ ECL Substrate Kit (Cat#226).

SUPPORT

SUPPORT@GENUINBIOTECH.COM
TEL: +1-540-855-7041

ORDERS

SALES@GENUINBIOTECH.COM
FAX: +1-540-855-7041

WWW.GENUINBIOTECH.COM