

Anti-EIF4E Recombinant Rabbit Monoclonal Antibody



Catalog #: 3045

Aliases

EIF4E; Eukaryotic Translation Initiation Factor 4E; EIF4EL1; EIF4E1; EIF4F; MRNA Cap-Binding Protein; EIF-4F 25 KDa Subunit; EIF-4E; Eukaryotic Translation Initiation Factor 4E-Like 1; AUTS19; EIF4E; CBP

Background

Gene Name: EIF4E

NCBI Gene Entry: [1977](#)

UniProt Entry: [P06730](#)

Application Information

Molecular Weight: Predicted, 25 kDa; observed, 25 kDa

Clonality: Rabbit monoclonal antibody

Clone ID: 24GB3790

Species Reactivity: Human, mouse, rat

Applications Tested: Western blotting (WB), flow cytometry (FCM), immunocytochemistry (IC)

Immunogen

A synthesized peptide derived from human EIF4E

Isotype

Rabbit IgG

Storage Buffer

Supplied in PBS (pH 7.4) containing 50% glycerol, and 0.02% sodium azide.

Storage

Store at -20 °C for one year.

Recommended Dilutions

Western Blotting (WB): 1:1,000-1:5,000

Flow Cytometry (FCM): 1:2,000

Immunocytochemistry (IC): 1:100-1:1,000

Note: This product is for research use only.

SUPPORT

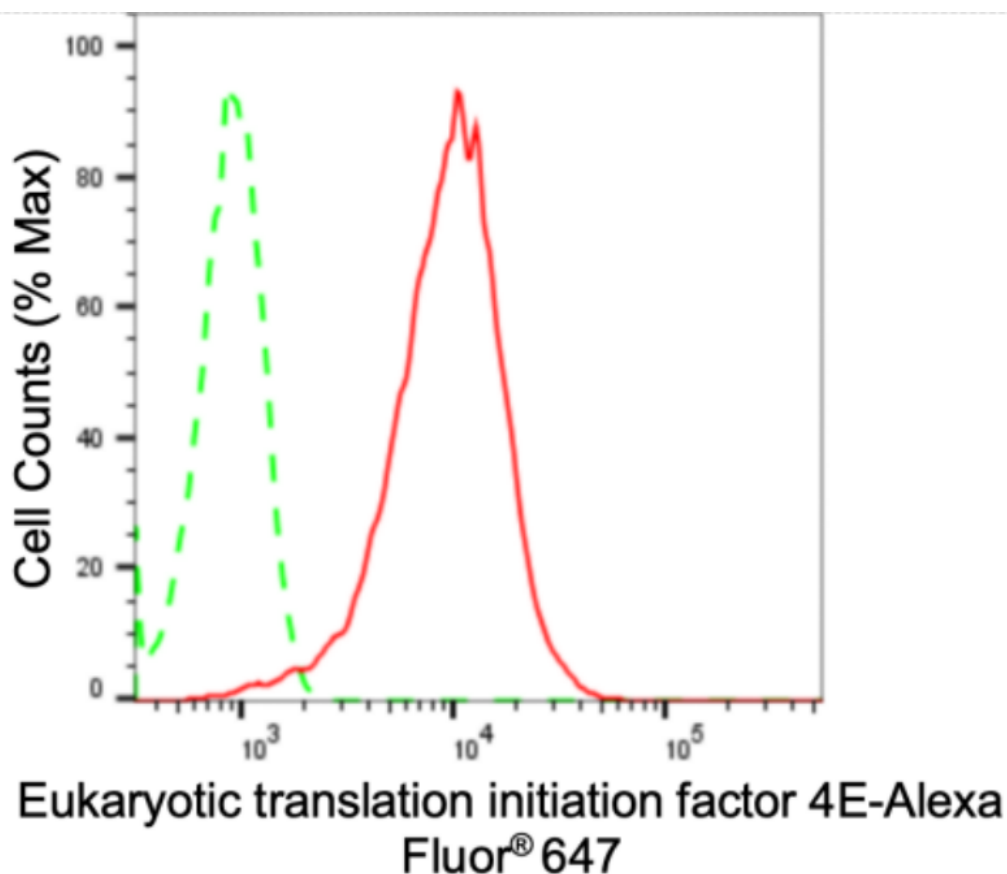
SUPPORT@GENUINBIOTECH.COM
TEL: +1-540-855-7041

ORDERS

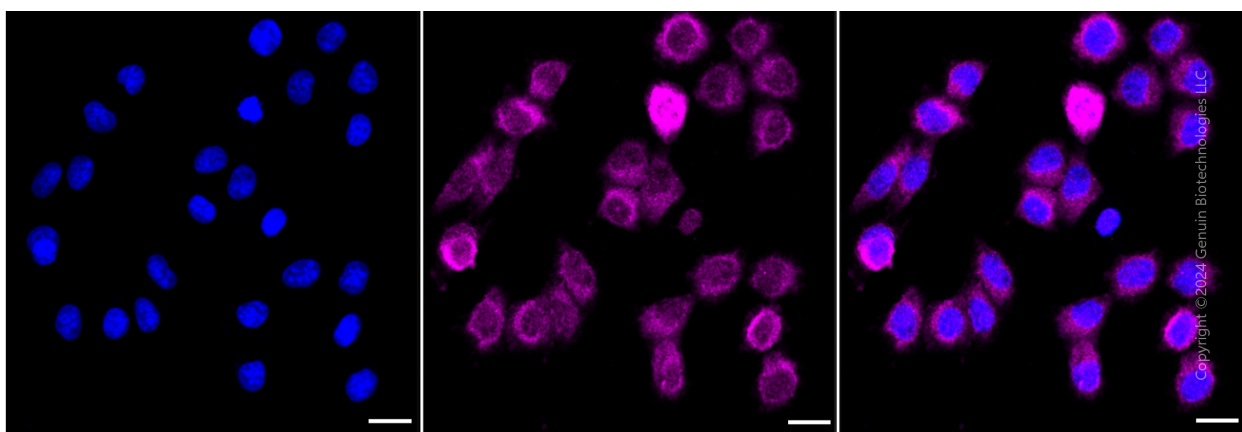
SALES@GENUINBIOTECH.COM
FAX: +1-540-855-7041

WWW.GENUINBIOTECH.COM

Validation Data



Flow cytometric analysis of Eukaryotic translation initiation factor 4E expression in HepG2 cells using anti-Eukaryotic translation initiation factor 4E antibody (Cat#3045, 1:2,000). Green, isotype control; red, Eukaryotic translation initiation factor 4E.



Immunocytochemical staining of HepG2 cells with anti-Eukaryotic translation initiation factor 4E antibody (Cat#3045, 1:1,000). Nuclei were stained blue with DAPI; Eukaryotic translation initiation factor 4E was stained magenta with Alexa Fluor® 647. Images were taken using Leica stellaris 5. Protein abundance based on laser Intensity and smart gain: Medium. Scale bar: 20 μ m.

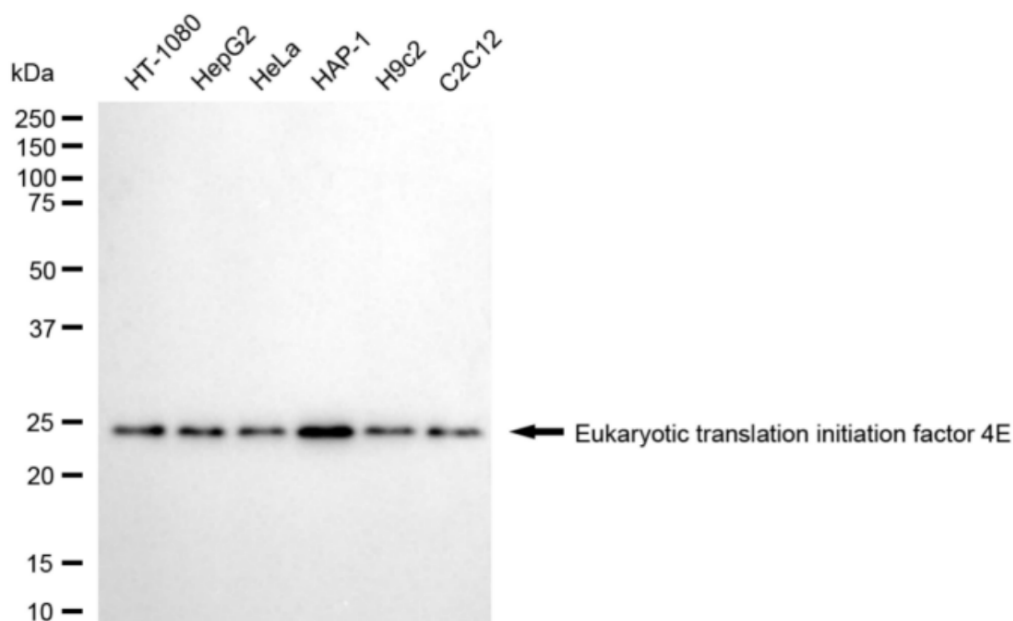
SUPPORT

SUPPORT@GENUINBIOTECH.COM
TEL: +1-540-855-7041

ORDERS

SALES@GENUINBIOTECH.COM
FAX: +1-540-855-7041

WWW.GENUINBIOTECH.COM



Copyright ©2024 Genuin Biotechnologies LLC

Western blotting analysis using anti-Eukaryotic translation initiation factor 4E antibody (Cat#3045). Total cell lysates (30 μ g) from various cell lines were loaded and separated by SDS-PAGE. The blot was incubated with anti-Eukaryotic translation initiation factor 4E antibody (Cat#3045, 1:5,000) and HRP-conjugated goat anti-rabbit secondary antibody (Cat#201, 1:20,000) respectively. Image was developed using FeQ™ ECL Substrate Kit (Cat#226).