

# Anti-Fc Gamma Receptor IIIa Recombinant Rabbit Monoclonal Antibody



**Catalog #: 3048**

## Aliases

FCGR3A; Fc Gamma Receptor IIIa; FcgammaRIIIa; FcGRIIIA; CD16a; FCGR3; CD16; FCG3; Low Affinity Immunoglobulin Gamma Fc Region Receptor III-A; Fc Fragment Of IgG, Low Affinity IIIa, Receptor (CD16a); Fc Fragment Of IgG Receptor IIIa; IgG Fc Receptor III-A; IgG Fc Receptor III-2; Fc-Gamma RIII-Alpha; CD16a Antigen; CD16-II; IGFR3; Low Affinity Immunoglobulin Gamma Fc Region Receptor III-A/III-B Recombinant; Low Affinity Immunoglobulin Gamma Receptor III-A Fc Fragment; Fc Fragment Of IgG, Low Affinity IIIa, Receptor For (CD16); Low Affinity Immunoglobulin Gamma Fc Region Receptor III-B; Fc Fragment Of IgG, Low Affinity III, Receptor For (CD16); Immunoglobulin G Fc Receptor III; Fc-Gamma Receptor III-2 (CD 16); Neutrophil-Specific Antigen NA; Fc-Gamma Receptor IIIb (CD16); Fc Gamma Receptor III-A; Fc-Gamma RIIIa; Fc-Gamma RIII; FcgammaRIIIA; FCGRIII; FCRIIIA; FcRIIIa; FCR-10; FCRIII; FcRIII; FcR-10; IMD20; CD16A

## Background

Gene Name: FCGR3A

NCBI Gene Entry: [2214](#)

UniProt Entry: [P08637](#)

## Application Information

Molecular Weight: Predicted, 29 kDa; observed, 42 kDa

Clonality: Rabbit monoclonal antibody

Clone ID: 24GB3805

Species Reactivity: Human, mouse, rat

Applications Tested: Western blotting (WB), flow cytometry (FCM), immunocytochemistry (IC)

## Immunogen

A synthesized peptide derived from human CD16

## Isotype

Rabbit IgG

## Storage Buffer

Supplied in PBS (pH 7.4) containing 50% glycerol, and 0.02% sodium azide.

## Storage

Store at -20 °C for one year.

---

### SUPPORT

SUPPORT@GENUINBIOTECH.COM  
TEL: +1-540-855-7041

### ORDERS

SALES@GENUINBIOTECH.COM  
FAX: +1-540-855-7041

[WWW.GENUINBIOTECH.COM](http://WWW.GENUINBIOTECH.COM)

## Recommended Dilutions

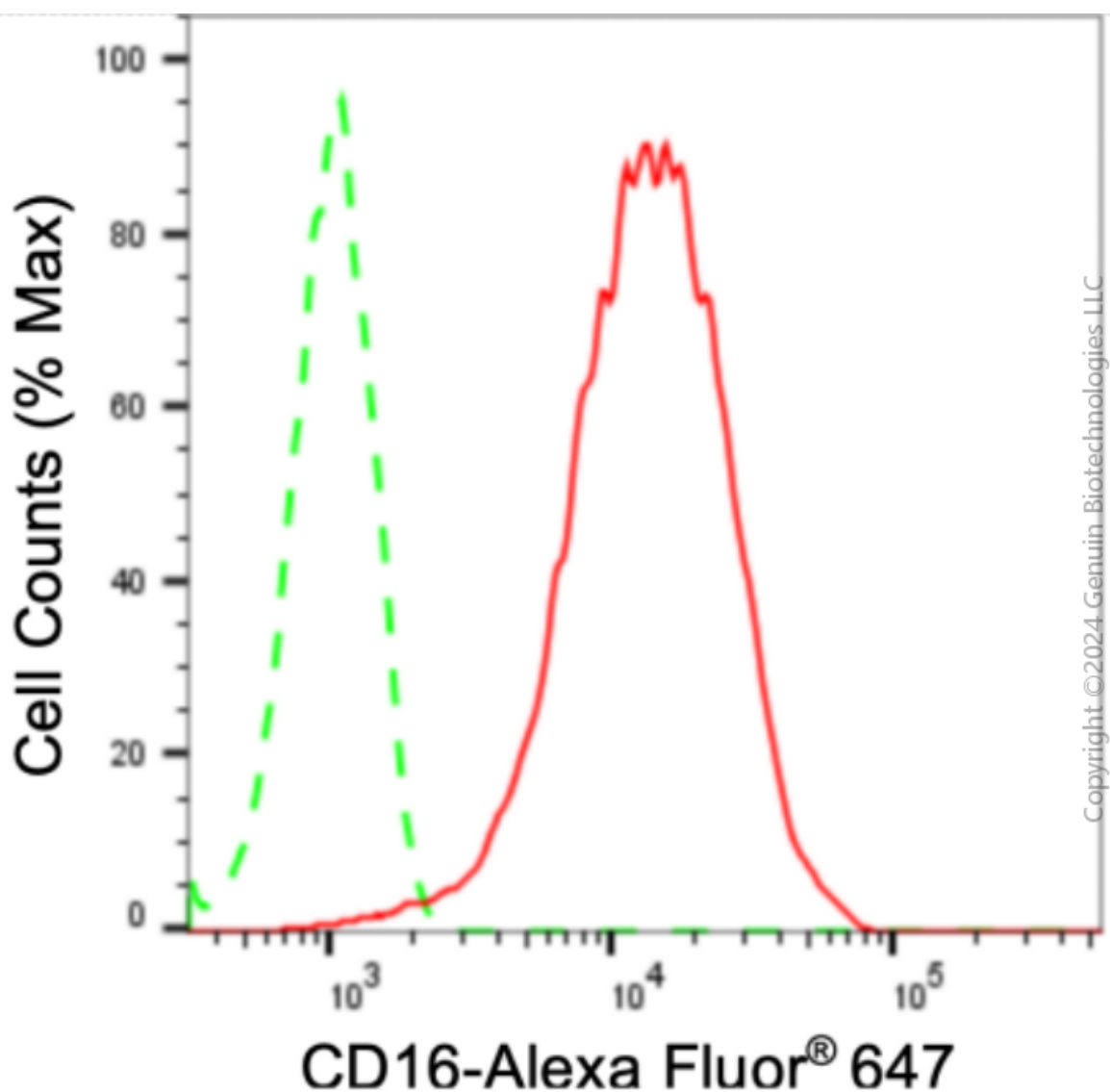
Western Blotting (WB): 1:1,000-1:5,000

Flow Cytometry (FCM): 1:2,000

Immunocytochemistry (IC): 1:100-1:1,000

**Note:** This product is for research use only.

## Validation Data



Flow cytometric analysis of CD16 expression in HT-1080 cells using anti-CD16 antibody (Cat#3048, 1:2,000). Green, isotype control; red, CD16.

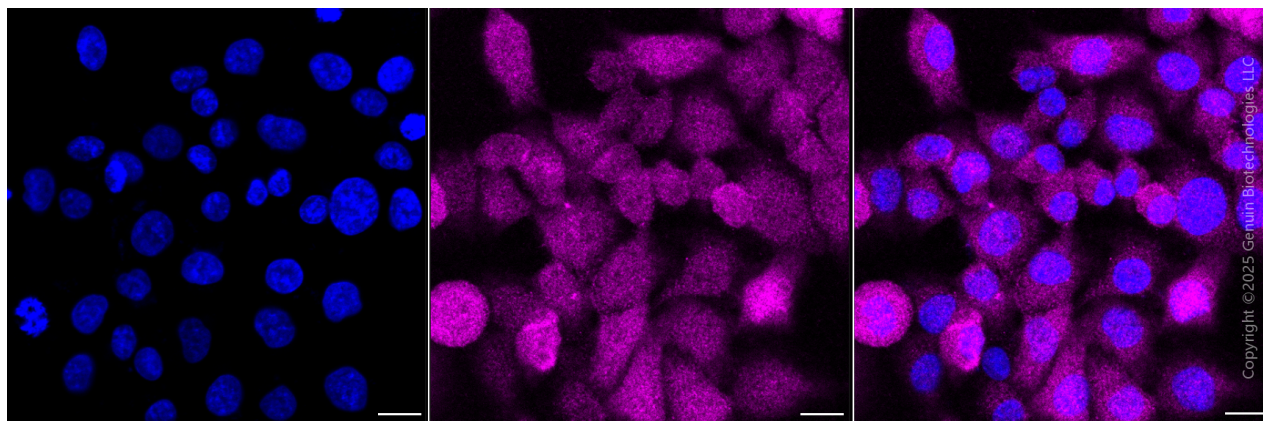
### SUPPORT

SUPPORT@GENUINBIOTECH.COM  
TEL: +1-540-855-7041

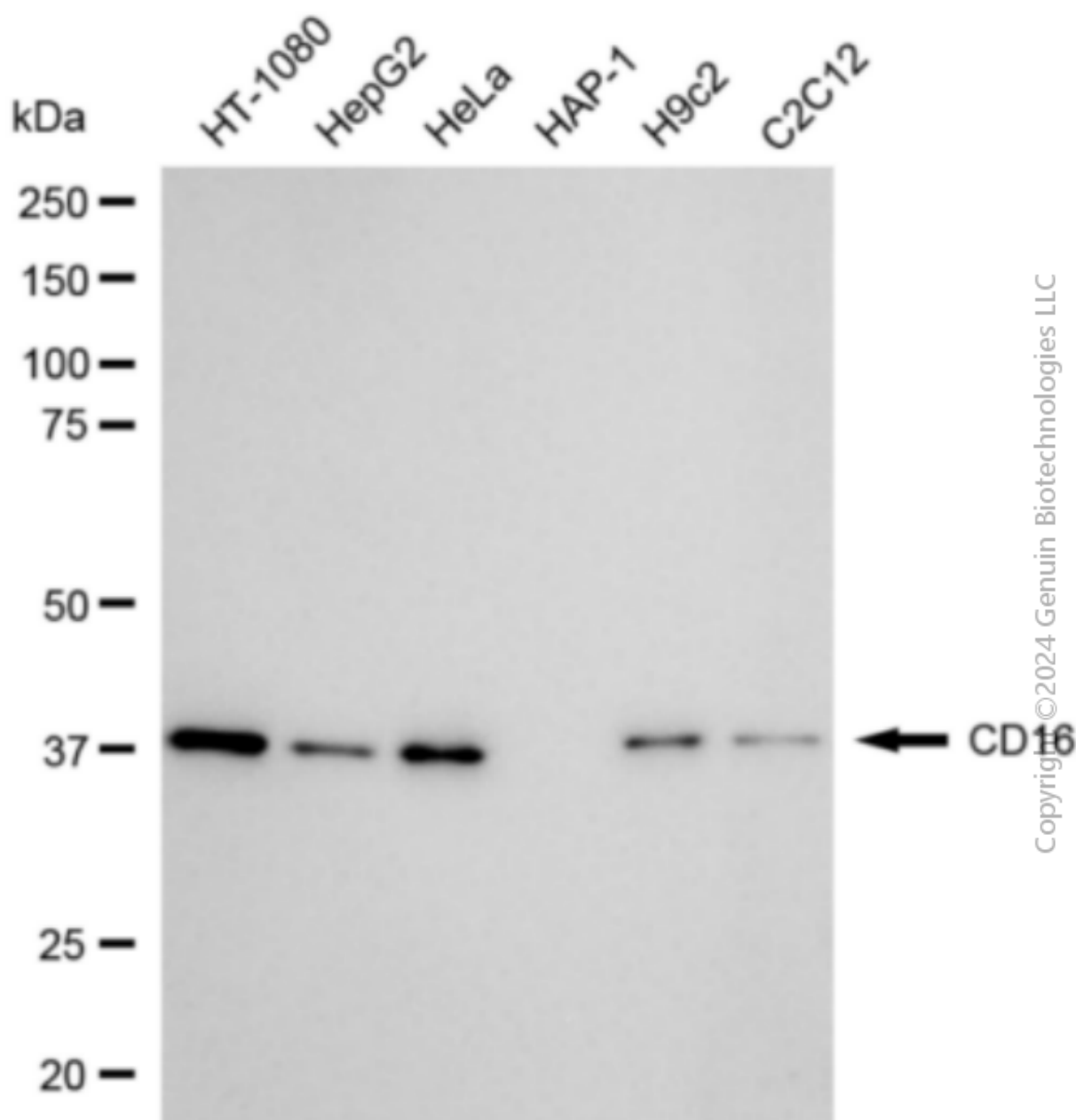
### ORDERS

SALES@GENUINBIOTECH.COM  
FAX: +1-540-855-7041

[WWW.GENUINBIOTECH.COM](http://WWW.GENUINBIOTECH.COM)



Immunocytochemical staining of HT-1080 cells with anti-CD16 antibody(Cat#3048, 1:1,000) . Nuclei were stained blue with DAPI; CD16 was stained magenta with Alexa Fluor® 647. Images were taken using Leica stellaris 5. Protein abundance based on laser Intensity and smart gain: Medium. Scale bar, 20  $\mu$ m.



Western blotting analysis using anti-CD16 antibody (Cat#3048). Total cell lysates (30 µg) from various cell lines were loaded and separated by SDS-PAGE. The blot was incubated with anti-CD16 antibody (Cat#3048, 1:5,000) and HRP-conjugated goat anti-rabbit secondary antibody (Cat#201, 1:20,000) respectively. Image was developed using FeQ™ ECL Substrate Kit (Cat#226).