

Anti-Neuregulin 3 Recombinant Rabbit Monoclonal Antibody



Catalog #: 3049

Aliases

NRG3; Neuregulin 3; Pro-Neuregulin-3, Membrane-Bound Isoform; Pro-NRG3; Neuregulin-3-Like Polypeptide; HRG3

Background

Gene Name: NRG3

NCBI Gene Entry: [10718](#)

UniProt Entry: [P56975](#)

Application Information

Molecular Weight: Predicted, 78 kDa; observed, 50 kDa

Clonality: Rabbit monoclonal antibody

Clone ID: 24GB3810

Species Reactivity: Human, mouse, rat

Applications Tested: Western blotting (WB), flow cytometry (FCM), immunocytochemistry (IC)

Immunogen

A synthesized peptide derived from human NRG3

Isotype

Rabbit IgG

Storage Buffer

Supplied in PBS (pH 7.4) containing 50% glycerol, and 0.02% sodium azide.

Storage

Store at -20 °C for one year.

Recommended Dilutions

Western Blotting (WB): 1:1,000-1:5,000

Flow Cytometry (FCM): 1:2,000

Immunocytochemistry (IC): 1:100-1:1,000

Note: This product is for research use only.

Validation Data

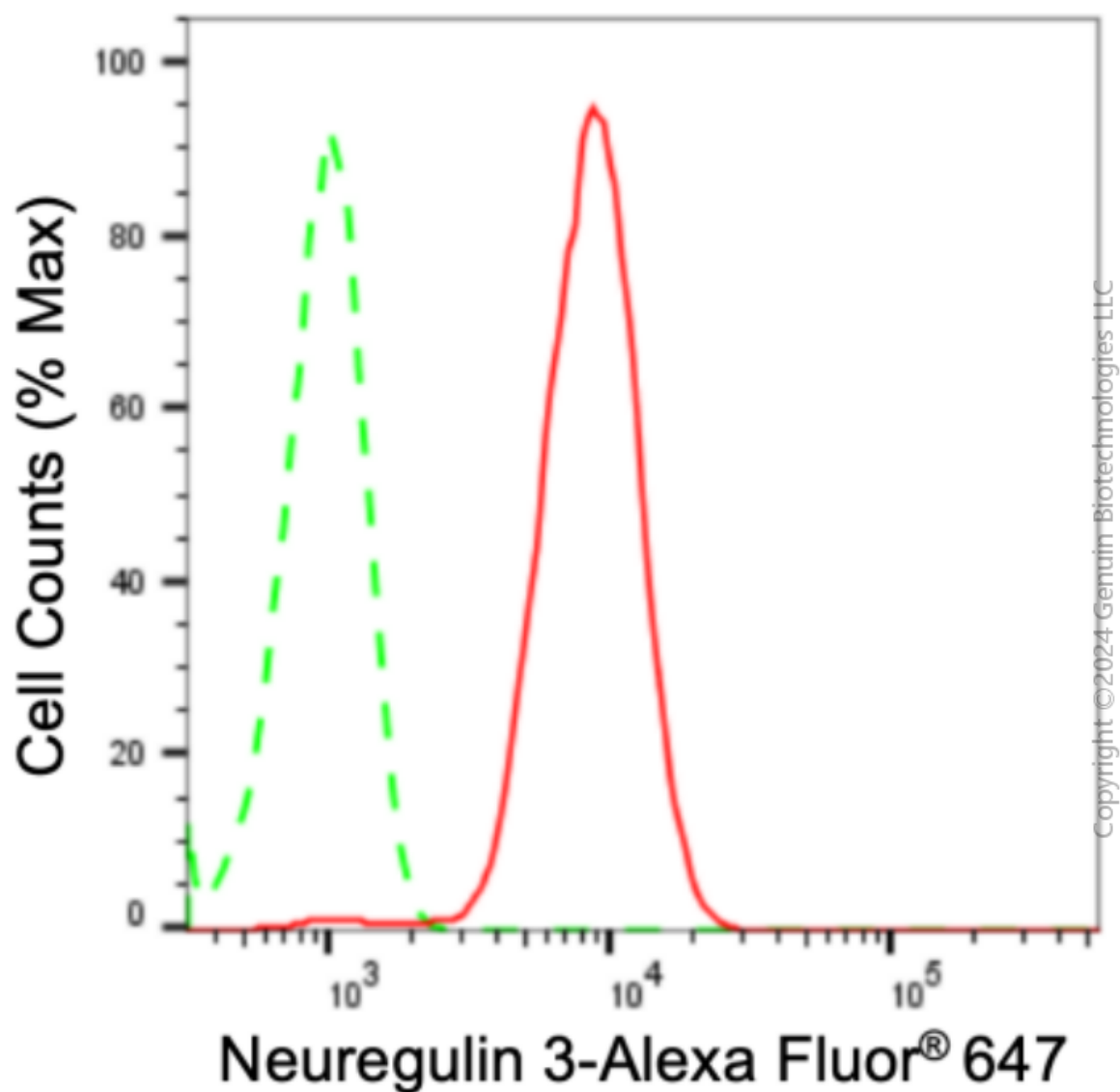
SUPPORT

SUPPORT@GENUINBIOTECH.COM
TEL: +1-540-855-7041

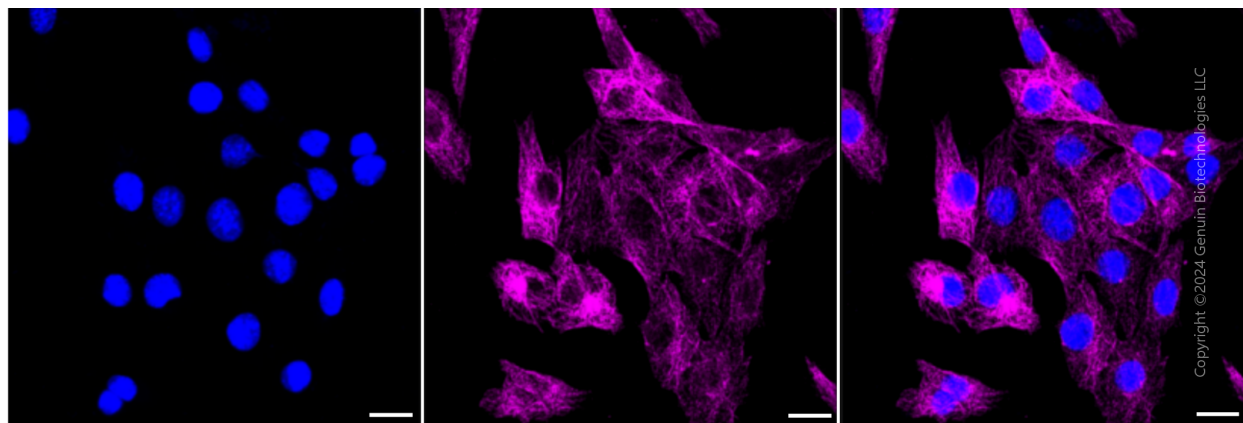
ORDERS

SALES@GENUINBIOTECH.COM
FAX: +1-540-855-7041

WWW.GENUINBIOTECH.COM



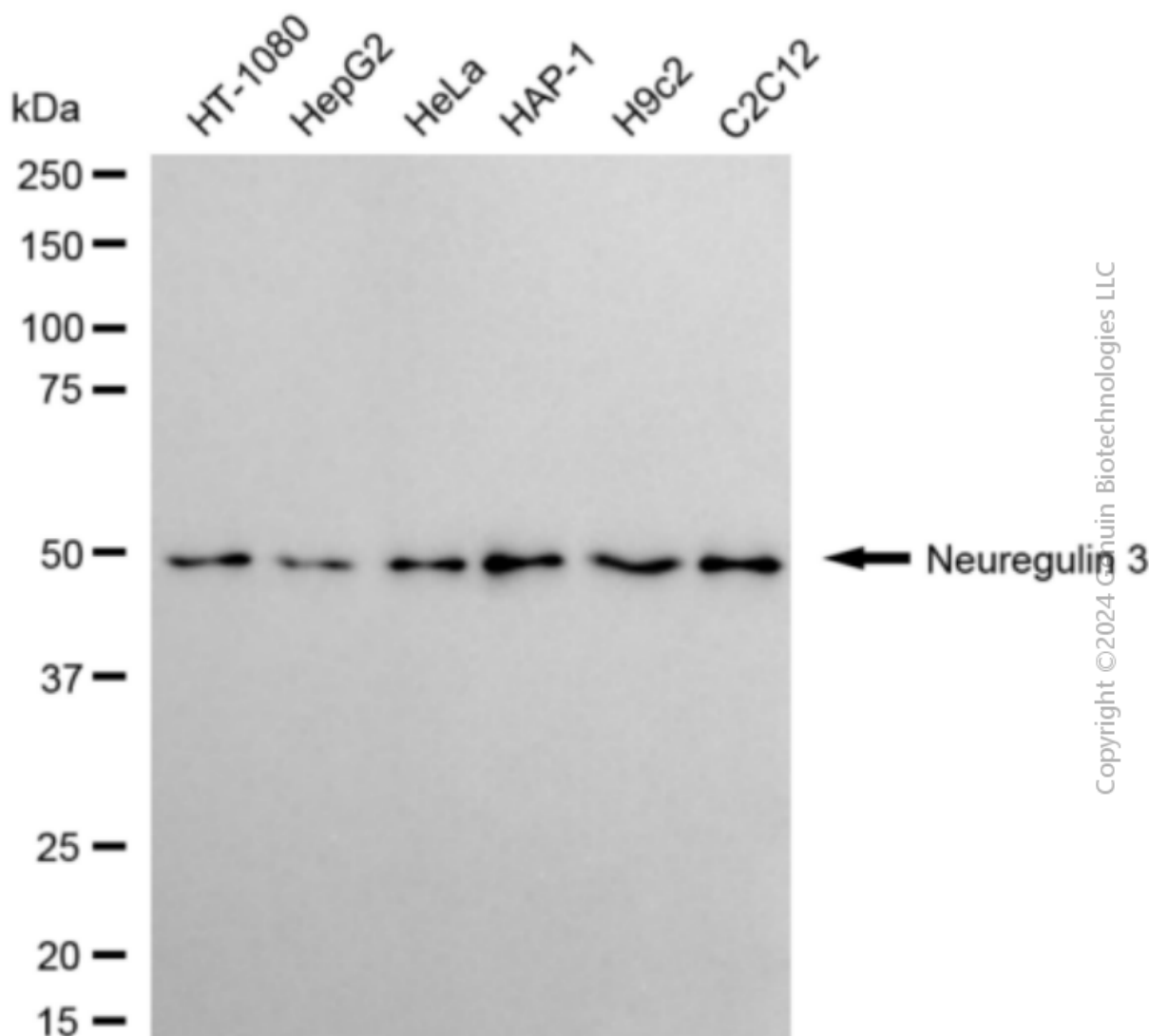
Flow cytometric analysis of Neuregulin 3 expression in C2C12 cells using anti-Neuregulin 3 antibody (Cat#3049, 1:2,000). Green, isotype control; red, Neuregulin 3.



Anti-Neuregulin 3 Recombinant Rabbit Monoclonal Antibody

PAGE 3

Immunocytochemical staining of C2C12 cells with anti-Neuregulin 3 antibody (Cat#3049, 1:1,000). Nuclei were stained blue with DAPI; Neuregulin 3 was stained magenta with Alexa Fluor® 647. Images were taken using leica stellaris 5. Protein abundance based on laser intensity and smart gain: Medium. Scale bar: 20 μ m



Western blotting analysis using anti-Neuregulin 3 antibody (Cat#3049). Total cell lysates (30 μ g) from various cell lines were loaded and separated by SDS-PAGE. The blot was incubated with anti-Neuregulin 3 antibody (Cat#3049, 1:5,000) and HRP-conjugated goat anti-rabbit secondary antibody (Cat#201, 1:20,000) respectively. Image was developed using FeQ™ ECL Substrate Kit (Cat#226).

SUPPORT

SUPPORT@GENUINBIOTECH.COM
TEL: +1-540-855-7041

ORDERS

SALES@GENUINBIOTECH.COM
FAX: +1-540-855-7041

WWW.GENUINBIOTECH.COM