

Anti-Kinesin Associated Protein 3 Recombinant Rabbit Monoclonal Antibody



Catalog #: 3051

Aliases

KIFAP3; Kinesin Associated Protein 3; SMAP; KAP3; Kinesin-Associated Protein 3; KAP-1; FLA3; Smg GDS-Associated Protein; KAP-3; Small G Protein GDP Dissociation Stimulator; DJ190I16.1; Smg GDS; Smg-GDS; KIF3AP

Background

Gene Name: KIFAP3

NCBI Gene Entry: [22920](#)

UniProt Entry: [Q92845](#)

Application Information

Molecular Weight: Predicted, 91 kDa; observed, 100 kDa

Clonality: Rabbit monoclonal antibody

Clone ID: 24GB3820

Species Reactivity: Human, mouse, rat

Applications Tested: Western blotting (WB), immunocytochemistry (IC), flow cytometry (FCM)

Immunogen

A synthesized peptide derived from human KIFAP3

Isotype

Rabbit IgG

Storage Buffer

Supplied in PBS (pH 7.4) containing 50% glycerol, and 0.02% sodium azide.

Storage

Store at -20 °C for one year.

Recommended Dilutions

Western Blotting (WB): 1:1,000-1:5,000

Immunocytochemistry (IC): 1:100-1:1,000

Flow Cytometry (FCM): 1:2,000

Note: This product is for research use only.

SUPPORT

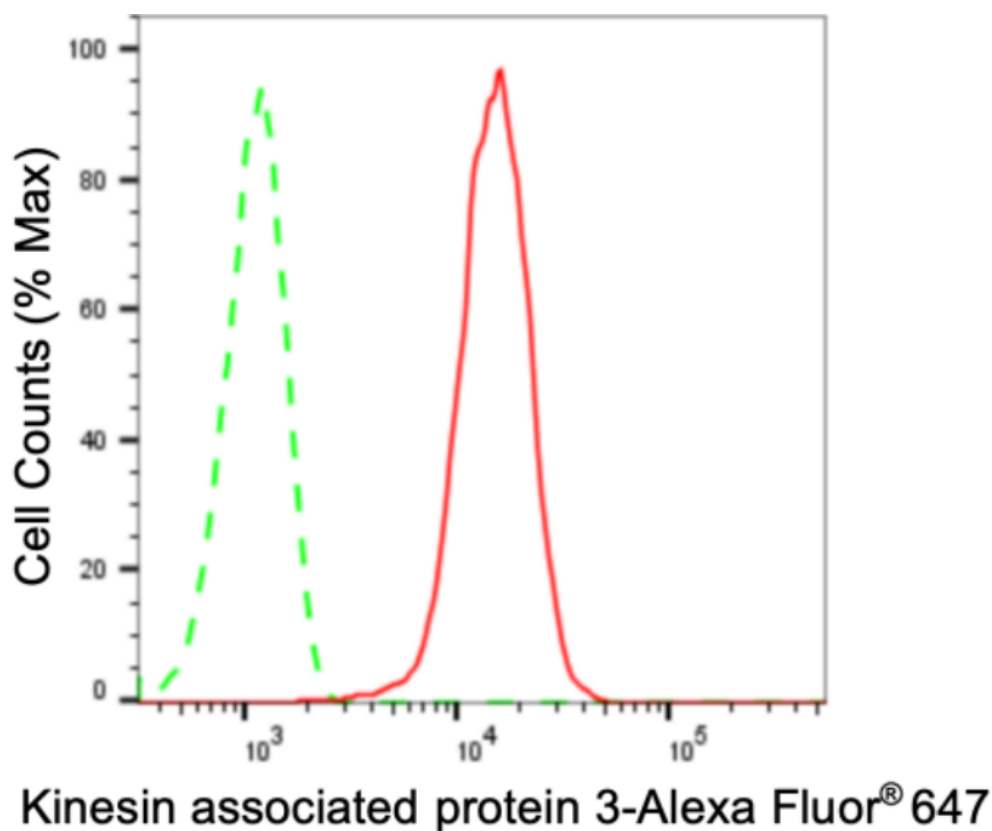
SUPPORT@GENUINBIOTECH.COM
TEL: +1-540-855-7041

ORDERS

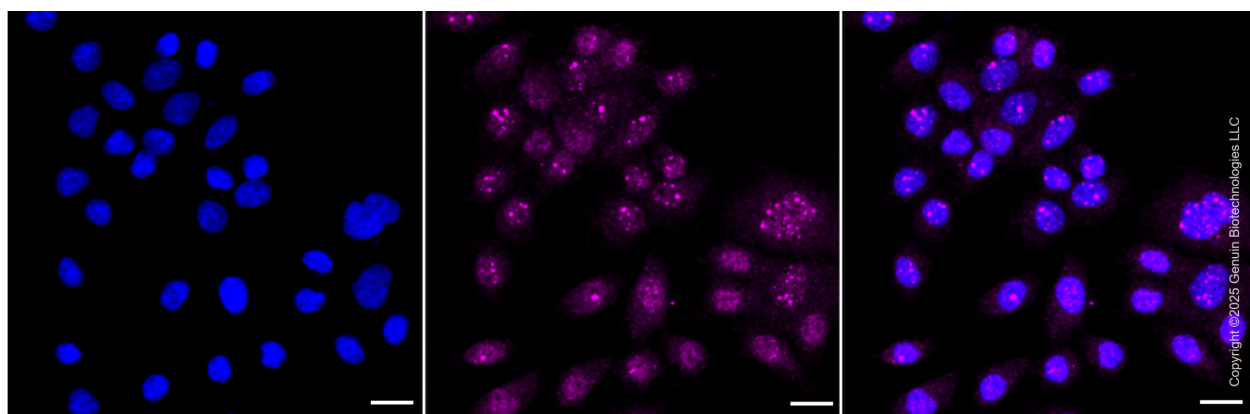
SALES@GENUINBIOTECH.COM
FAX: +1-540-855-7041

WWW.GENUINBIOTECH.COM

Validation Data



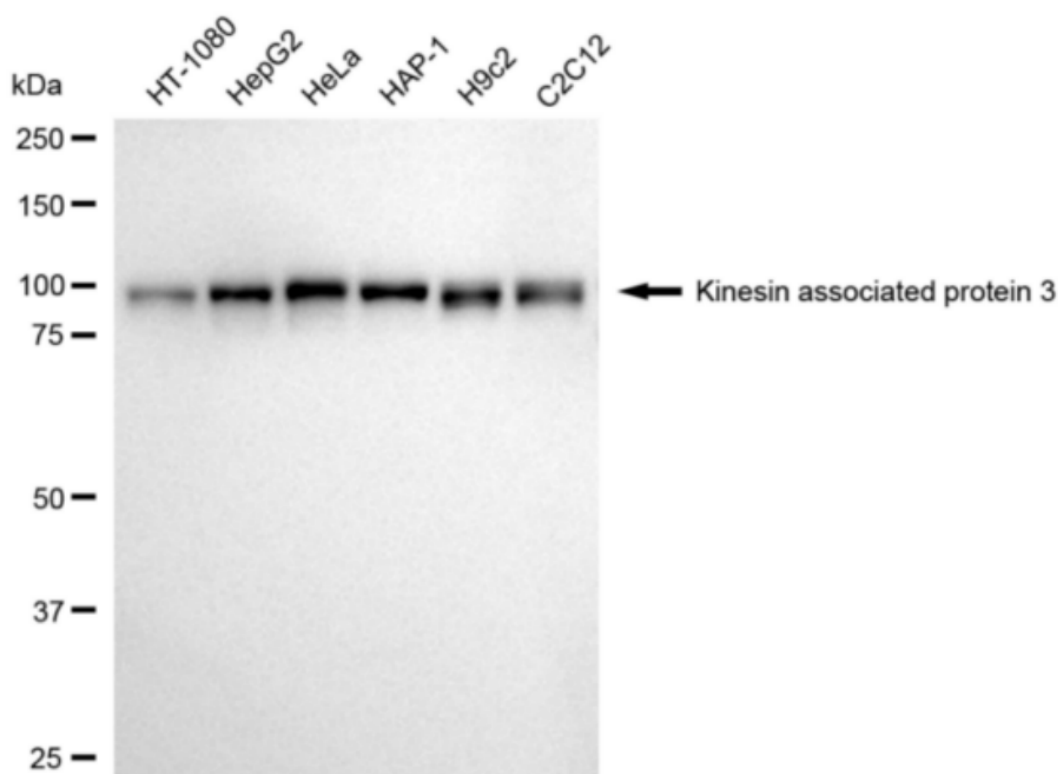
Flow cytometric analysis of Kinesin associated protein 3 expression in HepG2 cells using anti-Kinesin associated protein 3 antibody (Cat#3051, 1:2,000). Green, isotype control; red, Kinesin associated protein 3.



Immunocytochemical staining of HepG2 cells with anti-Kinesin associated protein 3 antibody (Cat#3051, 1:1,000). Nuclei were stained blue with DAPI; Kinesin associated protein 3 was stained magenta with Alexa Fluor® 647. Images were taken using Leica stellaris 5. Protein abundance based on laser Intensity and smart gain: Medium. Scale bar: 20 µm.

Anti-Kinesin Associated Protein 3 Recombinant Rabbit Monoclonal Antibody

PAGE 3



Western blotting analysis using anti-Kinesin associated protein 3 antibody (Cat#3051). Total cell lysates (30 μ g) from various cell lines were loaded and separated by SDS-PAGE. The blot was incubated with anti-Kinesin associated protein 3 antibody (Cat#3051, 1:5,000) and HRP-conjugated goat anti-rabbit secondary antibody (Cat#201, 1:20,000) respectively. Image was developed using FeQ™ ECL Substrate Kit (Cat#226).

SUPPORT

SUPPORT@GENUINBIOTECH.COM
TEL: +1-540-855-7041

ORDERS

SALES@GENUINBIOTECH.COM
FAX: +1-540-855-7041

WWW.GENUINBIOTECH.COM