

# Anti-EEF1G Recombinant Rabbit Monoclonal Antibody



**Catalog #: 3052**

## Aliases

EEF1G; Eukaryotic Translation Elongation Factor 1 Gamma; EF1G; Elongation Factor 1-Gamma; EEF-1B Gamma; EF-1-Gamma; Translation Elongation Factor EEF-1 Gamma Chain; Pancreatic Tumor-Related Protein; PRO1608; GIG35

## Background

Gene Name: EEF1G

NCBI Gene Entry: [1937](#)

UniProt Entry: [P26641](#)

## Application Information

Molecular Weight: Predicted, 50 kDa; observed, 48 kDa

Clonality: Rabbit monoclonal antibody

Clone ID: 24GB3825

Species Reactivity: Human, mouse, rat

Applications Tested: Western blotting (WB), flow cytometry (FCM), immunocytochemistry (IC)

## Immunogen

A synthesized peptide derived from human EEF1G

## Isotype

Rabbit IgG

## Storage Buffer

Supplied in PBS (pH 7.4) containing 50% glycerol, and 0.02% sodium azide.

## Storage

Store at -20 °C for one year.

## Recommended Dilutions

Western Blotting (WB): 1:1,000-1:5,000

Flow Cytometry (FCM): 1:2,000

Immunocytochemistry (IC): 1:100-1:1,000

**Note:** This product is for research use only.

---

### SUPPORT

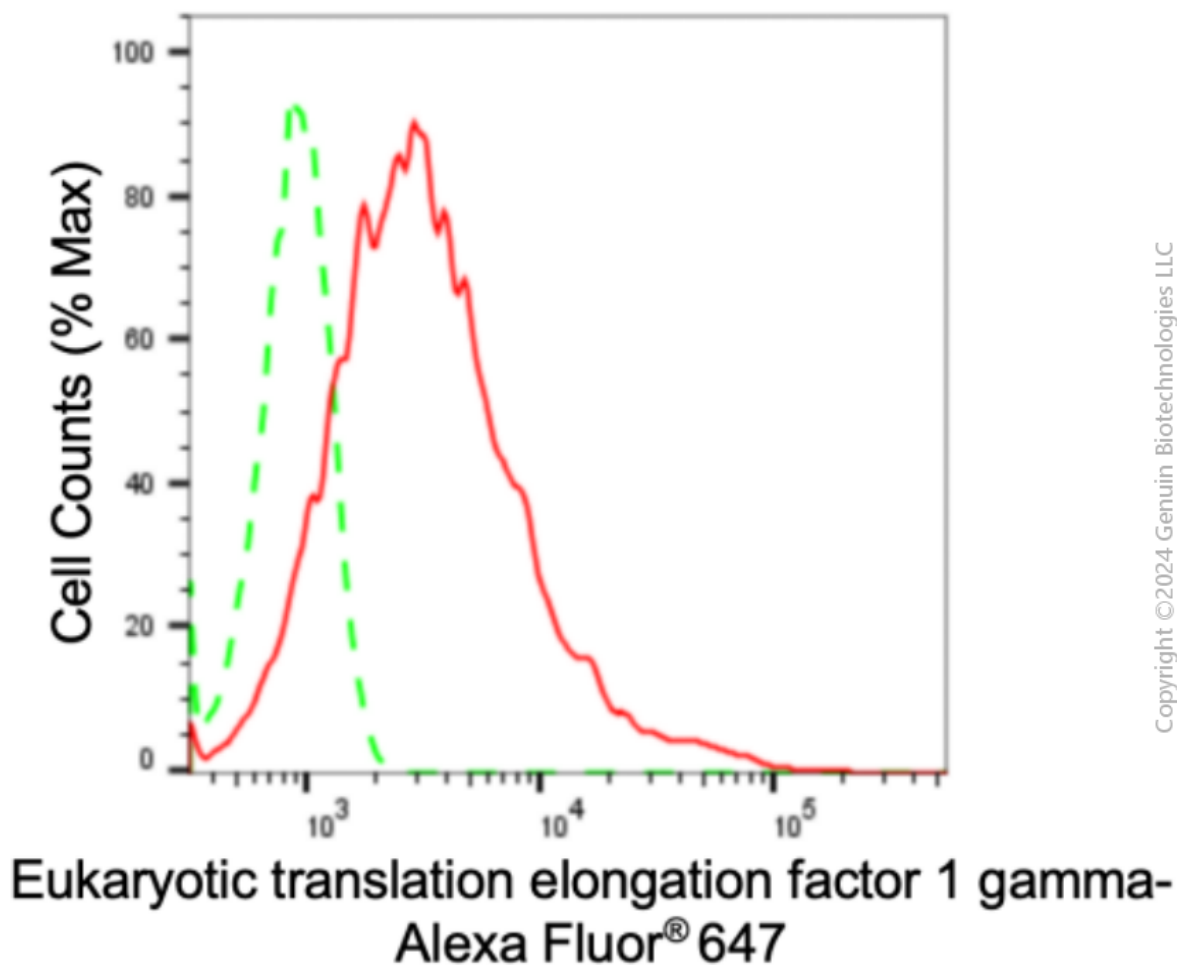
SUPPORT@GENUINBIOTECH.COM  
TEL: +1-540-855-7041

### ORDERS

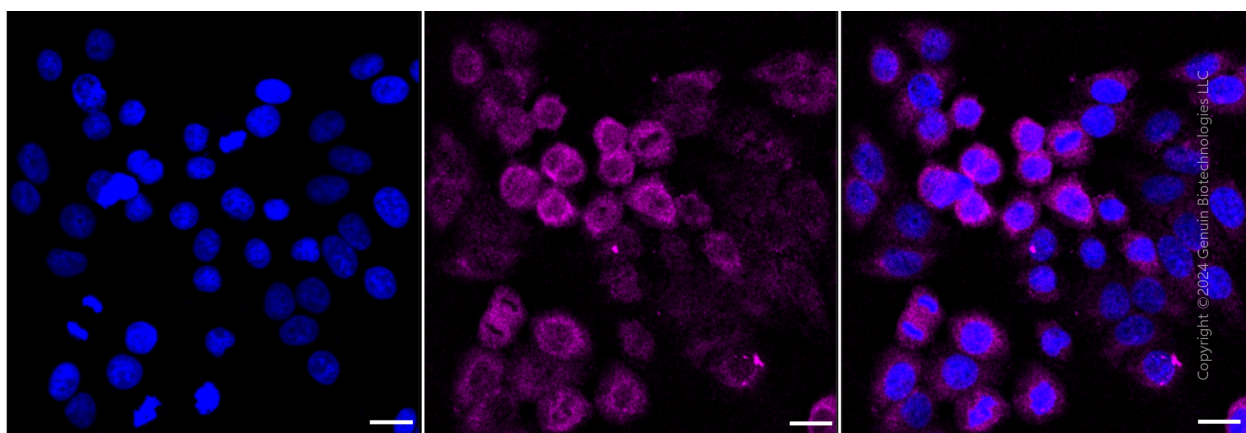
SALES@GENUINBIOTECH.COM  
FAX: +1-540-855-7041

[WWW.GENUINBIOTECH.COM](http://WWW.GENUINBIOTECH.COM)

## Validation Data



Flow cytometric analysis of Eukaryotic translation elongation factor 1 gamma expression in HepG2 cells using anti-Eukaryotic translation elongation factor 1 gamma antibody (Cat#3052, 1:2,000). Green, isotype control; red, Eukaryotic translation elongation factor 1 gamma.



Immunocytochemical staining of HepG2 cells with anti-Eukaryotic translation elongation factor 1 gamma antibody (Cat#3052, 1:1,000). Nuclei were stained blue with DAPI; Eukaryotic translation elongation factor 1 gamma was stained red.

### SUPPORT

SUPPORT@GENUINBIOTECH.COM  
TEL: +1-540-855-7041

### ORDERS

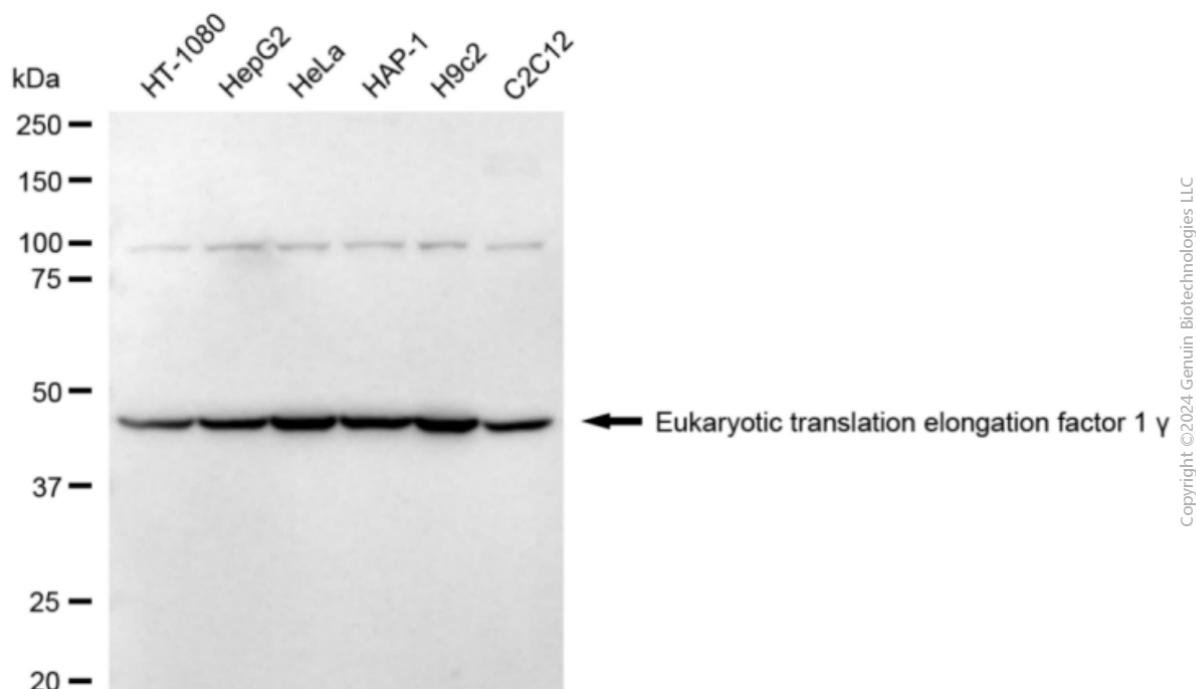
SALES@GENUINBIOTECH.COM  
FAX: +1-540-855-7041

[WWW.GENUINBIOTECH.COM](http://WWW.GENUINBIOTECH.COM)

## Anti-EEF1G Recombinant Rabbit Monoclonal Antibody

PAGE 3

translation elongation factor 1 gamma was stained magenta with Alexa Fluor® 647. Images were taken using Leica stellaris 5. Protein abundance based on laser Intensity and smart gain: Medium. Scale bar: 20 µm.



Western blotting analysis using anti-Eukaryotic translation elongation factor 1 gamma antibody (Cat#3052). Total cell lysates (30 µg) from various cell lines were loaded and separated by SDS-PAGE. The blot was incubated with anti-Eukaryotic translation elongation factor 1 gamma antibody (Cat#3052, 1:5,000) and HRP-conjugated goat anti-rabbit secondary antibody (Cat#201, 1:20,000) respectively. Image was developed using FeQ™ ECL Substrate Kit (Cat#226).

### SUPPORT

SUPPORT@GENUINBIOTECH.COM  
TEL: +1-540-855-7041

### ORDERS

SALES@GENUINBIOTECH.COM  
FAX: +1-540-855-7041

WWW.GENUINBIOTECH.COM