

Anti-HLA-F Recombinant Rabbit Monoclonal Antibody



Catalog #: 3053

Aliases

HLA-F; Major Histocompatibility Complex, Class I, F; HLA Class I Histocompatibility Antigen, Alpha Chain F; MHC Class I Antigen F; Leukocyte Antigen F; HLA F Antigen; HLA-5.4; CDA12; HLAF; Non-Classical MHC Class I Antigen; Nonclassical MHC Class I Antigen; HLA-CDA12

Background

Gene Name: HLA-F

NCBI Gene Entry: [3134](#)

UniProt Entry: [P30511](#)

Application Information

Molecular Weight: Predicted, 39 kDa; observed, 42 kDa

Clonality: Rabbit monoclonal antibody

Clone ID: 24GB3830

Species Reactivity: Human

Applications Tested: Western blotting (WB), immunocytochemistry (IC)

Immunogen

A synthesized peptide derived from human HLA F

Isotype

Rabbit IgG

Storage Buffer

Supplied in PBS (pH 7.4) containing 50% glycerol, and 0.02% sodium azide.

Storage

Store at -20 °C for one year.

Recommended Dilutions

Western Blotting (WB): 1:1,000-1:5,000

Immunocytochemistry (IC): 1:100-1:1,000

Note: This product is for research use only.

SUPPORT

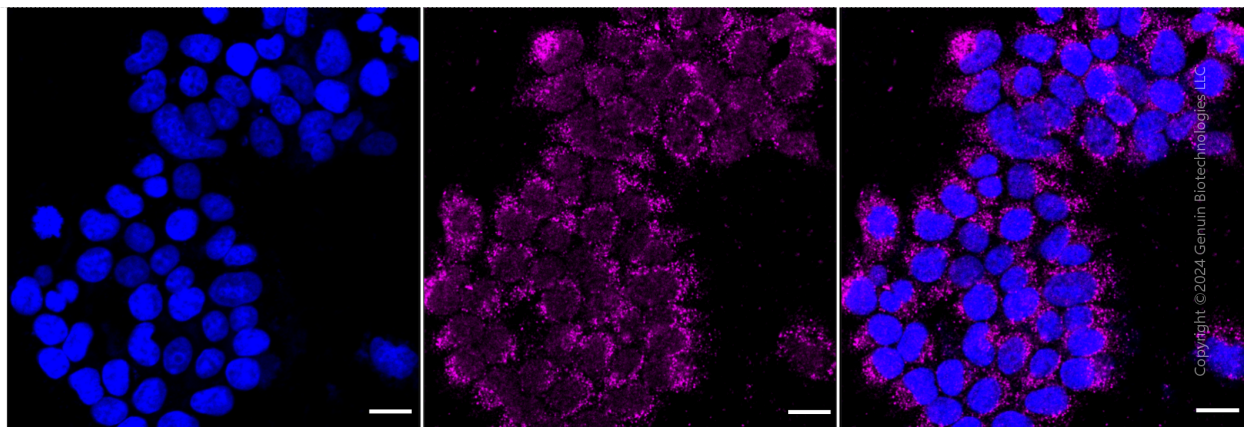
SUPPORT@GENUINBIOTECH.COM
TEL: +1-540-855-7041

ORDERS

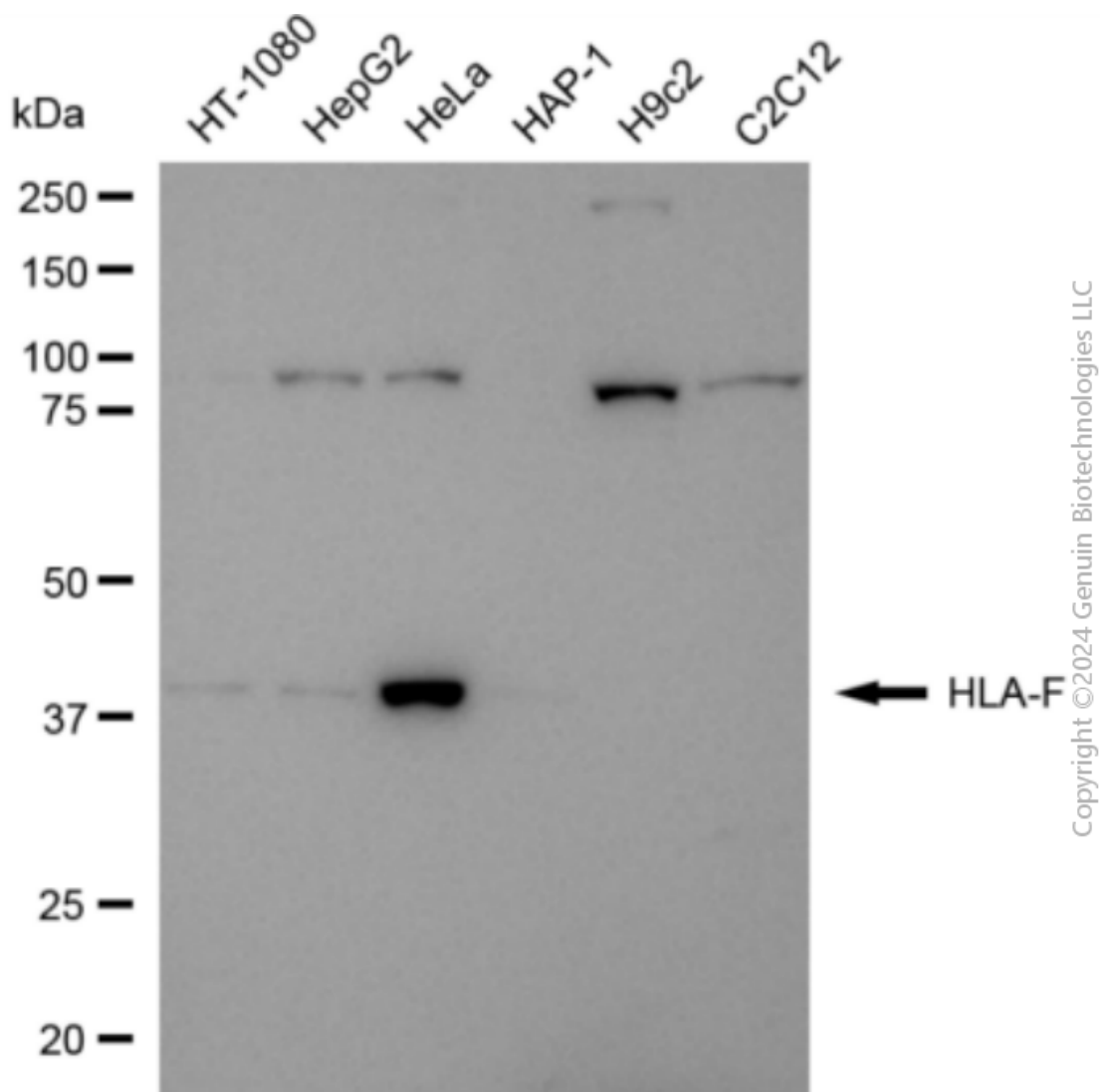
SALES@GENUINBIOTECH.COM
FAX: +1-540-855-7041

WWW.GENUINBIOTECH.COM

Validation Data



Immunocytochemical staining of HeLa cells with HLA-F antibody (Cat#3053, 1:1,000). Nuclei were stained blue with DAPI; HLA-F was stained magenta with Alexa Fluor® 647. Images were taken using Leica stellaris 5. Protein abundance based on laser Intensity and smart gain: Medium. Scale bar: 20 μ m.



Western blotting analysis using anti-HLA-F antibody (Cat#3053). Total cell lysates (30 µg) from various cell lines were loaded and separated by SDS-PAGE. The blot was incubated with anti-HLA-F antibody (Cat#3053, 1:5,000) and HRP-conjugated goat anti-rabbit secondary antibody (Cat#201, 1:20,000) respectively. Image was developed using FeQ™ ECL Substrate Kit (Cat#226).