

Anti-Ribosomal Protein L7a Recombinant Rabbit Monoclonal Antibody



Catalog #: 3056

Aliases

RPL7A; Ribosomal Protein L7a; SURF3; 60S Ribosomal Protein L7a; Surfeit Locus Protein 3; PLA-X Polypeptide; TRUP; L7A; EL8; Thyroid Hormone Receptor Uncoupling Protein; Large Ribosomal Subunit Protein EL8; Surfeit 3; SURF-3

Background

Gene Name: RPL7A

NCBI Gene Entry: [6130](#)

UniProt Entry: [P62424](#)

Application Information

Molecular Weight: Predicted, 30 kDa; observed, 30 kDa

Clonality: Rabbit monoclonal antibody

Clone ID: 24GB3845

Species Reactivity: Human, mouse, rat

Applications Tested: Western blotting (WB), immunocytochemistry (IC)

Immunogen

A synthesized peptide derived from human RPL7A

Isotype

Rabbit IgG

Storage Buffer

Supplied in PBS (pH 7.4) containing 50% glycerol, and 0.02% sodium azide.

Storage

Store at -20 °C for one year.

Recommended Dilutions

Western Blotting (WB): 1:1,000-1:5,000

Immunocytochemistry (IC): 1:100-1:1,000

Note: This product is for research use only.

Validation Data

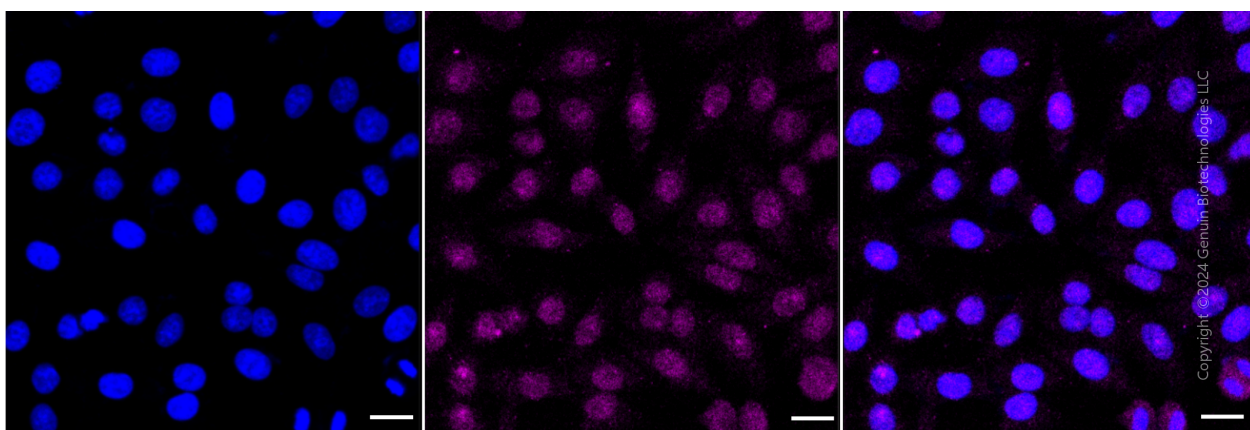
SUPPORT

SUPPORT@GENUINBIOTECH.COM
TEL: +1-540-855-7041

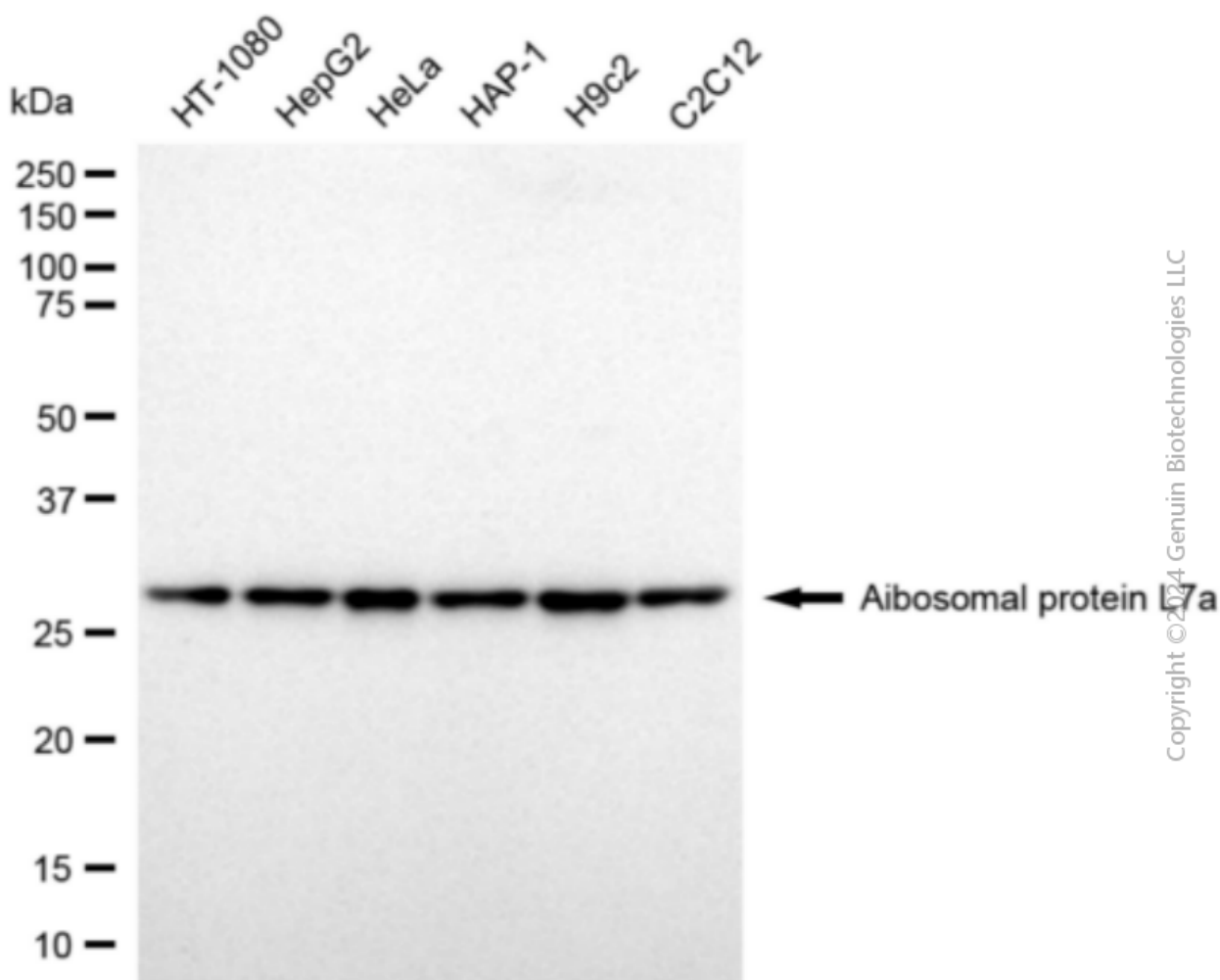
ORDERS

SALES@GENUINBIOTECH.COM
FAX: +1-540-855-7041

WWW.GENUINBIOTECH.COM



Immunocytochemical staining of HepG2 cells with anti-Aibosomal protein L7a antibody (Cat#3056, 1:1,000). Nuclei were stained blue with DAPI; Aibosomal protein L7a was stained magenta with Alexa Fluor® 647. Images were taken using Leica stellaris 5. Protein abundance based on laser Intensity and smart gain: Low. Scale bar: 20 µm.



Western blotting analysis using anti-aibosomal protein L7a antibody (Cat#3056). Total cell lysates

SUPPORT

SUPPORT@GENUINBIOTECH.COM
TEL: +1-540-855-7041

ORDERS

SALES@GENUINBIOTECH.COM
FAX: +1-540-855-7041

WWW.GENUINBIOTECH.COM

Anti-Ribosomal Protein L7a Recombinant Rabbit Monoclonal Antibody

PAGE 3

(30 µg) from various cell lines were loaded and separated by SDS-PAGE. The blot was incubated with anti-ribosomal protein L7a antibody (Cat#3056, 1:5,000) and HRP-conjugated goat anti-rabbit secondary antibody (Cat#201, 1:20,000) respectively. Image was developed using FeQ™ ECL Substrate Kit (Cat#226).

SUPPORT

SUPPORT@GENUINBIOTECH.COM
TEL: +1-540-855-7041

ORDERS

SALES@GENUINBIOTECH.COM
FAX: +1-540-855-7041

WWW.GENUINBIOTECH.COM