

# Anti-SNRPA1 Recombinant Rabbit Monoclonal Antibody



**Catalog #: 3058**

## Aliases

SNRPA1; Small Nuclear Ribonucleoprotein Polypeptide A'; Lea1; U2A'; U2 Small Nuclear Ribonucleoprotein A'; U2 SnRNP A'; U2 Small Nuclear Ribonucleoprotein Polypeptide A'

## Background

Gene Name: SNRPA1

NCBI Gene Entry: [6627](#)

UniProt Entry: [P09661](#)

## Application Information

Molecular Weight: Predicted, 28 kDa; observed, 28 kDa

Clonality: Rabbit monoclonal antibody

Clone ID: 24GB3855

Species Reactivity: Human, mouse, rat

Applications Tested: Western blotting (WB), immunocytochemistry (IC), flow cytometry (FCM)

## Immunogen

A synthesized peptide derived from human SNRPA1

## Isotype

Rabbit IgG

## Storage Buffer

Supplied in PBS (pH 7.4) containing 50% glycerol, and 0.02% sodium azide.

## Storage

Store at -20 °C for one year.

## Recommended Dilutions

Western Blotting (WB): 1:1,000-1:5,000

Immunocytochemistry (IC): 1:100-1:1,000

Flow Cytometry (FCM): 1:2,000

**Note:** This product is for research use only.

## Validation Data

---

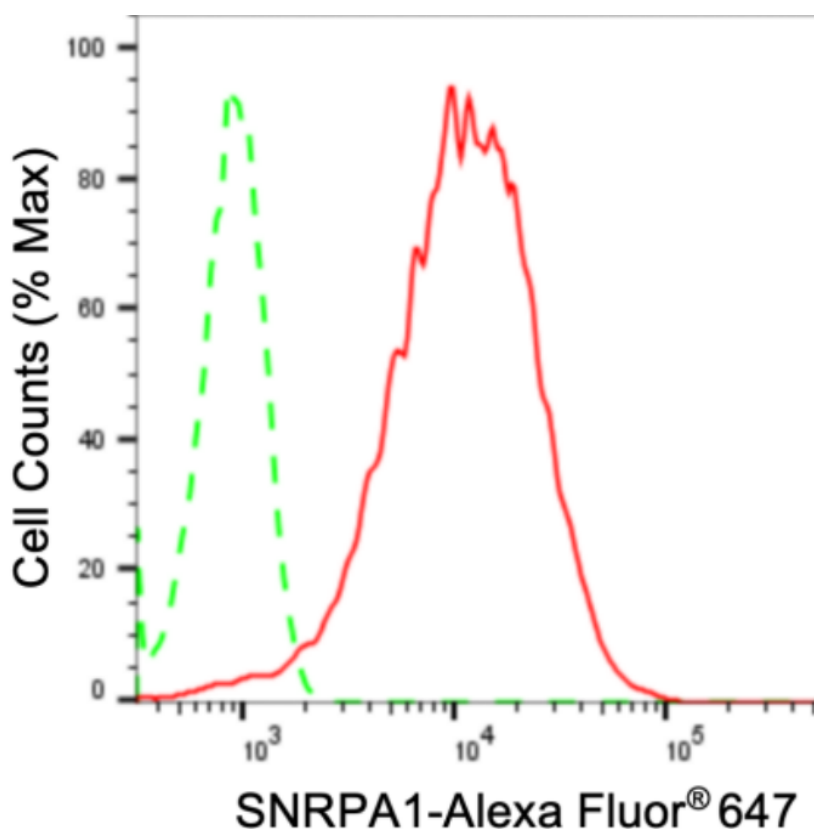
### SUPPORT

SUPPORT@GENUINBIOTECH.COM  
TEL: +1-540-855-7041

### ORDERS

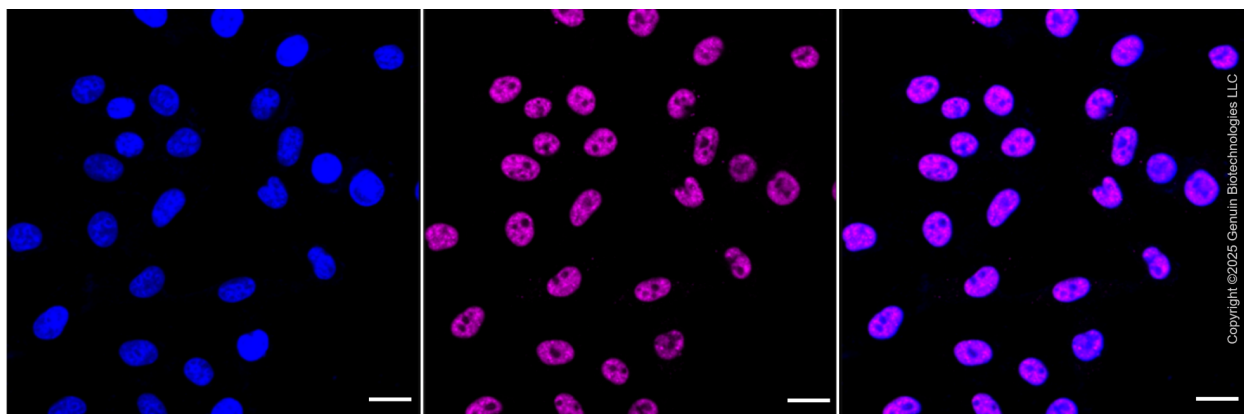
SALES@GENUINBIOTECH.COM  
FAX: +1-540-855-7041

[WWW.GENUINBIOTECH.COM](http://WWW.GENUINBIOTECH.COM)



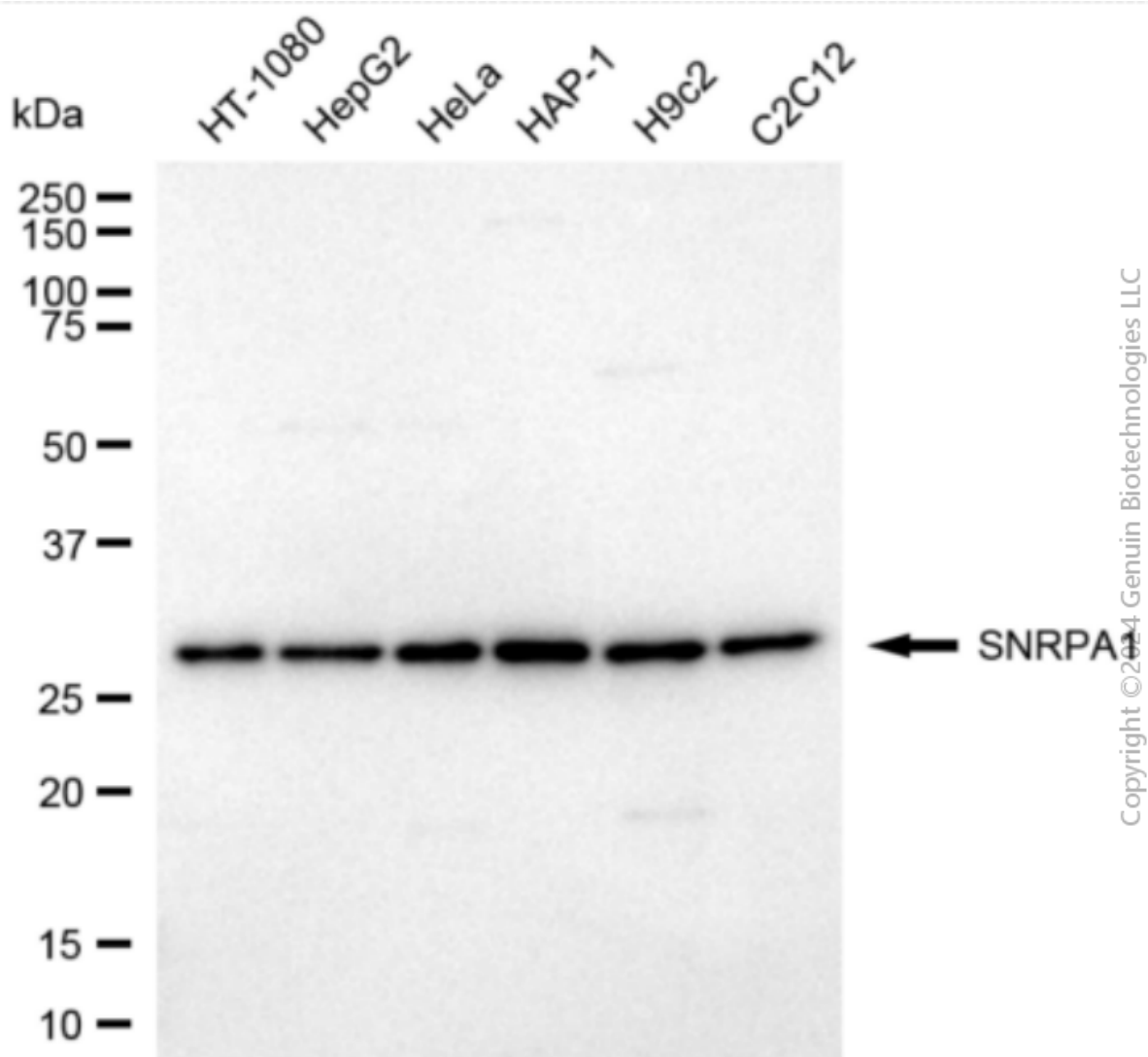
Copyright ©2024 Genuin Biotechnologies LLC

Flow cytometric analysis of SNRPA1 expression in HepG2 cells using anti-SNRPA1 antibody (Cat#3058, 1:2,000). Green, isotype control; red, SNRPA1.



Copyright ©2025 Genuin Biotechnologies LLC

Immunocytochemical staining of HepG2 cells with anti-SNRPA1 antibody (Cat#3058, 1:1,000). Nuclei were stained blue with DAPI; SNRPA1 was stained magenta with Alexa Fluor® 647. Images were taken using Leica stellaris 5. Protein abundance based on laser Intensity and smart gain: High. Scale bar: 20  $\mu$ m.



Western blotting analysis using anti-SNRPA1 antibody (Cat#3058). Total cell lysates (30 µg) from various cell lines were loaded and separated by SDS-PAGE. The blot was incubated with anti-SNRPA1 antibody (Cat#3058, 1:5,000) and HRP-conjugated goat anti-rabbit secondary antibody (Cat#201, 1:20,000) respectively. Image was developed using FeQ™ ECL Substrate Kit (Cat#226).