

# Anti-SBDS Ribosome Maturation Factor Recombinant Rabbit Monoclonal Antibody



**Catalog #: 3059**

## Aliases

SBDS; SBDS Ribosome Maturation Factor; CGI-97; SWDS; SDO1; SDS; SBDS, Ribosome Assembly Guanine Nucleotide Exchange Factor; Ribosome Maturation Protein SBDS; FLJ10917; Shwachman-Bodian-Diamond Syndrome Protein; Shwachman-Bodian-Diamond Syndrome

## Background

Gene Name: SBDS

NCBI Gene Entry: [51119](#)

UniProt Entry: [Q9Y3A5](#)

## Application Information

Molecular Weight: Predicted, 29 kDa; observed, 29 kDa

Clonality: Rabbit monoclonal antibody

Clone ID: 24GB3860

Species Reactivity: Human, mouse, rat

Applications Tested: Western blotting (WB), flow cytometry (FCM), immunocytochemistry (IC)

## Immunogen

A synthesized peptide derived from human SBDS

## Isotype

Rabbit IgG

## Storage Buffer

Supplied in PBS (pH 7.4) containing 50% glycerol, and 0.02% sodium azide.

## Storage

Store at -20 °C for one year.

## Recommended Dilutions

Western Blotting (WB): 1:1,000-1:5,000

Flow Cytometry (FCM): 1:2,000

Immunocytochemistry (IC): 1:100-1:1,000

**Note:** This product is for research use only.

---

### SUPPORT

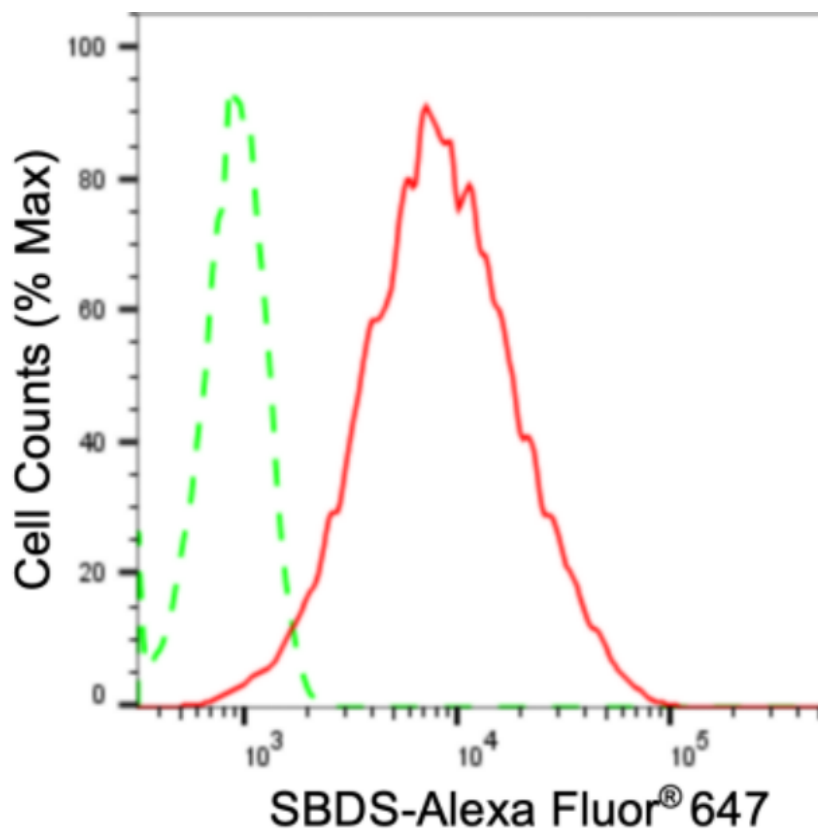
SUPPORT@GENUINBIOTECH.COM  
TEL: +1-540-855-7041

### ORDERS

SALES@GENUINBIOTECH.COM  
FAX: +1-540-855-7041

[WWW.GENUINBIOTECH.COM](http://WWW.GENUINBIOTECH.COM)

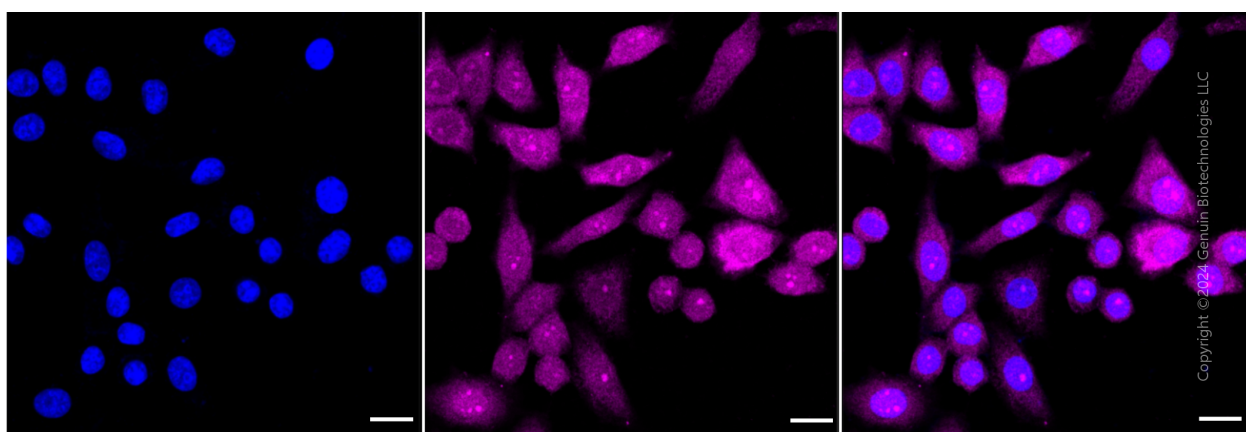
**Validation Data**



Copyright © 2024 Genuin Biotechnologies LLC

**Figure 2.** Flow cytometric analysis of SBDS expression in HepG2 cells using anti-SBDS antibody (Cat#3059, 1:2,000). Green, isotype control; red, SBDS.

Flow cytometric analysis of SBDS expression in HepG2 cells using anti-SBDS antibody (Cat#3059, 1:2,000). Green, isotype control; red, SBDS.



Copyright © 2024 Genuin Biotechnologies LLC

Immunocytochemical staining of HepG2 cells with anti-SBDS antibody (Cat#3059, 1:1,000). Nuclei were stained blue with DAPI; SBDS was stained magenta with Alexa Fluor® 647. Images were taken using Leica stellaris 5. Protein abundance based on laser Intensity and smart gain: High. Scale bar: 20  $\mu$ m.

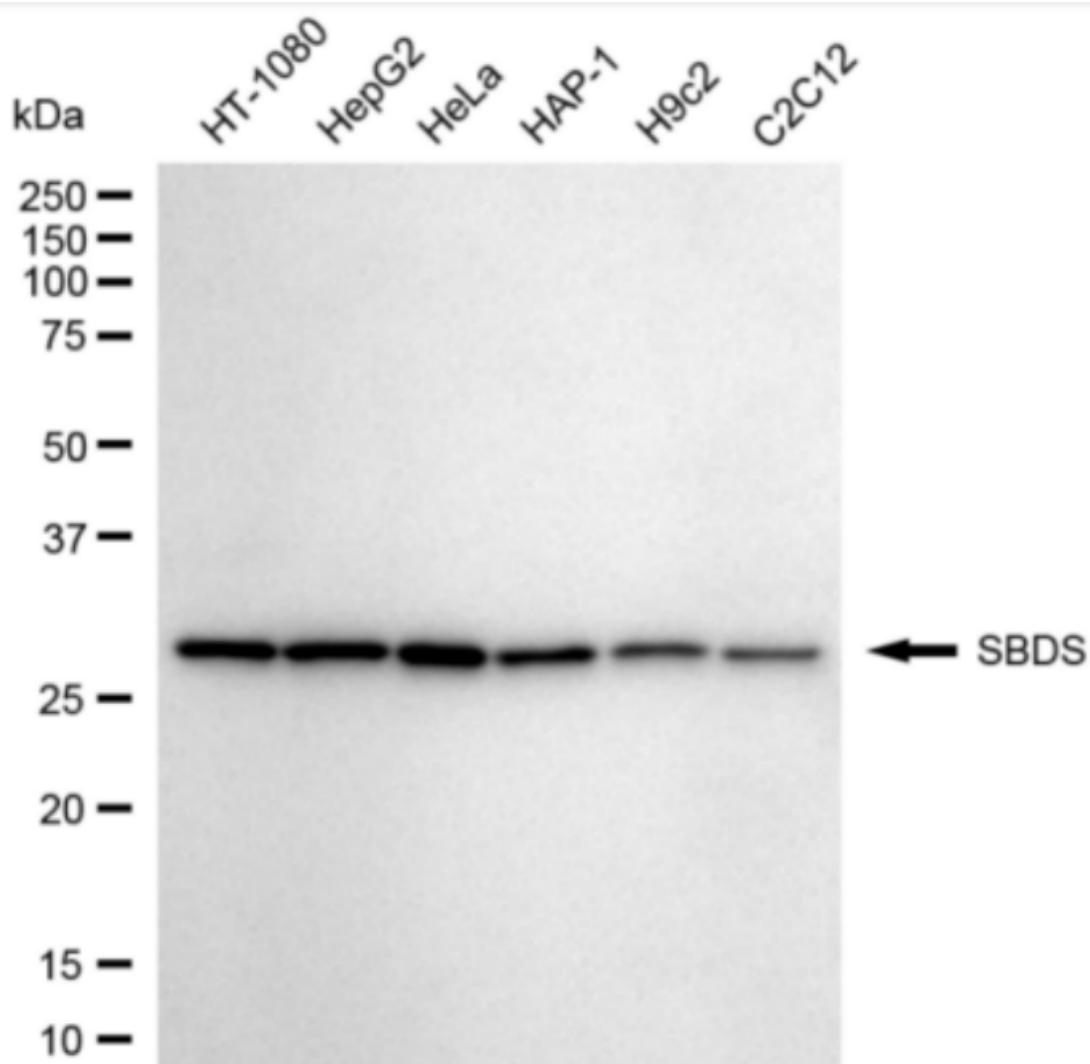
**SUPPORT**

SUPPORT@GENUINBIOTECH.COM  
TEL: +1-540-855-7041

**ORDERS**

SALES@GENUINBIOTECH.COM  
FAX: +1-540-855-7041

**WWW.GENUINBIOTECH.COM**



Copyright ©2024 Genuin Biotechnologies LLC

Western blotting analysis using anti-SBDS antibody (Cat#3059). Total cell lysates (30 µg) from various cell lines were loaded and separated by SDS-PAGE. The blot was incubated with anti-SBDS antibody (Cat#3059, 1:5,000) and HRP-conjugated goat anti-rabbit secondary antibody (Cat#201, 1:20,000) respectively. Image was developed using FeQ™ ECL Substrate Kit (Cat#226).