

Anti-Syndecan 3 Recombinant Rabbit Monoclonal Antibody



Catalog #: 3065

Aliases

SDC3; Syndecan 3; SYND3; N-Syndecan; Syndecan Proteoglycan 3; Syndecan-3; Syndecan 3 (N-Syndecan); Syndecan Neural Type; KIAA0468; SDCN

Background

Gene Name: SDC3

NCBI Gene Entry: [9672](#)

UniProt Entry: [O75056](#)

Application Information

Molecular Weight: Predicted, 45 kDa; observed, 60 kDa

Clonality: Rabbit monoclonal antibody

Clone ID: 24GB3890

Species Reactivity: Human, mouse, rat

Applications Tested: Western blotting (WB), flow cytometry (FCM), immunocytochemistry (IC)

Immunogen

A synthesized peptide derived from human Syndecan 3

Isotype

Rabbit IgG

Storage Buffer

Supplied in PBS (pH 7.4) containing 50% glycerol, and 0.02% sodium azide.

Storage

Store at -20 °C for one year.

Recommended Dilutions

Western Blotting (WB): 1:1,000-1:5,000

Flow Cytometry (FCM): 1:2,000

Immunocytochemistry (IC): 1:100-1:1,000

Note: This product is for research use only.

Validation Data

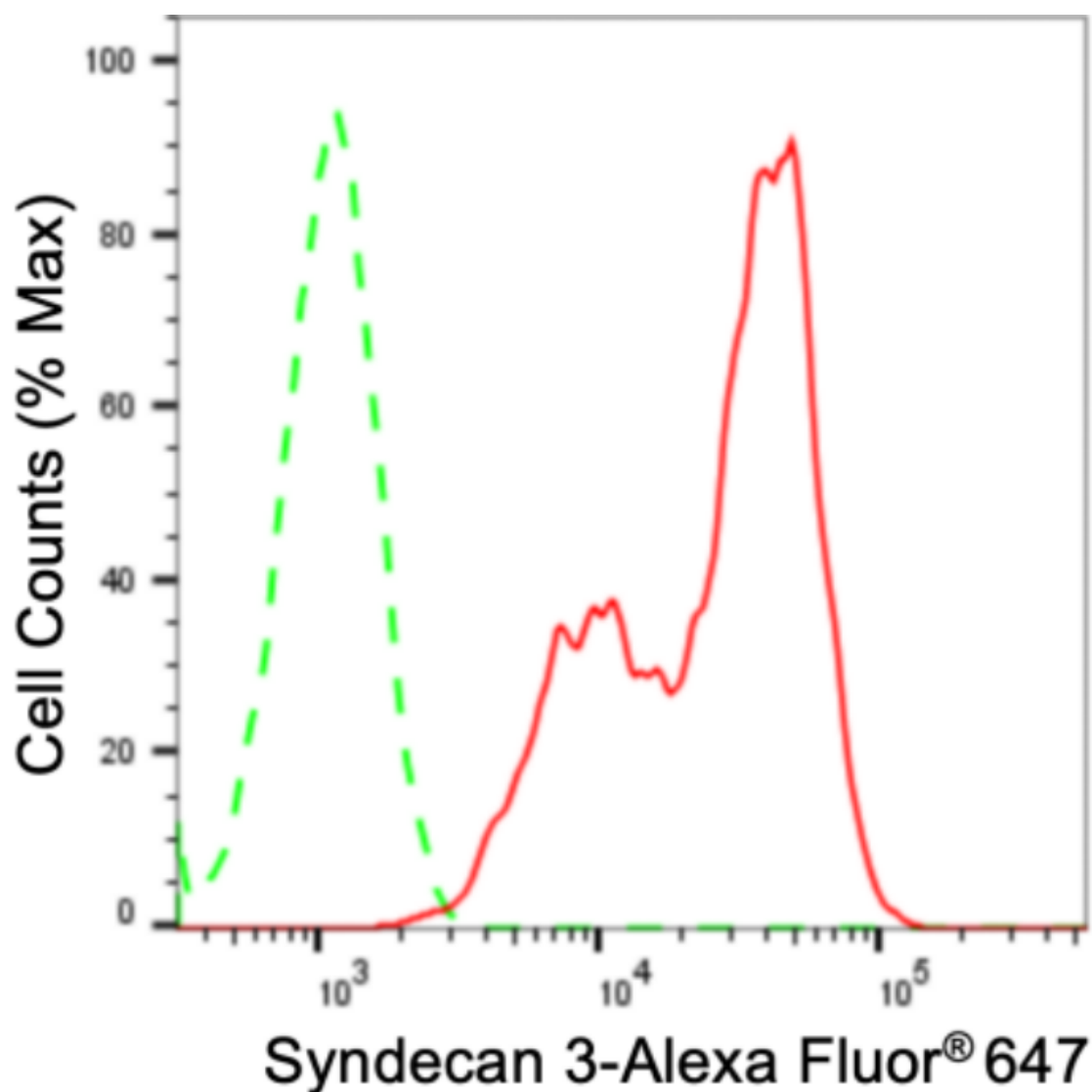
SUPPORT

SUPPORT@GENUINBIOTECH.COM
TEL: +1-540-855-7041

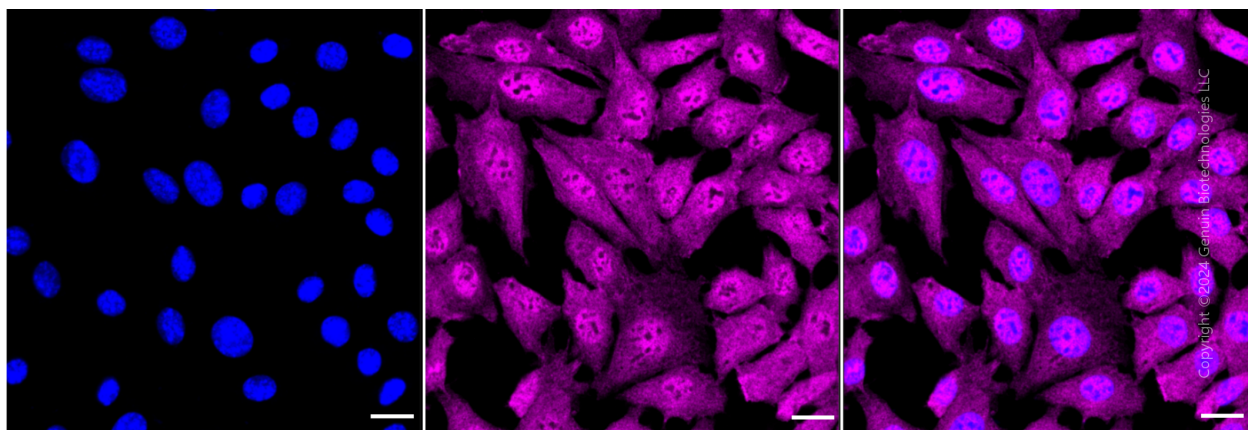
ORDERS

SALES@GENUINBIOTECH.COM
FAX: +1-540-855-7041

WWW.GENUINBIOTECH.COM



Flow cytometric analysis of syndecan 3 expression in C2C12 cells using anti-syndecan 3 antibody (Cat#3065, 1:2,000). Green, isotype control; red, syndecan 3.



Immunocytochemical staining of C2C12 cells with syndecan 3 antibody (Cat#3065, 1:1,000).

SUPPORT

SUPPORT@GENUINBIOTECH.COM
TEL: +1-540-855-7041

ORDERS

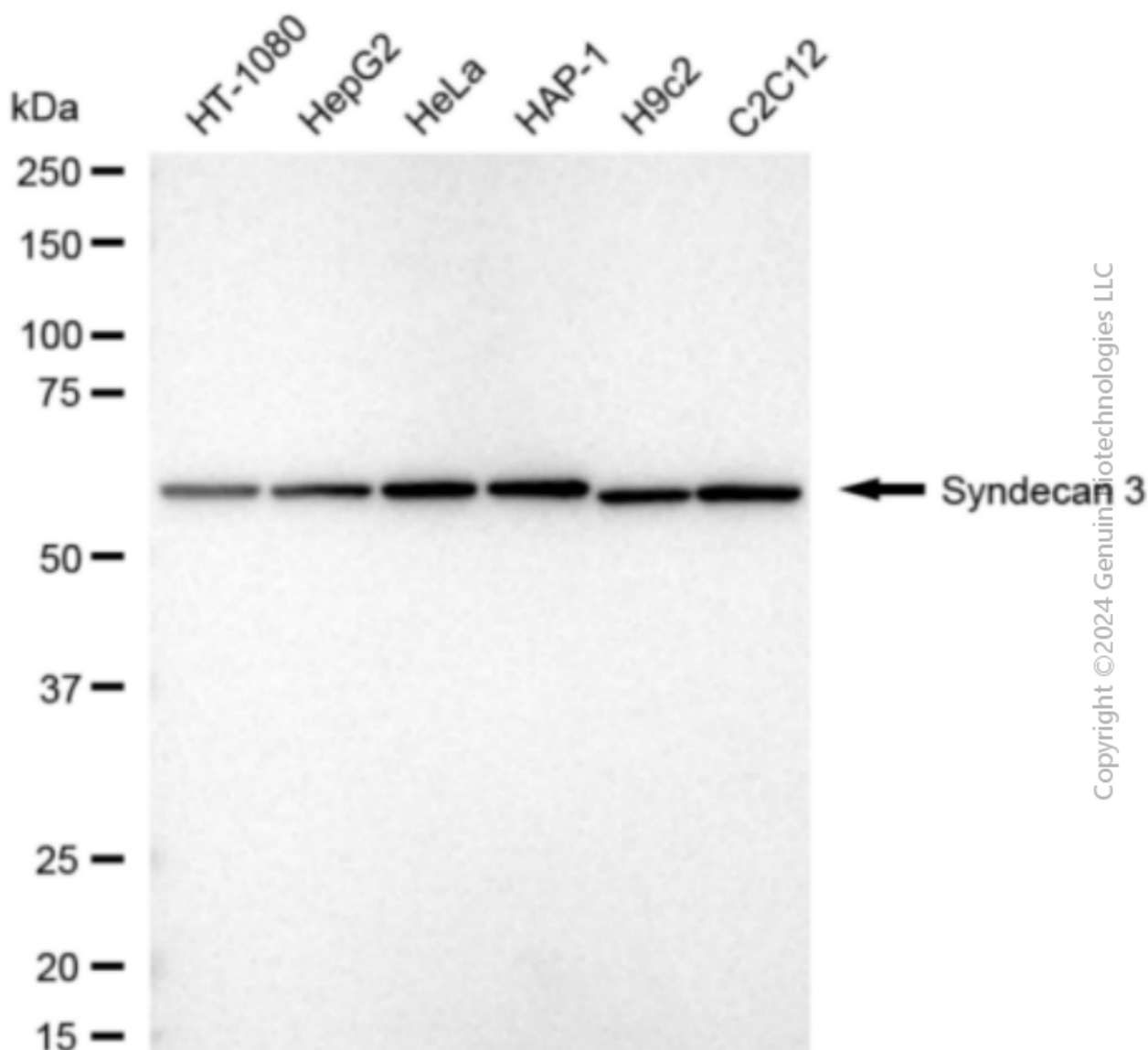
SALES@GENUINBIOTECH.COM
FAX: +1-540-855-7041

WWW.GENUINBIOTECH.COM

Anti-Syndecan 3 Recombinant Rabbit Monoclonal Antibody

PAGE 3

Nuclei were stained blue with DAPI; Syndecan 3 was stained magenta with Alexa Fluor® 647. Images were taken using Leica stellaris 5. Protein abundance based on laser Intensity and smart gain: High. Scale bar: 20 μ m.



Western blotting analysis using anti-syndecan 3 antibody (Cat#3065). Total cell lysates (30 μ g) from various cell lines were loaded and separated by SDS-PAGE. The blot was incubated with anti-syndecan 3 antibody (Cat#3065, 1:5,000) and HRP-conjugated goat anti-rabbit secondary antibody (Cat#201, 1:20,000) respectively. Image was developed using FeQ™ ECL Substrate Kit (Cat#226).

SUPPORT

SUPPORT@GENUINBIOTECH.COM
TEL: +1-540-855-7041

ORDERS

SALES@GENUINBIOTECH.COM
FAX: +1-540-855-7041

WWW.GENUINBIOTECH.COM