

# Anti-Ribosomal Protein L10a Recombinant Rabbit Monoclonal Antibody



**Catalog #: 3066**

## Aliases

RPL10A; Ribosomal Protein L10a; Csa-19; NEDD6; L10A; UL1; Neural Precursor Cell Expressed Developmentally Down-Regulated Protein 6; Large Ribosomal Subunit Protein UL1; 60S Ribosomal Protein L10a; NEDD-6; CSA-19; CSA19

## Background

Gene Name: RPL10A

NCBI Gene Entry: [4736](#)

UniProt Entry: [P62906](#)

## Application Information

Molecular Weight: Predicted, 25 kDa; observed, 25 kDa

Clonality: Rabbit monoclonal antibody

Clone ID: 24GB3895

Species Reactivity: Human, mouse, rat

Applications Tested: Western blotting (WB), immunocytochemistry (IC), flow cytometry (FCM)

## Immunogen

A synthesized peptide derived from human RPL10A

## Isotype

Rabbit IgG

## Storage Buffer

Supplied in PBS (pH 7.4) containing 50% glycerol, and 0.02% sodium azide.

## Storage

Store at -20 °C for one year.

## Recommended Dilutions

Western Blotting (WB): 1:1,000-1:5,000

Immunocytochemistry (IC): 1:100-1:1,000

Flow Cytometry (FCM): 1:2,000

**Note:** This product is for research use only.

---

### SUPPORT

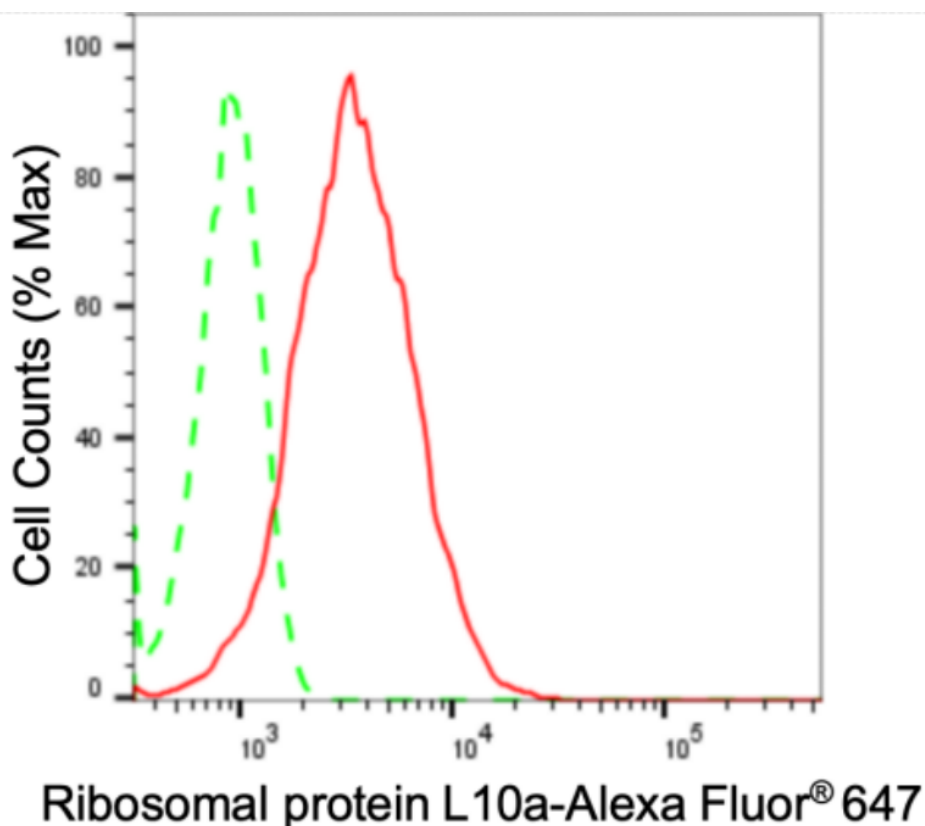
SUPPORT@GENUINBIOTECH.COM  
TEL: +1-540-855-7041

### ORDERS

SALES@GENUINBIOTECH.COM  
FAX: +1-540-855-7041

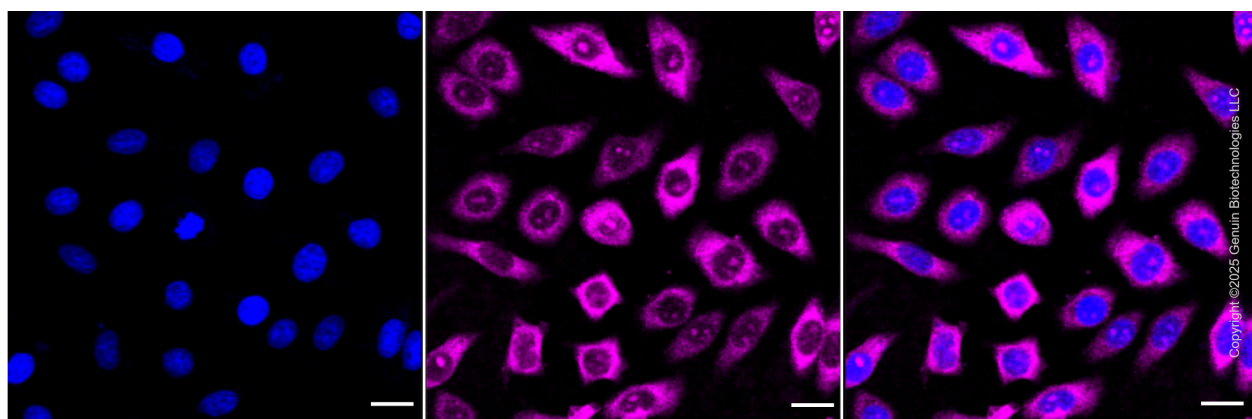
[WWW.GENUINBIOTECH.COM](http://WWW.GENUINBIOTECH.COM)

**Validation Data**



Copyright ©2024 Genuin Biotechnologies LLC

Flow cytometric analysis of ribosomal protein L10a expression in HepG2 cells using anti-ribosomal protein L10a antibody (Cat#3066, 1:2,000). Green, isotype control; red, ribosomal protein L10a.



Immunocytochemical staining of HepG2 cells with anti-Ribosomal protein L10a antibody (Cat#3066, 1:1,000). Nuclei were stained blue with DAPI; Ribosomal protein L10a was stained magenta with Alexa Fluor® 647. Images were taken using Leica stellaris 5. Protein abundance based on laser Intensity and smart gain: Medium. Scale bar: 20  $\mu$ m.

**SUPPORT**

SUPPORT@GENUINBIOTECH.COM  
TEL: +1-540-855-7041

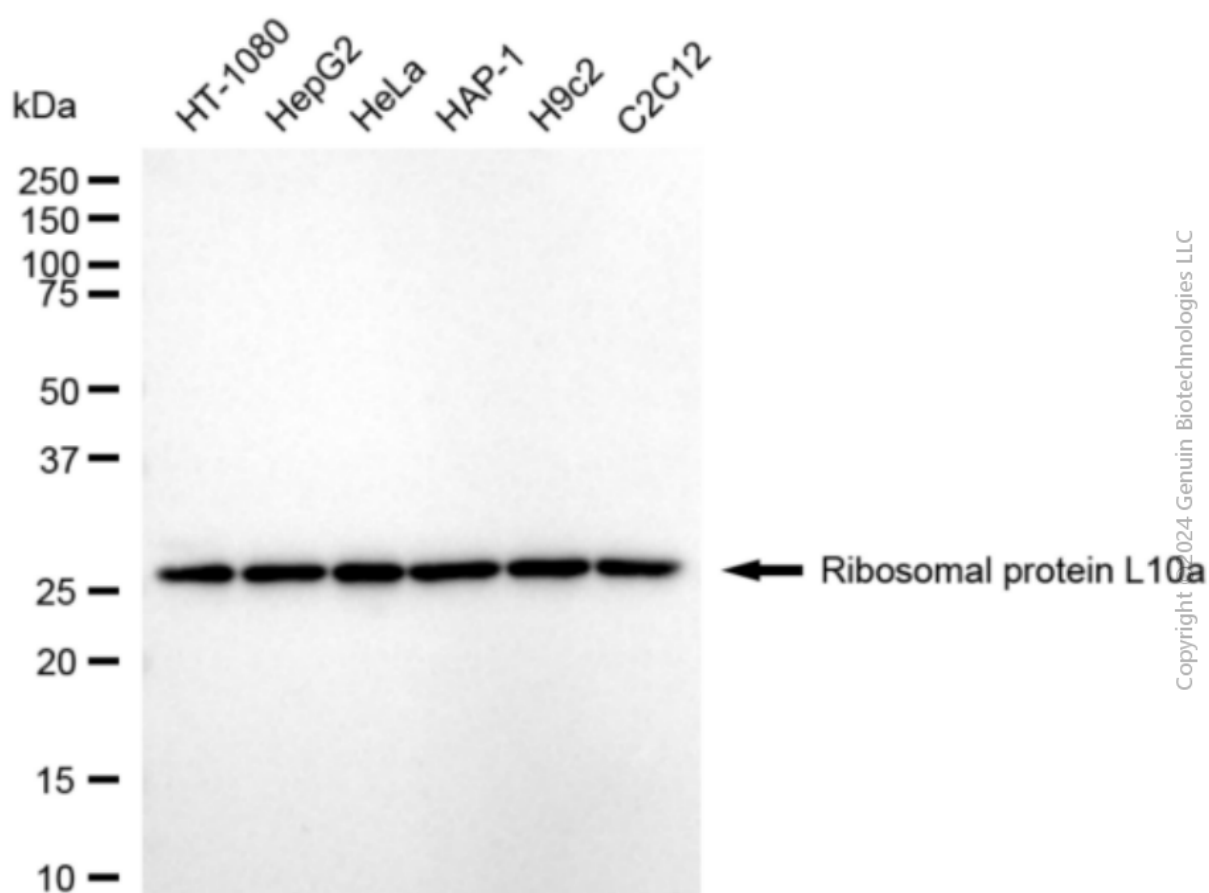
**ORDERS**

SALES@GENUINBIOTECH.COM  
FAX: +1-540-855-7041

**WWW.GENUINBIOTECH.COM**

## Anti-Ribosomal Protein L10a Recombinant Rabbit Monoclonal Antibody

PAGE 3



Western blotting analysis using anti-ribosomal protein L10a antibody (Cat#3066). Total cell lysates (30  $\mu$ g) from various cell lines were loaded and separated by SDS-PAGE. The blot was incubated with anti-ribosomal protein L10a antibody (Cat#3066, 1:5,000) and HRP-conjugated goat anti-rabbit secondary antibody (Cat#201, 1:20,000) respectively. Image was developed using NaQ™ ECL Substrate Kit (Cat#716).

### SUPPORT

SUPPORT@GENUINBIOTECH.COM  
TEL: +1-540-855-7041

### ORDERS

SALES@GENUINBIOTECH.COM  
FAX: +1-540-855-7041

[WWW.GENUINBIOTECH.COM](http://WWW.GENUINBIOTECH.COM)