

# Anti-Protein Regulator Of Cytokinesis 1 Recombinant Rabbit Monoclonal Antibody



**Catalog #: 3067**

## Aliases

PRC1; Protein Regulator Of Cytokinesis 1; ASE1; MAP65; Anaphase Spindle Elongation 1 Homolog (S. Cerevisiae); Anaphase Spindle Elongation 1 Homolog; Protein Regulating Cytokinesis 1

## Background

Gene Name: PRC1

NCBI Gene Entry: [9055](#)

UniProt Entry: [O43663](#)

## Application Information

Molecular Weight: Predicted, 72 kDa; observed, 72 kDa

Clonality: Rabbit monoclonal antibody

Clone ID: 24GB3900

Species Reactivity: Human, mouse, rat

Applications Tested: Western blotting (WB), flow cytometry (FCM), immunocytochemistry (IC)

## Immunogen

A synthesized peptide derived from human PRC1

## Isotype

Rabbit IgG

## Storage Buffer

Supplied in PBS (pH 7.4) containing 50% glycerol, and 0.02% sodium azide.

## Storage

Store at -20 °C for one year.

## Recommended Dilutions

Western Blotting (WB): 1:1,000-1:5,000

Flow Cytometry (FCM): 1:2,000

Immunocytochemistry (IC): 1:100-1:1,000

**Note:** This product is for research use only.

---

### SUPPORT

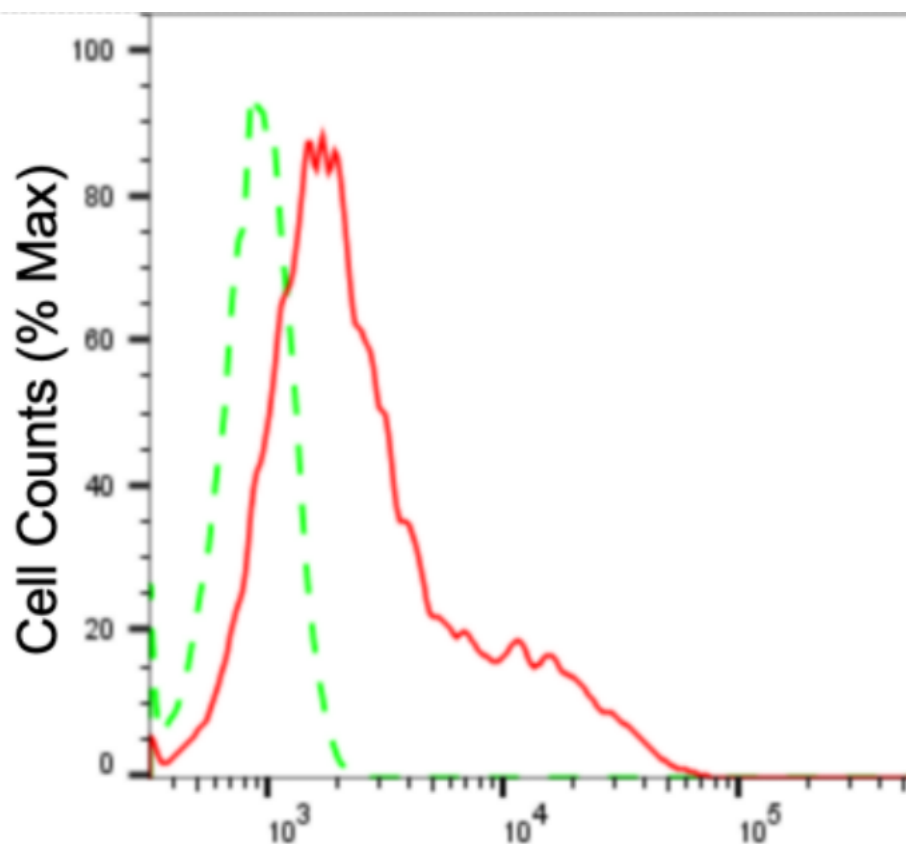
SUPPORT@GENUINBIOTECH.COM  
TEL: +1-540-855-7041

### ORDERS

SALES@GENUINBIOTECH.COM  
FAX: +1-540-855-7041

[WWW.GENUINBIOTECH.COM](http://WWW.GENUINBIOTECH.COM)

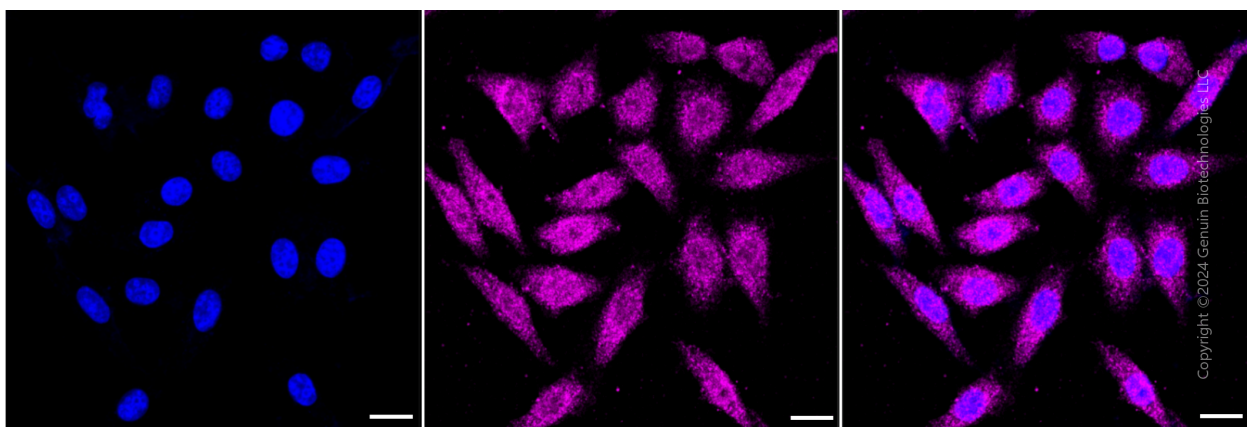
**Validation Data**



Copyright ©2024 Genuin Biotechnologies LLC

**Protein regulator of cytokinesis 1-Alexa Fluor® 647**

Flow cytometric analysis of protein regulator of cytokinesis 1 expression in HepG2 cells using anti-protein regulator of cytokinesis 1 antibody (Cat#3067, 1:2,000). Green, isotype control; red, protein regulator of cytokinesis 1.



Immunocytochemical staining of HepG2 cells with anti-Protein regulator of cytokinesis 1 antibody (Cat#3067, 1:1,000). Nuclei were stained blue with DAPI; Protein regulator of cytokinesis 1 was stained magenta with Alexa Fluor® 647. Images were taken using Leica

**SUPPORT**

SUPPORT@GENUINBIOTECH.COM  
TEL: +1-540-855-7041

**ORDERS**

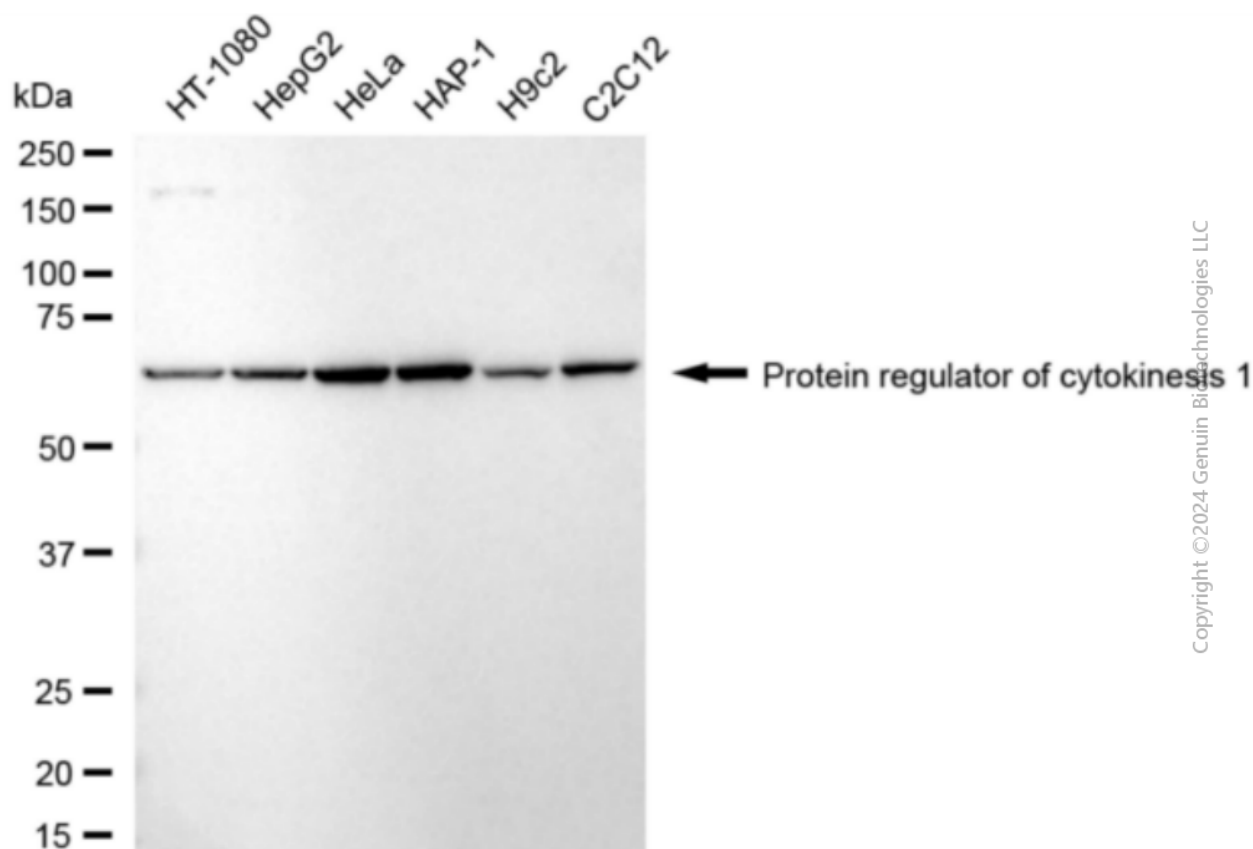
SALES@GENUINBIOTECH.COM  
FAX: +1-540-855-7041

**WWW.GENUINBIOTECH.COM**

# Anti-Protein Regulator Of Cytokinesis 1 Recombinant Rabbit Monoclonal Antibody

PAGE 3

stellaris 5. Protein abundance based on laser Intensity and smart gain: Medium. Scale bar: 20  $\mu$ m.



Western blotting analysis using anti-protein regulator of cytokinesis 1 antibody (Cat#3067). Total cell lysates (30  $\mu$ g) from various cell lines were loaded and separated by SDS-PAGE. The blot was incubated with anti-protein regulator of cytokinesis 1 antibody (Cat#3067, 1:5,000) and HRP-conjugated goat anti-rabbit secondary antibody (Cat#201, 1:20,000) respectively. Image was developed using FeQ™ ECL Substrate Kit (Cat#226).

## SUPPORT

SUPPORT@GENUINBIOTECH.COM  
TEL: +1-540-855-7041

## ORDERS

SALES@GENUINBIOTECH.COM  
FAX: +1-540-855-7041

WWW.GENUINBIOTECH.COM