

# Anti-Cyclin Dependent Kinase Inhibitor 1A Recombinant Rabbit Monoclonal Antibody



**Catalog #: 3071**

## Aliases

CDKN1A; Cyclin Dependent Kinase Inhibitor 1A; CAP20; CIP1; WAF1; SDI1; P21; P21CIP1; CDKN1; Cyclin-Dependent Kinase Inhibitor 1A (P21, Cip1); Cyclin-Dependent Kinase Inhibitor 1;

Cdk-Interacting Protein 1; P21Cip1/Waf1; MDA-6; Melanoma Differentiation Associated Protein 6; Melanoma Differentiation-Associated Protein 6; Wild-Type P53-Activated Fragment 1; CDK-Interaction Protein 1; CDK-Interacting Protein 1; DNA Synthesis Inhibitor; MDA6; PIC1

## Background

Gene Name: CDKN1A

NCBI Gene Entry: [1026](#)

UniProt Entry: [P38936](#)

## Application Information

Molecular Weight: Predicted, 18 kDa; observed, 18 kDa

Clonality: Rabbit monoclonal antibody

Clone ID: 24GB3920

Species Reactivity: Human

Applications Tested: Western blotting (WB), flow cytometry (FCM), immunocytochemistry (IC)

## Immunogen

A synthesized peptide derived from human p21

## Isotype

Rabbit IgG

## Storage Buffer

Supplied in PBS (pH 7.4) containing 50% glycerol, and 0.02% sodium azide.

## Storage

Store at -20 °C for one year.

## Recommended Dilutions

Western Blotting (WB): 1:1,000-1:5,000

Flow Cytometry (FCM): 1:2,000

Immunocytochemistry (IC): 1:100-1:1,000

---

### SUPPORT

SUPPORT@GENUINBIOTECH.COM  
TEL: +1-540-855-7041

### ORDERS

SALES@GENUINBIOTECH.COM  
FAX: +1-540-855-7041

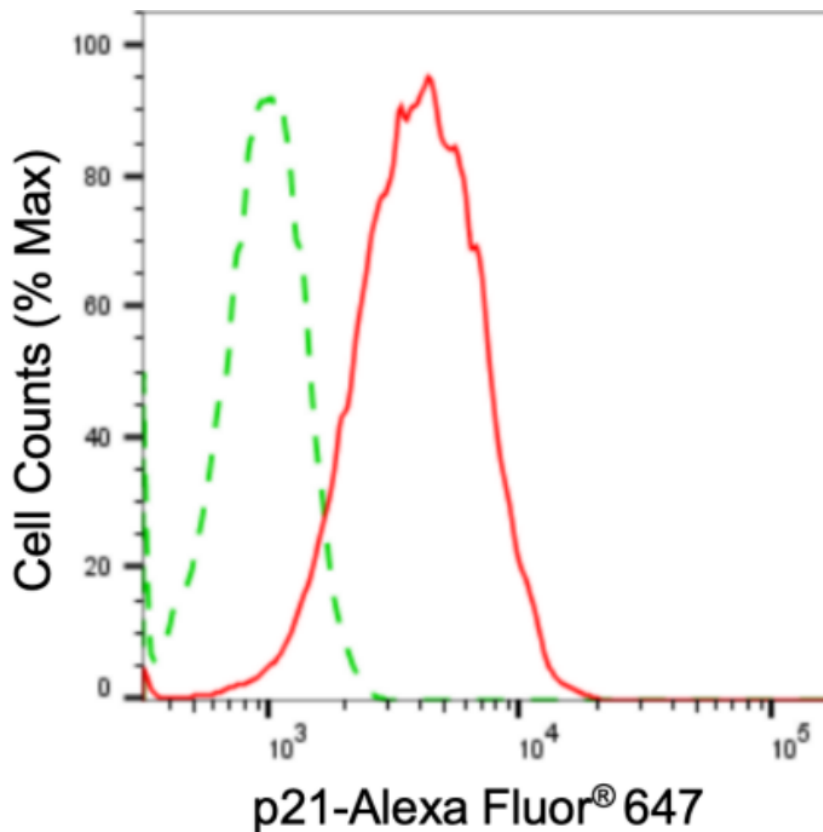
[WWW.GENUINBIOTECH.COM](http://WWW.GENUINBIOTECH.COM)

# Anti-Cyclin Dependent Kinase Inhibitor 1A Recombinant Rabbit Monoclonal Antibody

PAGE 2

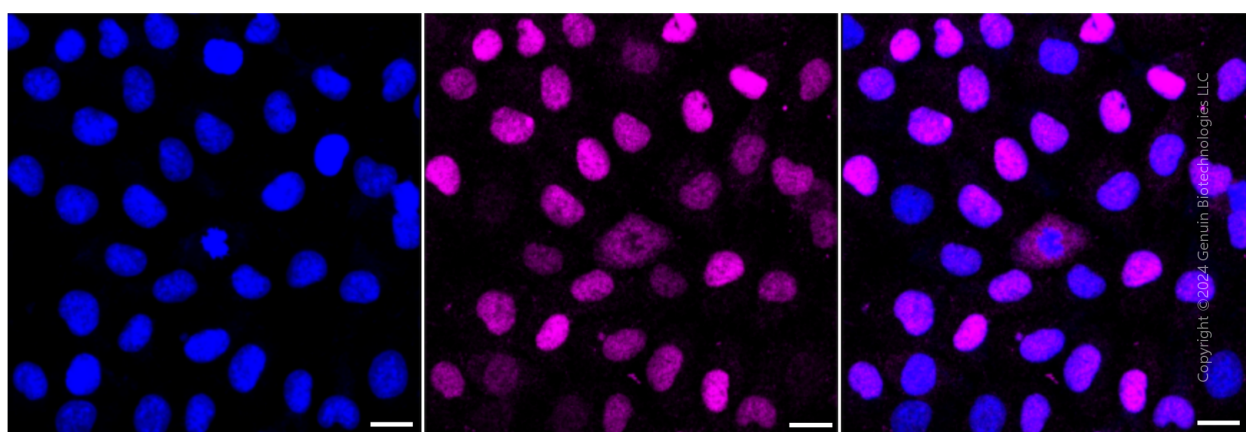
**Note:** This product is for research use only.

## Validation Data



Copyright ©2024 Genuin Biotechnologies LLC

Flow cytometric analysis of p21 expression in HT-1080 cells using anti-p21 antibody (Cat#3071, 1:2,000). Green, isotype control; red, p21.



Immunocytochemical staining of HT-1080 cells with anti-p21 antibody (Cat#3071, 1:1,000). Nuclei were stained blue with DAPI; p21 was stained magenta with Alexa Fluor® 647. Images were taken using Leica stellaris 5. Protein abundance based on laser Intensity and smart gain: Medium. Scale bar: 20  $\mu$ m.

### SUPPORT

SUPPORT@GENUINBIOTECH.COM  
TEL: +1-540-855-7041

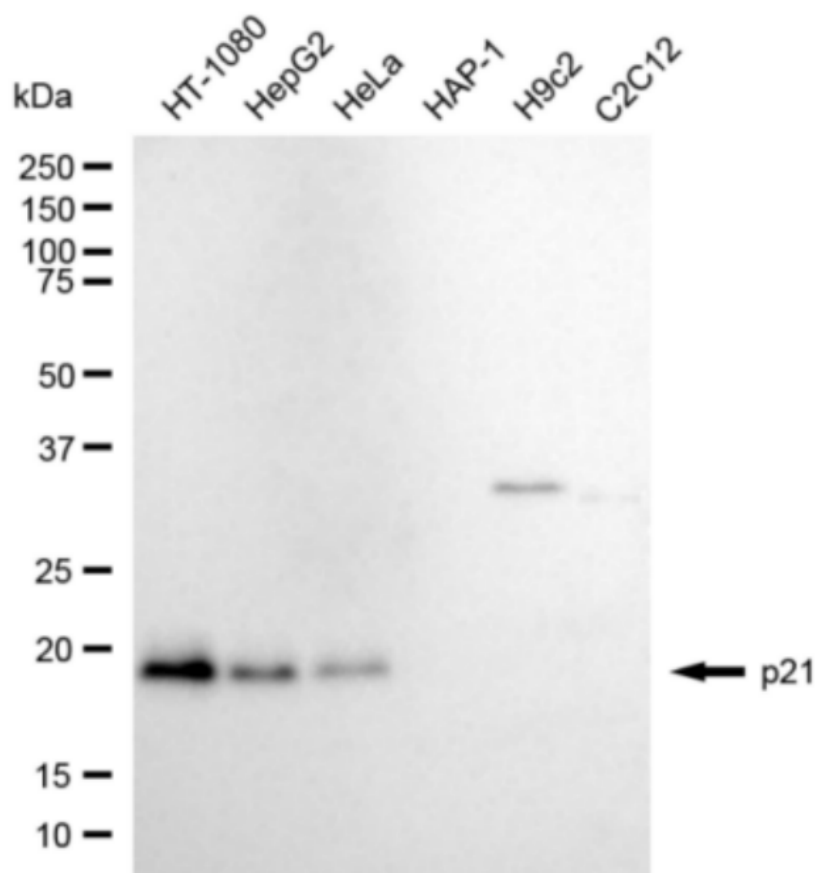
### ORDERS

SALES@GENUINBIOTECH.COM  
FAX: +1-540-855-7041

[WWW.GENUINBIOTECH.COM](http://WWW.GENUINBIOTECH.COM)

## Anti-Cyclin Dependent Kinase Inhibitor 1A Recombinant Rabbit Monoclonal Antibody

PAGE 3



Copyright ©2024 Genuin Biotechnologies LLC

Western blotting analysis using anti-p21 antibody (Cat#3071). Total cell lysates (30 µg) from various cell lines were loaded and separated by SDS-PAGE. The blot was incubated with anti-p21 antibody (Cat#3071, 1:5,000) and HRP-conjugated goat anti-rabbit secondary antibody (Cat#201, 1:20,000) respectively. Image was developed using FeQ™ ECL Substrate Kit (Cat#226).

### SUPPORT

SUPPORT@GENUINBIOTECH.COM  
TEL: +1-540-855-7041

### ORDERS

SALES@GENUINBIOTECH.COM  
FAX: +1-540-855-7041

[WWW.GENUINBIOTECH.COM](http://WWW.GENUINBIOTECH.COM)