

Anti-Secreted Phosphoprotein 1 Recombinant Rabbit Monoclonal Antibody



Catalog #: 3078

Aliases

SPP1; Secreted Phosphoprotein 1; Lnc-PKD2-2-3; Osteopontin; ETA-1; BSPI; BNSP; OPN; Early T-Lymphocyte Activation 1; Urinary Stone Protein; Nephropontin; Uropontin; Secreted Phosphoprotein 1 (Osteopontin, Bone Sialoprotein I, Early T-Lymphocyte Activation 1); Osteopontin/Immunoglobulin Alpha 1 Heavy Chain Constant Region Fusion Protein; Bone Sialoprotein I; SPP1/CALPHA1 Fusion; Bone Sialoprotein 1; SPP-1

Background

Gene Name: SPP1

NCBI Gene Entry: [6696](#)

UniProt Entry: [P10451](#)

Application Information

Molecular Weight: Predicted, 35 kDa; observed, 35 kDa

Clonality: Rabbit monoclonal antibody

Clone ID: 24GB3955

Species Reactivity: Human, mouse, rat

Applications Tested: Western blotting (WB), immunocytochemistry (IC), flow cytometry (FCM)

Immunogen

A synthesized peptide derived from human Osteopontin

Isotype

Rabbit IgG

Storage Buffer

Supplied in PBS (pH 7.4) containing 50% glycerol, and 0.02% sodium azide.

Storage

Store at -20 °C for one year.

Recommended Dilutions

Western Blotting (WB): 1:1,000-1:5,000

Immunocytochemistry (IC): 1:100-1:1,000

Flow Cytometry (FCM): 1:2,000

SUPPORT

SUPPORT@GENUINBIOTECH.COM
TEL: +1-540-855-7041

ORDERS

SALES@GENUINBIOTECH.COM
FAX: +1-540-855-7041

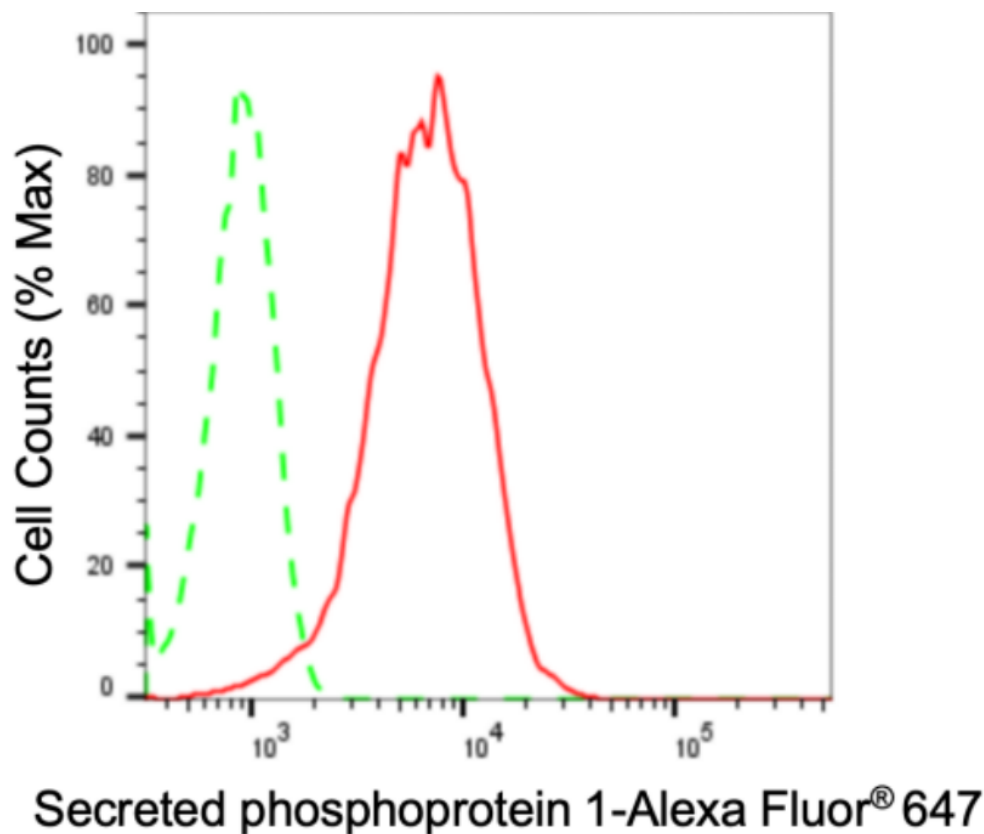
WWW.GENUINBIOTECH.COM

Anti-Secreted Phosphoprotein 1 Recombinant Rabbit Monoclonal Antibody

PAGE 2

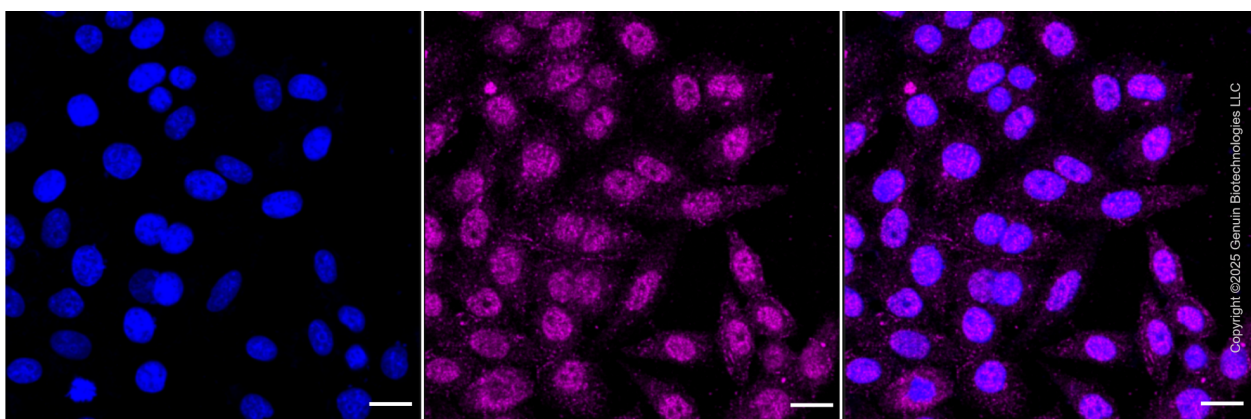
Note: This product is for research use only.

Validation Data



Copyright ©2024 Genuin Biotechnologies LLC

Flow cytometric analysis of secreted phosphoprotein 1 expression in HepG2 cells using anti-secreted phosphoprotein 1 antibody (Cat#3078, 1:2,000). Green, isotype control; red, secreted phosphoprotein 1.



Immunocytochemical staining of HepG2 cells with anti-Secreted phosphoprotein 1 antibody (Cat#3078, 1:1,000). Nuclei were stained blue with DAPI; Secreted phosphoprotein 1 was stained magenta with Alexa Fluor® 647. Images were taken using Leica stellaris 5. Protein abundance based on laser Intensity and smart gain: Meduim. Scale bar: 20 μ m.

SUPPORT

SUPPORT@GENUINBIOTECH.COM
TEL: +1-540-855-7041

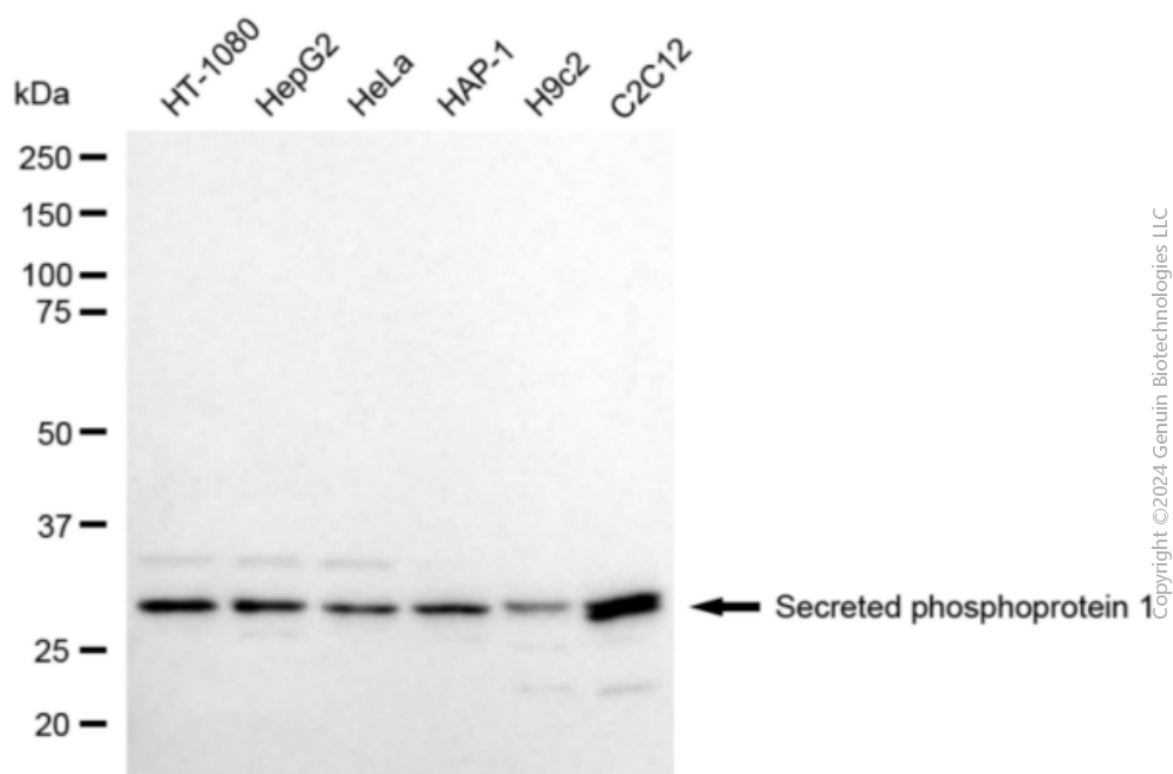
ORDERS

SALES@GENUINBIOTECH.COM
FAX: +1-540-855-7041

WWW.GENUINBIOTECH.COM

Anti-Secreted Phosphoprotein 1 Recombinant Rabbit Monoclonal Antibody

PAGE 3



Western blotting analysis using anti-secreted phosphoprotein 1 antibody (Cat#3078). Total cell lysates (30 µg) from various cell lines were loaded and separated by SDS-PAGE. The blot was incubated with anti-secreted phosphoprotein 1 antibody (Cat#3078, 1:5,000) and HRP-conjugated goat anti-rabbit secondary antibody (Cat#201, 1:20,000) respectively. Image was developed using NaQ™ ECL Substrate Kit (Cat#716).

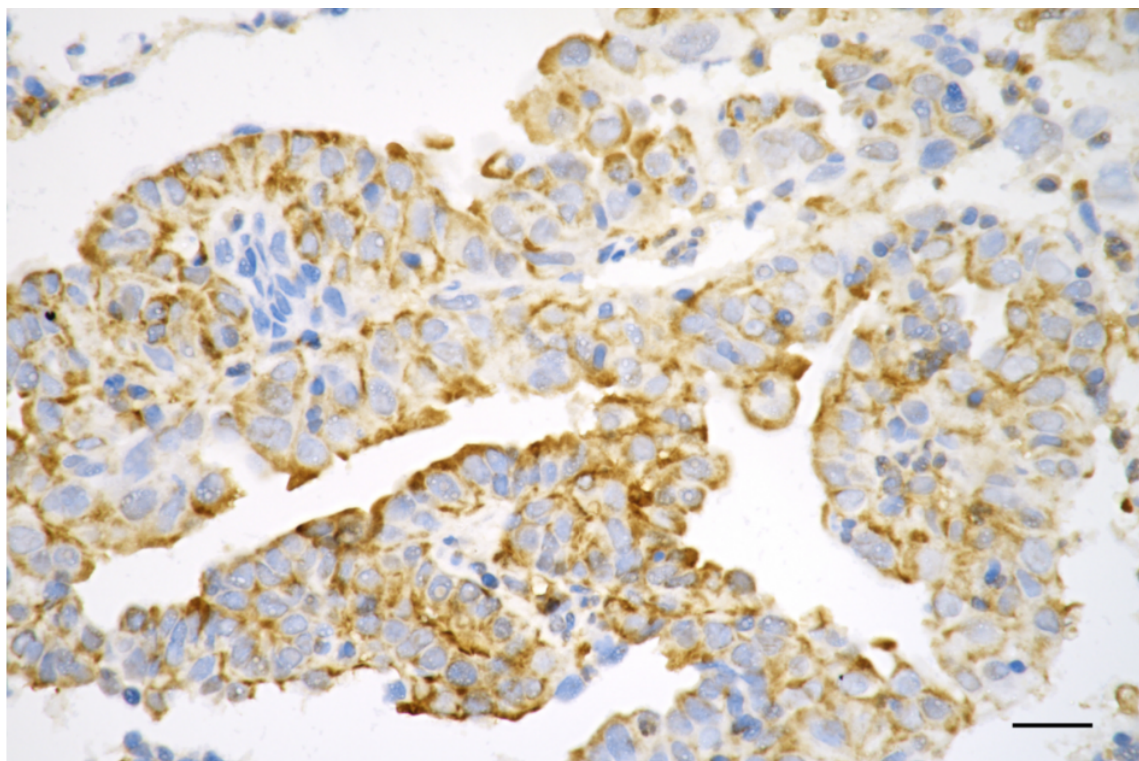
SUPPORT

SUPPORT@GENUINBIOTECH.COM
TEL: +1-540-855-7041

ORDERS

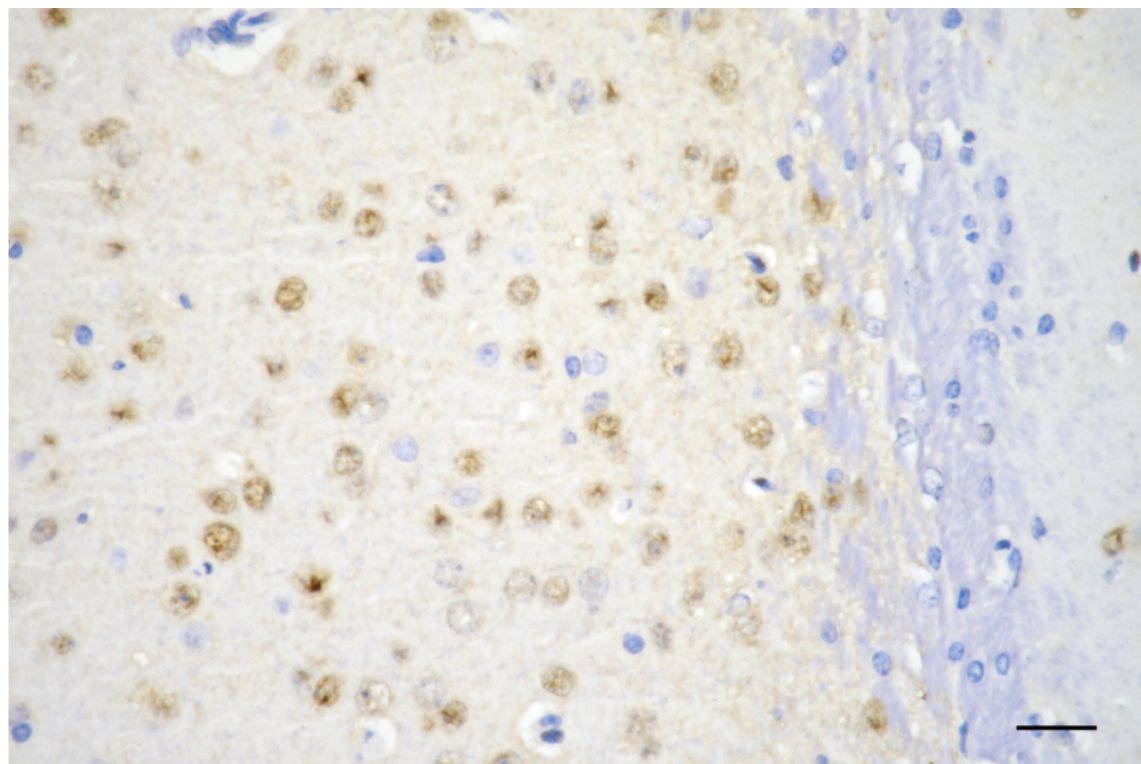
SALES@GENUINBIOTECH.COM
FAX: +1-540-855-7041

WWW.GENUINBIOTECH.COM



Copyright ©2025 Genuin Biotechnologies LLC

Immunohistochemistry was performed on paraffin-embedded human endometrial carcinoma using anti-secreted phosphoprotein 1 antibody (Cat#3078, 1:200). Antigen retrieval was done in sodium citrate buffer (pH 6.0). DAB was used for detection, with hematoxylin counterstaining. Images were acquired using a Nikon Ci-L Plus microscope (40× objective). Scale bar: 25 μ m.

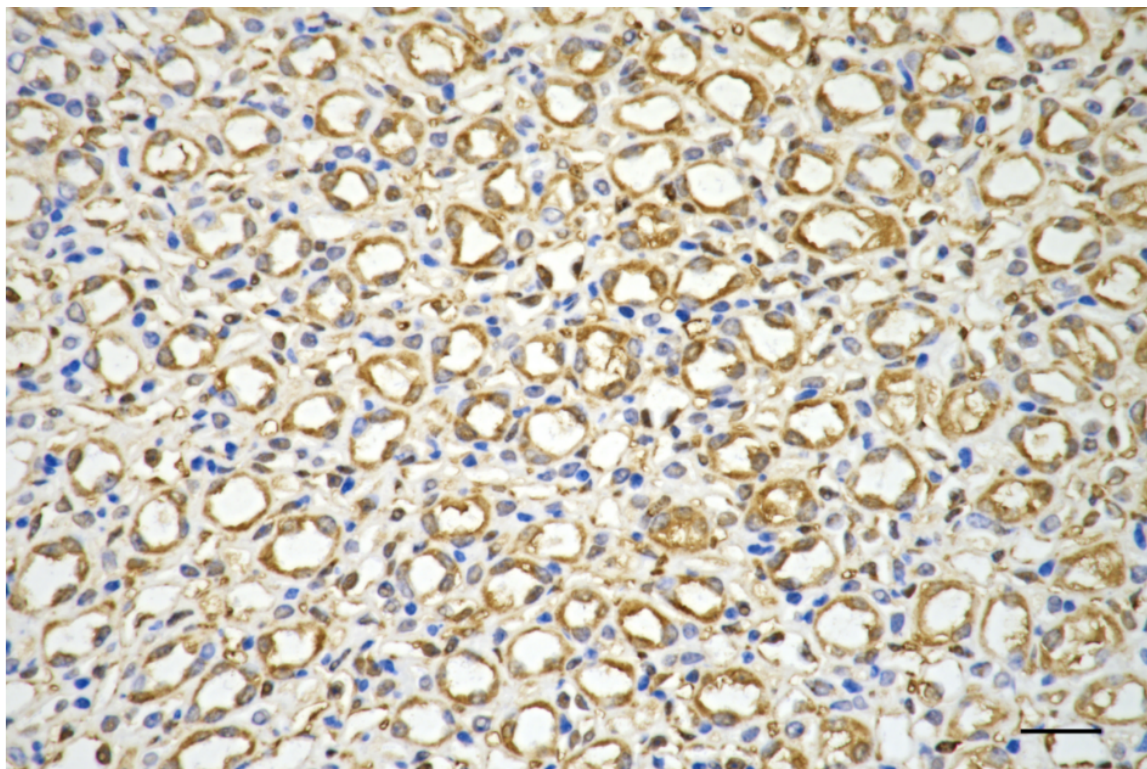


Copyright ©2025 Genuin Biotechnologies LLC

Anti-Secreted Phosphoprotein 1 Recombinant Rabbit Monoclonal Antibody

PAGE 5

Immunohistochemistry was performed on paraffin-embedded mouse brain using anti-secreted phosphoprotein 1 antibody (Cat#3078, 1:200). Antigen retrieval was done in sodium citrate buffer (pH 6.0). DAB was used for detection, with hematoxylin counterstaining. Images were acquired using a Nikon Ci-L Plus microscope (40× objective). Scale bar: 25 μ m.



Copyright ©2025 Genuin Biotechnologies LLC

Immunohistochemistry was performed on paraffin-embedded mouse kidney using anti-secreted phosphoprotein 1 antibody (Cat#3078, 1:200). Antigen retrieval was done in sodium citrate buffer (pH 6.0). DAB was used for detection, with hematoxylin counterstaining. Images were acquired using a Nikon Ci-L Plus microscope (40× objective). Scale bar: 25 μ m.

SUPPORT

SUPPORT@GENUINBIOTECH.COM
TEL: +1-540-855-7041

ORDERS

SALES@GENUINBIOTECH.COM
FAX: +1-540-855-7041

WWW.GENUINBIOTECH.COM