

Anti-Phospho-PAK1/2/3 (S144+S141+S154) Recombinant Rabbit Monoclonal Antibody



Catalog #: 3079

Aliases

PAK1; P21 (RAC1) Activated Kinase 1; P21/Cdc42/Rac1-Activated Kinase 1 (STE20 Homolog, Yeast); P21/Cdc42/Rac1-Activated Kinase 1 (Yeast Ste20-Related); P21 Protein (Cdc42/Rac)-Activated Kinase 1; Serine/Threonine-Protein Kinase PAK 1; STE20 Homolog, Yeast; EC 2.7.11.1; Alpha-PAK; P65-PAK; P21-Activated Kinase 1; EC 2.7.11; PAKalpha; IDDMSSD; PAK-1

Background

Gene Name: PAK1/PAK2/PAK3

NCBI Gene Entry: [5058/5062/5063](#)

UniProt Entry: [Q13153/Q13177/O75914](#)

Application Information

Molecular Weight: Predicted, 61,58,62 kDa; observed, 65 kDa

Clonality: Rabbit monoclonal antibody

Clone ID: 24GB3960

Species Reactivity: Human, mouse, rat

Applications Tested: Western blotting (WB), immunocytochemistry (IC), flow cytometry (FCM)

Immunogen

A synthesized peptide derived from human Phospho-PAK1/2/3 (S144+S141+S154)

Isotype

Rabbit IgG

Storage Buffer

Supplied in PBS (pH 7.4) containing 50% glycerol, and 0.02% sodium azide.

Storage

Store at -20 °C for one year.

Recommended Dilutions

Western Blotting (WB): 1:200-1:1,000

Immunocytochemistry (IC): 1:100-1:1,000

Flow Cytometry (FCM) : 1:2,000

SUPPORT

SUPPORT@GENUINBIOTECH.COM
TEL: +1-540-855-7041

ORDERS

SALES@GENUINBIOTECH.COM
FAX: +1-540-855-7041

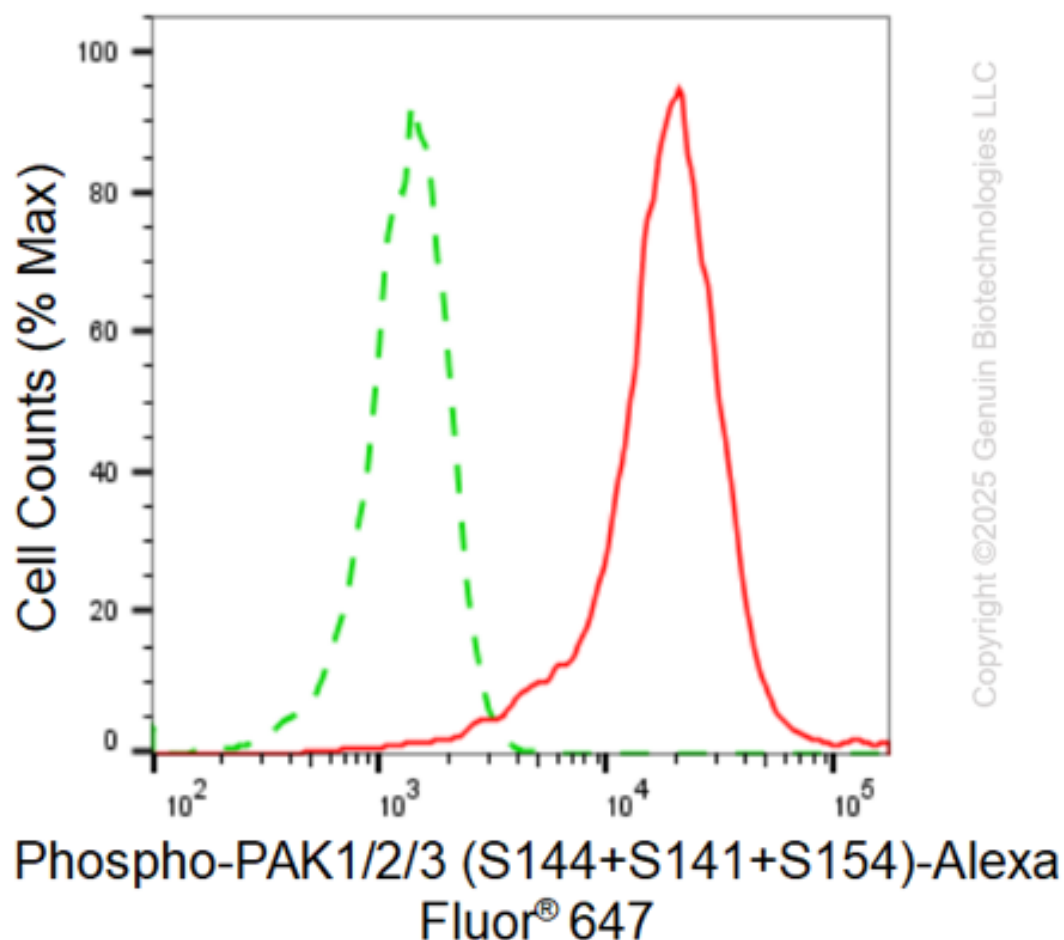
WWW.GENUINBIOTECH.COM

Anti-Phospho-PAK1/2/3 (S144+S141+S154) Recombinant Rabbit Monoclonal Antibody

PAGE 2

Note: This product is for research use only.

Validation Data



Flow cytometric analysis of Phospho-PAK1/2/3 (S144+S141+S154) expression in H9c2 cells using anti-Phospho-PAK1/2/3 (S144+S141+S154) antibody (Cat#3079, 1:2,000). Green, isotype control; red, Phospho-PAK1/2/3 (S144+S141+S154).

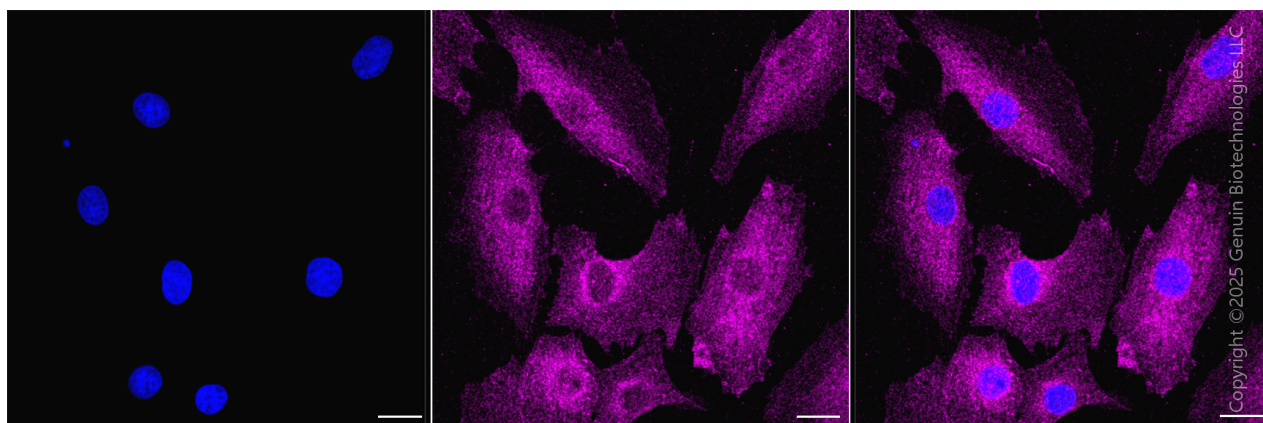
SUPPORT

SUPPORT@GENUINBIOTECH.COM
TEL: +1-540-855-7041

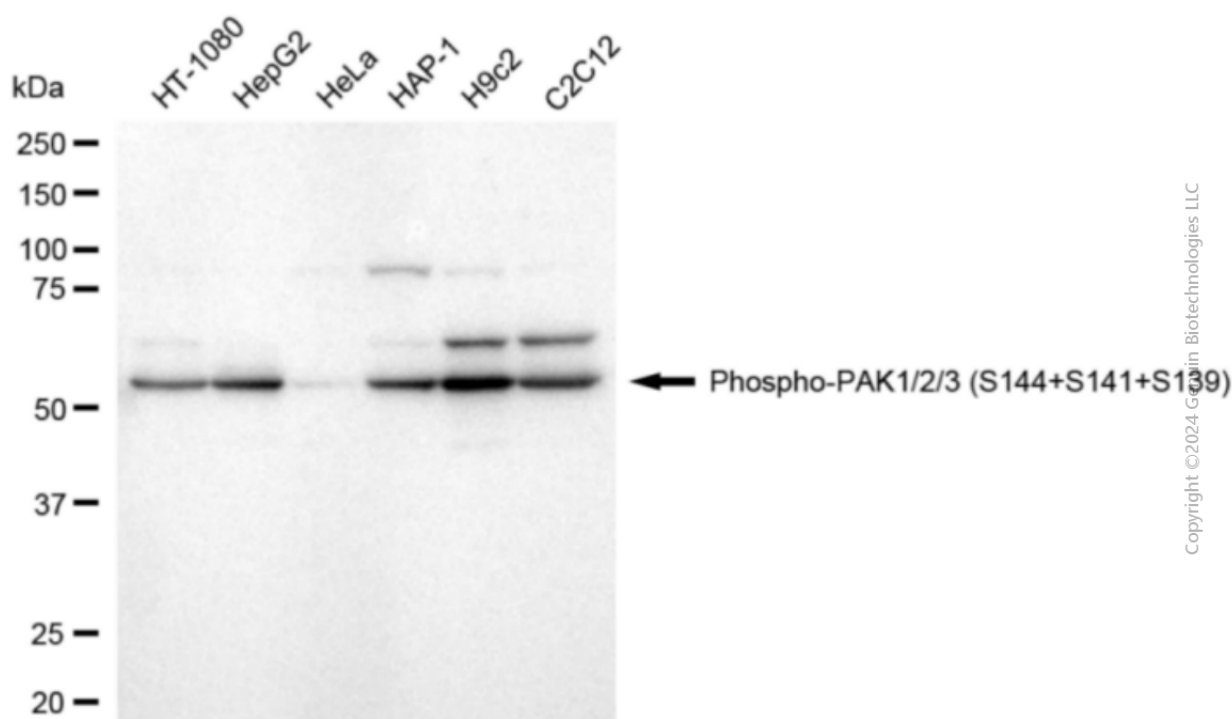
ORDERS

SALES@GENUINBIOTECH.COM
FAX: +1-540-855-7041

WWW.GENUINBIOTECH.COM



Immunocytochemical staining of H9C2 cells with anti-Phospho-PAK1/2/3 (S144+S141+S139) antibody (Cat #3079, 1:1,000) . Nuclei were stained blue with DAPI; Phospho-PAK1/2/3 (S144+S141+S139) was stained magenta with Alexa Fluor® 647. Images were taken using Leica stellaris 5. Protein abundance based on laser Intensity and smart gain:Medium. Scale bar, 20 μ m.



Western blotting analysis using anti-phospho-PAK1/2/3 (S144+S141+S154) antibody (Cat#3079). Total cell lysates (30 μ g) from various cell lines were loaded and separated by SDS-PAGE. The blot was incubated with anti-phospho-PAK1/2/3 (S144+S141+S154) antibody (Cat#3079, 1:10,000) and HRP-conjugated goat anti-rabbit secondary antibody (Cat#201, 1:20,000) respectively. Image was developed using FeQ™ ECL Substrate Kit (Cat#226).