

# Anti-YAP1 Recombinant Rabbit Monoclonal Antibody



**Catalog #: 3080**

## Aliases

YAP1; Yes1 Associated Transcriptional Regulator; YAP65; YAP-1; Yes-Associated Protein YAP65 Homolog; Transcriptional Coactivator YAP1; Yes Associated Protein 1; Protein Yorkie Homolog; Yes-Associated Protein 1, 65kDa; 65 KDa Yes-Associated Protein; Yes-Associated Protein 2; Yes-Associated Protein 1; Yorkie Homolog; COB1; YAP2; YAP; YKI

## Background

Gene Name: YAP1

NCBI Gene Entry: [10413](#)

UniProt Entry: [P46937](#)

## Application Information

Molecular Weight: Predicted, 54 kDa; observed, 65 kD

Clonality: Rabbit monoclonal antibody

Clone ID: 24GB3965

Species Reactivity: Human

Applications Tested: Western blotting (WB), flow cytometry (FCM), immunocytochemistry (IC)

## Immunogen

A synthesized peptide derived from human YAP1

## Isotype

Rabbit IgG

## Storage Buffer

Supplied in PBS (pH 7.4) containing 50% glycerol, and 0.02% sodium azide.

## Storage

Store at -20 °C for one year.

## Recommended Dilutions

Western Blotting (WB): 1:2,000-1:10,000

Flow Cytometry (FCM): 1:2,000

Immunocytochemistry (IC): 1:100-1:1,000

---

### SUPPORT

SUPPORT@GENUINBIOTECH.COM  
TEL: +1-540-855-7041

### ORDERS

SALES@GENUINBIOTECH.COM  
FAX: +1-540-855-7041

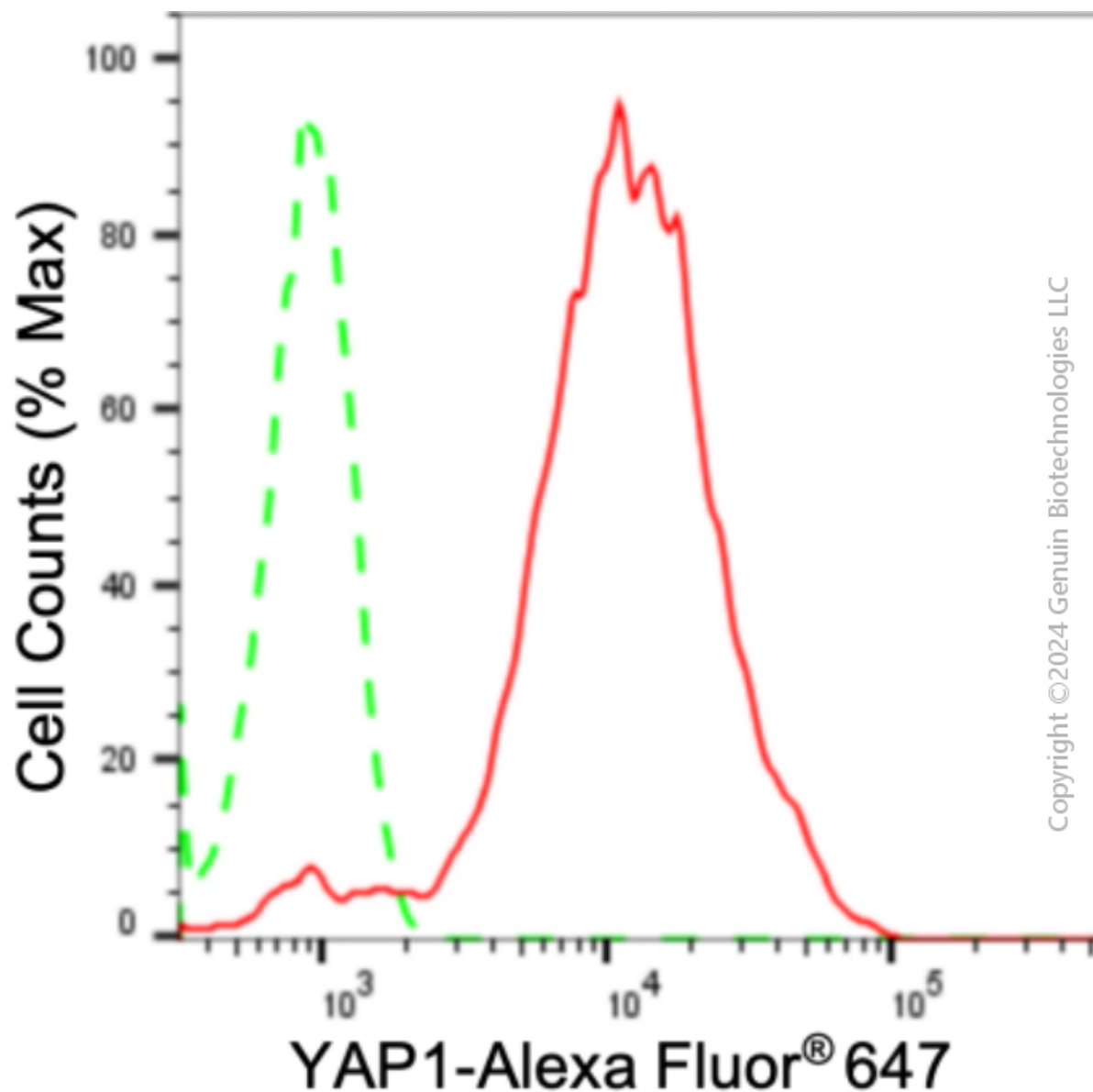
[WWW.GENUINBIOTECH.COM](http://WWW.GENUINBIOTECH.COM)

# Anti-YAP1 Recombinant Rabbit Monoclonal Antibody

PAGE 2

**Note:** This product is for research use only.

## Validation Data



Flow cytometric analysis of YAP1 expression in HepG2 cells using anti-YAP1 antibody (Cat#3080, 1:2,000). Green, isotype control; red, YAP1.

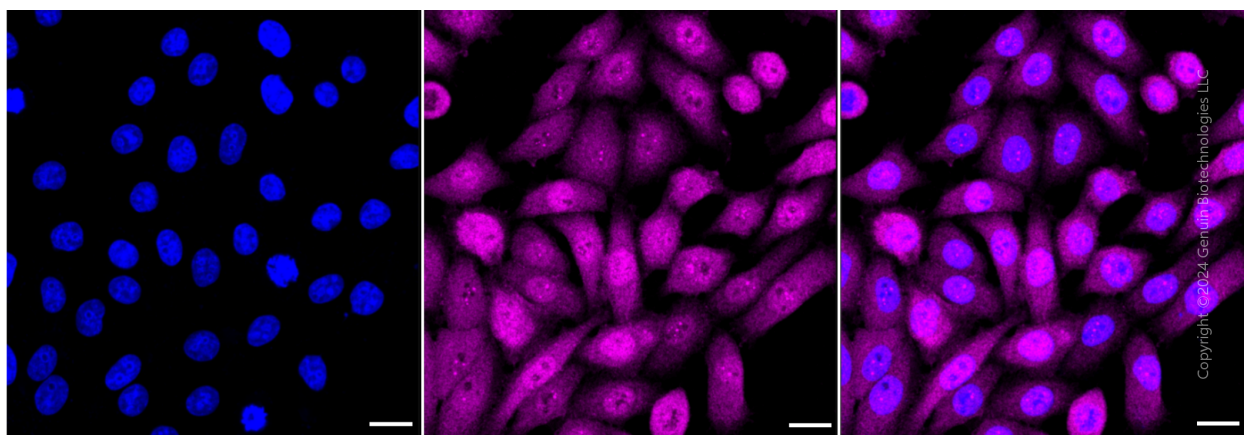
### SUPPORT

SUPPORT@GENUINBIOTECH.COM  
TEL: +1-540-855-7041

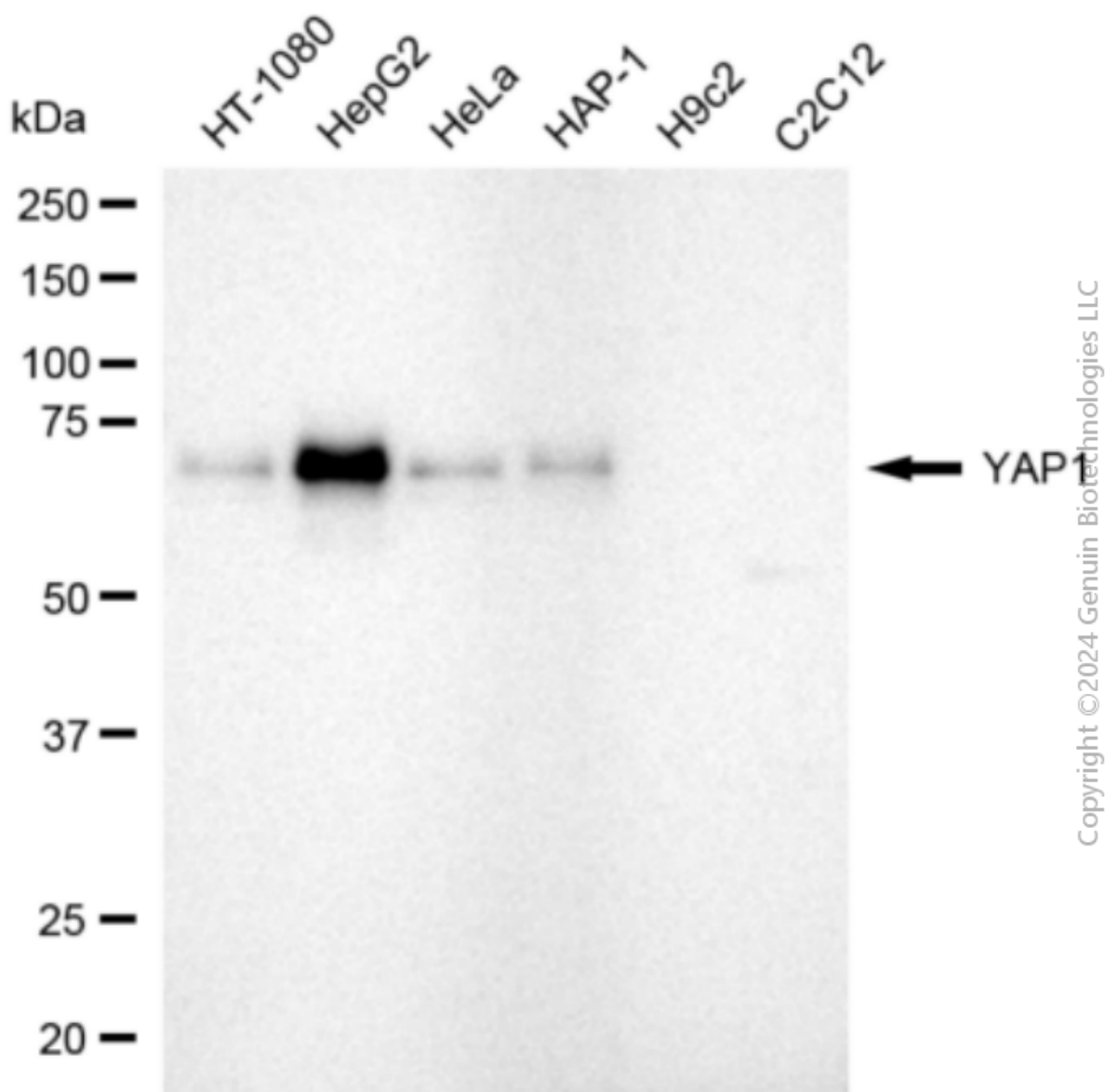
### ORDERS

SALES@GENUINBIOTECH.COM  
FAX: +1-540-855-7041

[WWW.GENUINBIOTECH.COM](http://WWW.GENUINBIOTECH.COM)



Immunocytochemical staining of HepG2 cells with anti-YAP1 antibody (Cat#3080, 1:1,000). Nuclei were stained blue with DAPI; YAP1 was stained magenta with Alexa Fluor® 647. Images were taken using Leica stellaris 5. Protein abundance based on laser Intensity and smart gain: High. Scale bar: 20  $\mu$ m.



Western blotting analysis using anti-YAP1 antibody (Cat#3080). Total cell lysates (30 µg) from various cell lines were loaded and separated by SDS-PAGE. The blot was incubated with anti-YAP1 antibody (Cat#3080, 1:10,000) and HRP-conjugated goat anti-rabbit secondary antibody (Cat#201, 1:20,000) respectively. Image was developed using FeQ™ ECL Substrate Kit (Cat#226).