

Anti-Phospho-eIF4E (S209) Recombinant Rabbit Monoclonal Antibody



Catalog #: 3082

Aliases

EIF4E; Eukaryotic Translation Initiation Factor 4E; EIF4EL1; EIF4E1; EIF4F; MRNA Cap-Binding Protein; EIF-4F 25 KDa Subunit; EIF-4E; Eukaryotic Translation Initiation Factor 4E-Like 1; AUTS19; EIF4E; CBP

Background

Gene Name: EIF4E

NCBI Gene Entry: [1977](#)

UniProt Entry: [P06730](#)

Application Information

Molecular Weight: Predicted, 25 kDa; observed, 25 kDa

Clonality: Rabbit monoclonal antibody

Clone ID: 24GB3975

Species Reactivity: Human, mouse, rat

Applications Tested: Western blotting (WB), immunocytochemistry (IC), flow cytometry (FCM)

Immunogen

A synthesized peptide derived from human Phospho-eIF4E (S209)

Isotype

Rabbit IgG

Storage Buffer

Supplied in PBS (pH 7.4) containing 50% glycerol, and 0.02% sodium azide.

Storage

Store at -20 °C for one year.

Recommended Dilutions

Western Blotting (WB): 1:2,000-1:10,000

Immunocytochemistry (IC): 1:100-1:1,000

Flow Cytometry (FCM) : 1:2,000

Note: This product is for research use only.

SUPPORT

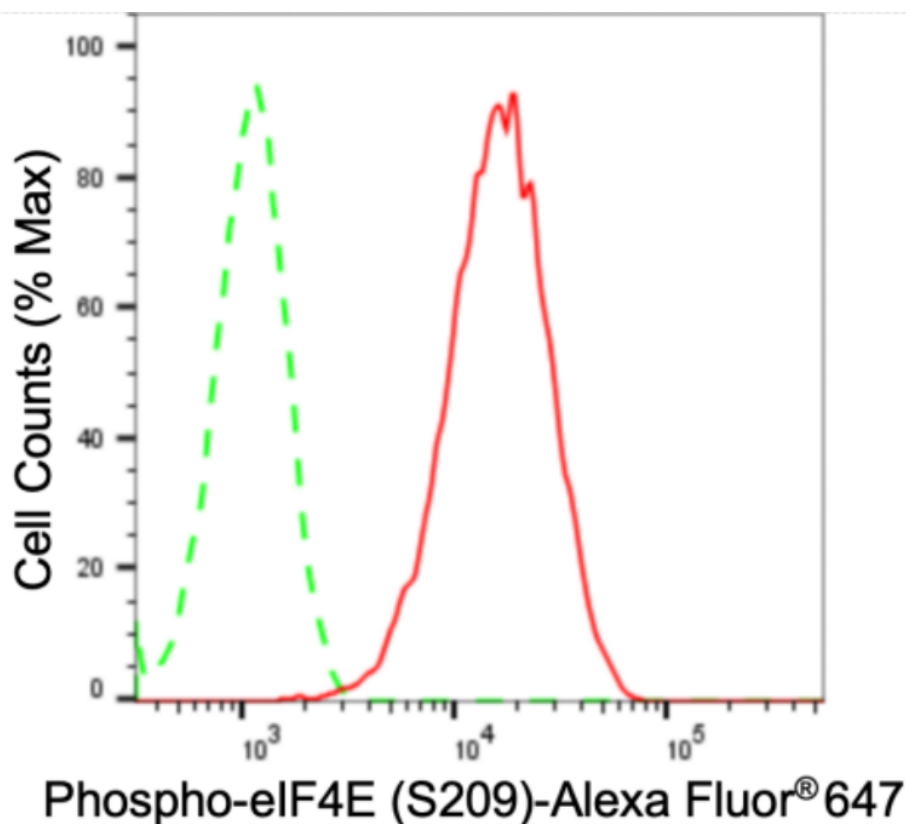
SUPPORT@GENUINBIOTECH.COM
TEL: +1-540-855-7041

ORDERS

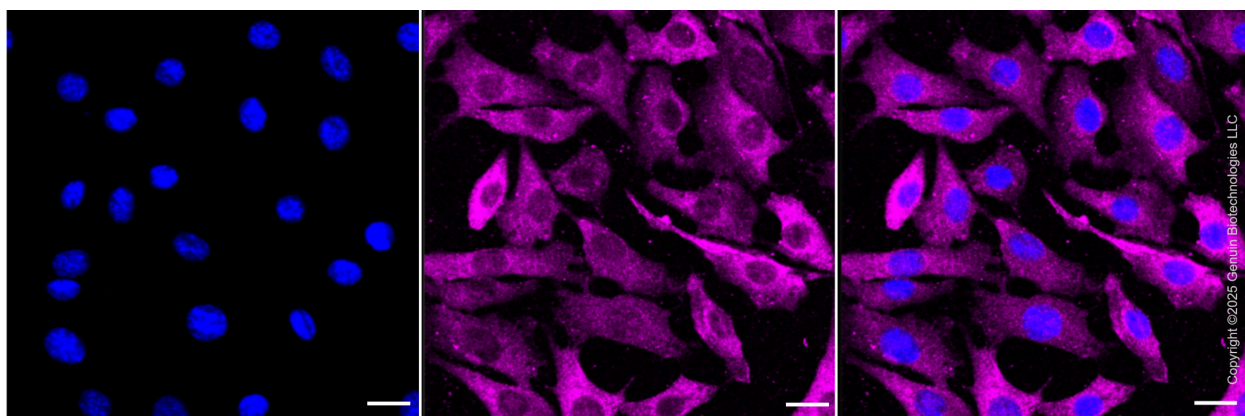
SALES@GENUINBIOTECH.COM
FAX: +1-540-855-7041

WWW.GENUINBIOTECH.COM

Validation Data



Flow cytometric analysis of phospho-eIF4E (S209) expression in C2C12 cells using anti-phospho-eIF4E (S209) antibody (Cat#3082, 1:2,000). Green, isotype control; red, phospho-eIF4E (S209).



Immunocytochemical staining of C2C12 cells with phospho-eIF4E (S209) antibody (Cat#3082, 1:1,000). Nuclei were stained blue with DAPI; Phospho-eIF4E (S209) was stained magenta with Alexa Fluor® 647. Images were taken using Leica stellaris 5. Protein abundance based on laser Intensity and smart gain: High. Scale bar: 20 μ m.

SUPPORT

SUPPORT@GENUINBIOTECH.COM
TEL: +1-540-855-7041

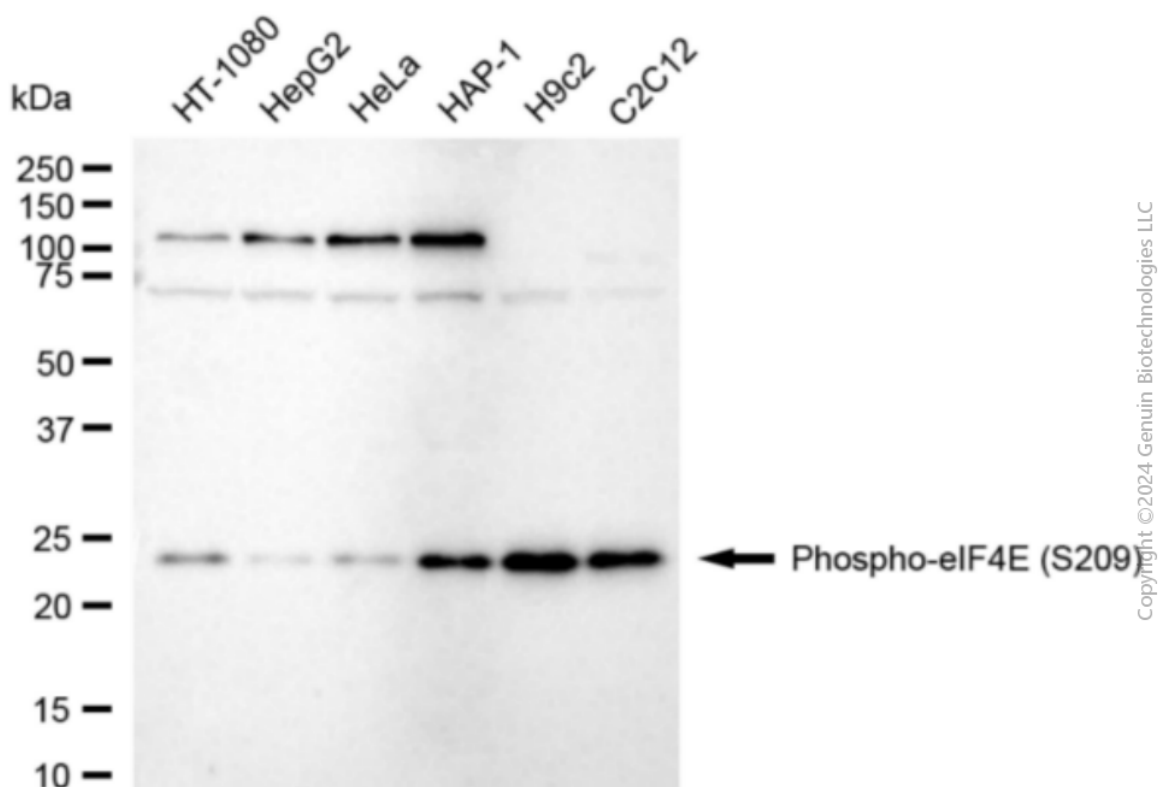
ORDERS

SALES@GENUINBIOTECH.COM
FAX: +1-540-855-7041

WWW.GENUINBIOTECH.COM

Anti-Phospho-eIF4E (S209) Recombinant Rabbit Monoclonal Antibody

PAGE 3



Western blotting analysis using anti-phospho-eIF4E (S209) antibody (Cat#3082). Total cell lysates (30 µg) from various cell lines were loaded and separated by SDS-PAGE. The blot was incubated with anti-phospho-eIF4E (S209) antibody (Cat#3082, 1:10,000) and HRP-conjugated goat anti-rabbit secondary antibody (Cat#201, 1:20,000) respectively. Image was developed using FeQ™ ECL Substrate Kit (Cat#226).

SUPPORT

SUPPORT@GENUINBIOTECH.COM
TEL: +1-540-855-7041

ORDERS

SALES@GENUINBIOTECH.COM
FAX: +1-540-855-7041

WWW.GENUINBIOTECH.COM