

Anti-Phospho-Retinoblastoma (S807) Recombinant Rabbit Monoclonal Antibody



Catalog #: 3084

Aliases

RB1; RB Transcriptional Corepressor 1; PPP1R130; RB; Protein Phosphatase 1, Regulatory Subunit 130; Prepro-Retinoblastoma-Associated Protein; Retinoblastoma-Associated Protein; Retinoblastoma 1; P110-RB1; P105-Rb; Pp110; OSRC; PRb; Retinoblastoma Susceptibility Protein; Osteosarcoma; Rb

Background

Gene Name: RB1

NCBI Gene Entry: [5925](#)

UniProt Entry: [P06400](#)

Application Information

Molecular Weight: Predicted, 106 kDa; observed, 106 kDa

Clonality: Rabbit monoclonal antibody

Clone ID: 24GB3985

Species Reactivity: Human, mouse, rat

Applications Tested: Western blotting (WB), flow cytometry (FCM), immunocytochemistry (IC)

Immunogen

A synthesized peptide derived from human Phospho-Retinoblastoma (S807)

Isotype

Rabbit IgG

Storage Buffer

Supplied in PBS (pH 7.4) containing 50% glycerol, and 0.02% sodium azide.

Storage

Store at -20 °C for one year.

Recommended Dilutions

Western Blotting (WB): 1:1,000-1:5,000

Flow Cytometry (FCM): 1:2,000

Immunocytochemistry (IC): 1:100-1:1,000

SUPPORT

SUPPORT@GENUINBIOTECH.COM
TEL: +1-540-855-7041

ORDERS

SALES@GENUINBIOTECH.COM
FAX: +1-540-855-7041

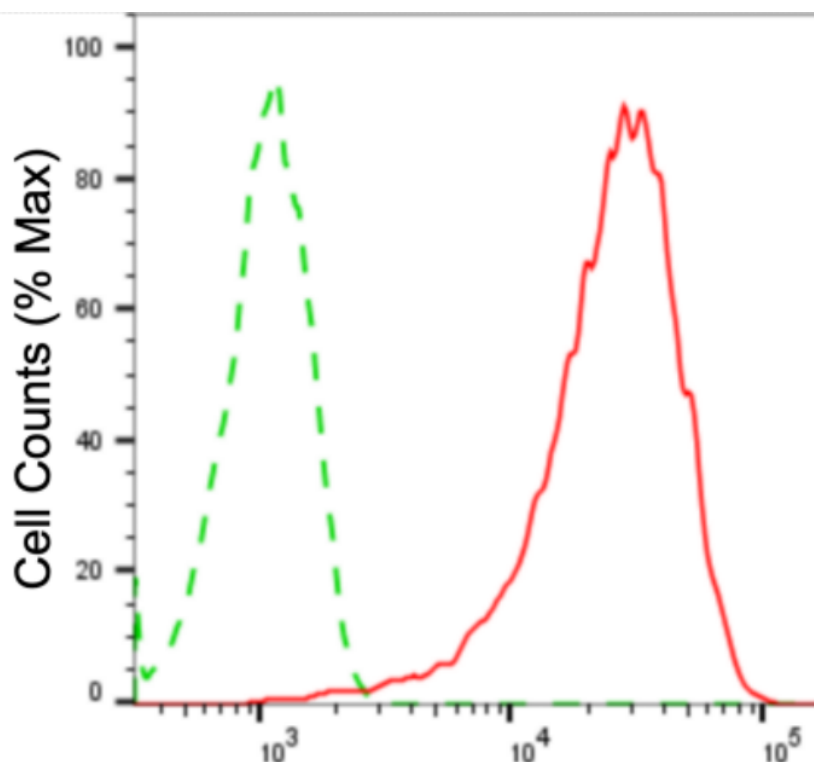
WWW.GENUINBIOTECH.COM

Anti-Phospho-Retinoblastoma (S807) Recombinant Rabbit Monoclonal Antibody

PAGE 2

Note: This product is for research use only.

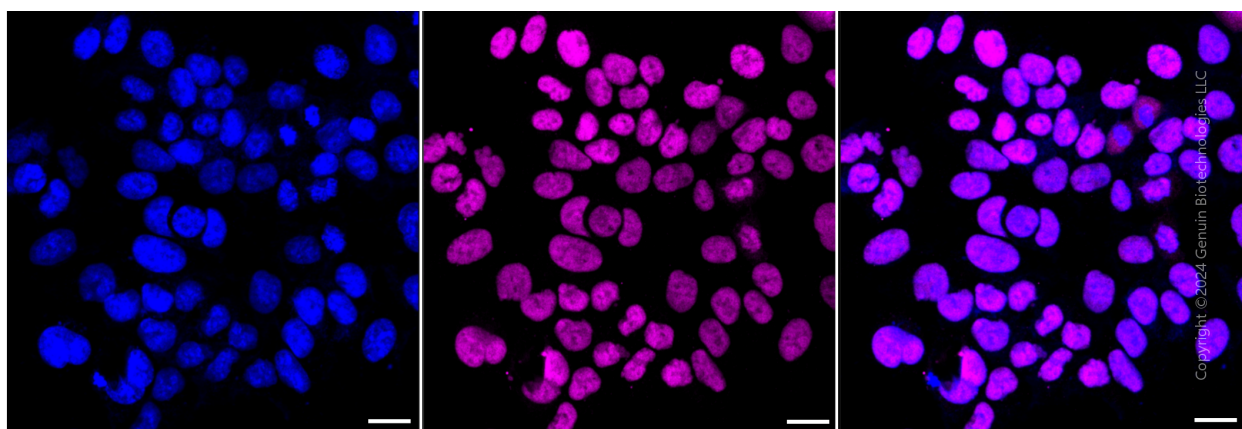
Validation Data



Copyright ©2024 Genuin Biotechnologies LLC

Phospho-Retinoblastoma (S807)-Alexa Fluor® 647

Flow cytometric analysis of Phospho-Retinoblastoma (S807) expression in HAP-1 cells using anti-Phospho-Retinoblastoma (S807) antibody (Cat#3084, 1:2,000). Green, isotype control; red, Phospho-Retinoblastoma (S807).



Copyright ©2024 Genuin Biotechnologies LLC

Immunocytochemical staining of HAP-1 with anti-phospho-retinoblastoma (S807) antibody (Cat#3084, 1:1,000). Nuclei were stained blue with DAPI; Phospho-retinoblastoma (S807) was stained magenta with Alexa Fluor® 647. Images were taken using Leica stellaris 5. Protein abundance based on laser Intensity and smart gain: High. Scale bar: 20 μ m.

SUPPORT

SUPPORT@GENUINBIOTECH.COM
TEL: +1-540-855-7041

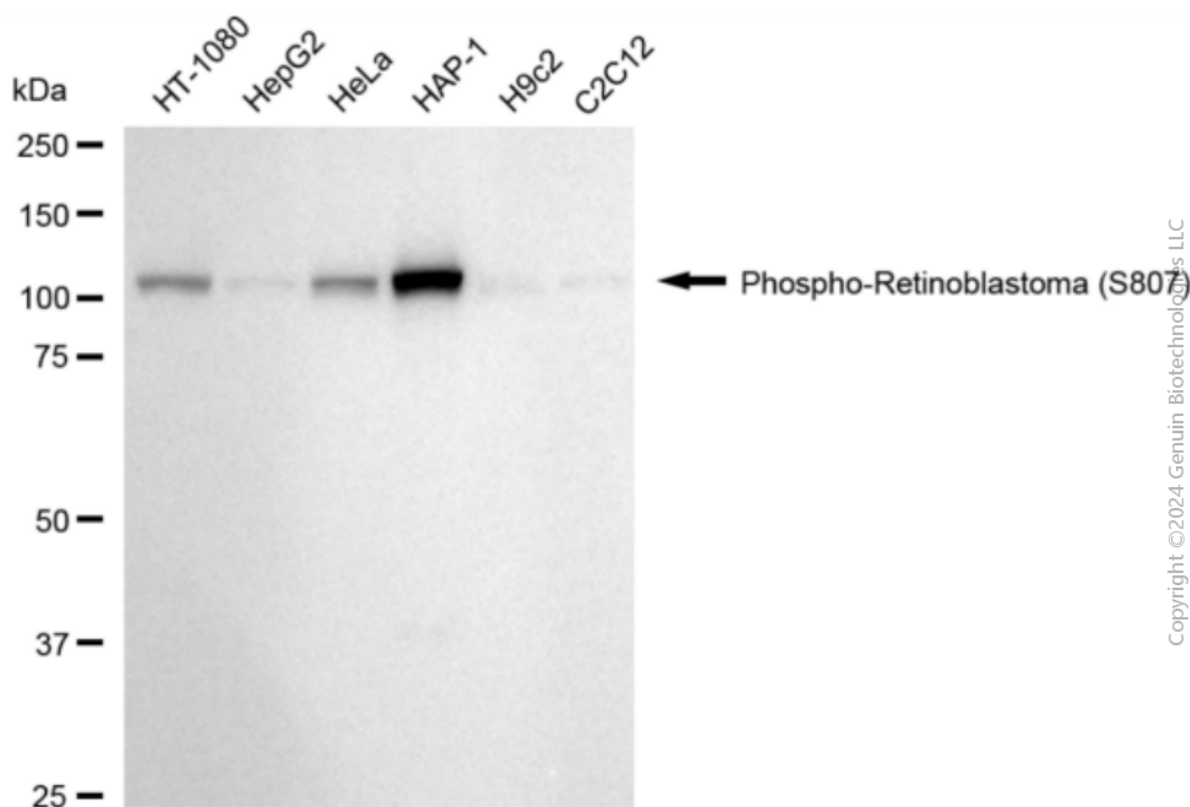
ORDERS

SALES@GENUINBIOTECH.COM
FAX: +1-540-855-7041

WWW.GENUINBIOTECH.COM

Anti-Phospho-Retinoblastoma (S807) Recombinant Rabbit Monoclonal Antibody

PAGE 3



Western blotting analysis using anti-phospho-retinoblastoma (S807) antibody (Cat#3084). Total cell lysates (30 µg) from various cell lines were loaded and separated by SDS-PAGE. The blot was incubated with anti-phospho-retinoblastoma (S807) antibody (Cat#3084, 1:5,000) and HRP-conjugated goat anti-rabbit secondary antibody (Cat#201, 1:20,000) respectively. Image was developed using FeQ™ ECL Substrate Kit (Cat#226).

SUPPORT

SUPPORT@GENUINBIOTECH.COM
TEL: +1-540-855-7041

ORDERS

SALES@GENUINBIOTECH.COM
FAX: +1-540-855-7041

WWW.GENUINBIOTECH.COM