

Anti-Phospho-FOXO3a (S253) Recombinant Rabbit Monoclonal Antibody



Catalog #: 3087

Aliases

FOXO3; Forkhead Box O3; AF6q21; FKHRL1; FOXO3A; FOXO2; Forkhead In Rhabdomyosarcoma-Like 1; Forkhead Box Protein O3; Forkhead, Drosophila, Homolog Of, In Rhabdomyosarcoma-Like 1; Forkhead Homolog (Rhabdomyosarcoma) Like 1; Forkhead Box O3A; AF6q21 Protein; FKHRL1P2; FOXO3A-

Background

Gene Name: FOXO3
NCBI Gene Entry: [2309](#)
UniProt Entry: [O43524](#)

Application Information

Molecular Weight: Predicted, 71 kDa; observed, 97 kDa
Clonality: Rabbit monoclonal antibody
Clone ID: 24GB4000
Species Reactivity: Human, mouse, rat
Applications Tested: Western blotting (WB), flow cytometry (FCM), immunocytochemistry (IC)

Immunogen

A synthesized peptide derived from human FoxO3a

Isotype

Rabbit IgG

Storage Buffer

Supplied in PBS (pH 7.4) containing 50% glycerol, and 0.02% sodium azide.

Storage

Store at -20 °C for one year.

Recommended Dilutions

Western Blotting (WB): 1:1,000-1:5,000
Flow Cytometry (FCM): 1:2,000
Immunocytochemistry (IC): 1:100-1:1,000

SUPPORT

SUPPORT@GENUINBIOTECH.COM
TEL: +1-540-855-7041

ORDERS

SALES@GENUINBIOTECH.COM
FAX: +1-540-855-7041

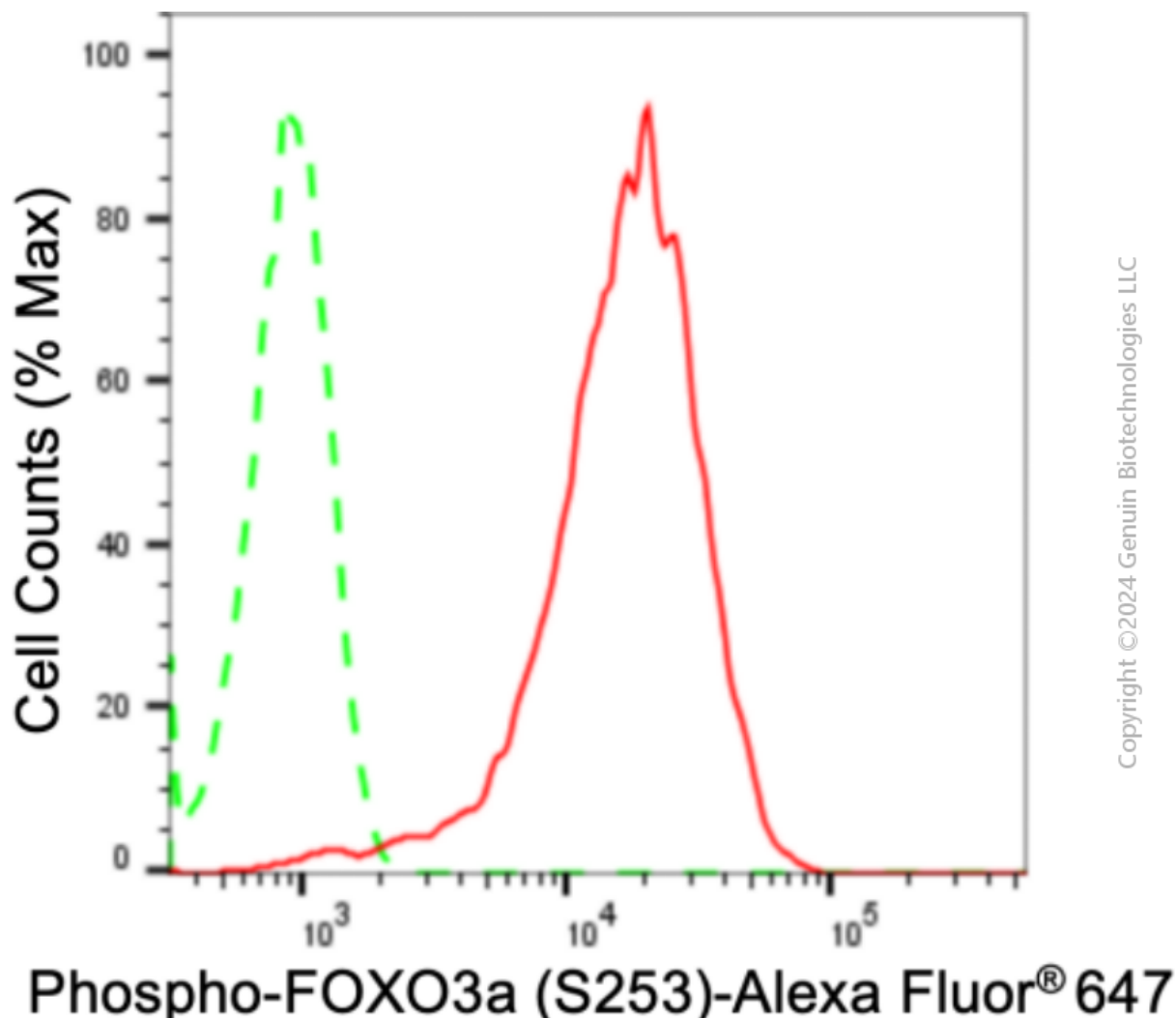
WWW.GENUINBIOTECH.COM

Anti-Phospho-FOXO3a (S253) Recombinant Rabbit Monoclonal Antibody

PAGE 2

Note: This product is for research use only.

Validation Data



Flow cytometric analysis of phospho-FOXO3a (S253) expression in HepG2 cells using anti-phospho-FOXO3a (S253) antibody (Cat#3087, 1:2,000). Green, isotype control; red, phospho-FOXO3a (S253).

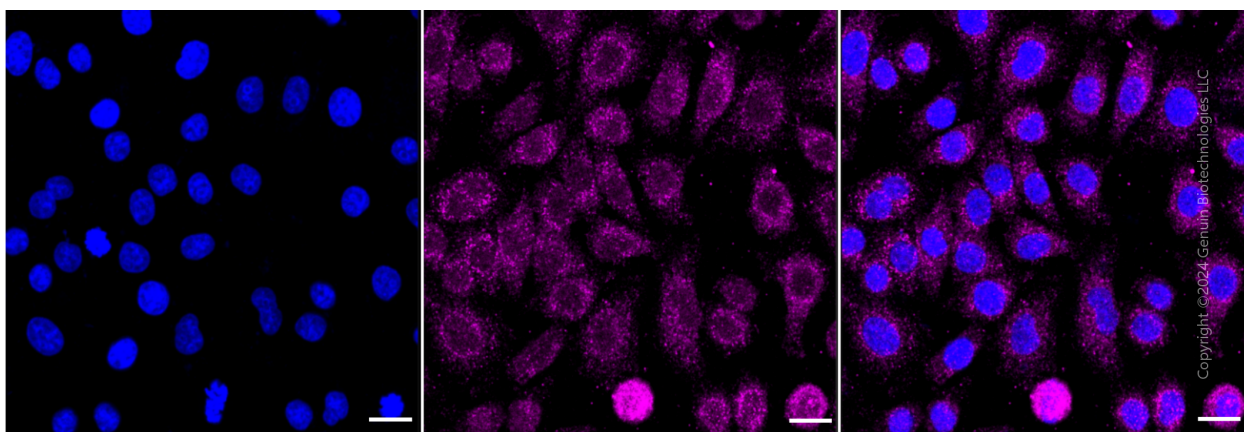
SUPPORT

SUPPORT@GENUINBIOTECH.COM
TEL: +1-540-855-7041

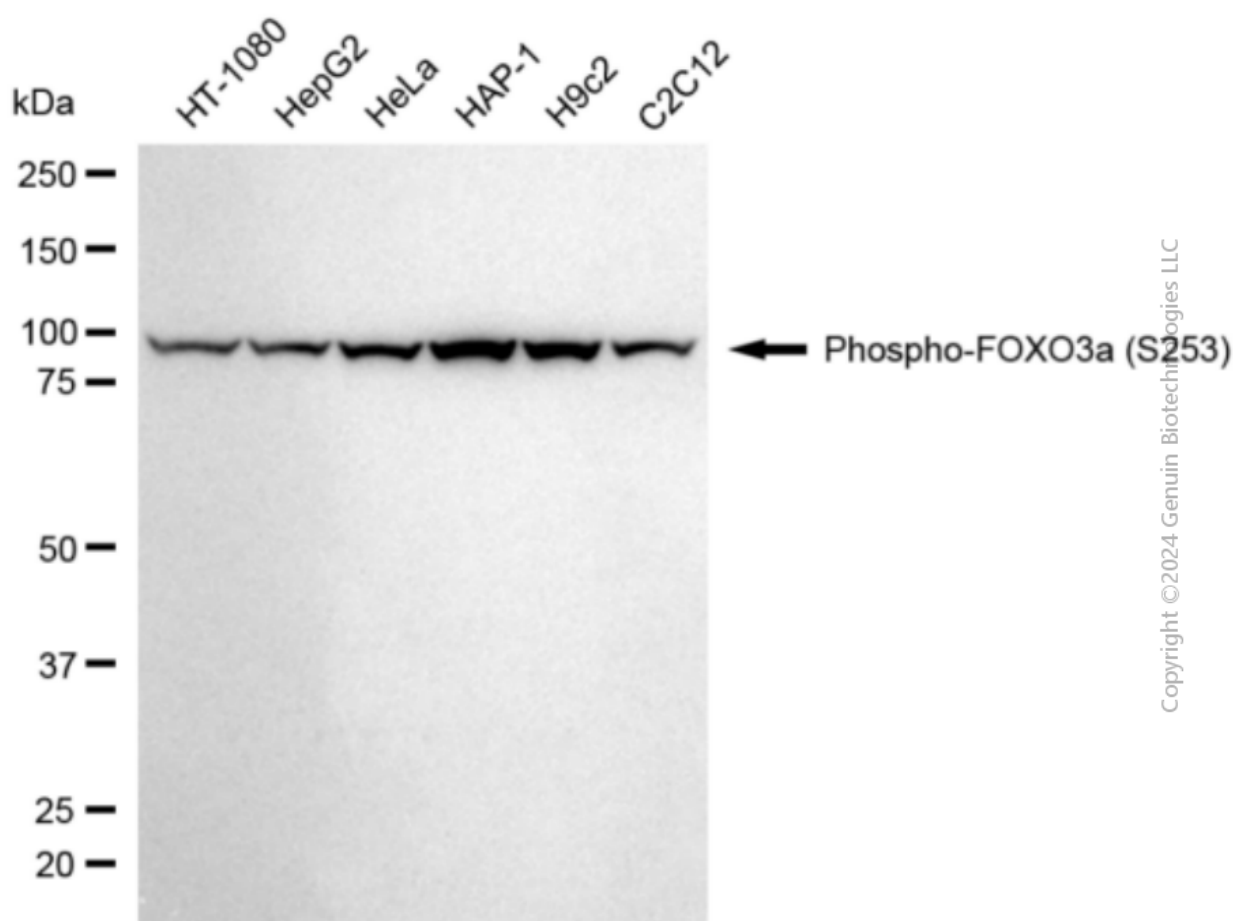
ORDERS

SALES@GENUINBIOTECH.COM
FAX: +1-540-855-7041

WWW.GENUINBIOTECH.COM



Immunocytochemical staining of HepG2 cells with anti-Phospho-FOXO3a (S253) antibody (Cat#3087, 1:1,000) . Nuclei were stained blue with DAPI; Phospho-FOXO3a (S253) was stained magenta with Alexa Fluor® 647. Images were taken using Leica stellaris 5. Protein abundance based on laser Intensity and smart gain: Medium. Scale bar: 20 μ m.



Western blotting analysis using anti-phospho-FOXO3a (S253) antibody (Cat#3087). Total cell lysates (30 μ g) from various cell lines were loaded and separated by SDS-PAGE. The blot was incubated with anti-phospho-FOXO3a (S253) antibody (Cat#3087, 1:5,000) and HRP-conjugated

Anti-Phospho-FOXO3a (S253) Recombinant Rabbit Monoclonal Antibody

PAGE 4

goat anti-rabbit secondary antibody (Cat#201, 1:20,000) respectively. Image was developed using FeQ™ ECL Substrate Kit (Cat#226).

SUPPORT

SUPPORT@GENUINBIOTECH.COM
TEL: +1-540-855-7041

ORDERS

SALES@GENUINBIOTECH.COM
FAX: +1-540-855-7041

WWW.GENUINBIOTECH.COM