

# Anti-SGK1 Recombinant Rabbit Monoclonal Antibody



**Catalog #: 3088**

## Aliases

SGK1; Serum/Glucocorticoid Regulated Kinase 1; SGK; Serine/Threonine-Protein Kinase Sgk1; EC 2.7.11.1; Serum/Glucocorticoid-Regulated Kinase 1; Serum/Glucocorticoid Regulated Kinase; Serine/Threonine Protein Kinase SGK; EC 2.7.11

## Background

Gene Name: SGK1

NCBI Gene Entry: [6446](#)

UniProt Entry: [O00141](#)

## Application Information

Molecular Weight: Predicted, 49 kDa; observed, 49 kDa

Clonality: Rabbit monoclonal antibody

Clone ID: 24GB4005

Species Reactivity: Human, mouse, rat

Applications Tested: Western blotting (WB), flow cytometry (FCM), immunocytochemistry (IC)

## Immunogen

A synthesized peptide derived from human SGK1

## Isotype

Rabbit IgG

## Storage Buffer

Supplied in PBS (pH 7.4) containing 50% glycerol, and 0.02% sodium azide.

## Storage

Store at -20 °C for one year.

## Recommended Dilutions

Western Blotting (WB): 1:1,000-1:5,000

Flow Cytometry (FCM): 1:2,000

Immunocytochemistry (IC): 1:100-1:1,000

**Note:** This product is for research use only.

---

### SUPPORT

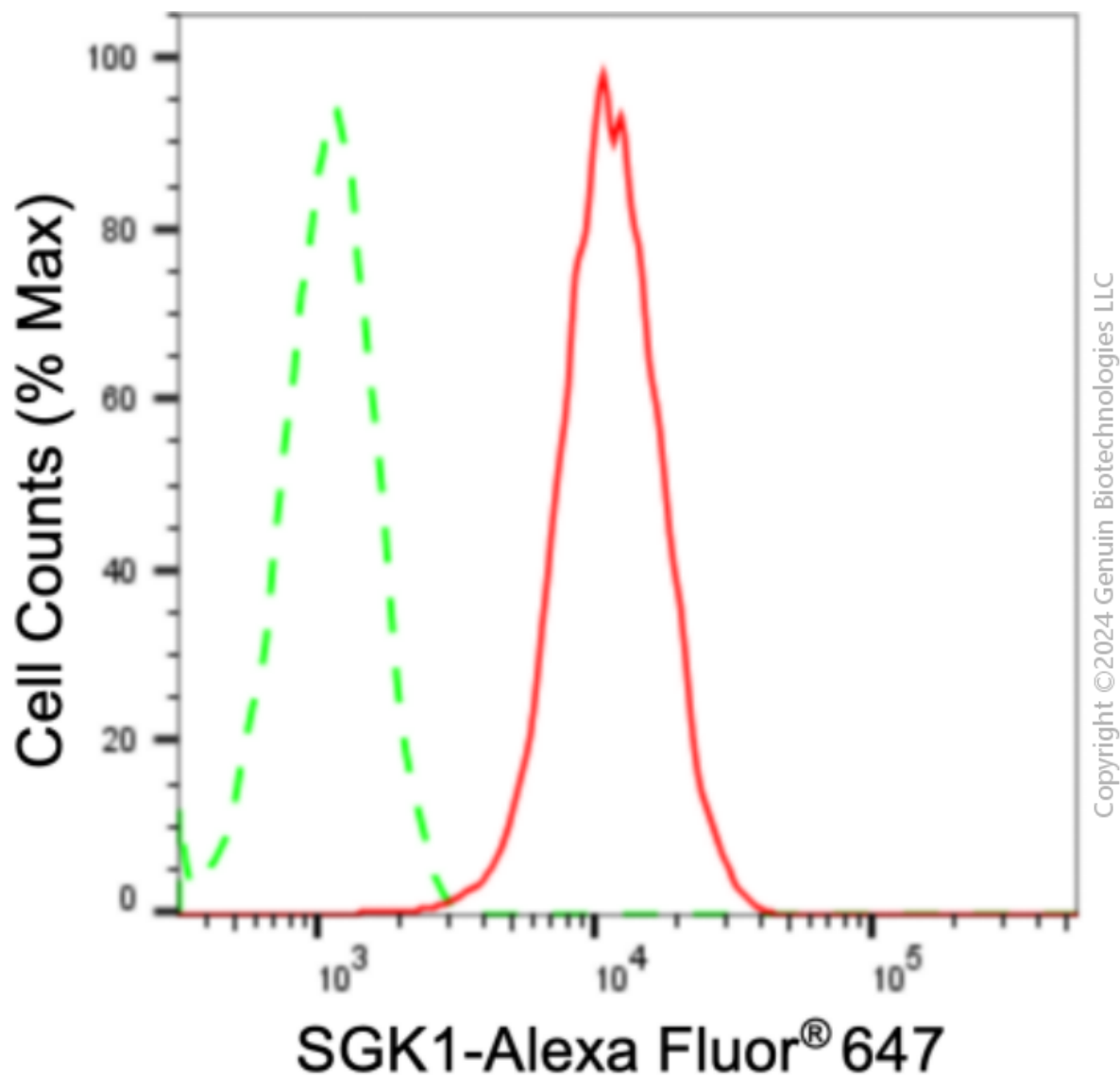
SUPPORT@GENUINBIOTECH.COM  
TEL: +1-540-855-7041

### ORDERS

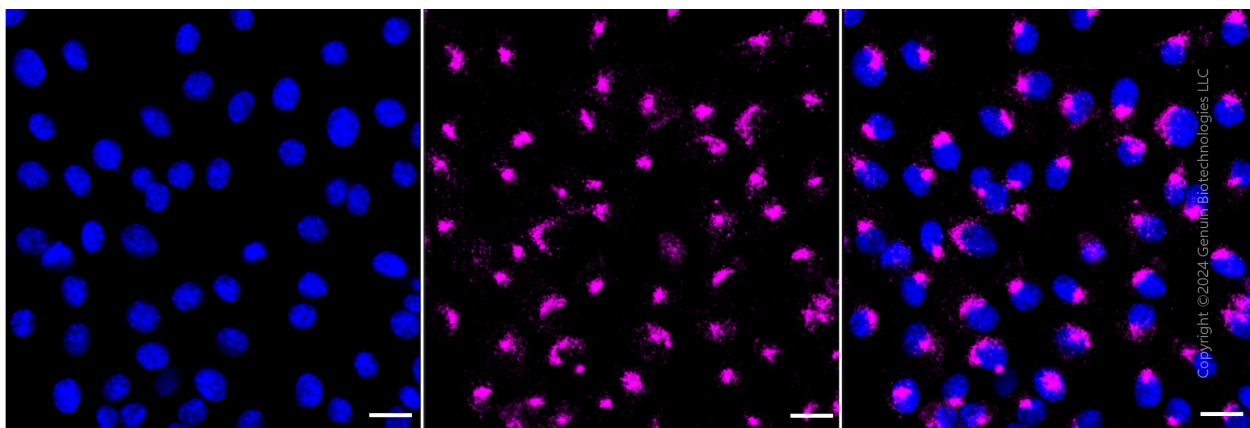
SALES@GENUINBIOTECH.COM  
FAX: +1-540-855-7041

[WWW.GENUINBIOTECH.COM](http://WWW.GENUINBIOTECH.COM)

**Validation Data**



Flow cytometric analysis of SGK1 expression in C2C12 cells using anti-SGK1 antibody (Cat#3088, 1:2,000). Green, isotype control; red, SGK1.



**SUPPORT**

SUPPORT@GENUINBIOTECH.COM  
TEL: +1-540-855-7041

**ORDERS**

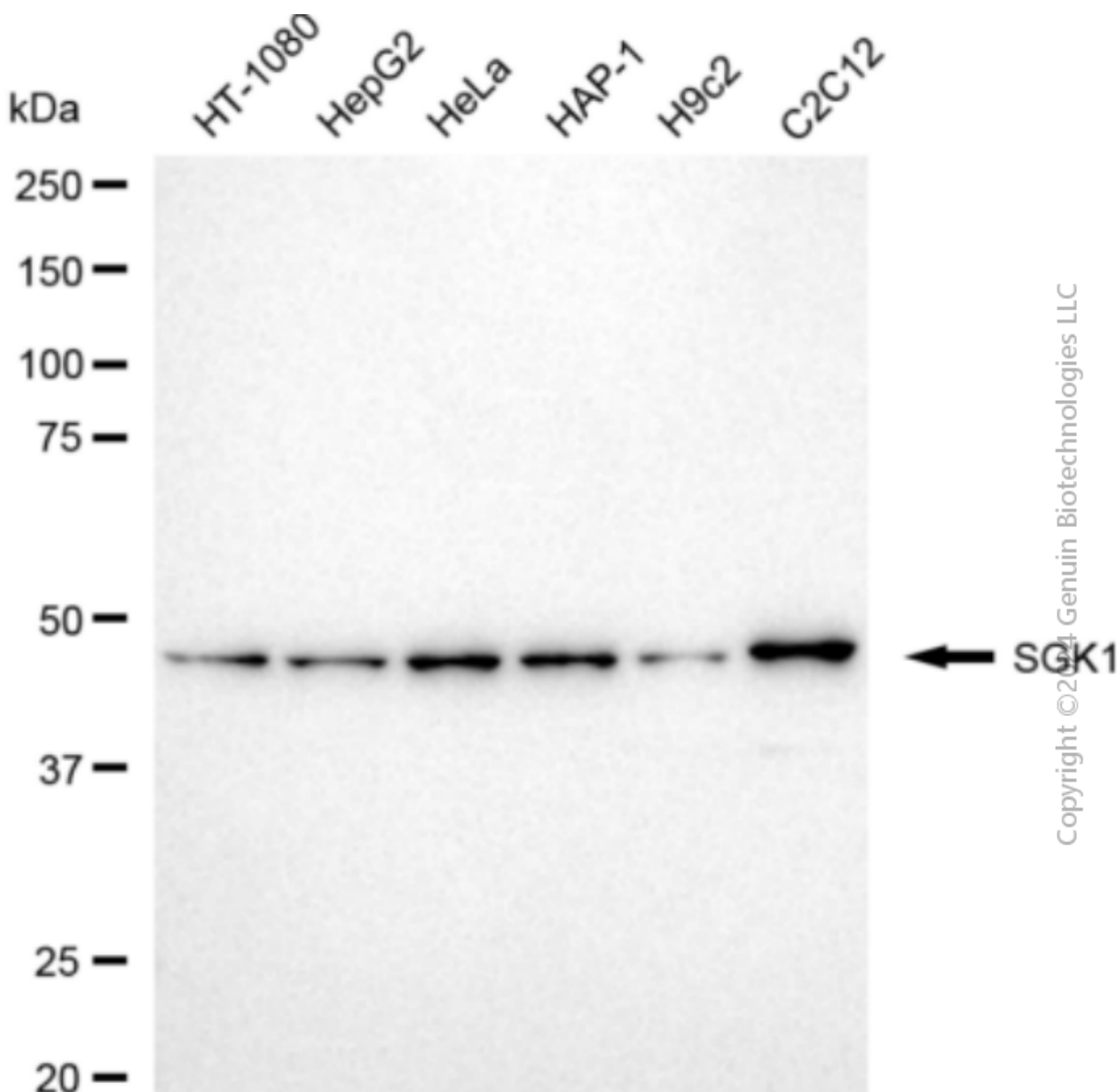
SALES@GENUINBIOTECH.COM  
FAX: +1-540-855-7041

[WWW.GENUINBIOTECH.COM](http://WWW.GENUINBIOTECH.COM)

## Anti-SGK1 Recombinant Rabbit Monoclonal Antibody

PAGE 3

Immunocytochemical staining of C2C12 cells with SGK1 antibody (Cat#3088, 1:1,000). Nuclei were stained blue with DAPI; SGK1 was stained magenta with Alexa Fluor® 647. Images were taken using Leica stellaris 5. Protein abundance based on laser Intensity and smart gain: High. Scale bar: 20  $\mu$ m.



Western blotting analysis using anti-SGK1 antibody (Cat#3088). Total cell lysates (30  $\mu$ g) from various cell lines were loaded and separated by SDS-PAGE. The blot was incubated with anti-SGK1 antibody (Cat#3088, 1:5,000) and HRP-conjugated goat anti-rabbit secondary antibody (Cat#201, 1:20,000) respectively. Image was developed using FeQ™ ECL Substrate Kit (Cat#226).

### SUPPORT

SUPPORT@GENUINBIOTECH.COM  
TEL: +1-540-855-7041

### ORDERS

SALES@GENUINBIOTECH.COM  
FAX: +1-540-855-7041

WWW.GENUINBIOTECH.COM