

Anti-Transcription Factor 7 Like 2 Recombinant Rabbit Monoclonal Antibody



Catalog #: 3092

Aliases

TCF7L2; Transcription Factor 7 Like 2; TCF-4; TCF4; Transcription Factor 7-Like 2 (T-Cell Specific, HMG-Box); T-Cell-Specific Transcription Factor 4; HMG Box Transcription Factor 4; Transcription Factor 7-Like 2; T-Cell Factor 4; HTCF-4

Background

Gene Name: TCF7L2

NCBI Gene Entry: [6934](#)

UniProt Entry: [Q9NQB0](#)

Application Information

Molecular Weight: Predicted, 68 kDa; observed, 68 kDa

Clonality: Rabbit monoclonal antibody

Clone ID: 24GB4025

Species Reactivity: Human, mouse, rat

Applications Tested: Western blotting (WB), flow cytometry (FCM), immunocytochemistry (IC)

Immunogen

A synthesized peptide derived from human TCF7L2

Isotype

Rabbit IgG

Storage Buffer

Supplied in PBS (pH 7.4) containing 50% glycerol, and 0.02% sodium azide.

Storage

Store at -20 °C for one year.

Recommended Dilutions

Western Blotting (WB): 1:4,000-1:20,000

Flow Cytometry (FCM): 1:2,000

Immunocytochemistry (IC): 1:100-1:1,000

Note: This product is for research use only.

SUPPORT

SUPPORT@GENUINBIOTECH.COM
TEL: +1-540-855-7041

ORDERS

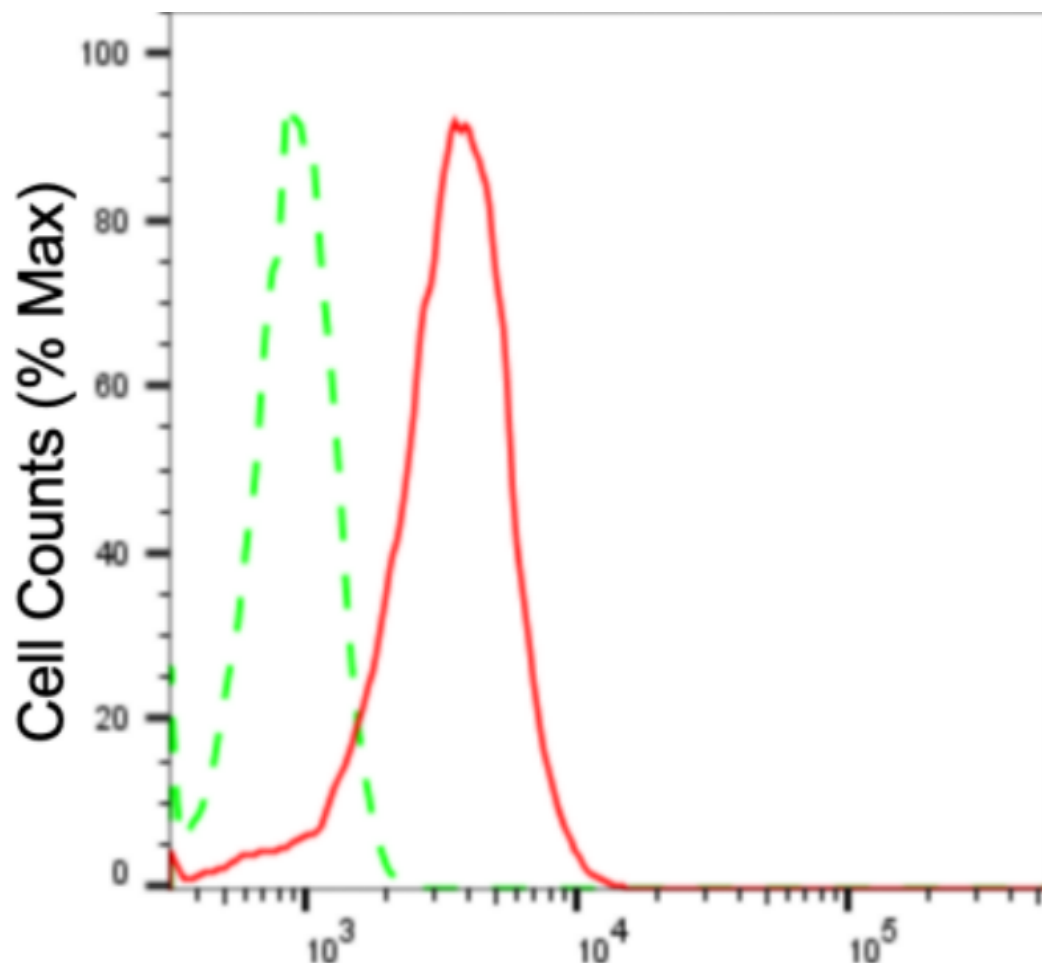
SALES@GENUINBIOTECH.COM
FAX: +1-540-855-7041

WWW.GENUINBIOTECH.COM

Anti-Transcription Factor 7 Like 2 Recombinant Rabbit Monoclonal Antibody

PAGE 2

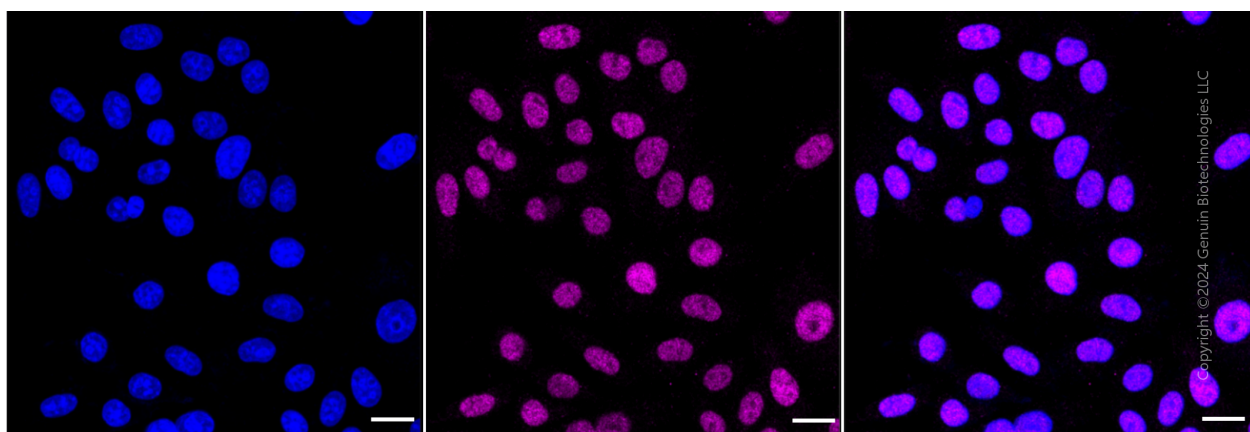
Validation Data



Copyright ©2024 Genuin Biotechnologies LLC

Transcription factor 7 like 2-Alexa Fluor® 647

Flow cytometric analysis of transcription factor 7 like 2 expression in HepG2 cells using anti-transcription factor 7 like 2 antibody (Cat#3092, 1:2,000). Green, isotype control; red, transcription factor 7 like 2.



SUPPORT

SUPPORT@GENUINBIOTECH.COM
TEL: +1-540-855-7041

ORDERS

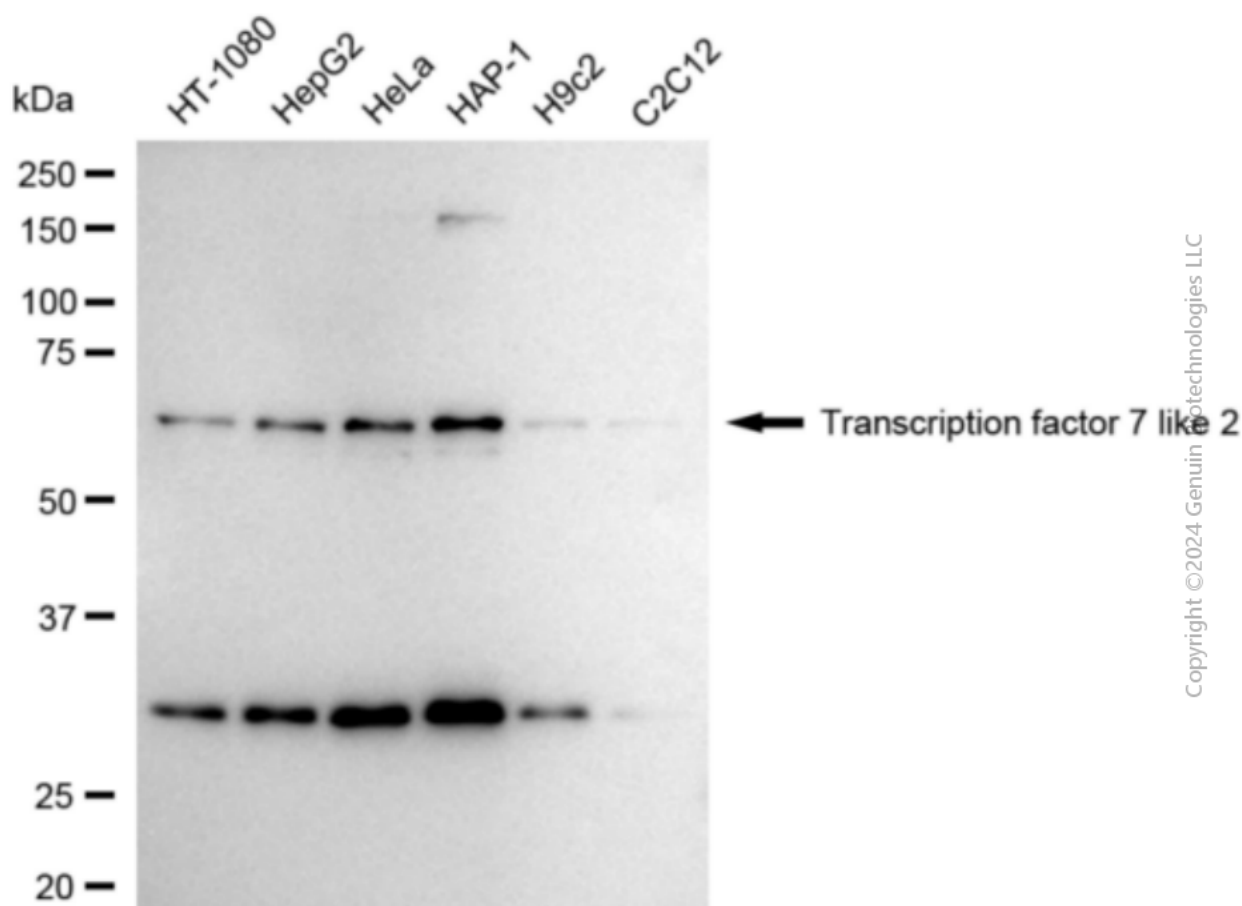
SALES@GENUINBIOTECH.COM
FAX: +1-540-855-7041

WWW.GENUINBIOTECH.COM

Anti-Transcription Factor 7 Like 2 Recombinant Rabbit Monoclonal Antibody

PAGE 3

Immunocytochemical staining of HepG2 cells with anti-Transcription factor 7 like 2 antibody (Cat#3092, 1:1,000). Nuclei were stained blue with DAPI; Transcription factor 7 like 2 was stained magenta with Alexa Fluor® 647. Images were taken using Leica stellaris 5. Protein abundance based on laser Intensity and smart gain: Medium. Scale bar: 20 μ m.



Western blotting analysis using anti-transcription factor 7 like 2 antibody (Cat#3092). Total cell lysates (30 μ g) from various cell lines were loaded and separated by SDS-PAGE. The blot was incubated with anti-transcription factor 7 like 2 antibody (Cat#3092, 1:20,000) and HRP-conjugated goat anti-rabbit secondary antibody (Cat#201, 1:20,000) respectively. Image was developed using FeQ™ ECL Substrate Kit (Cat#226).

SUPPORT

SUPPORT@GENUINBIOTECH.COM
TEL: +1-540-855-7041

ORDERS

SALES@GENUINBIOTECH.COM
FAX: +1-540-855-7041

WWW.GENUINBIOTECH.COM