

# Anti-Ubiquitin Specific Peptidase 10 Recombinant Rabbit Monoclonal Antibody



**Catalog #: 3101**

## Aliases

USP10; Ubiquitin Specific Peptidase 10; KIAA0190; UBPO; Ubiquitin-Specific-Processing Protease 10; Ubiquitin Carboxyl-Terminal Hydrolase 10; Ubiquitin Specific Protease 10; Deubiquitinating Enzyme 10; Ubiquitin Thioesterase 10; Ubiquitin Thiolesterase 10; EC 3.4.19.12

## Background

Gene Name: USP10

NCBI Gene Entry: [9100](#)

UniProt Entry: [Q14694](#)

## Application Information

Molecular Weight: Predicted, 87 kDa; observed, 110 kDa

Clonality: Rabbit monoclonal antibody

Clone ID: 24GB4070

Species Reactivity: Human

Applications Tested: Western blotting (WB), flow cytometry (FCM), immunocytochemistry (IC)

## Immunogen

A synthesized peptide derived from human USP10

## Isotype

Rabbit IgG

## Storage Buffer

Supplied in PBS (pH 7.4) containing 50% glycerol, and 0.02% sodium azide.

## Storage

Store at -20 °C for one year.

## Recommended Dilutions

Western Blotting (WB): 1:1,000-1:5,000

Flow Cytometry (FCM): 1:2,000

Immunocytochemistry (IC): 1:100-1:1,000

---

### SUPPORT

SUPPORT@GENUINBIOTECH.COM  
TEL: +1-540-855-7041

### ORDERS

SALES@GENUINBIOTECH.COM  
FAX: +1-540-855-7041

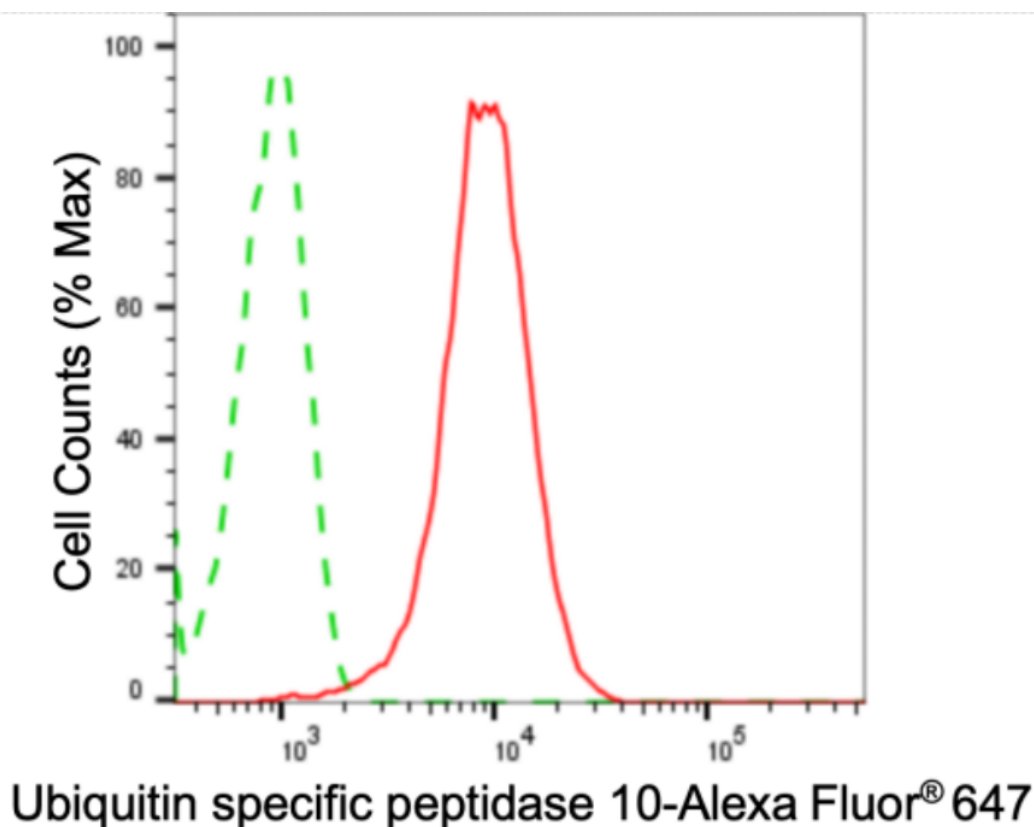
[WWW.GENUINBIOTECH.COM](http://WWW.GENUINBIOTECH.COM)

# Anti-Ubiquitin Specific Peptidase 10 Recombinant Rabbit Monoclonal Antibody

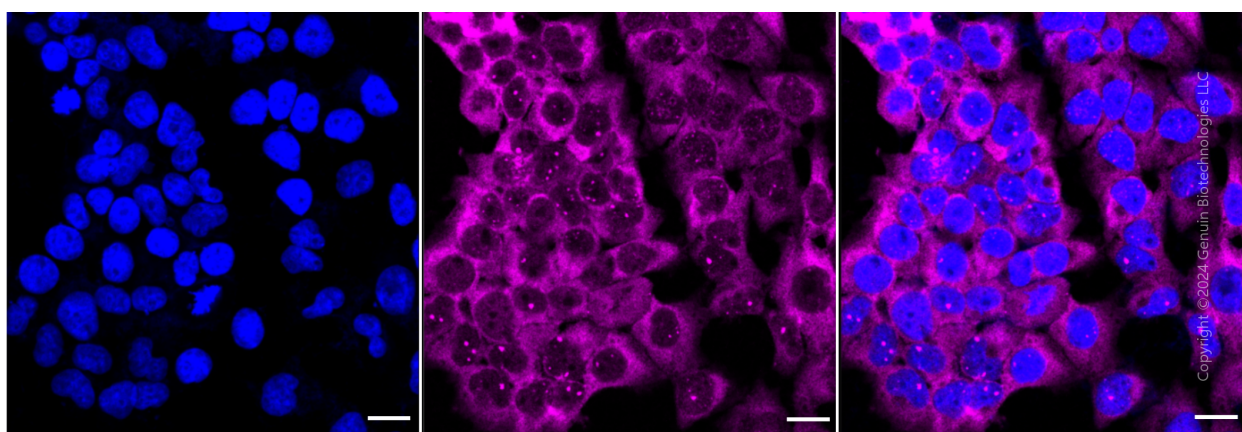
PAGE 2

**Note:** This product is for research use only.

## Validation Data



Flow cytometric analysis of ubiquitin specific peptidase 10 expression in HeLa cells using anti-ubiquitin specific peptidase 10 antibody (Cat#3101, 1:2,000). Green, isotype control; red, ubiquitin specific peptidase 10.



Immunocytochemical staining of HeLa cells with ubiquitin specific peptidase 10 antibody (Cat#3101, 1:1,000). Nuclei were stained blue with DAPI; Ubiquitin specific peptidase 10 was stained magenta with Alexa Fluor® 647. Images were taken using Leica stellaris 5. Protein abundance based on laser Intensity and smart gain: High. Scale bar: 20  $\mu$ m.

### SUPPORT

SUPPORT@GENUINBIOTECH.COM  
TEL: +1-540-855-7041

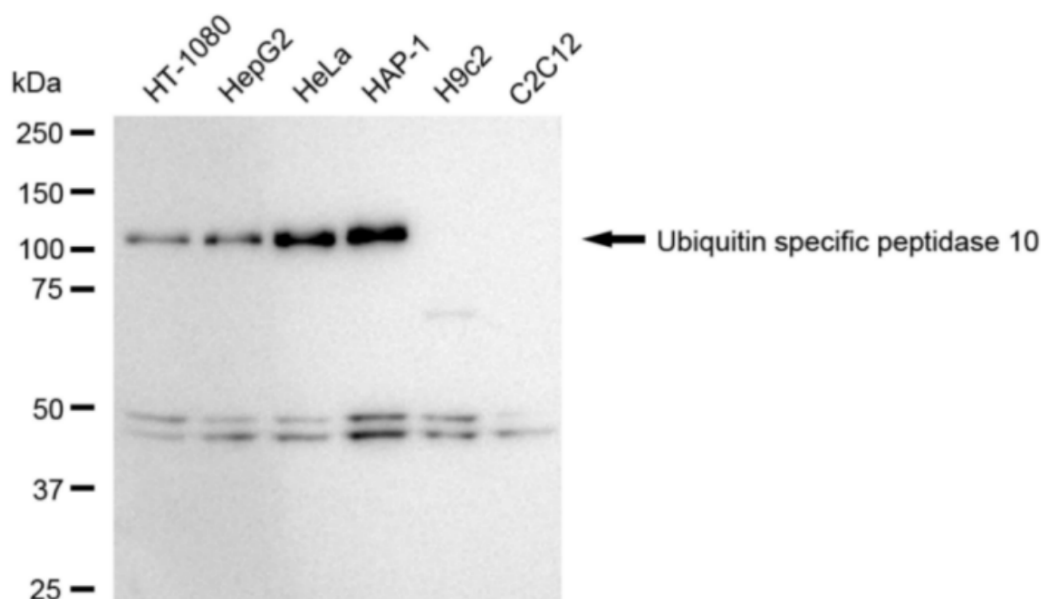
### ORDERS

SALES@GENUINBIOTECH.COM  
FAX: +1-540-855-7041

[WWW.GENUINBIOTECH.COM](http://WWW.GENUINBIOTECH.COM)

## Anti-Ubiquitin Specific Peptidase 10 Recombinant Rabbit Monoclonal Antibody

PAGE 3



Copyright ©2024 Genuin Biotechnologies LLC

Western blotting analysis using anti-ubiquitin specific peptidase 10 antibody (Cat#3101). Total cell lysates (30 µg) from various cell lines were loaded and separated by SDS-PAGE. The blot was incubated with anti-ubiquitin specific peptidase 10 antibody (Cat#3101, 1:5,000) and HRP-conjugated goat anti-rabbit secondary antibody (Cat#201, 1:20,000) respectively. Image was developed using FeQ™ ECL Substrate Kit (Cat#226).

### SUPPORT

SUPPORT@GENUINBIOTECH.COM  
TEL: +1-540-855-7041

### ORDERS

SALES@GENUINBIOTECH.COM  
FAX: +1-540-855-7041

[WWW.GENUINBIOTECH.COM](http://WWW.GENUINBIOTECH.COM)