

Anti-Phosphodiesterase 4D Recombinant Rabbit Monoclonal Antibody



Catalog #: 3106

Aliases

PDE4D; Phosphodiesterase 4D; DPDE3; CAMP-Specific 3',5'-Cyclic Phosphodiesterase 4D; 3',5'-Cyclic-AMP Phosphodiesterase 4D; PDE43; Phosphodiesterase 4D, CAMP-Specific (Dunce (Drosophila)-Homolog Phosphodiesterase E3); Phosphodiesterase 4D, CAMP-Specific (Phosphodiesterase E3 Dunce Homolog, Drosophila); Phosphodiesterase E3 Dunce Homolog (Drosophila); CAMP-Specific Phosphodiesterase PDE4D6; Phosphodiesterase 4D, CAMP-Specific; CAMP-Specific Phosphodiesterase 4D; Testicular Tissue Protein Li 136; EC 3.1.4.53; EC 3.1.4.17; EC 3.1.4; ACRDYS2; HSPDE4D; PDE4DN2; STRK1

Background

Gene Name: PDE4D
NCBI Gene Entry: [5144](#)
UniProt Entry: [Q08499](#)

Application Information

Molecular Weight: Predicted, 91 kDa; observed, 91 kDa
Clonality: Rabbit monoclonal antibody
Clone ID: 24GB4095
Species Reactivity: Human
Applications Tested: Western blotting (WB), flow cytometry (FCM), immunocytochemistry (IC)

Immunogen

A synthesized peptide derived from human PDE4D

Isotype

Rabbit IgG

Storage Buffer

Supplied in PBS (pH 7.4) containing 50% glycerol, and 0.02% sodium azide.

Storage

Store at -20 °C for one year.

Recommended Dilutions

Western Blotting (WB): 1:1,000-1:5,000

SUPPORT

SUPPORT@GENUINBIOTECH.COM
TEL: +1-540-855-7041

ORDERS

SALES@GENUINBIOTECH.COM
FAX: +1-540-855-7041

WWW.GENUINBIOTECH.COM

Anti-Phosphodiesterase 4D Recombinant Rabbit Monoclonal Antibody

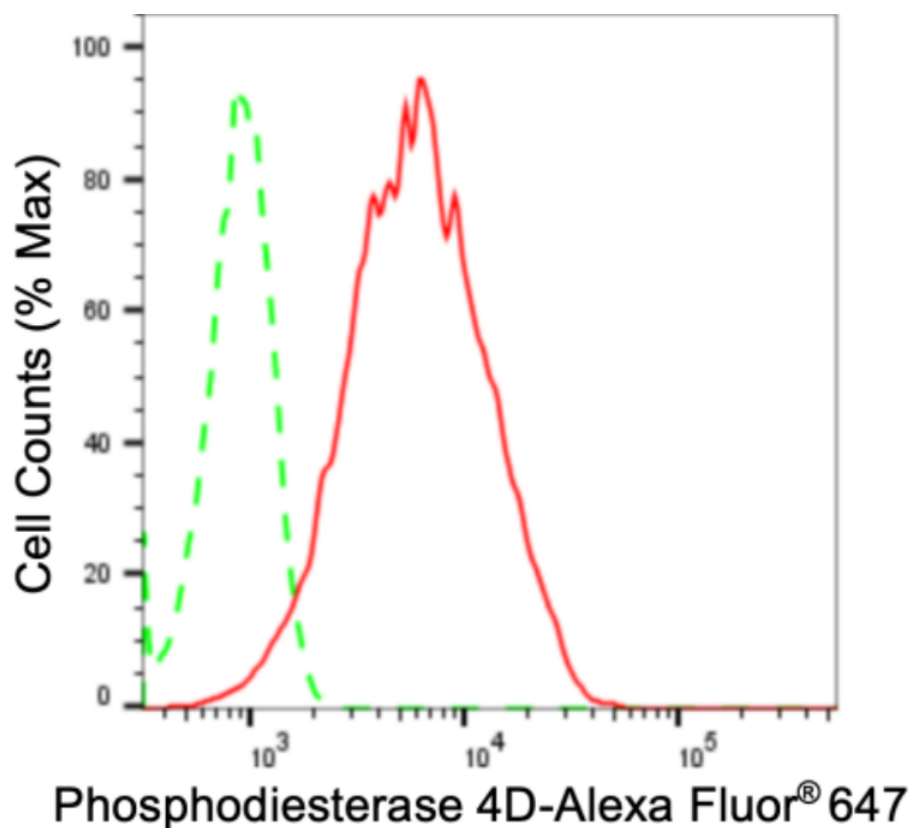
PAGE 2

Flow Cytometry (FCM): 1:2,000

Immunocytochemistry (IC): 1:100-1:1,000

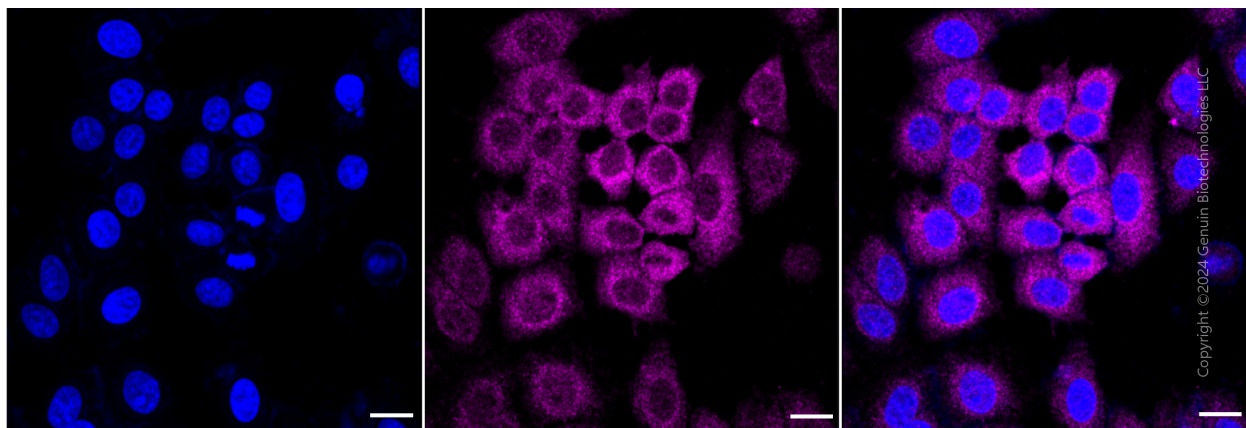
Note: This product is for research use only.

Validation Data



Copyright ©2024 Genuin Biotechnologies LLC

Flow cytometric analysis of phosphodiesterase 4D expression in HepG2 cells using anti-phosphodiesterase 4D antibody (Cat#3106, 1:2,000). Green, isotype control; red, phosphodiesterase 4D.



Copyright ©2024 Genuin Biotechnologies LLC

SUPPORT

SUPPORT@GENUINBIOTECH.COM
TEL: +1-540-855-7041

ORDERS

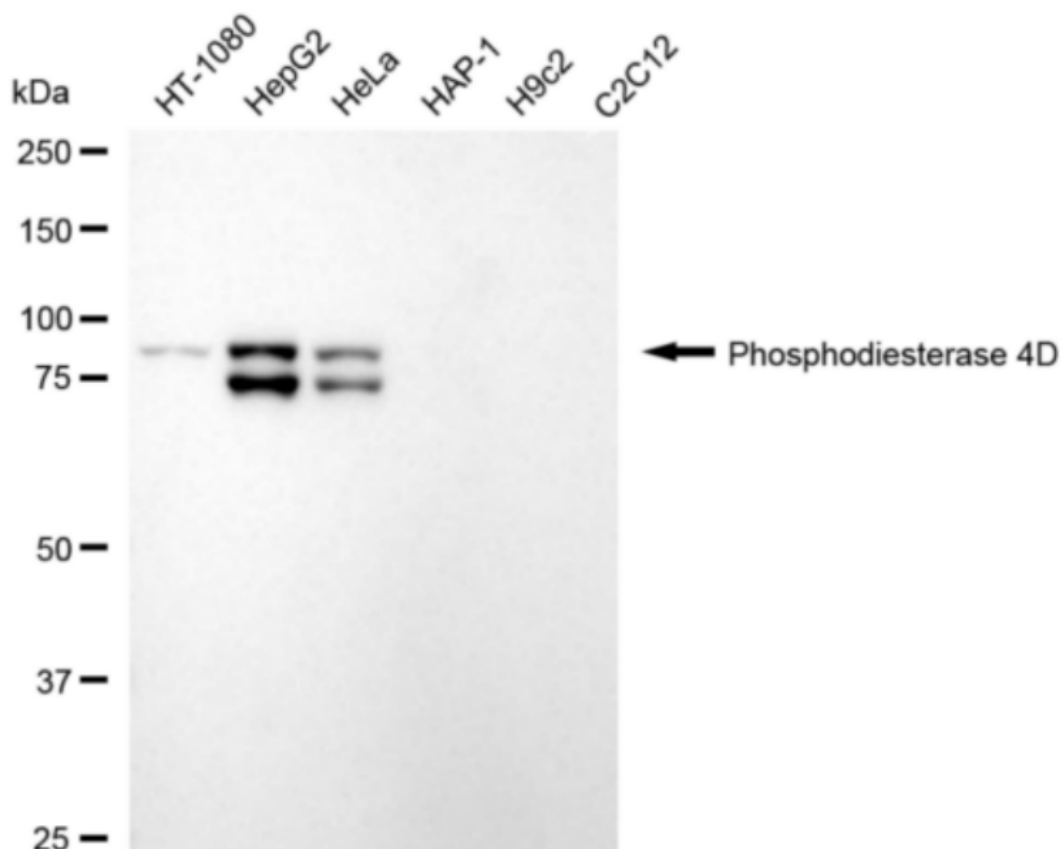
SALES@GENUINBIOTECH.COM
FAX: +1-540-855-7041

WWW.GENUINBIOTECH.COM

Anti-Phosphodiesterase 4D Recombinant Rabbit Monoclonal Antibody

PAGE 3

Immunocytochemical staining of HepG2 cells with anti-phosphodiesterase 4D antibody (Cat#3106, 1:1,000). Nuclei were stained blue with DAPI; Phosphodiesterase 4D was stained magenta with Alexa Fluor® 647. Images were taken using Leica stellaris 5. Protein abundance based on laser Intensity and smart gain: Medium. Scale bar: 20 μ m.



Copyright ©2024 Genuin Biotechnologies LLC

Western blotting analysis using anti-phosphodiesterase 4D antibody (Cat#3106). Total cell lysates (30 μ g) from various cell lines were loaded and separated by SDS-PAGE. The blot was incubated with anti-phosphodiesterase 4D antibody (Cat#3106, 1:5,000) and HRP-conjugated goat anti-rabbit secondary antibody (Cat#201, 1:20,000) respectively. Image was developed using FeQ™ ECL Substrate Kit (Cat#226).

SUPPORT

SUPPORT@GENUINBIOTECH.COM
TEL: +1-540-855-7041

ORDERS

SALES@GENUINBIOTECH.COM
FAX: +1-540-855-7041

WWW.GENUINBIOTECH.COM