

# Anti-Syntrophin Alpha 1 Recombinant Rabbit Monoclonal Antibody



**Catalog #: 3117**

## Aliases

SNTA1; Syntrophin Alpha 1; TACIP1; Pro-TGF-Alpha Cytoplasmic Domain-Interacting Protein 1; LQT12; SNT1; 59 KDa Dystrophin-Associated Protein A1 Acidic Component 1; Dystrophin-Associated Protein A1, 59kDa, Acidic Component; Alpha-1-Syntrophin; Syntrophin-1; Syntrophin, Alpha 1 (Dystrophin-Associated Protein A1, 59kD, Acidic Component); Acidic Alpha 1 Syntrophin; DJ1187J4.5

## Background

Gene Name: SNTA1

NCBI Gene Entry: [6640](#)

UniProt Entry: [Q13424](#)

## Application Information

Molecular Weight: Predicted, 54 kDa; observed, 54 kDa

Clonality: Rabbit monoclonal antibody

Clone ID: 24GB4150

Species Reactivity: Human, mouse, rat

Applications Tested: Western blotting (WB), flow cytometry (FCM), immunocytochemistry (IC)

## Immunogen

A synthesized peptide derived from human Syntrophin alpha 1

## Isotype

Rabbit IgG

## Storage Buffer

Supplied in PBS (pH 7.4) containing 50% glycerol, and 0.02% sodium azide.

## Storage

Store at -20 °C for one year.

## Recommended Dilutions

Western Blotting (WB): 1:1,000-1:5,000

Flow Cytometry (FCM): 1:2,000

Immunocytochemistry (IC): 1:100-1:1,000

---

### SUPPORT

SUPPORT@GENUINBIOTECH.COM  
TEL: +1-540-855-7041

### ORDERS

SALES@GENUINBIOTECH.COM  
FAX: +1-540-855-7041

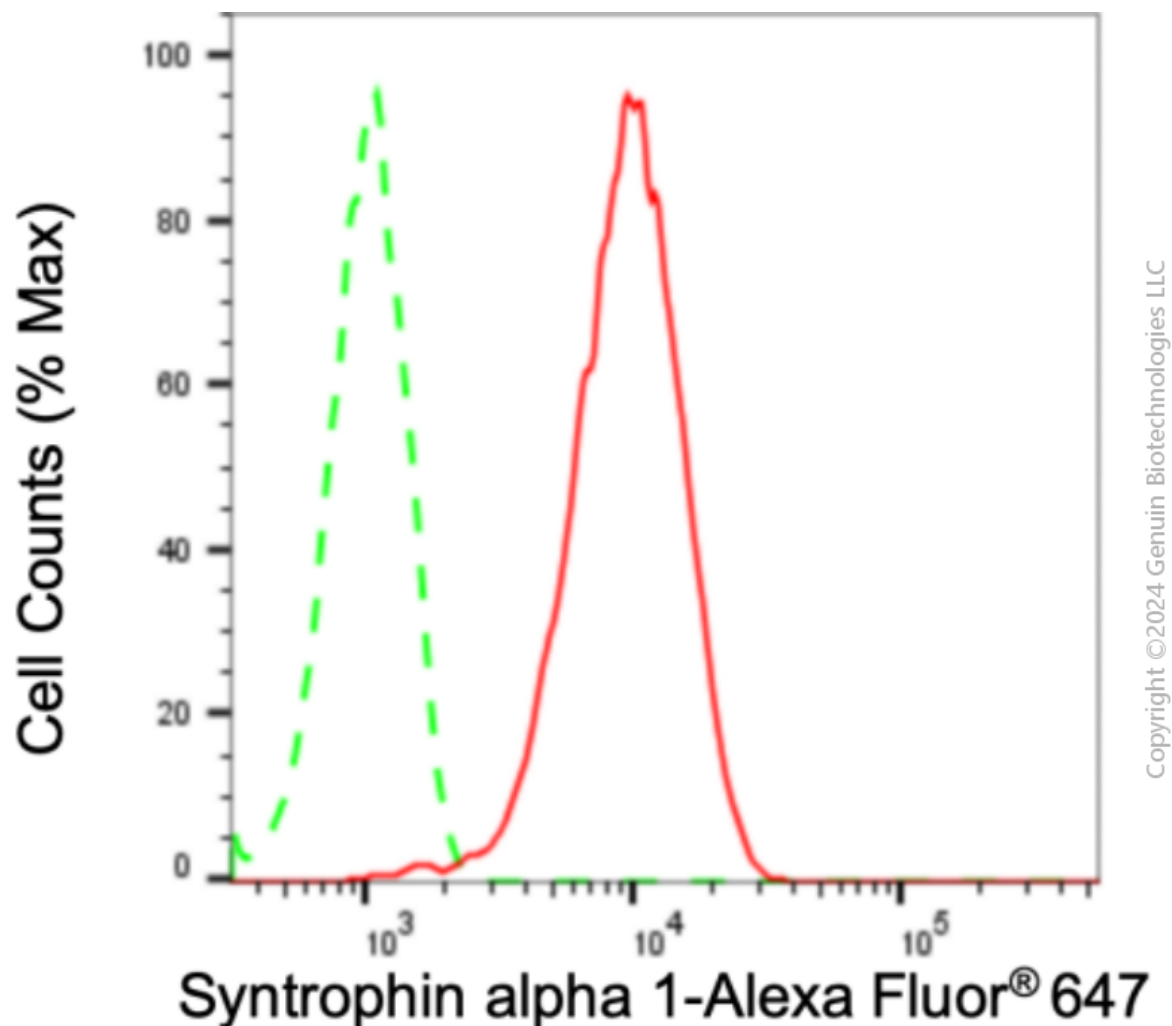
[WWW.GENUINBIOTECH.COM](http://WWW.GENUINBIOTECH.COM)

# Anti-Syntrophin Alpha 1 Recombinant Rabbit Monoclonal Antibody

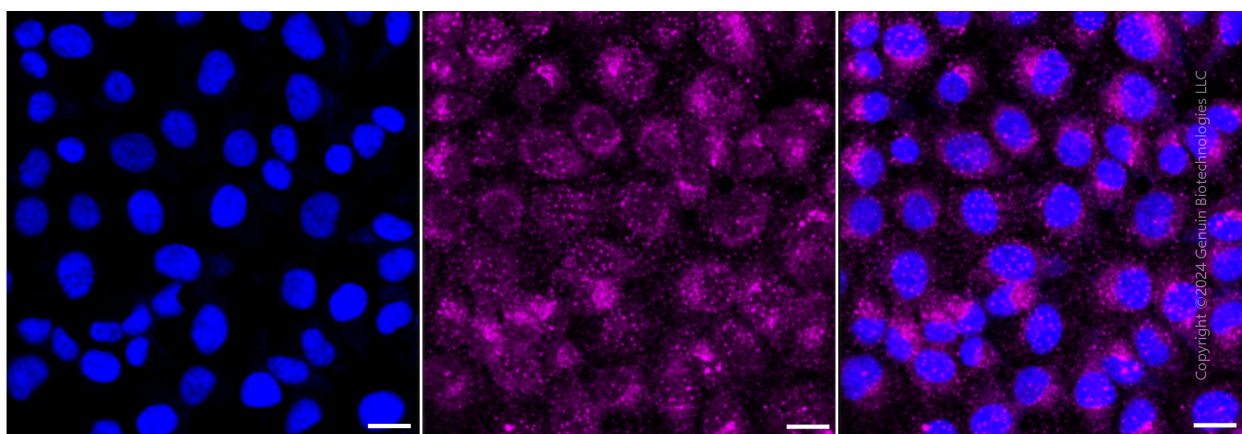
PAGE 2

**Note:** This product is for research use only.

## Validation Data



Flow cytometric analysis of syntrophin alpha 1 expression in HT-1080 cells using anti-syntrophin alpha 1 antibody (Cat#3117, 1:2,000). Green, isotype control; red, syntrophin alpha 1.



### SUPPORT

SUPPORT@GENUINBIOTECH.COM  
TEL: +1-540-855-7041

### ORDERS

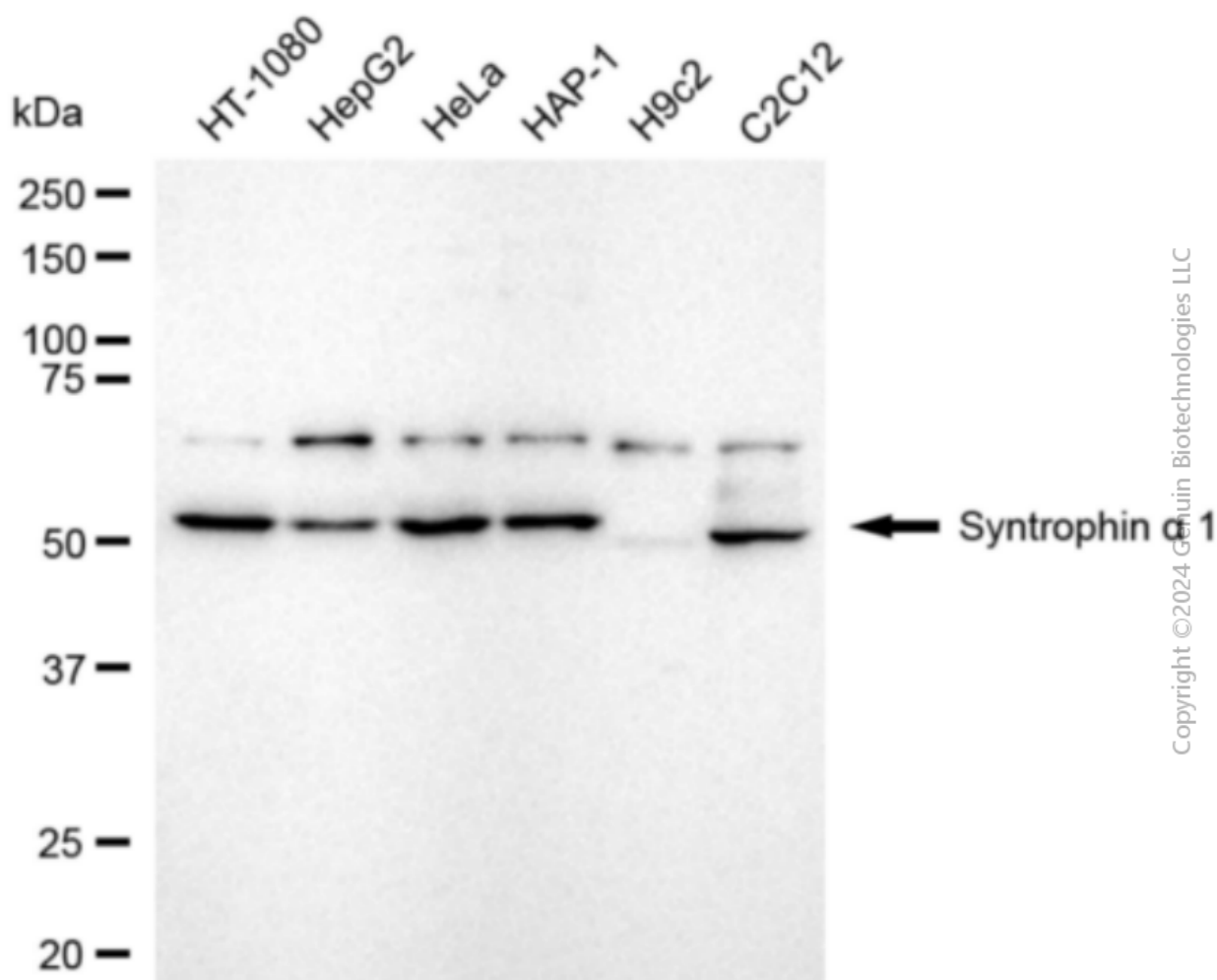
SALES@GENUINBIOTECH.COM  
FAX: +1-540-855-7041

WWW.GENUINBIOTECH.COM

## Anti-Syntrophin Alpha 1 Recombinant Rabbit Monoclonal Antibody

PAGE 3

Immunocytochemical staining of HT-1080 cells with anti-Syntrophin alpha 1 antibody (Cat#3117, 1:1,000) . Nuclei were stained blue with DAPI; Syntrophin alpha 1 was stained magenta with Alexa Fluor® 647. Images were taken using Leica stellaris 5. Protein abundance based on laser Intensity and smart gain: Medium. Scale bar: 20  $\mu$ m.



Western blotting analysis using anti-syntrophin alpha 1 antibody (Cat#3117). Total cell lysates (30  $\mu$ g) from various cell lines were loaded and separated by SDS-PAGE. The blot was incubated with anti-syntrophin alpha 1 antibody (Cat#3117, 1:5,000) and HRP-conjugated goat anti-rabbit secondary antibody (Cat#201, 1:20,000) respectively. Image was developed using FeQ™ ECL Substrate Kit (Cat#226).

### SUPPORT

SUPPORT@GENUINBIOTECH.COM  
TEL: +1-540-855-7041

### ORDERS

SALES@GENUINBIOTECH.COM  
FAX: +1-540-855-7041

WWW.GENUINBIOTECH.COM