

Anti-POLD1 Recombinant Rabbit Monoclonal Antibody



Catalog #: 3118

Aliases

POLD1; DNA Polymerase Delta 1, Catalytic Subunit; CDC2; POLD; Polymerase (DNA) Delta 1, Catalytic Subunit; DNA Polymerase Delta Catalytic Subunit; DNA Polymerase Subunit Delta P125; 3'-5' Exodeoxyribonuclease; EC 2.7.7.7; Polymerase (DNA Directed), Delta 1, Catalytic Subunit (125kD); Polymerase (DNA Directed), Delta 1, Catalytic Subunit 125kDa; CDC2 Homolog (S. Cerevisiae); CDC2 Homolog; EC 3.1.11.-; CRCS10; MDPL

Background

Gene Name: POLD1

NCBI Gene Entry: [5424](#)

UniProt Entry: [P28340](#)

Application Information

Molecular Weight: Predicted, 124 kDa; observed, 124 kDa

Clonality: Rabbit monoclonal antibody

Clone ID: 24GB4155

Species Reactivity: Human, mouse, rat

Applications Tested: Western blotting (WB), flow cytometry (FCM), immunocytochemistry (IC)

Immunogen

A synthesized peptide derived from human POLD1

Isotype

Rabbit IgG

Storage Buffer

Supplied in PBS (pH 7.4) containing 50% glycerol, and 0.02% sodium azide.

Storage

Store at -20 °C for one year.

Recommended Dilutions

Western Blotting (WB): 1:1,000-1:5,000

Flow Cytometry (FCM): 1:2,000

Immunocytochemistry (IC): 1:100-1:1,000

SUPPORT

SUPPORT@GENUINBIOTECH.COM
TEL: +1-540-855-7041

ORDERS

SALES@GENUINBIOTECH.COM
FAX: +1-540-855-7041

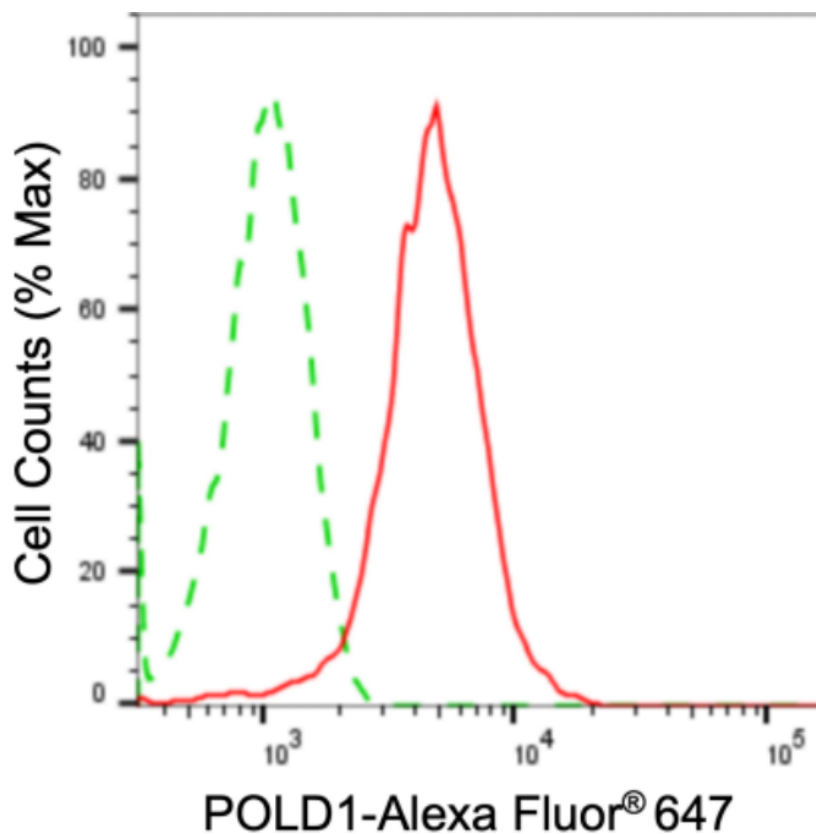
WWW.GENUINBIOTECH.COM

Anti-POLD1 Recombinant Rabbit Monoclonal Antibody

PAGE 2

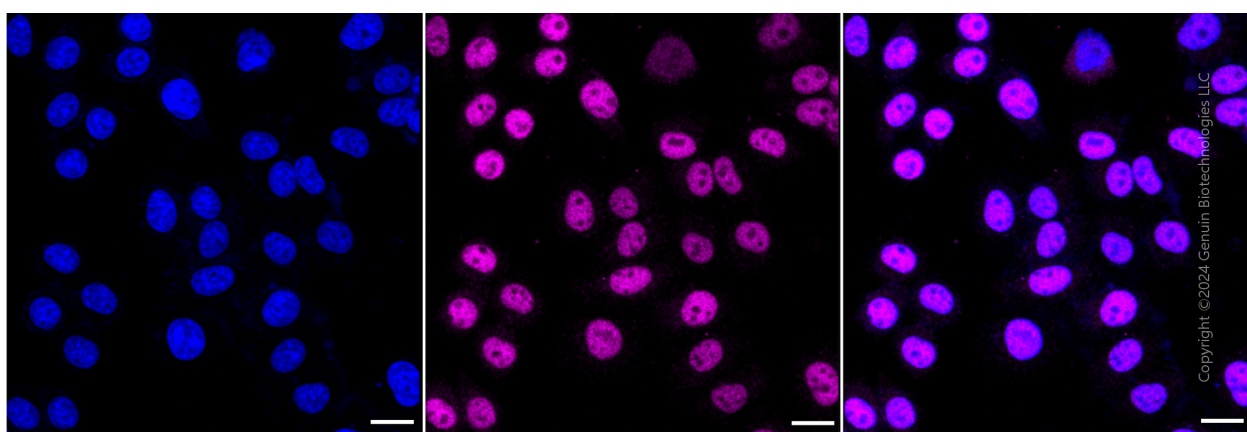
Note: This product is for research use only.

Validation Data



Copyright ©2024 Genuin Biotechnologies LLC

Flow cytometric analysis of POLD1 expression in HepG2 cells using anti-POLD1 antibody (Cat#3118, 1:2,000). Green, isotype control; red, POLD1.



Immunocytochemical staining of HepG2 cells with anti-POLD1 antibody (Cat#3118, 1:1,000). Nuclei were stained blue with DAPI; POLD1 was stained magenta with Alexa Fluor® 647. Images were taken using Leica stellaris 5. Protein abundance based on laser Intensity and smart gain: Medium. Scale bar: 20 μ m.

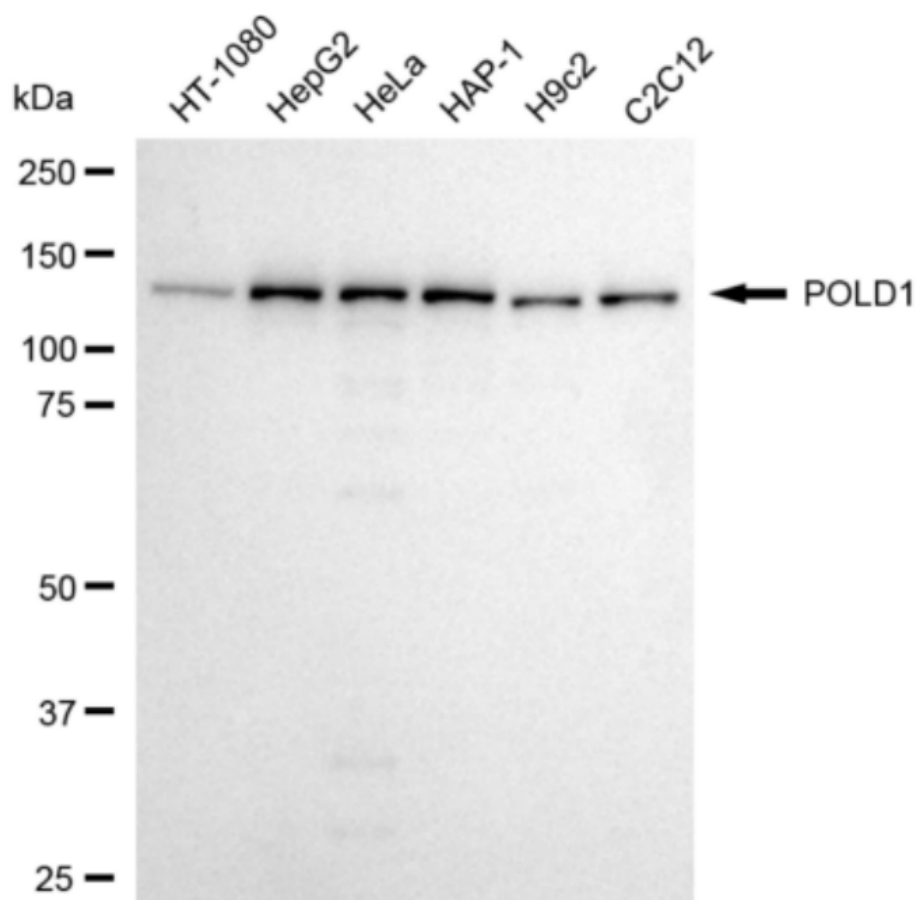
SUPPORT

SUPPORT@GENUINBIOTECH.COM
TEL: +1-540-855-7041

ORDERS

SALES@GENUINBIOTECH.COM
FAX: +1-540-855-7041

WWW.GENUINBIOTECH.COM



Copyright ©2024 Genuin Biotechnologies LLC

Western blotting analysis using anti-POLD1 antibody (Cat#3118). Total cell lysates (30 μ g) from various cell lines were loaded and separated by SDS-PAGE. The blot was incubated with anti-POLD1 antibody (Cat#3118, 1:5,000) and HRP-conjugated goat anti-rabbit secondary antibody (Cat#201, 1:20,000) respectively. Image was developed using FeQ™ ECL Substrate Kit (Cat#226).